

CERTIFIED LAND CORNER RESTORATION

Index No. Z-15

State of Wisconsin }
County of Lincoln } ss.

I Robert H. Winat, do hereby certify that on the 16th day of January, 1973 I found evidence of the North 1/4 corner of Section 3 Township 35, North, Range 4 East, Fourth, Principal Meridian, as described hereon; and that from this evidence I established a new monument and accessories as described hereon to perpetuate the ~~original~~ location of this corner.

Resident witnesses:

.....
.....
.....

History of original corner establishment:

Alex Andersen
July 1864
Wood stake set
10" Hemlock N79°E, 18 lk
14" Birch S30°W, 22 lk

Description of corner evidence found:

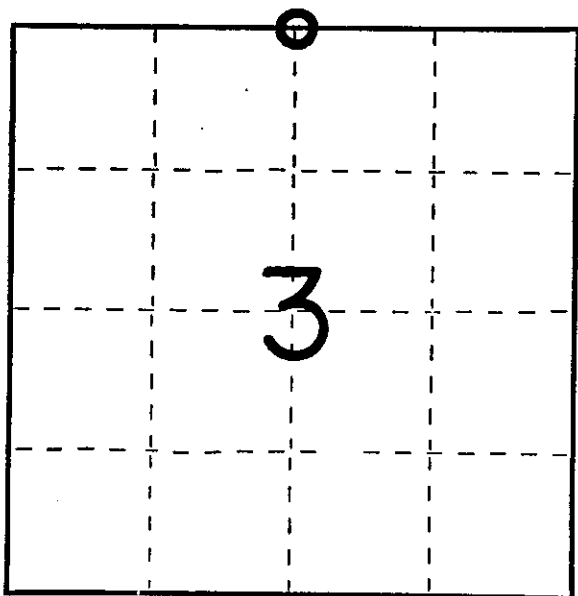
The intersection of U.S. Highway "8" and County Trunk Highway "T" was used to re-establish the corner as found by the Division of Highway's 1925 survey. This location checks well as D.S. Burnett's proportioned location of 1923. No other evidence of witnesses was found.

Description of monument and accessories I established to perpetuate the ~~original~~ location of this corner.

Ferntsen monument 36" - 3' N. of centerline of U.S.H."8" at intersection of C.T.H."T"

Ties

PK and disc in 6" Maple N3°E, 71.65'
PK and disc in 7" Maple N39°W, 60.15'
PK and disc in 6" White Pine N67°W, 97.41'
PK and disc in 6" S. Maple S13°W, 146.45'
Peg-4" sq. c. no. N10°W, 44.41'
benchmark monument



○ = Corner monument restored.

Dated at Minocqua, Wis., this 19th day of November, 1974

Signature Robert H. Winat Title Land Surveyor Registration No. S-1040
(County Surveyor, Registered Land Surveyor, or other duly authorized official)

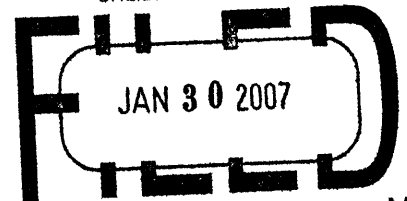
Office of Register of Deeds, County of....., I hereby certify that the within instrument was filed in this office for record on the.....day of....., 19..... at.....o'clock..... M.

.....
(Register of Deeds)

By.....Deputy

S4 34-36-4
From Lincoln Cty
Files

3604340020



At _____ O'Clock _____ M
THOMAS H. LEIGHTON
REGISTER OF DEEDS

Recorders Data

This form is intended to fulfill the requirements of Chapter A-E7.08 (3)(a) thru (i) U.S. Public Land Survey Monument Location Record, Wisconsin Administrative Code. Use the reverse side of form for continuation.

U.S. PUBLIC LAND SURVEY MONUMENT LOCATION RECORD

USPLS CORNER: SOUTH 1/4 SECTION: 34 TOWNSHIP: 36 NORTH RANGE: 4 EAST
 NAME OF WATERWAY FOR M.C. CORNER : N/A SECTION LINE: N/A
 (CITY)(VILLAGE)(TOWN) OF: LYNNE COUNTY OF: ONEIDA

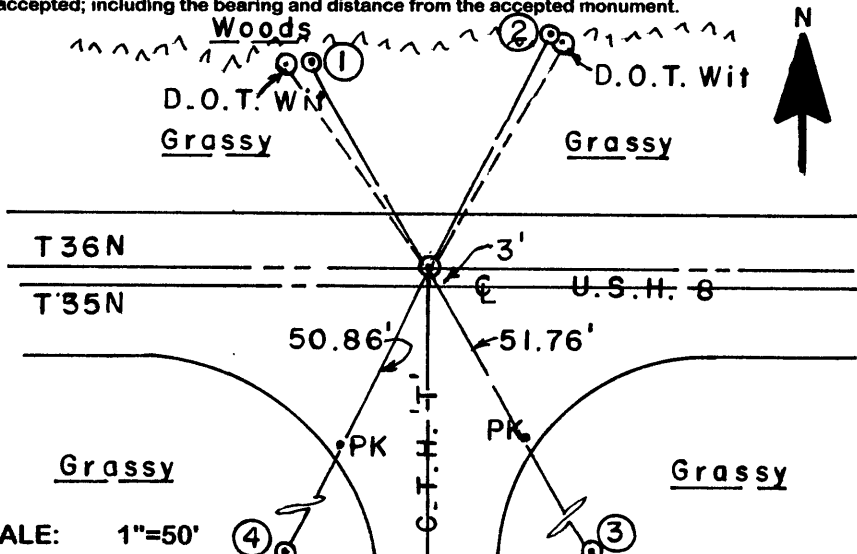
Description of monument found or placed and all other evidence used as the basis for monument location; including monuments and measurements required if the corner location was reestablished by lost corner proportionate methods. Also indicate name of the original surveyor, original survey date and the corner monument, bearing trees, witness or other reference monuments established, including measured bearing and distance ties, from available survey records.

In July 1864, Alexander Anderson/GLO set a wood post as the original 1/4 corner and noted OBTs: a 10" Hemlock N79°E 18 links and a 14" Bw S30°W 22 links; all are now obliterated.

Robert H. Winat/RLS 1040 reestablished this corner as located by a Wisconsin Division of Highways survey in 1925 and set a standard Berntsen cast aluminum monument 3' North of the centerline of USH 8 at intersection of CTH 'T' and noted he witnessed the corner to a PK spike & washer set in 4 new BTs and a peg in a 4" sq. concrete benchmark monument per his Certified Land Corner Restoration dated November 19, 1974. I found the PK/washers overgrown in all of the BT's so I used for subsequent position check only. In June 1983, Wisconsin D.O.T Survey Crew Chief John Wallin filed a standard Preservation of Landmark form with the Oneida County Surveyor as L-431, with corner location references to a standard Berntsen cast aluminum monument set flush in all quadrants at N30°39' E 68.28', S34°27'E 82.90', S30°39'W 86.74' and N34°27'W 64.41' on right lines thru corner in USH 8. I could not detect the Berntsen monument below pavement.

On September 6, 2006 I found that Winats 1974 concrete benchmark monument and the NW & NE 1983 Berntsen witness monuments to be within 0.05'+/- of record distances measured to a PK nail found in existing highway pavement, which I pulled as 3/16" dia. x 1/2" long and I drove a new 1/4" dia. by 2.5" long Mag nail into the cavity left by the old PK nail flush with pavement and painted with an orange cross for measuring new witness ties shown below. I could not find the SE Berntsen witness monument and the SW Berntsen witness monument was found destroyed. There were no direct witnesses. This corner rereferenced with approval of Oneida County Surveyor Michael Romportl.

Plan view map of monument location with bearing and distance ties to a minimum of four(4) described witness or reference monuments of concrete, natural stone, iron, live bearing trees or equivalent material. If applicable, also show a minimum of two(2) bearing and distance ties to any other monument found and not accepted; including the bearing and distance from the accepted monument.



WITNESS MONUMENT TIES:

- ① Set a 5/8" dia. by 24" long rebar with yellow poly Reference Mark cap 1" above grade N30°W 62.38'.
- ② Same set N27°E 68.25'.
- ③ Same set S30°E 103.49'.
- ④ Same set S27°W 93.98'.

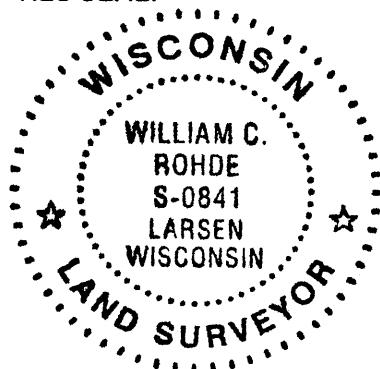
All rebars set with Wild T1 theodolite on a right line thru PK at corner location.

I set a standard white poly 'T' marker post along SE edge of a 4" sq. wood post with Wis DOT sign NNE of corner.

SCALE: 1"=50'

Unless otherwise indicated, all bearing tree ties are to a .25" dia. by 2.5" long PK nail with a 1.25" dia. steel washer driven into unblazed right face and a .25" dia. by 2.5" long PK nail with a 2" dia. steel washer stamped BT is also driven into unblazed face of bearing tree at DBH; the basis for measured bearings is by compass to nearest degree and all tie distances are measured horizontal by steel tape corrected to nearest 1/100th feet at standard temperature of 68° F.

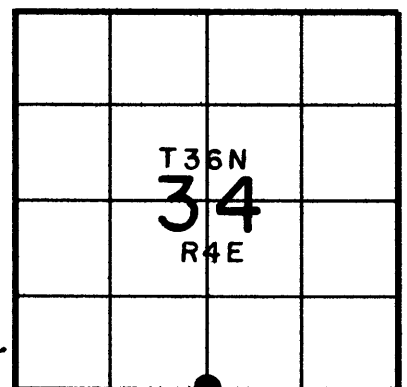
RLS SEAL:



LAND SURVEYOR CERTIFICATE:

I, William C. Rohde, hereby certify that I am duly licensed as a Professional Land Surveyor in the State of Wisconsin; that this USPLS monument location was determined by me and/or under my direct supervision and control; and that this U.S. Public Land Survey Monument Location Record is true and correct to the best of my knowledge and belief.

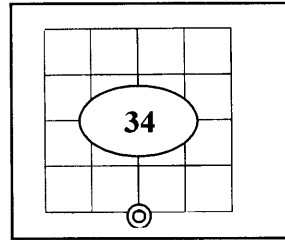
Signed: *William C. Rohde*
William C. Rohde RLS 841



U.S. PUBLIC LAND SURVEY MONUMENT RECORD

Note: This form is intended and designed to fulfill all requirements of Wisconsin Administrative Code Chapter A-E 7.08 (3) (a-i).

(a) Corner: South 1/4
 Section: 34
 Township: 36 N.
 Range: 04 E.
 Town: Lynne
 County: Oneida



(b) History of Original Corner

Original Surveyor	Alexander Anderson	Original B.T.'s	
Date of Survey	1864	10" Hemlock	N79°E 18 links
		14" Bw	S30°W 22 links

- In 1864 Alexander Anderson/GLO set a wood post as original section corner and made the above ties, all are now obliterated.

(f)(g)(h) Description of monument found at this corner and if it was accepted, state all evidence (material, testimonial, occupational, plats, records, other monuments) used as a basis for establishing location. If reestablished through last corner proportionate methods, indicate all monuments, distances and directions used to establish. Indicate type of monument and signpost found or set.

- In 1974 Robert H. Winat /RLS reestablished the corner as located by (Wis. Division of Highways survey 1925) and set a standard Berntsen alum. Monument 3' North of the centerline of USH 8 at the intersection with CTH 'T' and noted he witnessed the corner to a PK spike & washer set in 4 new BTs and a peg in a 4" square conc. BM monument per his Certified Land Corner Restoration dated Nov. 19, 1974.
- In June 1983, John Wallin, Wis. DOT survey crew chief filed a standard Preservation of Landmark form with Oneida Co. Surveyor as L-431, with corner location referenced to a standard Berntsen Alum. Monument set flush in all four quadrants N 30°39'E, 68.28'; S 34°27'E, 82.90'; S 30°39'W, 86.74'; and N 34°27'W, 64.41' on right lines thru corner monument location in USH 8.
- In Sept. 2006 William C Rohde/RLS found Winat's BTs with over grown marks he used to verify the corner location. He did not detect the monument below the highway. He found Winat's 1974 BM and Wallin's NW and NE witness monuments. He found a PK nail in the highway to be within .05' of the witness mark distances. So he replaced the P.K. with a 1/4" by 2.5" Mag. Nail. He could not find the SE witness monument and the SW witness monument was found destroyed. Rohde set 4 new witness marks as noted on Tie sheet #Z15 (3604340020).
- In summer of 2008 the corner was obliterated due to Highway mill and over lay construction. In Oct. 2008 I (Allen P. Oleink RLS #2619 WI D.O.T.) reset a survey nail flush with highway pavement, based on the record distances from Rohde's witness monuments. With the exception of the southwest rebar w/ cap I found the distance to be 93.84'.

REGISTER OF DEEDS OFFICE
 ONEIDA COUNTY, WIS.

FILED
 FEB 19 2009

At _____ O'Clock _____ M
THOMAS H. LEIGHTON
 REGISTER OF DEEDS

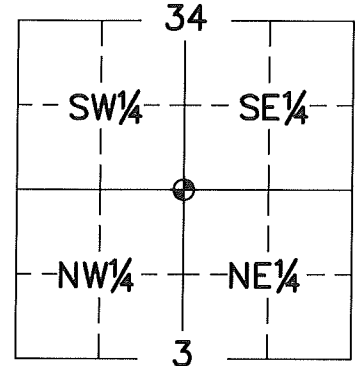
360434 00 20

U.S. PUBLIC LAND SURVEY MONUMENT RECORD ONEIDA COUNTY, WISCONSIN.

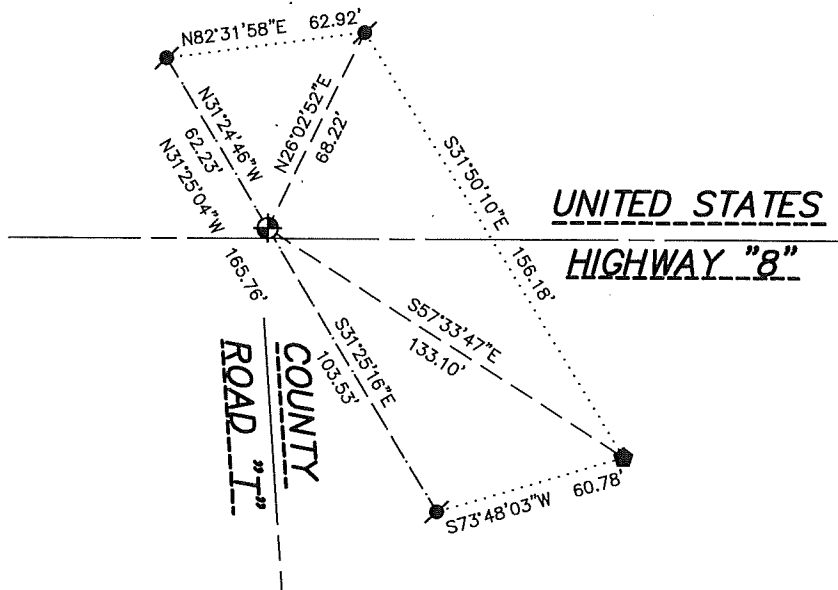
in accordance with Wisconsin Administrative Code, Chapter A-E 7.08 (3) (a)-(i) SIDE 1 OF 2

LOCATION (a) The identity of the corner, as referenced to the U.S. Public Land Survey System.

SECTION 34 - TOWN 36 NORTH - RANGE 4 EAST
 TOWNSHIP OF _____ LYNNE _____
 TYPE OF CORNER _____ SOUTH 1/4 CORNER _____
 TYPE OF MONUMENT _____ 1" OUTSIDE DIAMETER SURVEY NAIL _____
 PLSS IDENTIFIER NUMBER _____ 3604340020 _____
 NORTHING _____ 134829.2880' _____
 EASTING _____ 120653.8040' _____



PLAN VIEW (c) Reference to at least 4 witness monuments. Witness monuments shall be concrete, natural stone, iron, bearing trees or other equally durable material, except wood other than bearing trees; (d) A plan view drawing depicting the relevant monuments and reference ties which is sufficient in detail to enable accurate relocation of the corner monument if the corner monument is disturbed; (e) A description of any material discrepancy between the location of the corner as restored or reestablished and the location of that corner as previously restored or reestablished;



Oneida County
 Land Information Office
 Filed
 1/23/2024

LEGEND

- SET 1" OUTSIDE DIAMETER SURVEY NAIL
- FOUND 5/8" REBAR WITH CAP
- FOUND NGS BRONZE MONUMENT "TRIPOLI GPS"

WISCORS - ONEIDA COUNTY
 N: 134829.2880'
 E: 120653.8040'
 DATUM; NAD83 (2011)
 GNSS METHOD RTN - DIRECT
 GNSS CONTROL WISCORS VRS
 BEARING ORIENTATION:
 ONEIDA COUNTY GRID BEARINGS
 ROUNDED TO THE NEAREST 1 MINUTE
 HORIZONTAL SCALE: 1" = 60 FEET ±

RECOVERY PROCEDURES

SIDE 2 OF 2

(f) Whether the corner was restored through acceptance of an obliterated evidence location or a found perpetuated location;

LOCATION WAS PERPETUATED BY COUNTY COORDINATES AND FOUND SURVEY MARK NAIL FROM FIELD OBSERVATION, BY NATHAN S. FLAGSTAD, APRIL 19 2023.

ALLEN P. OLEINK; OCTOBER, 2008:

SUMMER OF 2008 THE CORNER WAS OBLITERATED DUE TO HIGHWAY MILL AND OVERLAY CONSTRUCTION. RESET SURVEY NAIL FLUSH WITH HIGHWAY PAVEMENT, BASED ON THE RECORD DISTANCES FROM ROHDE'S WITNESS MONUMENTS. WITH THE EXCEPTION OF THE SOUTHWEST REBAR WITH CAP I FOUND THE DISTANCE TO BE 93.84'.

NATHAN S. FLAGSTAD; NOVEMBER 2023:

SURVEY NAIL LIKELY DESTROYED DUE TO ROAD CONSTRUCTION OF UNITED STATES HIGHWAY "8". SET 1" OUTSIDE DIAMETER SURVEY NAIL IN ASPHALT AT COUNTY COORDINATE POSITION. THREE TIE MONUMENTS ARE FROM PREVIOUS TIE SHEET BY ALLEN P. OLEINIK. ESTABLISHED ONE NEW TIE USING THE NGS "TRIPOLI GPS" MONUMENT, NEW MEASUREMENTS ARE AS SHOWN.



SURVEYOR'S CERTIFICATE

Chapter 7.08 (3) (i)

I, NATHAN S. FLAGSTAD, HEREBY CERTIFY THAT THE U.S. PUBLIC LAND SURVEY MONUMENT RECORD SHOWN WAS DETERMINED BY ME OR UNDER MY DIRECTION AND IS CORRECT AND COMPLETE TO THE BEST OF MY KNOWLEDGE AND BELIEF.

1/22/2024

NATHAN S. FLAGSTAD
WISCONSIN PROFESSIONAL LAND SURVEYOR S-3166

DATE

Real Land Surveying
1356 International Drive
Eau Claire, WI 54701

715-514-4116