

U.S. PUBLIC LAND SURVEY MONUMENT RECORD

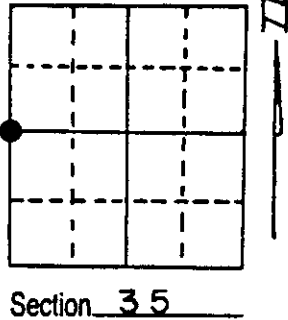
Note: This form is intended and designed to fulfill all requirements of Wisconsin Administrative Code, Chapter A-E 5.02, U.S. Public Land Survey Monument Record (3) (a) (b) (c) (d) (e) (f) (g) (h) (i). An additional sheet may be added if necessary to conform with said requirements.

(a) Corner location: Township 36 North

Range 4 East/~~West~~

Town/~~City/Village~~ Lynne

County Oneida



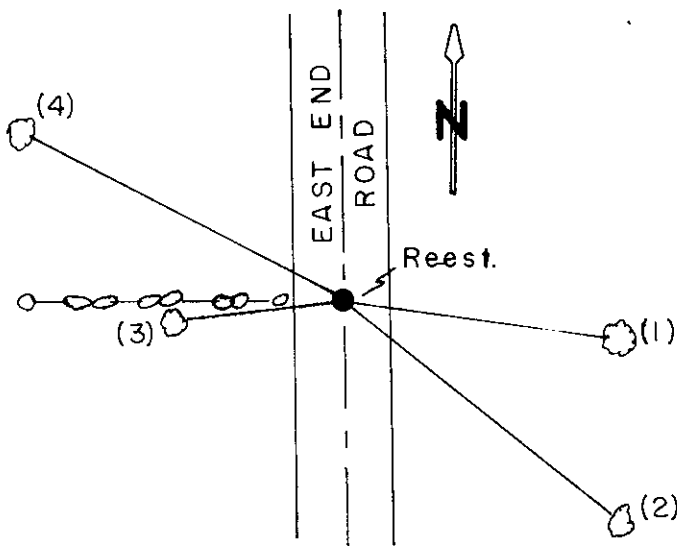
(b) (f) (g) (h) Description of monument found at this corner and if it was accepted, state all evidence (material, testimonial, occupational, plats, records, other monuments) used as a basis for accepting. If not accepted or if nothing was found, state evidence used as basis for establishing location. If reestablished through lost corner proportionate methods, indicate all monuments, distances and directions used to establish.

On June, 1937, V.A. Main, Registered Land Surveyor ran a survey line between Sections 34 and 35, T36N-R4E. It appears the present monuments at the Southwest and Northwest Section Corner of Section 35 are at the same position as the 1937 survey. Maine had a recorded distance for the total line of 5362.70'; our resurvey distance 5391.97'. Have a over run of 29.27'. Maine's field notes calls for 2667.06' from the Southwest Section Corner Section 35, to old fence line running East and West. Our distance 2698.87', a half chain error was suspected in the total line between Sections 34 and 35.

Testing the South part we find the half chain error; 2667.06' + 33.0' = 2700.06', a difference of 1.19'. This could be accounted for by individual alignment of the fence.

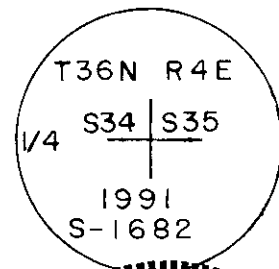
As the W-1/4 Corner was set erroneous and there is no evidence left of it, I accepted the old rock fence to the West on centerline of town road for the Quarter Corner position. It is 2.75' of an intermediate distance between the two Section Corners. This evidence is harmoniously related to existing local conditions.

(c) (d) (e) Plan view of corner with ties to at least 4 witness monuments. If in disagreement with previously established corner, show the distances between the two corners and also indicate the ties to the disputed corner.



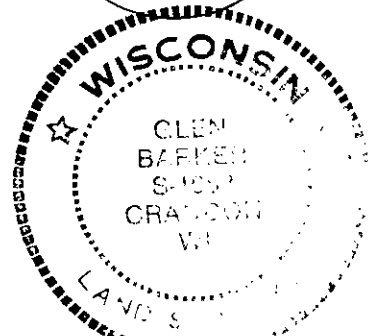
- (1) 4" Sugar Maple S82°E 43.44'
- (2) 5" Sugar Maple S51°E 55.07'
- (3) 5" White Birch S85°W 27.54'
- (4) 4" White Spruce N62°W 57.82'

2-1/4" Oneida County Alum. Mon.
3-1/4" Alloy Cap



(i) I, Glen Barker
(type or print name) certify that the corner location on this record was determined by me or under my direction and control and that this U.S. Public Land Survey Monument Record is correct and complete to the best of my knowledge and belief.

Glen Barker 11/4/91
Signature Date

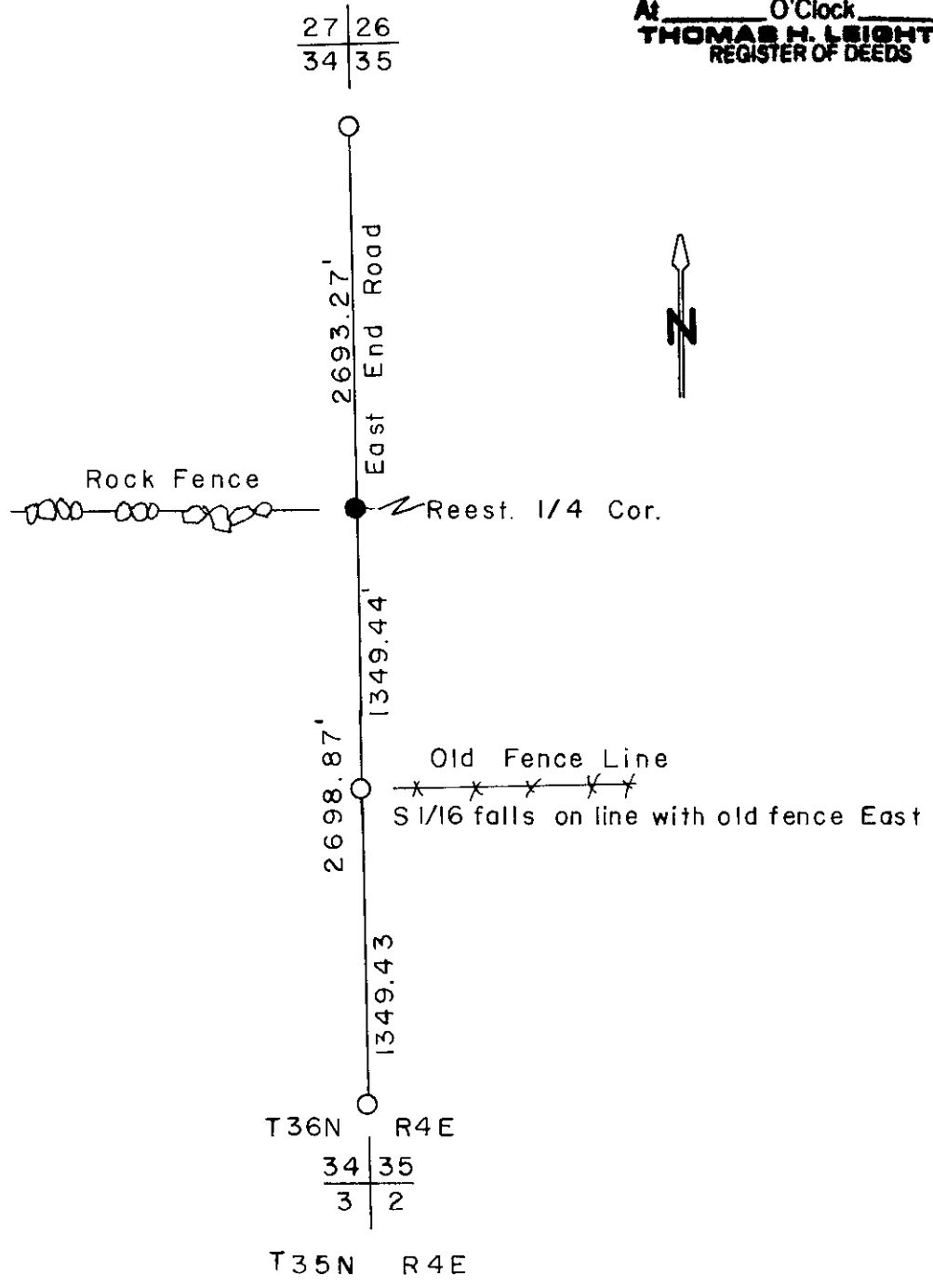


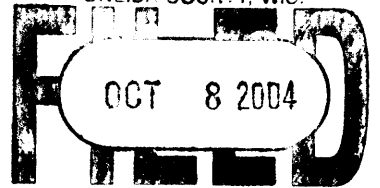
3004342000

Index No. X-17

Original corner established by Edward D. Palmer, Gov't Deputy Surveyor in 1865, from which 9" Hemlock bears S30W, 10 lks. and 16" Birch bears S65E, 17 lks.

REGISTER OF DEEDS OFFICE
ONEIDA COUNTY, WIS.
FILED
DEC 23 1891
At _____ O'Clock _____ M
THOMAS H. LEIGHTON
REGISTER OF DEEDS





At _____ Lock _____ M
THOMAS M. LEIGHTON
REGISTER OF DEEDS

This form is intended to fulfill the requirements of Chapter A-E7.08 (3)(a) thru (i) U.S. Public Land Survey Monument Location Record, Wisconsin Administrative Code. Use the reverse side of form for continuation.

U.S. PUBLIC LAND SURVEY MONUMENT LOCATION RECORD

USPLS CORNER: WEST 1/4 SECTION: 35 TOWNSHIP: 36 NORTH RANGE: 4 EAST
 NAME OF WATERWAY FOR M.C. CORNER : N/A SECTION LINE: N/A
 (CITY)(VILLAGE)(TOWN) OF: LYNNE COUNTY OF: ONEIDA

Description of monument found or placed and all other evidence used as the basis for monument location; including monuments and measurements required if the corner location was reestablished by lost corner proportionate methods. Also indicate name of the original surveyor, original survey date and the corner monument, bearing trees, witness or other reference monuments established, including measured bearing and distance ties, from available survey records.

THIS CORNER RESET AND REFERENCED WITH APPROVAL OF ONEIDA COUNTY SURVEYOR AS RECORD MONUMENT DESTROYED BY ROADWORK.

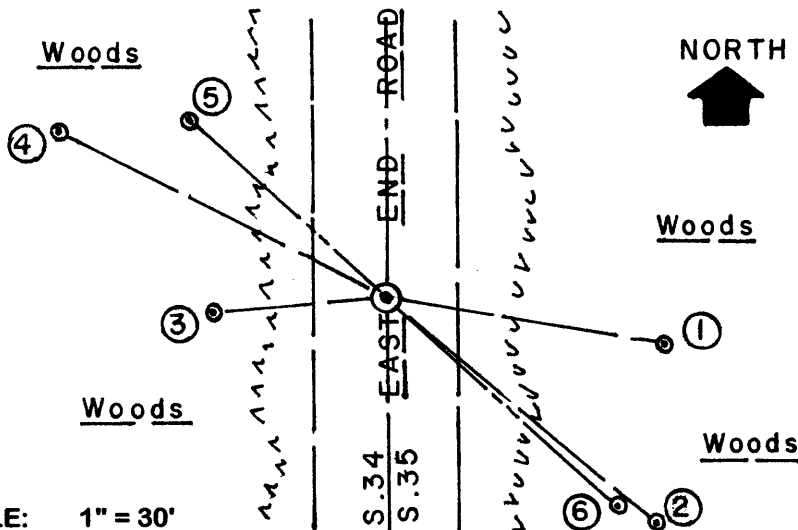
See U.S. Public Land Survey Monument Record dated November 4, 1991 as filed in Oneida County records by Glen Barker/RLS 1682 for historical and previous establishment details.

As roadway grading in progress, I set a 5/8" dia. by 24" long rebar 8" below gravelled roadway surface at corner location within 0.10' from found record BTs by Barker, which I measured new ties to and set rebar reference monuments on a right line thru the corner as noted below. I drove a PK nail in face of lower BT blazes to facilitate tie measurements and I painted old BT blazes and flagged rebar reference monuments blaze orange.

Corner falls in center of 22'+/- wide North/South graded roadway named East End Road.

This corner recovery completed July 19, 2004; there were no direct witnesses.

Plan view map of monument location with bearing and distance ties to a minimum of four(4) described witness or reference monuments of concrete, natural stone, iron, live bearing trees or equivalent material. If applicable, also show a minimum of two(2) bearing and distance ties to any other monument found and not accepted; including the bearing and distance from the accepted monument.



WITNESS MONUMENT TIES:

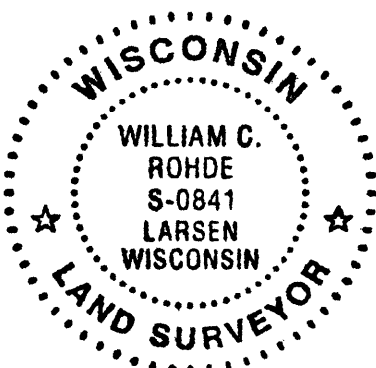
- ① Old 5.5" Maple BT S80°E 43.54'.
- ② Old 8" Maple BT S49°E 55.18'.
- ③ Old 8" Bw BT S85°W 27.74'.
- ④ Old 8" Spruce BT N62°W 57.40'.
- ⑤ 5/8" dia. by 24" long rebar set with RM cap 3" up N48°W 41.60'.
- ⑥ 5/8" dia. by 24" long rebar set with RM cap 3" up S48°E 48.75'.

Standard white poly 'T' marker post set 34.5' East.

SCALE: 1" = 30'

Unless otherwise indicated, all bearing tree ties are to a .25" dia. by 2.5" long PK nail with a 1.25" dia. steel washer driven into unblazed right face and a .25" dia. by 2.5" long PK nail with a 2" dia. steel washer stamped BT is also driven into unblazed face of bearing tree at DBH; the basis for measured bearings is by compass to nearest degree and all tie distances are measured horizontal by steel tape corrected to nearest 1/100th feet at standard temperature of 68° F.

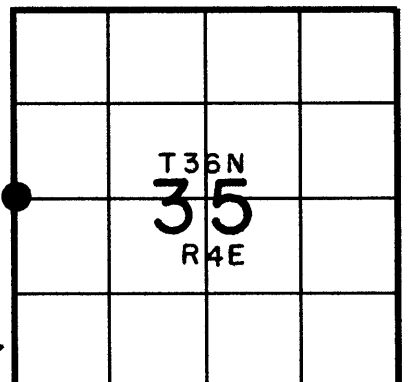
RLS SEAL:



LAND SURVEYOR CERTIFICATE:

I, William C. Rohde, hereby certify that I am duly licensed as a Professional Land Surveyor in the State of Wisconsin; that this USPLS monument location was determined by me and/or under my direct supervision and control; and that this U.S. Public Land Survey Monument Location Record is true and correct to the best of my knowledge and belief.

Signed William C. Rohde
 William C. Rohde RLS 841



SECTION LOCATION MAP
 INDEX NO. X 17