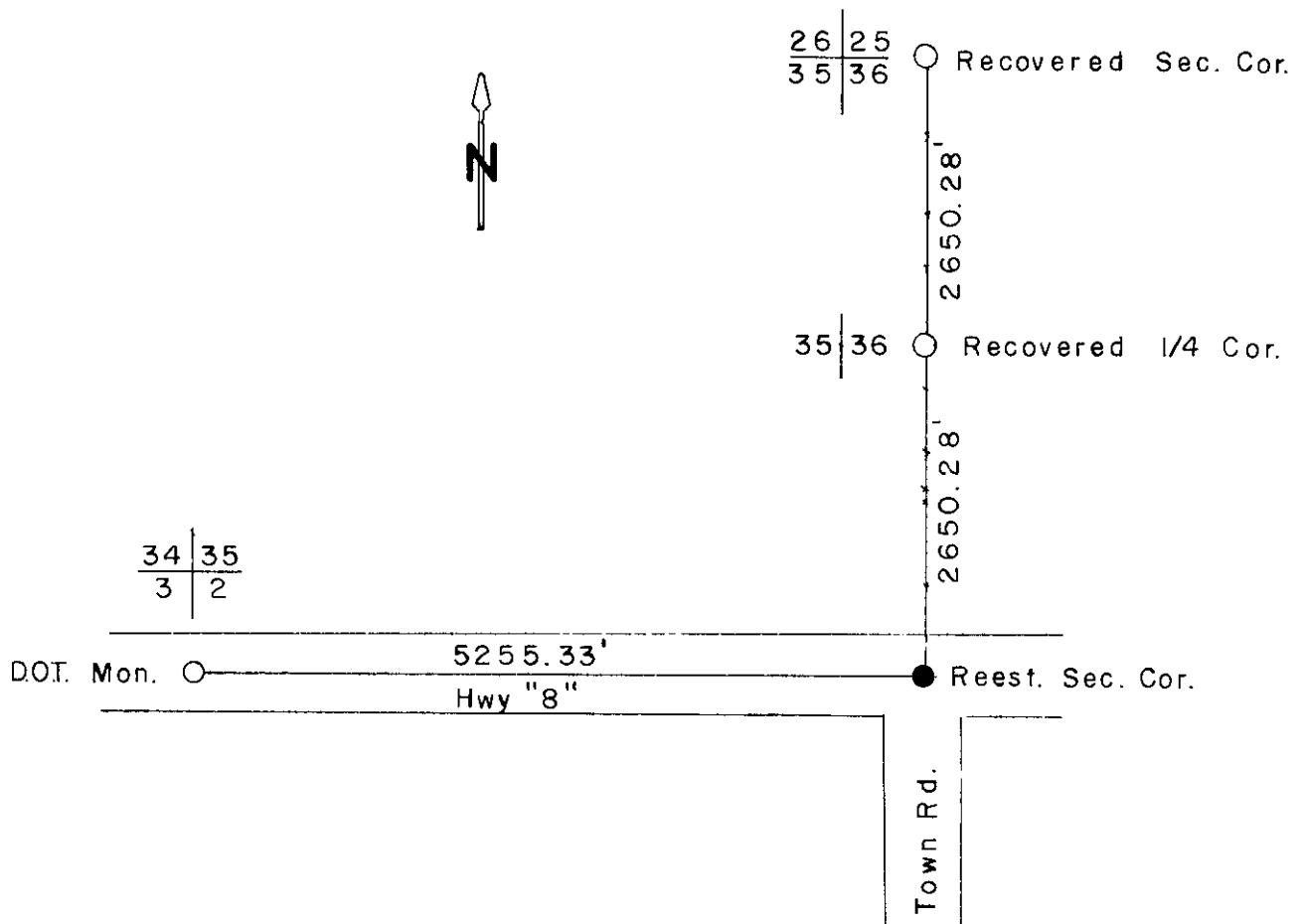
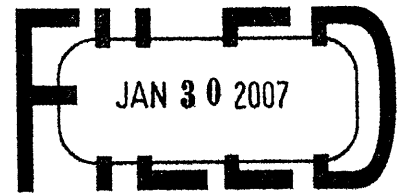


Original corner established by Alex Anderson, Gov't Deputy Surveyor in 1864, from which 7" Hemlock bears N32E, 15 lks., 8" Birch bears N50W, 23 lks., 10" Hemlock bears S18E, 22 lks and 9" Hemlock bears S12W, 25 lks.



REGISTER OF DEEDS OFFICE
 ONEIDA COUNTY, WIS.
FILED
 DEC 23 1991
 At _____ O'Clock _____ M
THOMAS H. LEIGHTON
 REGISTER OF DEEDS



At _____ O'Clock _____ M
THOMAS H. LEIGHTON
REGISTER OF DEEDS
Recorders Data

This form is intended to fulfill the requirements of Chapter A-E7.08 (3)(a) thru (i) U.S. Public Land Survey Monument Location Record, Wisconsin Administrative Code. Use the reverse side of form for continuation.

U.S. PUBLIC LAND SURVEY MONUMENT LOCATION RECORD

USPLS CORNER: SE SECTION: 35 TOWNSHIP: 36 NORTH RANGE: 4 EAST

NAME OF WATERWAY FOR M.C. CORNER : N/A SECTION LINE: N/A

~~(CITY)(VILLAGE)(TOWN) OF:~~ LYNNE COUNTY OF: ONEIDA

Description of monument found or placed and all other evidence used as the basis for monument location; including monuments and measurements required if the corner location was reestablished by lost corner proportionate methods. Also indicate name of the original surveyor, original survey date and the corner monument, bearing trees, witness or other reference monuments established, including measured bearing and distance ties, from available survey records.

In 1864, Alexander Anderson/GLO set a wood post as original section corner and noted OBT's: a 7" Hemlock N32°E 15 links; a 10" Hemlock S18°E 22 links; an 8" Bw N50°W 23 links and a 9" Hemlock S12°W 25 links; all are now obliterated.

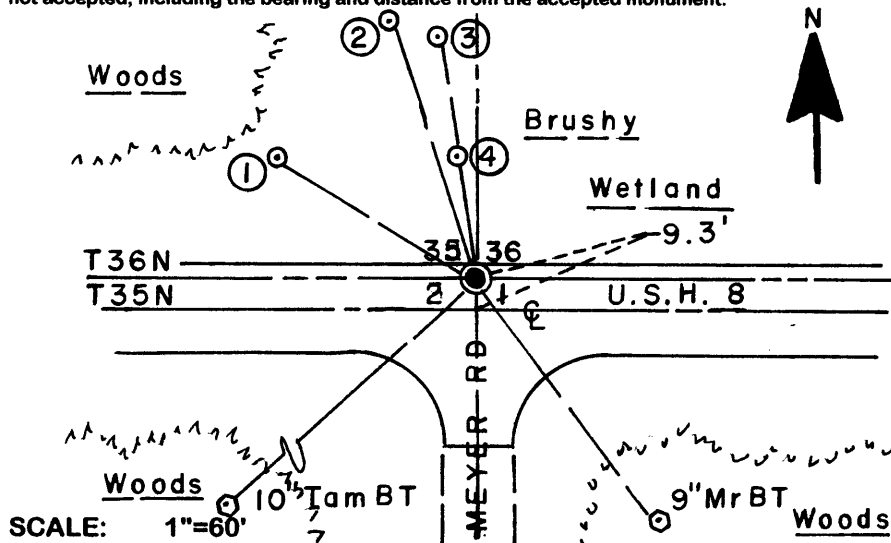
In 1991, Glen Barker/RLS 1682 indicates an 'X' in Highway 8 pavement at this corner and noted new witnesses: a standard aluminum monument with stamped Oneida County cap N60°W 72.27'; Power Pole N21°W 86.48'; 6" Mr S37°E 96.45' and a 6" Tamarack S47°W 119.75', per his USPLS Monument Location Record filed in Oneida County records.

On September 7, 2006 I found Barkers NW aluminum witness monument OK 1" above grade with a standard white poly 'T' marker post 9" North; found power pole NW with a bent over 40d spike with old flagging remnant in West face; found his SE BT as West trunk of a double 9" Mr with blue painted faintly scribed upper & lower blazes nearly shut and found his SW BT as a 10" Tamarack with upper & lower blazes shut but scars painted blue.

I did not chisel below the existing highway pavement overlay for the 'X' in concrete pavement, so I reset the corner with a 1/4" dia. by 2.5" long Mag nail into the pavement, using Barkers record tie distances, for new witness ties noted below.

This corner reestablished with approval of Oneida County Surveyor Michael Romportl. There were no direct witnesses.

Plan view map of monument location with bearing and distance ties to a minimum of four(4) described witness or reference monuments of concrete, natural stone, iron, live bearing trees or equivalent material. If applicable, also show a minimum of two(2) bearing and distance ties to any other monument found and not accepted; including the bearing and distance from the accepted monument.



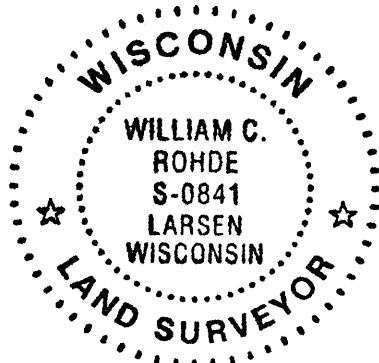
WITNESS MONUMENT TIES:

- ① Older standard aluminum witness monument found with stamped Oneida County cap N58°W 72.27'.
- ② Replaced bent 40d spike in West face of power pole with a 40d concrete nail N18°W 86.48'.
- ③ 5/8" dia. by 24" long rebar set with yellow poly Reference Mark cap 2" up N10°W 76.02'.
- ④ Same rebar set N10°W 38.47'.

Reset standard white poly 'T' marker post 18.8' North of corner.

Unless otherwise indicated, all bearing tree ties are to a .25" dia. by 2.5" long PK nail with a 1.25" dia. steel washer driven into unblazed right face and a .25" dia. by 2.5" long PK nail with a 2" dia. steel washer stamped BT is also driven into unblazed face of bearing tree at DBH; the basis for measured bearings is by compass to nearest degree and all tie distances are measured horizontal by steel tape corrected to nearest 1/100th feet at standard temperature of 68° F.

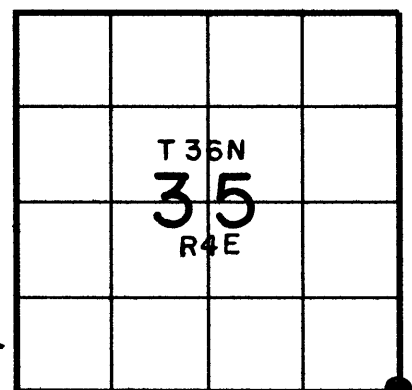
RLS SEAL:



LAND SURVEYOR CERTIFICATE:

I, William C. Rohde, hereby certify that I am duly licensed as a Professional Land Surveyor in the State of Wisconsin; that this USPLS monument location was determined by me and/or under my direct supervision and control; and that this U.S. Public Land Survey Monument Location Record is true and correct to the best of my knowledge and belief.

Signed: *William C. Rohde*
William C. Rohde RLS 841

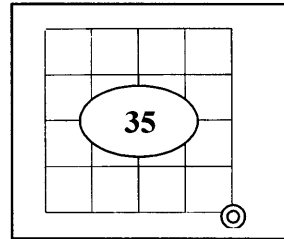


SECTION LOCATION MAP
INDEX NO. Z 21
3604350000

U.S. PUBLIC LAND SURVEY MONUMENT RECORD

Note: This form is intended and designed to fulfill all requirements of Wisconsin Administrative Code Chapter A-E 7.08 (3) (a-i).

(a) Corner: South East
 Section: 35
 Township: 36 N.
 Range: 04 E.
 Town: Lynne
 County: Oneida



(b) History of Original Corner

Original Surveyor	Alexander Anderson	Original B.T.'s	
Date of Survey	1864	7" Hemlock	N32°E 15 links
		10" Hemlock	S18°E 22 links
		8" Bw	N50°W 23 links
		9" Hemlock	S12°W 25 links

- In 1864 Alexander Anderson/GLO set a wood post as original section corner and made the above ties, all are now obliterated.

(f)(g)(h) Description of monument found at this corner and if it was accepted, state all evidence (material, testimonial, occupational, plats, records, other monuments) used as a basis for establishing location. If reestablished through last corner proportionate methods, indicate all monuments, distances and directions used to establish. Indicate type of monument and signpost found or set.

- In 1991 Glen Barker/RLS 1682 indicates an "X" in Highway 8 pavement at this corner and noted new witnesses: a standard aluminum monument with Oneida Co. cap N60°W 72.27'; Power Pole N21°W 86.48'; 6"Mr S37°E 96.45' and a 6"Tamarack S47°W 119.75'; per his USPLS Monument Location Record filed in Oneida Co. records.
- On 9-7-2006 William C Rohde/RLS S-0841 found Barkers NW alum. Wit. Monument OK 1" above grade with a standard white poly 'T' post 9" North; found power pole NW with a bent over 40d spike with old flagging r in West face, Rohde replaced with 40d conc. nail N18°W 86.48'; found his SE BT as West trunk of a double 9" Mr with blue painted upper and lower blazes nearly shut, and found his SW BT as a 10" Tamarack with blue painted upper and lower blazes nearly shut. Rohde set a 5/8" by 24" rebar with yellow cap 2" up N10° W 76.02' and the same N10°W 38.47'. Rohde also set a white poly "T" post 18.8' North of corner. He did not chisel below the existing highway pavement overlay for "X" in conc., so he reset the corner with a 1/4" by 2.5" Mag. nail using barkers record distances. As noted on sheet #Z21 (3604350000).
- In summer of 2008 the corner was obliterated due to Highway mill and over lay construction. Oct. 2008 I (Allen P. Oleink RLS #2619 WI D.O.T.) found all of Rohde's reference marks in good shape with the exception of the SE BT I found a PK nail w/ washer in a 9" maple w/ double blazes to be 95.75'. I reset a survey nail flush with highway pavement based on record distances from existing ties.

REGISTER OF DEEDS OFFICE
 ONEIDA COUNTY, WIS.

FILED
 FEB 19 2009

At _____ O'Clock _____ M
THOMAS H. LEIGHTON
 REGISTER OF DEEDS

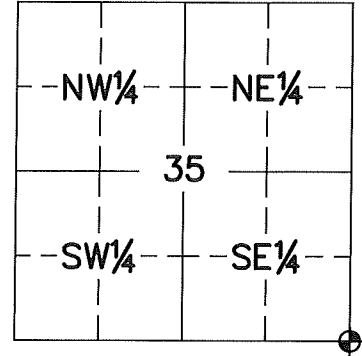
3604350000

U.S. PUBLIC LAND SURVEY MONUMENT RECORD ONEIDA COUNTY, WISCONSIN.

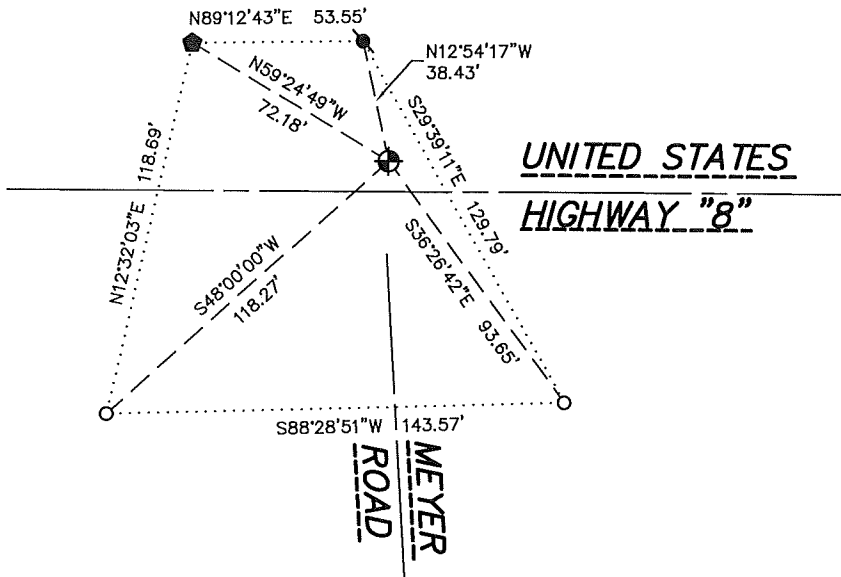
in accordance with Wisconsin Administrative Code, Chapter A-E 7.08 (3) (a)-(i) SIDE 1 OF 2

LOCATION (a) The identity of the corner, as referenced to the U.S. Public Land Survey System.

SECTION 35 - TOWN 36 NORTH - RANGE 4 EAST
 TOWNSHIP OF _____ LYNNE _____
 TYPE OF CORNER _____ SOUTHEAST CORNER _____
 TYPE OF MONUMENT _____ 1" OUTSIDE DIAMETER SURVEY NAIL _____
 PLSS IDENTIFIER NUMBER _____ 3604350000 _____
 NORTHING _____ 134812.7660' _____
 EASTING _____ 128539.8310' _____



PLAN VIEW (c) Reference to at least 4 witness monuments. Witness monuments shall be concrete, natural stone, iron, bearing trees or other equally durable material, except wood other than bearing trees; (d) A plan view drawing depicting the relevant monuments and reference ties which is sufficient in detail to enable accurate relocation of the corner monument if the corner monument is disturbed; (e) A description of any material discrepancy between the location of the corner as restored or reestablished and the location of that corner as previously restored or reestablished;



Oneida County
 Land Information Office
 Filed
 1/23/2024

LEGEND

- SET 1" OUTSIDE DIAMETER SURVEY NAIL
- FOUND 5/8" REBAR WITH CAP
- FOUND ALUMINUM MONUMENT
- SET 1" OUTSIDE DIAMETER x 18" IRON PIPE
WEIGHING 1.13 POUNDS PER LINEAR FOOT

WISCRS - ONEIDA COUNTY
 N: 134812.7660'
 E: 128539.8310'
 DATUM; NAD83 (2011)
 GNSS METHOD RTN - DIRECT
 GNSS CONTROL WISCORS VRS
 BEARING ORIENTATION:
 ONEIDA COUNTY GRID BEARINGS
 ROUNDED TO THE NEAREST 1 MINUTE
 HORIZONTAL SCALE: 1" = 60 FEET ±

RECOVERY PROCEDURES

SIDE 2 OF 2

(f) Whether the corner was restored through acceptance of an obliterated evidence location or a found perpetuated location;

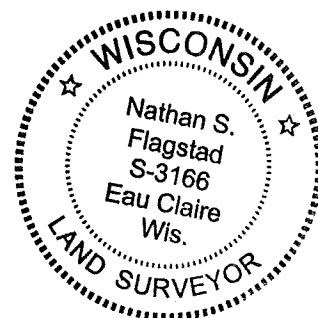
LOCATION WAS PERPETUATED BY COUNTY COORDINATES AND FOUND SURVEY MARK NAIL FROM FIELD OBSERVATION, BY NATHAN S. FLAGSTAD, APRIL 19, 2023.

ALLEN P. OLEINIK; OCTOBER, 2008:

SUMMER OF 2008 THE CORNER WAS OBLITERATED DUE TO HIGHWAY MILL AND OVERLAY CONSTRUCTION. SET SURVEY NAIL FLUSH WITH HIGHWAY PAVEMENT, BASED ON RECORD DISTANCES FROM EXISTING TIES. I FOUND ALL ROHDE'S REFERENCE MARKS IN GOOD SHAPE WITH THE EXCEPTION OF THE SOUTHEAST BEARING TREE, I FOUND PK NAIL WITH WASHER IN 9" MAPLE WITH DOUBLE BLAZE TO BE 95.75'.

NATHAN S. FLAGSTAD; NOVEMBER 2023:

SURVEY NAIL LIKELY DESTROYED DUE TO ROAD CONSTRUCTION OF UNITED STATES HIGHWAY "8". SET 1" OUTSIDE DIAMETER SURVEY NAIL IN ASPHALT AT COUNTY COORDINATE POSITION. TWO TIE MONUMENTS ARE FROM PREVIOUS TIE SHEET BY ALLEN P. OLEINIK. SET TWO NEW TIES TO REPLACE THE BEARING TREES. NEW MEASUREMENTS ARE AS SHOWN.



SURVEYOR'S CERTIFICATE

Chapter 7.08 (3) (i)

I, NATHAN S. FLAGSTAD, HEREBY CERTIFY THAT THE U.S. PUBLIC LAND SURVEY MONUMENT RECORD SHOWN WAS DETERMINED BY ME OR UNDER MY DIRECTION AND IS CORRECT AND COMPLETE TO THE BEST OF MY KNOWLEDGE AND BELIEF.

1/22/2024

NATHAN S. FLAGSTAD
WISCONSIN PROFESSIONAL LAND SURVEYOR S-3166

DATE

Real Land Surveying
1356 International Drive
Eau Claire, WI 54701

715-514-4116