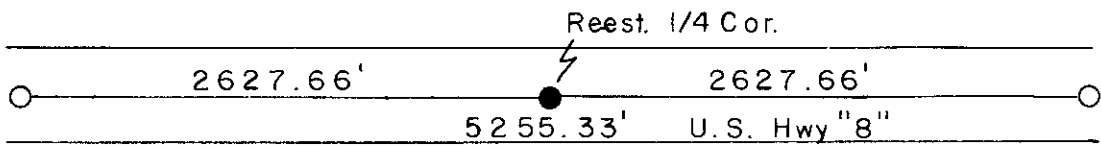




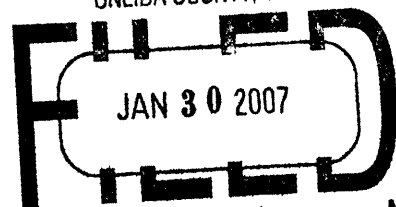


T 36N  
34 | 35  
3 | 2  
T 35N



35 | 36 R 4 E  
2 | 1

REGISTER OF DEEDS OFFICE  
ONEIDA COUNTY, WIS.  
**FILED**  
DEC 23 1991  
At \_\_\_\_\_ O'Clock \_\_\_\_\_ M  
THOMAS H. LEIGHTON  
REGISTER OF DEEDS



At \_\_\_\_\_ O'Clock \_\_\_\_\_ M  
THOMAS H. LEIGHTON  
REGISTER OF DEEDS

Recorders Data

This form is intended to fulfill the requirements of Chapter A-E7.08 (3)(a) thru (i) U.S. Public Land Survey Monument Location Record, Wisconsin Administrative Code. Use the reverse side of form for continuation.

**U.S. PUBLIC LAND SURVEY MONUMENT LOCATION RECORD**

USPLS CORNER: SOUTH 1/4 SECTION: 35 TOWNSHIP: 36 NORTH RANGE: 4 EAST  
 NAME OF WATERWAY FOR M.C. CORNER : N/A SECTION LINE: N/A  
 (CITY)(VILLAGE)(TOWN) OF: LYNNE COUNTY OF: ONEIDA

Description of monument found or placed and all other evidence used as the basis for monument location; including monuments and measurements required if the corner location was reestablished by lost corner proportionate methods. Also indicate name of the original surveyor, original survey date and the corner monument, bearing trees, witness or other reference monuments established, including measured bearing and distance ties, from available survey records.

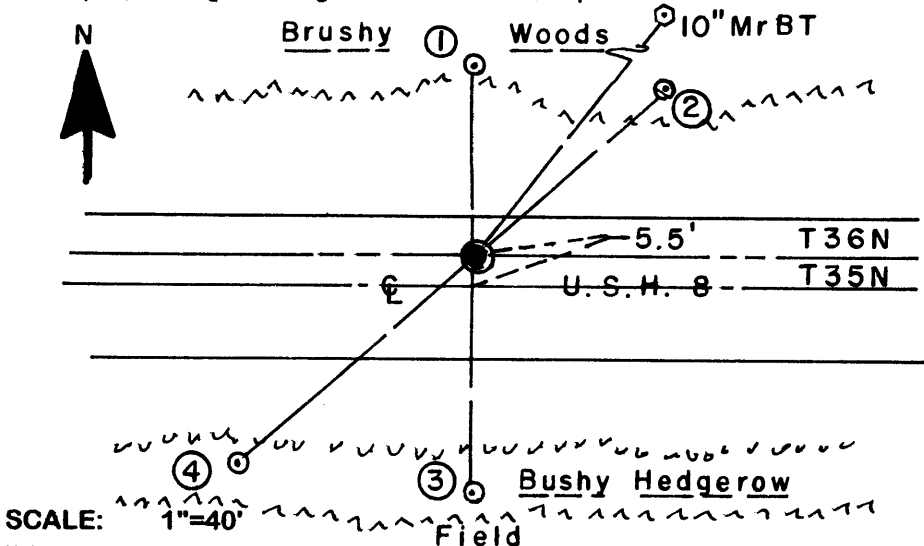
In 1864, Alexander Anderson/GLO set a wood post as original 1/4 corner and noted OBTs: a 24" Hemlock N50°E 15 links and a 10" Hemlock S60°W 20 links; all are now obliterated.

In November 1991, Glen Barker/RLS 1182 notes an 'X' at corner in concrete pavement of USH 8, set midway on a right line between opposite section corners and noted new witnesses: a standard aluminum reference monument with stamped Oneida County cap North 40.00', found OK flush to grade with standard white poly 'T' marker post 5" North; a 7" Mr N86°E 69.12' found as a 10" Mr with upper & lower blazes shut but scars plain, but at N38°E at record distance; a 1" dia. iron pipe S46°W 65.63' found OK 1" above grade and I set a yellow poly Reference Mark cap in uncapped top; an NGS cast aluminum benchmark monument cast into a 10" dia. concrete base N42°W 127.04', found OK and flush with grade. I did not detect any monument at corner location nor chiseled out pavement to find 'X' in old concrete pavement below, so I reset the corner location with a 1/4" dia. by 2.5" long Mag nail driven flush into pavement using ties from record witness monuments North and SW; all per Barkers U.S. Public Land Survey Monument record, dated November 4, 1991, as filed in Oneida County records. This corner rereferenced with approval of Oneida County Surveyor Michael Romportl.

In June 1991, Barker notes an 'X' in pavement at this corner per his retracement survey of Section 35 filed as B-3036 in Oneida County survey records.

This recovery completed September 6, 2006; there were no direct witnesses.

Plan view map of monument location with bearing and distance ties to a minimum of four(4) described witness or reference monuments of concrete, natural stone, iron, live bearing trees or equivalent material. If applicable, also show a minimum of two(2) bearing and distance ties to any other monument found and not accepted; including the bearing and distance from the accepted monument.



**WITNESS MONUMENT TIES:**

- ① Found aluminum onument with stamped Oneida County cap flush at grade North 40.00'.
- ② Set a 5/8" dia. by 24" long rebar with yellow poly Reference Mark cap 2" above grade N48°E 52.28'.
- ③ Same capped rebar set South 49.55' on a right line thru corner to Witness Monument No. 1.
- ④ Found an older 1" dia. iron pipe I capped S48°W 65.63'. I set a blaze orange wire stake flag at each witness monument.

Unless otherwise indicated, all bearing tree ties are to a .25" dia. by 2.5" long PK nail with a 1.25" dia. steel washer driven into unblazed right face and a .25" dia. by 2.5" long PK nail with a 2" dia. steel washer stamped BT is also driven into unblazed face of bearing tree at DBH; the basis for measured bearings is by compass to nearest degree and all tie distances are measured horizontal by steel tape corrected to nearest 1/100th feet at standard temperature of 68° F.

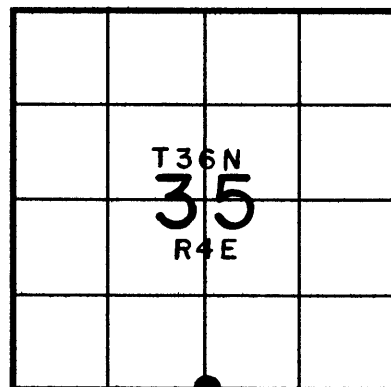
RLS SEAL:



**LAND SURVEYOR CERTIFICATE:**

I, William C. Rohde, hereby certify that I am duly licensed as a Professional Land Surveyor in the State of Wisconsin; that this USPLS monument location was determined by me and/or under my direct supervision and control; and that this U.S. Public Land Survey Monument Location Record is true and correct to the best of my knowledge and belief.

Signed: *William C. Rohde*  
William C. Rohde RLS 841

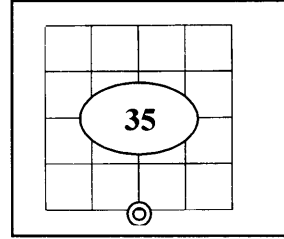


SECTION LOCATION MAP  
INDEX NO. 2 19  
3604350020

## U.S. PUBLIC LAND SURVEY MONUMENT RECORD

Note: This form is intended and designed to fulfill all requirements of Wisconsin Administrative Code Chapter A-E 7.08 (3) (a-i).

(a) Corner: South 1/4  
 Section: 35  
 Township: 36 N.  
 Range: 04 E.  
 Town: Lynne  
 County: Oneida



(b) History of Original Corner

Original Surveyor	Alexander Anderson	Original B.T.'s	
Date of Survey	1864	24" Hemlock	N50°E 15 links
		10" Hemlock	S60°W 20 links

- In 1864 Alexander Anderson/GLO set a wood post as original section corner and made the above ties, all are now obliterated.
- (f)(g)(h) Description of monument found at this corner and if it was accepted, state all evidence (material, testimonial, occupational, plats, records, other monuments) used as a basis for establishing location. If reestablished through last corner proportionate methods, indicate all monuments, distances and directions used to establish. Indicate type of monument and sign post found or set.
- In Nov. 1991 Glen Barker/RLS indicates an "X" in Highway 8 pavement, set midway between opposite section corners and noted new witnesses: a standard alum. Monument with Oneida Co. cap North 40.0'; a 7" Mr. N86°E, 69.12; a 1" I.P. S46°W, 65.63'; an NGS alum. Bench Mark set in a 10" conc. base N42°W, 127.04'.
- In Jan. 2007 William C Rohde/RLS found Barkers North alum. Wit. Monument OK flush w/ grade with a standard white poly 'T' post 5" North; found a 10" Mr. with upper and lower blazes at N 38° E at record distance; found the S.E. 1" I.P. 1" above grade and set a yellow cap in top; found the N.W. monument OK and flush w/ ground. He set a 5/8" by 24" rebar w/ yellow cap 2" above grade N 48° E, 52.28', and a 5/8" by 24" rebar w/ yellow cap South 49.55'. As noted on Tie sheet #Z19 (3604350020).
- In summer of 2008 the corner was obliterated due to Highway mill and over lay construction. Oct. 2008 I (Allen P. Oleink RLS #2619 WI D.O.T.) found all of Rohde's reference marks in good shape with the exception of the South capped rebar I found the distance to be 46.45', and the N.E. Bt. I found a 12" blazed maple at a distance of 68.3'. I reset a survey nail flush with highway pavement, based on all other record distances from existing ties.

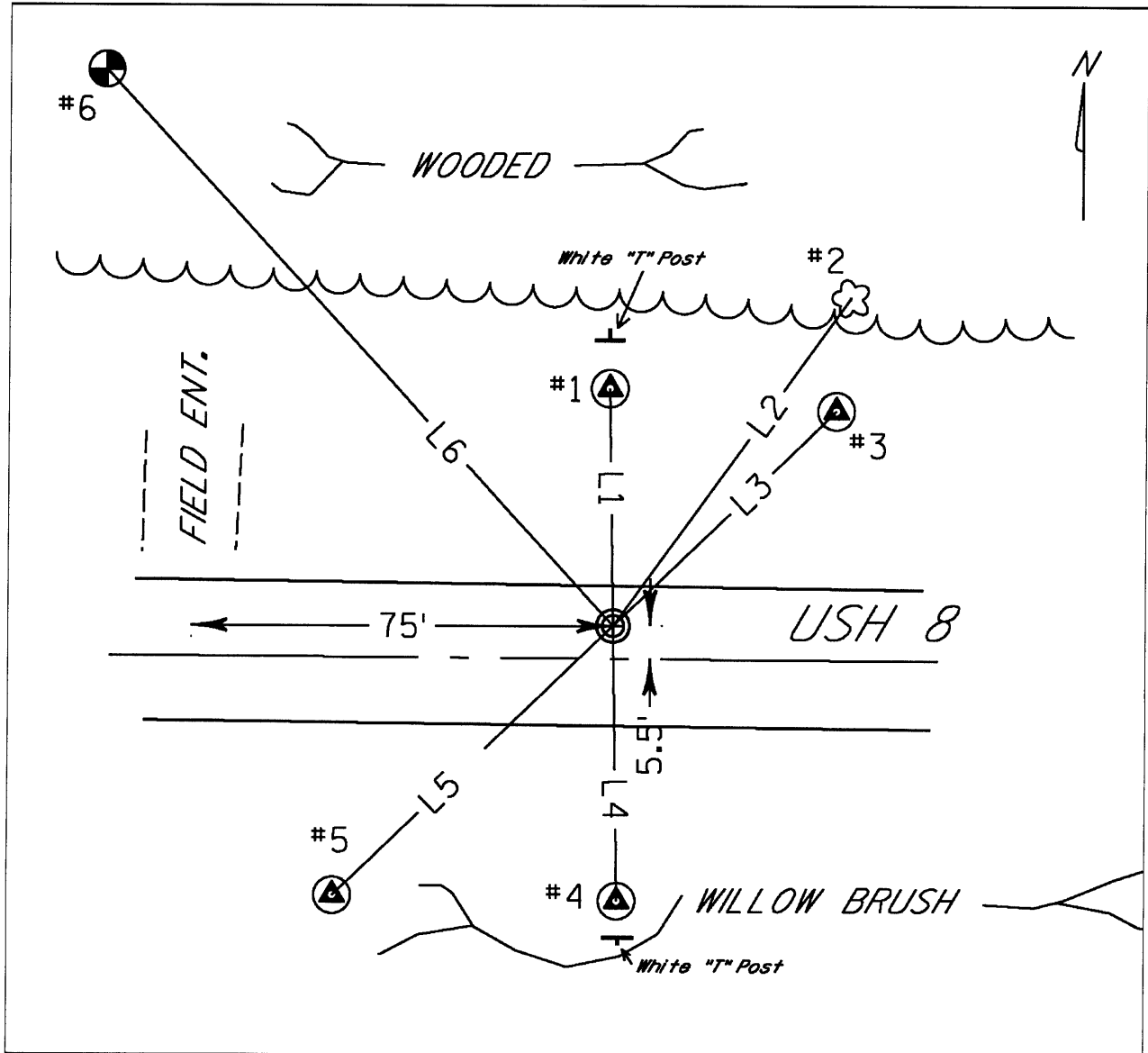
REGISTER OF DEEDS OFFICE  
 ONEIDA COUNTY, WIS.

**FILED**  
 FEB 19 2009

At \_\_\_\_\_ O'Clock \_\_\_\_\_ M  
**THOMAS H. LEIGHTON**  
 REGISTER OF DEEDS

3604350020

(c)(d)(e) Plan view of corner with ties to at least 4 witnesses. If in disagreement with previously established corner, show the distance between the two corners and also indicate the tie to the disputed corner



**LEGEND:**

- Corner is a survey nail set flush into pavement
- #1-Found alum. Monument with Oneida Co. cap  
With a White composite "T" post set on the North side.
- #2-Blaze mark on south side of a 12" maple.
- #3- 5/8" by 24" rebar w/ Yellow cap
- #4- 5/8" by 24" rebar w/ Yellow cap  
With a White composite "T" post set on the South side
- #5- 5/8" by 24" rebar w/ Yellow cap
- #6-Steel rod set in conc. BM  
With an Orange composite post set on the North side.

**COURSE TABLE:**

Bearings orientated to Oneida Co. Coordinate system NAD 83 (1991)

L1	N1°03'21"W	40.00'
L2	N35°54'31"E	68.3'
L3	N46°03'37"E	52.28'
L4	S1°00'33"E	46.45'
L5	S46°01'25"W	65.63'
L6	N42°29'43"W	127.04'

(i) I, Allen P Oleinik, Registered Land Surveyor No 2619, hereby certify that the corner location on this record was referenced by me and that this U.S. Public Land Survey Monument Record is correct and complete to the best of my knowledge and belief.

*Allen P Oleinik*

2-17-09

Signature

Date



Index No. Z-19

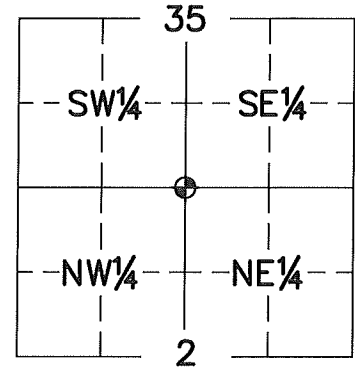
*3604350029*  
*3604350035*

# U.S. PUBLIC LAND SURVEY MONUMENT RECORD ONEIDA COUNTY, WISCONSIN.

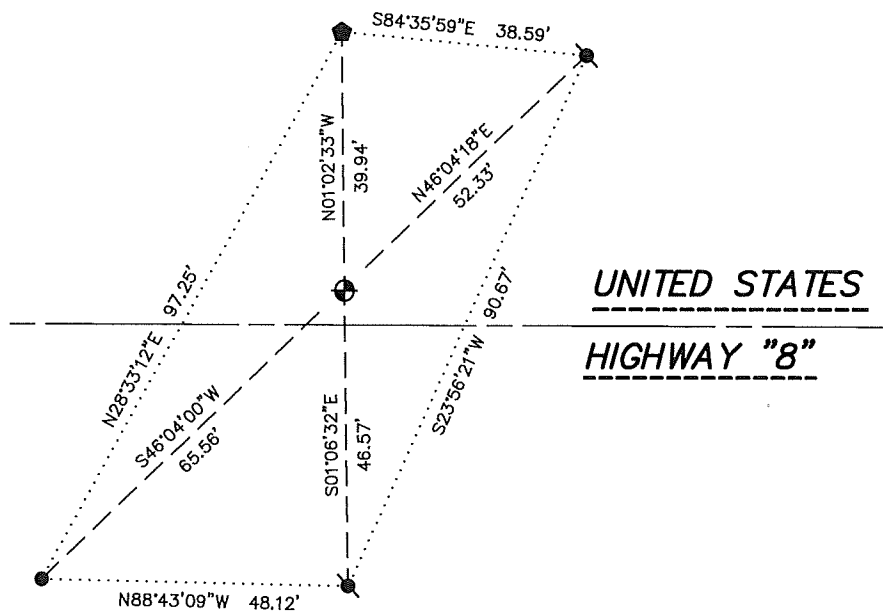
in accordance with Wisconsin Administrative Code, Chapter A-E 7.08 (3) (a)-(i) SIDE 1 OF 2

## LOCATION (a) The identity of the corner, as referenced to the U.S. Public Land Survey System.





SECTION 35 – TOWN 36 NORTH – RANGE 4 EAST  
 TOWNSHIP OF \_\_\_\_\_ LYNNE \_\_\_\_\_  
 TYPE OF CORNER \_\_\_\_\_ SOUTH 1/4 CORNER \_\_\_\_\_  
 TYPE OF MONUMENT \_\_\_\_\_ 1" OUTSIDE DIAMETER SURVEY NAIL \_\_\_\_\_  
 PLSS IDENTIFIER NUMBER \_\_\_\_\_ 3604350020 \_\_\_\_\_  
 NORTHING \_\_\_\_\_ 134816.5790' \_\_\_\_\_  
 EASTING \_\_\_\_\_ 125912.3750' \_\_\_\_\_



## PLAN VIEW (c) Reference to at least 4 witness monuments. Witness monuments shall be concrete, natural stone, iron, bearing trees or other equally durable material, except wood other than bearing trees; (d) A plan view drawing depicting the relevant monuments and reference ties which is sufficient in detail to enable accurate relocation of the corner monument if the corner monument is disturbed; (e) A description of any material discrepancy between the location of the corner as restored or reestablished and the location of that corner as previously restored or reestablished;



### LEGEND

-  SET 1" OUTSIDE DIAMETER SURVEY NAIL
-  FOUND 3/4" REBAR WITH CAP
-  FOUND ALUMINUM MONUMENT
-  FOUND 1" IRON PIPE

WISCRS – ONEIDA COUNTY  
 N: 134816.5790'  
 E: 125912.3750'  
 DATUM; NAD83 (2011)  
 GNSS METHOD RTN – DIRECT  
 GNSS CONTROL WISCORS VRS  
 BEARING ORIENTATION:  
 ONEIDA COUNTY GRID BEARINGS  
 ROUNDED TO THE NEAREST 1 MINUTE  
 HORIZONTAL SCALE: 1" = 30 FEET ±

# RECOVERY PROCEDURES

SIDE 2 OF 2

(f) Whether the corner was restored through acceptance of an obliterated evidence location or a found perpetuated location;

LOCATION WAS PERPETUATED BY COUNTY COORDINATES AND FOUND SURVEY MARK NAIL FROM FIELD OBSERVATION, BY NATHAN S. FLAGSTAD, APRIL 19, 2023.

ALLEN P. OLEINIK; OCTOBER, 2008:

SUMMER OF 2008 THE CORNER WAS OBLITERATED DUE TO HIGHWAY MILL AND OVERLAY CONSTRUCTION. SET SURVEY NAIL FLUSH WITH HIGHWAY PAVEMENT, BASED ON ALL OTHER RECORD DISTANCES FROM EXISTING TIES. I FOUND ALL ROHDE'S REFERENCE MARKS IN GOOD SHAPE WITH THE EXCEPTION OF THE SOUTH CAPPED REBAR, I FOUND THE DISTANCE TO BE 46.45' AND THE NORTHEAST BEARING TREE, FOUND A 12" BLAZED MAPLE AT A DISTANCE OF 68.3'.

NATHAN S. FLAGSTAD; NOVEMBER 2023:

SURVEY NAIL LIKELY DESTROYED DUE TO ROAD CONSTRUCTION OF UNITED STATES HIGHWAY "8". SET 1" OUTSIDE DIAMETER SURVEY NAIL IN ASPHALT AT COUNTY COORDINATE POSITION. FOUR TIE MONUMENTS ARE FROM PREVIOUS TIE SHEET BY ALLEN P. OLEINIK. NEW MEASUREMENTS ARE AS SHOWN.



## SURVEYOR'S CERTIFICATE

Chapter 7.08 (3) (i)

I, NATHAN S. FLAGSTAD, HEREBY CERTIFY THAT THE U.S. PUBLIC LAND SURVEY MONUMENT RECORD SHOWN WAS DETERMINED BY ME OR UNDER MY DIRECTION AND IS CORRECT AND COMPLETE TO THE BEST OF MY KNOWLEDGE AND BELIEF.

1/22/2024

NATHAN S. FLAGSTAD  
WISCONSIN PROFESSIONAL LAND SURVEYOR S-3166

DATE

Real Land Surveying  
1356 International Drive  
Eau Claire, WI 54701

715-514-4116