

U.S. PUBLIC LAND SURVEY MONUMENT RECORD

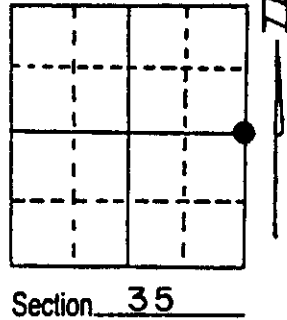
Note: This form is intended and designed to fulfill all requirements of Wisconsin Administrative Code, Chapter A-E 5.02, U.S. Public Land Survey Monument Record (3) (a) (b) (c) (d) (e) (f) (g) (h) (i). An additional sheet may be added if necessary to conform with said requirements.

(a) Corner location: Township 36 North

Range 4 East/~~West~~

Town/~~City/Village~~ Lynne

County Oneida



Section 35

(b) (f) (g) (h) Description of monument found at this corner and if it was accepted, state all evidence (material, testimonial, occupational, plats, records, other monuments) used as a basis for accepting. If not accepted or if nothing was found, state evidence used as basis for establishing location. If reestablished through lost corner proportionate methods, indicate all monuments, distances and directions used to establish.

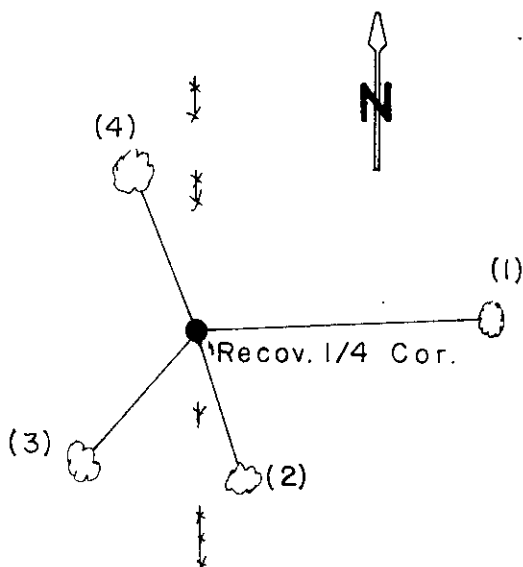
Recovered the upper portion of V.A. Maine's 6" x 6" Cedar post laying on rock cairn, also the post point within the rock cairn. Corner sets in old North-South fence line.

V.A. Maine proportioned Quarter Section Corner Survey of 1937. No evidence of any old BTs as area was burned over at time of survey.

Replaced old post point with Oneida County Monument.

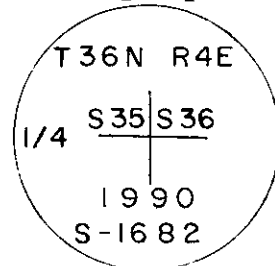
Original corner established by Edward D. Palmer, Gov't Deputy Surveyor in 1865, from which 12" Hemlock bears N14E, 28 lks. and 18" Hemlock bears S52W, 26 lks.

(c) (d) (e) Plan view of corner with ties to at least 4 witness monuments. If in disagreement with previously established corner, show the distances between the two corners and also indicate the ties to the disputed corner.



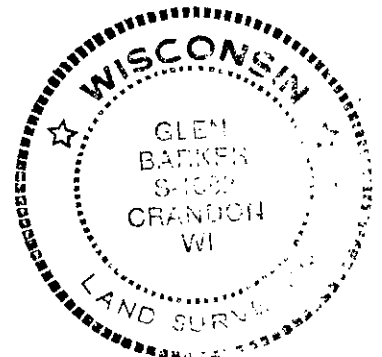
- | | | |
|-------------------------|-------|--------|
| (1) 8" Sugar Maple | N88°E | 46.46' |
| (2) 5" Twin Sugar Maple | S17°E | 24.43' |
| (3) 4" Sugar Maple | S43°W | 27.62' |
| (4) 12" White Birch | N20°W | 27.33' |

2-1/4" Alum. Oneida Co. Mon.
3-1/4" Alloy Cap



(i) I, Glen Barker
(type or print name) certify that the corner location on this record was determined by me or under my direction and control and that this U.S. Public Land Survey Monument Record is correct and complete to the best of my knowledge and belief.

Glen Barker Signature 11/4/91 Date



Index No. X-21

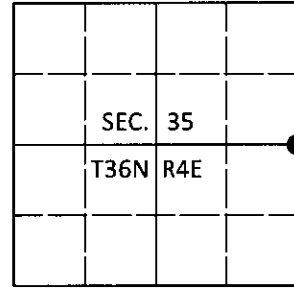
3604352000

U.S. PUBLIC LAND SURVEY MONUMENT RECORD

Note: This form is intended and designed to fulfill all requirements of Wisconsin Administrative Code, Chapter A-E 7.08 U.S. Public Land Survey Monument Record (3)(a-i).

(a) CORNER LOCATION
 1/4 Cor. of Secs. 35 & 36
 Township 36 North
 Range 4 East of the 4th P.M.
 Town of Lynne
 County of Oneida

WISCORS - Oneida County
 N: 137,462.98 USft
 E: 128,496.57 USft
 Datum: NAD 83(2011)
 GNSS Method: RTN - Direct
 GNSS Control: WISCORS VRS



(b) HISTORY OF ORIGINAL CORNER ESTABLISHMENT

Original Surveyor:

Original Accessories:

Date of Survey

Commenced:
 Completed:

See previous USPLS Monument Record

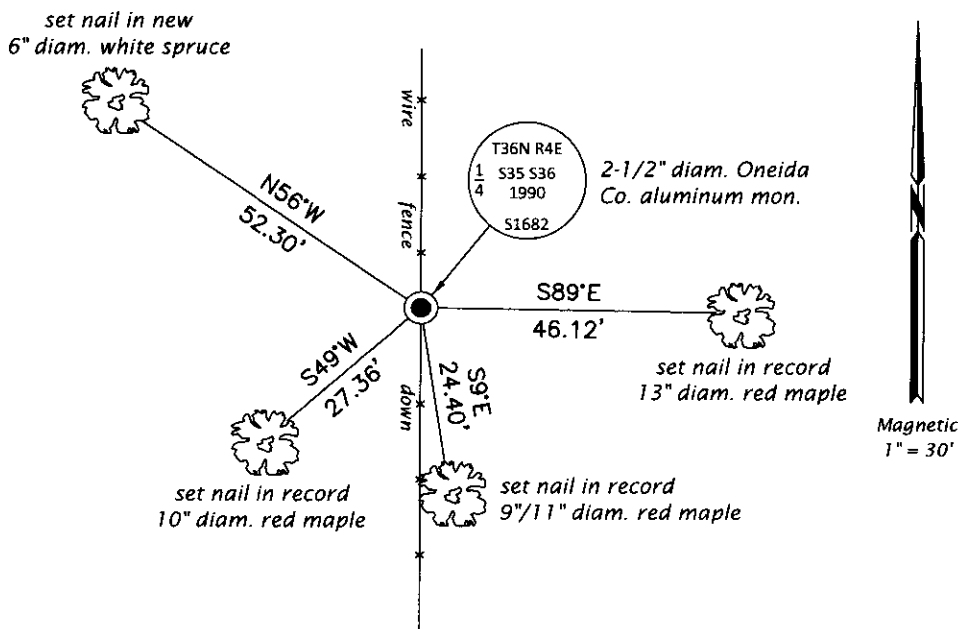
(b)(f)(g)(h) Description of monument found at this corner and if it was accepted, state all evidence (material, testimonial, occupational, plats, records, other monuments) used as a basis for accepting. If not accepted or if nothing was found, state evidence used as basis for establishing location. If re-established through lost corner proportionate methods, indicate all monuments, distances and directions used to establish. Indicate type of monument and sign post found or set.

This is a perpetuation of a previous USPLS Monument Record by Glen Barker, RLS dated November 4, 1991 and filed in the office of the Oneida County Register of Deeds. A complete history of the corner can be found on the previous monument record. I accept the previous location as a true and faithful perpetuation or reestablishment of the original corner location and further perpetuate it as follows.

September 3, 2018: I found and accepted the record monument, a 2-1/2" diam. aluminum pipe with a 3-1/4" diam. Oneida Co. aluminum cap projecting 6" above the ground surface. The cap has been gnawed by a porcupine. The record birch bearing tree is a rotted stump. I found or established accessories as shown below. I found a white vinyl sign post bearing West, 0.9 ft.

The coordinate value shown has been verified by at least one of the following methods: 1) comparison to a previously GPS determined published value; 2) the value is the average of two or more GPS observations at a markedly different time; 3) one or more distances were measured back to the GPS observed corner from temporary GPS observed offset locations.

(c)(d)(e) Plan view of corner with ties to at least 4 witness monuments. If in disagreement with previously established corner, show the distances between the two corners and also indicate the ties to the disputed.



REGISTER OF DEEDS OFFICE
 ONEIDA COUNTY
 FILED

SEP 10 2018

KYLE J. FRANSON
 REGISTER OF DEEDS

(i) I, Jeffrey W. Austin, Professional Land Surveyor No. S-1885, hereby certify that the corner location on this record was determined by me or under my direction and control and that this U.S. Public Land Survey Monument Record is correct and complete to the best of my knowledge and belief.

[Handwritten Signature]
 Signature

SEP. 5, 2018
 Date