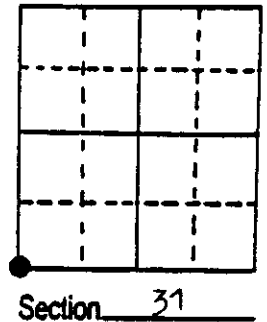


# U.S. PUBLIC LAND SURVEY MONUMENT RECORD

**Note:** This form is intended and designed to fulfill all requirements of Wisconsin Administrative Code, Chapter A-E 7.08 U.S. Public Land Survey Monument Record (3) (a) (b) (c) (d) (e) (f) (g) (h) (i). An additional sheet may be added if necessary to conform with said requirements.

(a) Corner location: Township 36 North  
 Range 5 East  
 Town/\_\_\_\_\_ of Little Rice  
 County \_\_\_\_\_ of Oneida

REGISTER OF DEEDS OFFICE  
 ONEIDA COUNTY, WIS.  
**FILED**  
 MAY 10 1990  
 At \_\_\_\_\_ O'Clock \_\_\_\_\_ M  
**THOMAS H. LEIGHTON**  
 REGISTER OF DEEDS



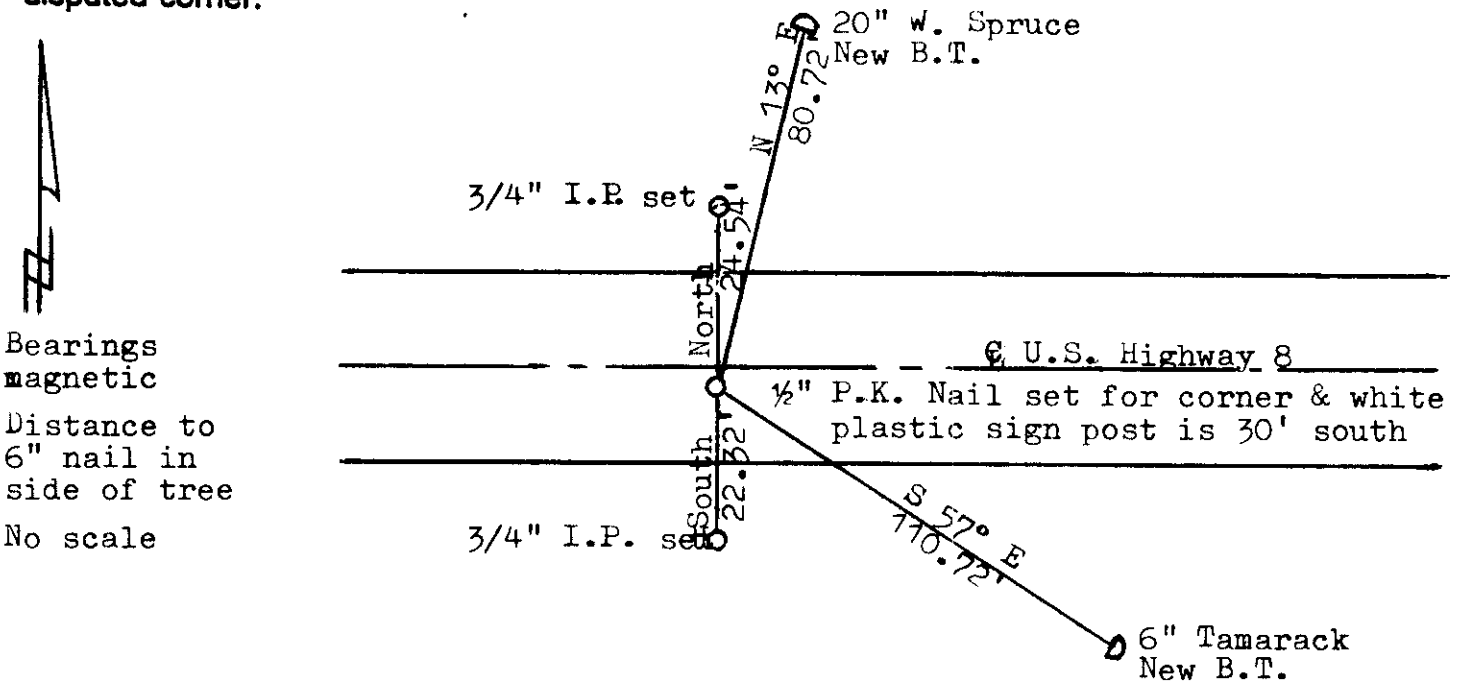
(b) (f) (g) (h) Description of monument found at this corner and if it was accepted, state all evidence (material, testimonial, occupational, plats, records, other monuments) used as a basis for accepting. If not accepted or if nothing was found, state evidence used as basis for establishing location. If reestablished through lost corner proportionate methods, indicate all monuments, distances and directions used to establish. Indicate type of monument found or set and sign post.

2 September 1860, Orig. cor. estab. by Alfred Millard West between 6 & 31....  
 78.65 Intersect Range line 340 North of Post & set post for cor. of Towns  
 35 & 36 North Range 4 & 5 E, B.T.s W. Pine 16 N 60 E 55; Tamarac 12 S 45 E  
 16; Tamarac 16 N 35 W 82 & Tamarac 10 S 89 W 85

October 1932, On route location survey for D.O.T., Township cor. is called  
 for being 4' ± south of the centre-line of the highway (U.S. Highway 8). A  
 6' x 4' x 34' concrete culvert is 118' west of this corner.

April 1990, Found no iron for corner location. With culvert 118' west and  
 very old fence lines north & south for east & west alignment and a large  
 white cross painted on concrete surface, 1.7 south of centre-line of U.S.  
 Highway 8, set 1/2" P.K. Nail in concrete surface for corner. Witnessed it as  
 shown below.

(c) (d) (e) Plan view of corner with ties to at least 4 witness monuments. If in disagreement with previously established corner, show the distances between the two corners and also indicate the ties to the disputed corner.



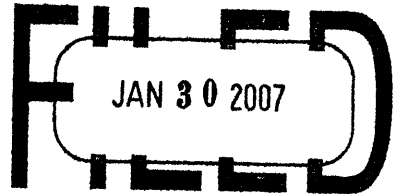
(i) I, Lester J. Schmit R.L.S. 1192  
 (type or print name) certify that the corner location on this record  
 was determined by me or under my direction and control and that  
 this U.S. Public Land Survey Monument Record is correct and  
 complete to the best of my knowledge and belief.

Lester J. Schmit 3 May 1990  
 Signature Date



Index No. \_\_\_\_\_

3604360000



At \_\_\_\_\_ O'Clock \_\_\_\_\_ M  
**THOMAS H. LEIGHTON**  
REGISTER OF DEEDS

Recorders Data

This form is intended to fulfill the requirements of Chapter A-E7.08 (3)(a) thru (i) U.S. Public Land Survey Monument Location Record, Wisconsin Administrative Code. Use the reverse side of form for continuation.

**U.S. PUBLIC LAND SURVEY MONUMENT LOCATION RECORD**

USPLS CORNER: SE SECTION: 36 TOWNSHIP: 36 NORTH RANGE: 4 EAST  
 NAME OF WATERWAY FOR M.C. CORNER : N/A SECTION LINE: N/A  
 (CITY)(VILLAGE)(TOWN) OF: LYNNE COUNTY OF: ONEIDA

Description of monument found or placed and all other evidence used as the basis for monument location; including monuments and measurements required if the corner location was reestablished by lost corner proportionate methods. Also indicate name of the original surveyor, original survey date and the corner monument, bearing trees, witness or other reference monuments established, including measured bearing and distance ties, from available survey records.

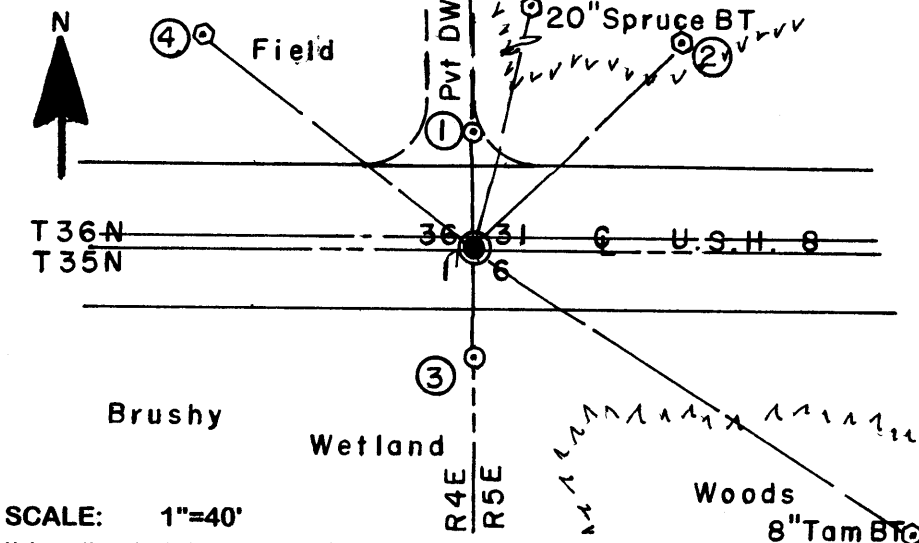
In September 1860, Alfred Millard/GLO set a wood post as original section corner and noted OBTs: 16" Pw N60°E 33 links, 12" Tamarac S45°E 16 links, 16" Tamarac N35°W 82 Links and a 12" Tamarac S89°W 85 links; all are now obliterated.

In April 1990, Lester J. Schmit/RLS 1192 set a PK spike in pavement of USH 8 using record data from 1932 survey by Wisconsin D.O.T. and evidence of an old fenceline to the North and South and noted new witnesses: a 20" Spruce N13°E 80.72'; a 6" Tamarac S57°E 110.72'; a 3/4" iron pipe set North 24.54'; and a 3/4" iron pipe set South 22.32' per his USPLS Monument Location Record dated May 3, 1990 as filed in Oneida County records.

On September 7, 2006 I found Schmits NE BT as a 20" Spruce tipped 15° East with large open face blaze & faint scribing above root crown, which I used as a corner position check only due to tree being tipped; found Schmits SE BT as an 8" Tamarac with no upper blaze marks and lower blaze partly open, which I used for corner position check only due to long tie distance; found Schmits 3/4" iron pipe North of corner location about 7" below the SE radius of a gravelled private driveway North; and also found Schmits 3/4" iron pipe South of corner location about 3" below grassy roadside slope down to South.

I could not find Schmits PK spike in pavement so I reset a 1/4" dia. by 2.5" long Mag nail into high way pavement on a right line between Schmits iron pipe witness monuments at prorated measured as/recorded as distances for new witness ties noted below. This corner rereferenced with approval of Oneida County Surveyor Michael Romportl.

Plan view map of monument location with bearing and distance ties to a minimum of four(4) described witness or reference monuments of concrete, natural stone, iron, live bearing trees or equivalent material. If applicable, also show a minimum of two(2) bearing and distance ties to any other monument found and not accepted; including the bearing and distance from the accepted monument.



**WITNESS MONUMENT TIES:**

- ① Old 3/4" dia. uncapped iron pipe found North 24.63'.
- ② New 8" Spruce N45°E 60.87' to PK/washer 58" up in right face.
- ③ Old 3/4" dia. uncapped iron pipe found South 22.41'.
- ④ New 13" Elm BT N52°W 71.80' to PK/washer 54" up in right face.

Standard white poly 'T' marker post set 32.5' South. I also set a 1/4" dia. by 2.5" long Mag nail on North & South edges of pavement on right line between #1 & #3.

SCALE: 1"=40'

Unless otherwise indicated, all bearing tree ties are to a .25" dia. by 2.5" long PK nail with a 1.25" dia. steel washer driven into unblazed right face and a .25" dia. by 2.5" long PK nail with a 2" dia. steel washer stamped BT is also driven into unblazed face of bearing tree at DBH; the basis for measured bearings is by compass to nearest degree and all tie distances are measured horizontal by steel tape corrected to nearest 1/100th feet at standard temperature of 68° F.

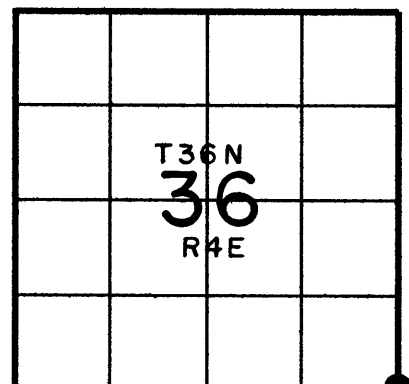
RLS SEAL:



**LAND SURVEYOR CERTIFICATE:**

I, William C. Rohde, hereby certify that I am duly licensed as a Professional Land Surveyor in the State of Wisconsin; that this USPLS monument location was determined by me and/or under my direct supervision and control; and that this U.S. Public Land Survey Monument Location Record is true and correct to the best of my knowledge and belief.

Signed: *William C. Rohde*  
William C. Rohde RLS 841



SECTION LOCATION MAP  
INDEX NO. 2 25  
3604360000