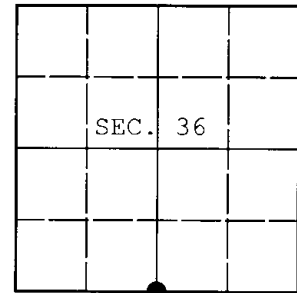


U.S. PUBLIC LAND SURVEY MONUMENT RECORD

Note: This form is intended and designed to fulfill all requirements of Wisconsin Administrative Code, Chapter A-E 7.08 U.S. Public Land Survey Monument Record (3) (a) (b) (c) (d) (e) (f) (g) (h) (i). An additional sheet may be added if necessary to conform with said requirements.

(a) CORNER LOCATION: WISCRS - Oneida County
1/4 Cor. of Secs. 1 & 36 N: 134,795.60 USft
Township 35 & 36 North E: 131,174.01 USft
Range 4 East of the 4th P.M. Datum: NAD 1983(2011)
Town of Lynne County of Oneida



(b) HISTORY OF ORIGINAL CORNER ESTABLISHMENT

Original Surveyor: Original Accessories:
Date of Survey: Commenced:
Completed:

(b) (f) (g) (h) Description of monument found at this corner and if it was accepted, state all evidence (material, testimonial, occupational, plats, records, other monuments) used as a basis for accepting. If not accepted or if nothing was found, state evidence used as basis for establishing location. If re-established through lost corner proportionate methods, indicate all monuments, distances and directions used to establish. Indicate type of monument and sign post found or set.

NOTE: This is a perpetuation of a previous USPLS Monument Record by Darren B. Krzanowski, RLS dated December 14, 2012 and filed in the office of the Oneida County Register of Deeds. A complete history of the corner can be found on the previous monument record. I accept the previous location as a true and faithful perpetuation or reestablishment of the original corner location and further perpetuate it as follows.

April 3, 2016: I found and accepted the record monument, a Berntsen "Survey Mark" nail in the centerline of U.S. Highway 8. The existing accessories were found in substantial agreement with the record and were not remeasured as the sole purpose of this work is to report the coordinates of the corner point.

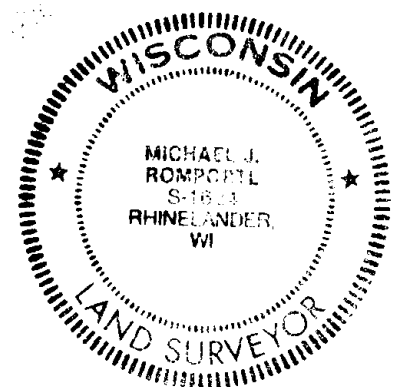
The coordinates shown were derived from two independent RTK observations of the corner point and are referenced to the WISCRS GNSS Network.

(c) (d) (e) Plan view of corner with ties to at least 4 witness monuments. If in disagreement with previously established corner, show the distances between the two corners and also indicate the ties to the disputed.

REGISTER OF DEEDS OFFICE
ONEIDA COUNTY
FILED

DEC 28 2016

AT _____ O'CLOCK _____ M
KYLE J. FRANSON
REGISTER OF DEEDS



(i) I, Michael J. Romportl, Professional Land Surveyor No. S-1624, hereby certify that the corner location on this record was determined by me or under my direction and control and that this U.S. Public Land Survey Monument Record is correct and complete to the best of my knowledge and belief.

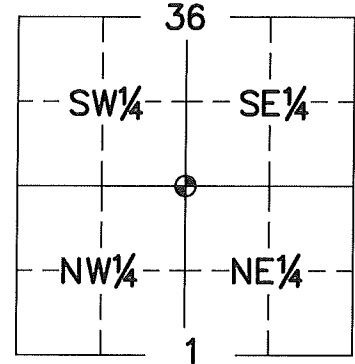
Michael J. Romportl 12/23/2016
Signature Date

U.S. PUBLIC LAND SURVEY MONUMENT RECORD ONEIDA COUNTY, WISCONSIN.

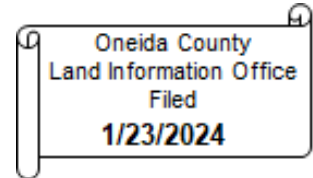
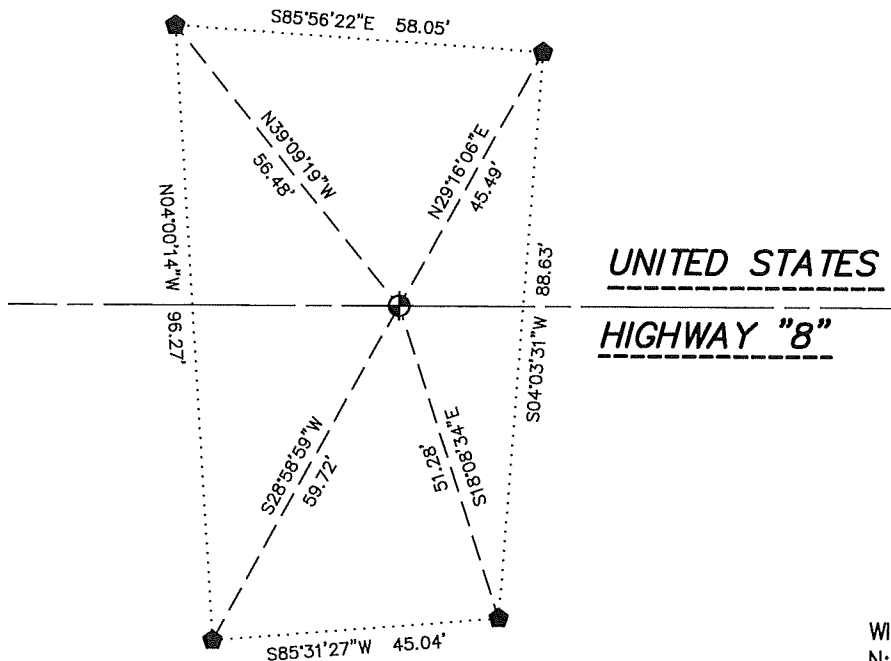
in accordance with Wisconsin Administrative Code, Chapter A-E 7.08 (3) (a)-(i) SIDE 1 OF 2

LOCATION (a) The identity of the corner, as referenced to the U.S. Public Land Survey System.

SECTION 36 - TOWN 36 NORTH - RANGE 4 EAST
 TOWNSHIP OF _____
 LYNNE
 TYPE OF CORNER _____ SOUTH 1/4 CORNER
 TYPE OF MONUMENT _____ 1" OUTSIDE DIAMETER SURVEY NAIL
 PLSS IDENTIFIER NUMBER _____ 3604360020
 NORTHING _____ 134795.6000'
 EASTING _____ 131174.0100'



PLAN VIEW (c) Reference to at least 4 witness monuments. Witness monuments shall be concrete, natural stone, iron, bearing trees or other equally durable material, except wood other than bearing trees; (d) A plan view drawing depicting the relevant monuments and reference ties which is sufficient in detail to enable accurate relocation of the corner monument if the corner monument is disturbed; (e) A description of any material discrepancy between the location of the corner as restored or reestablished and the location of that corner as previously restored or reestablished;



UNITED STATES
HIGHWAY "8"

LEGEND

- SET 1" OUTSIDE DIAMETER SURVEY NAIL
- FOUND ALUMINUM MONUMENT

WISCORS - ONEIDA COUNTY
 N: 134795.6000'
 E: 131174.0100'
 DATUM; NAD83 (2011)
 GNSS METHOD RTN - DIRECT
 GNSS CONTROL WISCORS VRS
 BEARING ORIENTATION:
 ONEIDA COUNTY GRID BEARINGS
 ROUNDED TO THE NEAREST 1 MINUTE
 HORIZONTAL SCALE: 1" = 30 FEET ±

RECOVERY PROCEDURES

(f) Whether the corner was restored through acceptance of an obliterated evidence location or a found perpetuated location;

LOCATION WAS PERPETUATED BY COUNTY COORDINATES AND FOUND SURVEY MARK NAIL FROM FIELD OBSERVATION, BY NATHAN S. FLAGSTAD, APRIL 19, 2023.

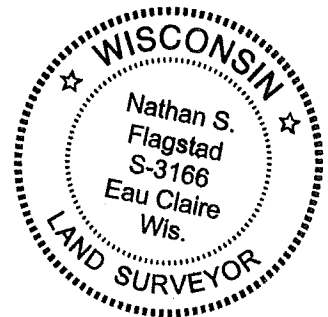
MICHEL J. ROMPORTL; DECEMBER, 2016:

THIS IS A PERPETUATION OF A PREVIOUS USPLS MONUMENT RECORD BY DARREN B. KRZANOWSKI, DATED DECEMBER 14, 2012 AND FILED IN THE OFFICE OF THE ONEIDA COUNTY REGISTER OF DEEDS. A COMPLETE HISTORY OF THE CORNER CAN BE FOUND ON THE PREVIOUS MONUMENT RECORD. I ACCEPT THE PREVIOUS LOCATION AS A TRUE AND FAITHFUL PERPETUATION OR REESTABLISHMENT OF THE ORIGINAL CORNER LOCATION AND FURTHER PERPETUATE IT AS FOLLOWS.

FOUND AND ACCEPTED A BERNSTEN "SURVEY MARK" NAIL IN THE CENTERLINE OF UNITED STATES HIGHWAY "8". THE EXISTING ACCESSORIES WERE FOUND IN SUBSTANTIAL AGREEMENT WITH THE RECORD AND WERE NOT REMEASURED AS THE SOLE PURPOSE OF THIS WORK IS TO REPORT THE COORDINATES OF THE CORNER POST

NATHAN S. FLAGSTAD; NOVEMBER 2023:

SURVEY NAIL LIKELY DESTROYED DUE TO ROAD CONSTRUCTION OF UNITED STATES HIGHWAY "8". SET 1" OUTSIDE DIAMETER SURVEY NAIL IN ASPHALT AT COUNTY COORDINATE POSITION. FOUR TIE MONUMENTS ARE FROM PREVIOUS TIE SHEET. NEW MEASUREMENTS ARE AS SHOWN.



SURVEYOR'S CERTIFICATE

Chapter 7.08 (3) (i)

I, NATHAN S. FLAGSTAD, HEREBY CERTIFY THAT THE U.S. PUBLIC LAND SURVEY MONUMENT RECORD SHOWN WAS DETERMINED BY ME OR UNDER MY DIRECTION AND IS CORRECT AND COMPLETE TO THE BEST OF MY KNOWLEDGE AND BELIEF.

1/22/2024

NATHAN S. FLAGSTAD
WISCONSIN PROFESSIONAL LAND SURVEYOR S-3166

DATE

Real Land Surveying
1356 International Drive
Eau Claire, WI 54701

715-514-4116