

U.S. PUBLIC LAND SURVEY MONUMENT RECORD

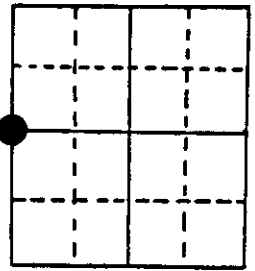
Note: This form is intended and designed to fulfill all requirements of Wisconsin Administrative Code, Chapter A-E 5.02, U.S. Public Land Survey Monument Record (3) (a) (b) (c) (d) (e) (f) (g) (h) (i). An additional sheet may be added if necessary to conform with said requirements.

(a) Corner location: Township 36 North
 Range 6 East ~~West~~

Town/City/Village Nokomis

County Oneida

ONEIDA COUNTY, WIS.
 Received for Record the 13th
 day of March A.D. 1987
 at 10 o'clock A.M. and Recorded in
 Vol. of RECORDS on page.....
Don Kragge Kuehn
 REGISTER OF DEEDS



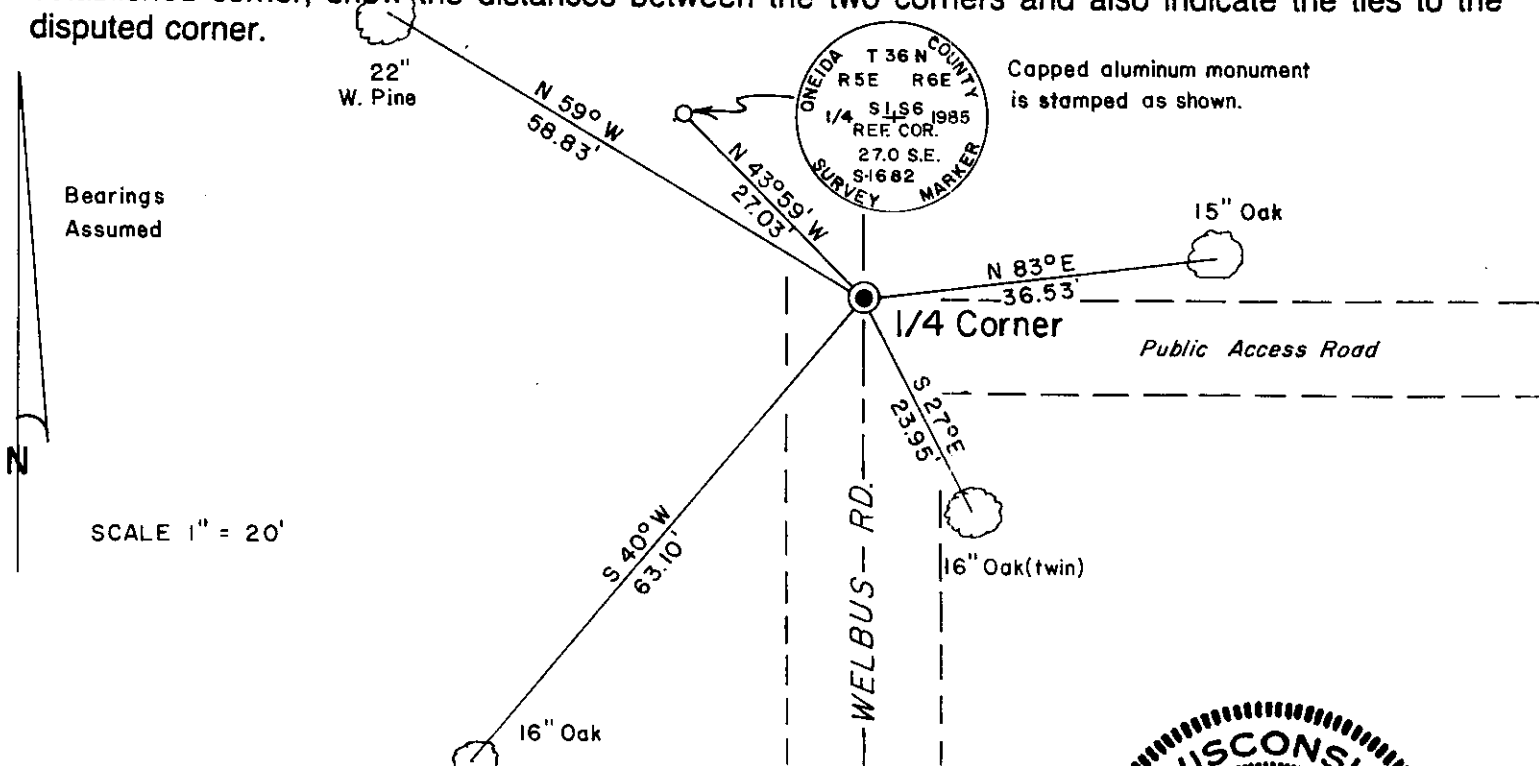
Section 6

(b) (f) (g) (h) Description of monument found at this corner and if it was accepted, state all evidence (material, testimonial, occupational, plats, records, other monuments) used as a basis for accepting. If not accepted or if nothing was found, state evidence used as basis for establishing location. If reestablished through lost corner proportionate methods, indicate all monuments, distances and directions used to establish.

September 1860-Alfred Millard - Deputy Surveyor-Set 1/4 Section Post. Bearing trees:
 Y. Pine 10", S89°E, 39 links and Y. Pine 11", N37°E, 36 links.
 July 5, 1932-H. C. Hall, Surveyor-Set 1 1/2" x 36" Iron pipe for 1/4 corner. Made B.T.'s
 Forked B. Oak 12", S28°E, .363 ch. and B. Oak 8", S39°W, .95 ch.
 February 4, 1987-James D. Rein, Surveyor-Found 1" dia. Iron pipe set in concrete 6"
 below center line of Welbus Road. Found Hall's 2 bearing trees, 2 other
 existing bearing trees, and an Oneida County capped aluminum reference monument,
 set by Glen Barker, RLS #1682 in 1985.

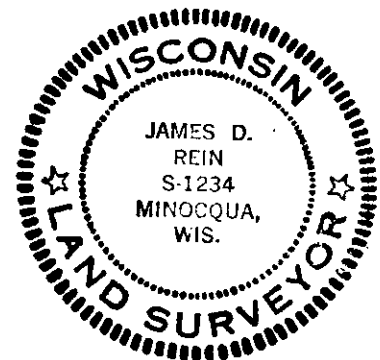
Note: Distances to bearing trees were measured to nails in center of root crown on side of tree.

(c) (d) (e) Plan view of corner with ties to at least 4 witness monuments. If in disagreement with previously established corner, show the distances between the two corners and also indicate the ties to the disputed corner.



(i) I, James D. Rein, Registered Land Surveyor No. S-1234
 (type or print name) certify that the corner location on this record was determined by me or under my direction and control and that this U.S. Public Land Survey Monument Record is correct and complete to the best of my knowledge and belief.

James D. Rein
 Signature 2/07/87
Date



Index No. 6-1

3605012000