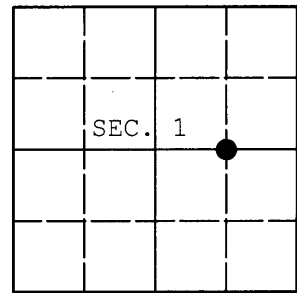


**U.S. PUBLIC LAND SURVEY MONUMENT RECORD**

Note: This form is intended and designed to fulfill all requirements of Wisconsin Administrative Code, Chapter A-E 7.08 U.S. Public Land Survey Monument Record (3) (a) (b) (c) (d) (e) (f) (g) (h) (i). An additional sheet may be added if necessary to conform with said requirements.

(a) CORNER LOCATION: WISCRS - Oneida County  
 C-E 1/16 Cor. of Sec. 1 N: 163,894.61 USft  
 Township 36 North E: 164,368.49 USft  
 Range 5 East of the 4th P.M. Datum: NAD 1983(2011)  
 Town of Little Rice County of Oneida



(b) HISTORY OF ORIGINAL CORNER ESTABLISHMENT

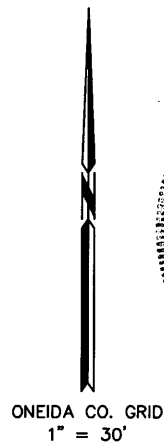
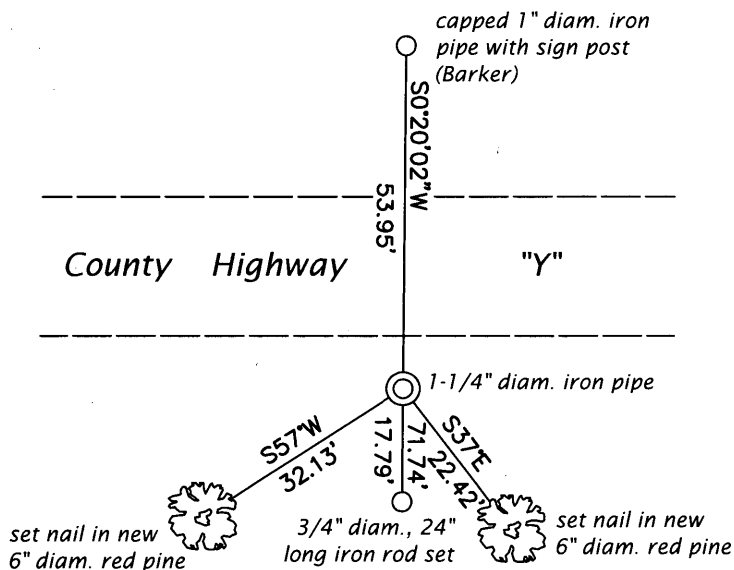
Original Surveyor: Original Accessories:  
 Date of Survey: Commenced:  
 Completed:

(b) (f) (g) (h) Description of monument found at this corner and if it was accepted, state all evidence (material, testimonial, occupational, plats, records, other monuments) used as a basis for accepting. If not accepted or if nothing was found, state evidence used as basis for establishing location. If re-established through lost corner proportionate methods, indicate all monuments, distances and directions used to establish. Indicate type of monument and sign post found or set.

July 25, 2014: Prior to road construction, I found and accepted Glen Barker's 1-1/4" diam. iron pipe as described on survey map no. B-3024. The monument is 19 ft. South of the centerline of County Highway Y. I performed a GPS observation referenced to the WISCORS GNSS Network. I found or established accessories as shown below.

July 26, 2015: Following road construction, I returned and found the record monument undisturbed. I performed a second GPS observation referenced to the WISCORS GNSS Network. The coordinates shown are the mean of the two observations that differed by 0.12 ft.

(c) (d) (e) Plan view of corner with ties to at least 4 witness monuments. If in disagreement with previously established corner, show the distances between the two corners and also indicate the ties to the disputed.



REGISTER OF DEEDS OFFICE  
 ONEIDA COUNTY  
 FILED

SEP 10 2015

AT \_\_\_\_\_ O'CLOCK \_\_\_\_\_ M  
 KYLE J. FRANSON  
 REGISTER OF DEEDS

(i) I, Jeffrey W. Austin, Professional Land Surveyor No. S-1885, hereby certify that the corner location on this record was determined by me or under my direction and control and that this U.S. Public Land Survey Monument Record is correct and complete to the best of my knowledge and belief.

Signature

SEP. 2, 2015

Date

3605012010 (INDEX NO. C-24)