

CERTIFIED U.S. PUBLIC LAND SURVEY MONUMENT RECORD

INSTRUCTIONS: THIS RECORD SHALL SHOW THE LOCATION OF THE CORNER AND SHALL INCLUDE ALL OF THE FOLLOWING ELEMENTS (A-I)

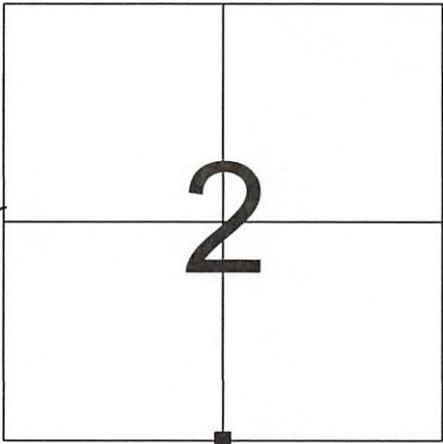
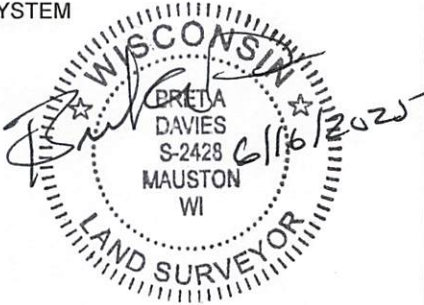
(A) IDENTIFY THE CORNER BY REFERENCE TO THE U.S. PUBLIC LAND SURVEY SYSTEM

■ = CORNER MONUMENT LOCATED

WITNESSES TO CORNER LOCATION:

- 1) JOSH MURPHY
- 2) BRET DAVIES

ONEIDA COUNTY COORDINATES NAD 83(2011)
NORTHING: 161242.67
EASTING: 157675.63



SECTION 2, TOWN 36 NORTH, RANGE 5 EAST

(B) DESCRIBE ANY RECORD EVIDENCE, MONUMENT EVIDENCE, OCCUPATIONAL EVIDENCE, TESTIMONIAL EVIDENCE OR ANY OTHER MATERIAL EVIDENCE YOU CONSIDERED, AND WHETHER THE MONUMENT WAS FOUND OR PLACED.

RECOVERED A 2-1/2" O.D., IRON PIPE WITH BRASS CAP, SET BY WISCONSIN CONSERVATION DEPARTMENT IN 1940. THE LOCATION FIT WELL WITH THE SOUTHEAST CORNER AND SOUTHWEST CORNER OF THE SECTION. ACCEPTED THIS AS THE TRUE CORNER. SET NEW TIES AS SHOWN BELOW

(C) IN THE PLAN VIEW DRAWING BELOW, PROVIDE REFERENCE TIES TO AT LEAST 4 WITNESS MONUMENTS OR, IF THE LOCATION IS WITHIN A MUNICIPALITY, TO AT LEAST 2 WITNESS MONUMENTS. (WITNESS MONUMENTS SHALL BE MADE

(D) SHOW A PLAN VIEW DRAWING, DEPICTING THE RELEVANT MONUMENTS AND REFERENCE TIES, WHICH IS SUFFICIENTLY DETAILED TO ENABLE ACCURATE RELOCATION OF THE CORNER MONUMENT IF IT IS DISTURBED.

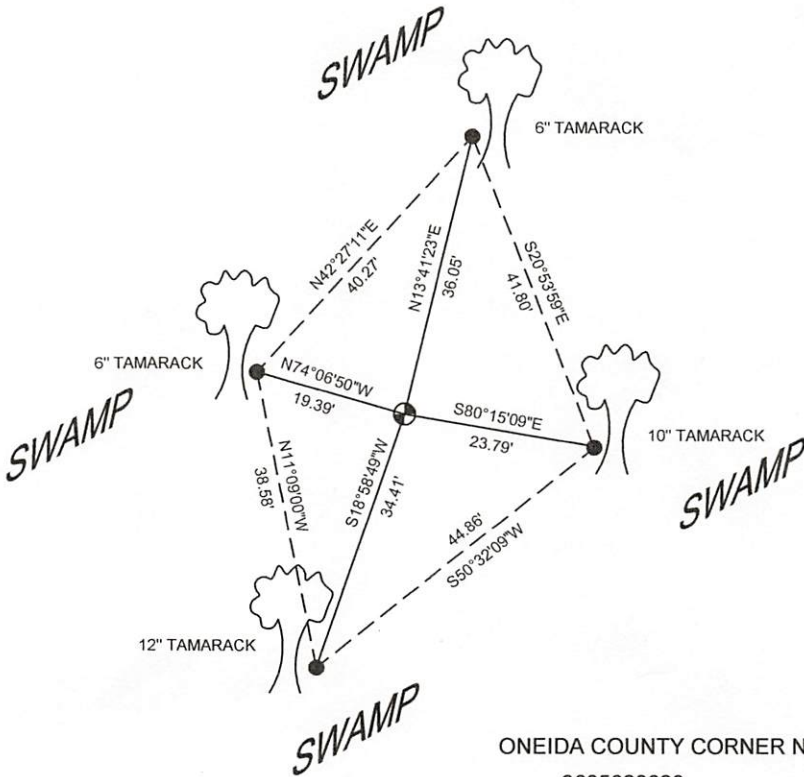


BEARINGS SHOWN UPON THIS TIE SHEET ARE REFERENCED TO THE WISCONSIN COORDINATE REFERENCE SYSTEMS (WISCRS) FOR ONEIDA COUNTY, WISCONSIN. NAD 83(2011)



LEGEND

- 3/4" X 24" REBAR SET WEIGHING 1.50 LBS./ LIN. FT.
- ⊕ 2 1/2" BRASS CAPPED IRON PIPE FOUND



ONEIDA COUNTY CORNER NO.
3605020020