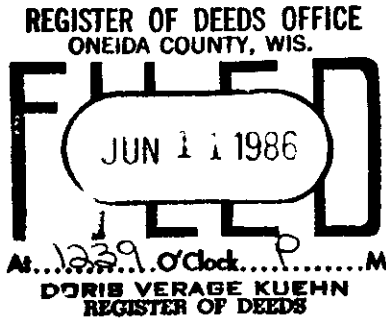
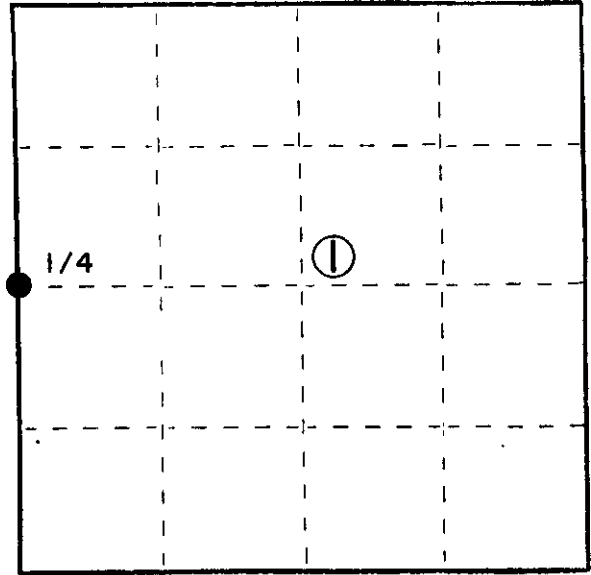


U. S. PUBLIC LAND SURVEY MONUMENT RECORD

INSTRUCTIONS: This record shall show the location of the corner and shall include all of the following nine elements (a through i).

- (a) Identify the corner by reference to the U.S. public land survey system.
 ○ = Corner monument restored.

T 36N
R 5E

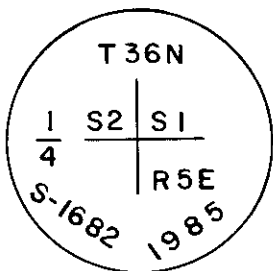
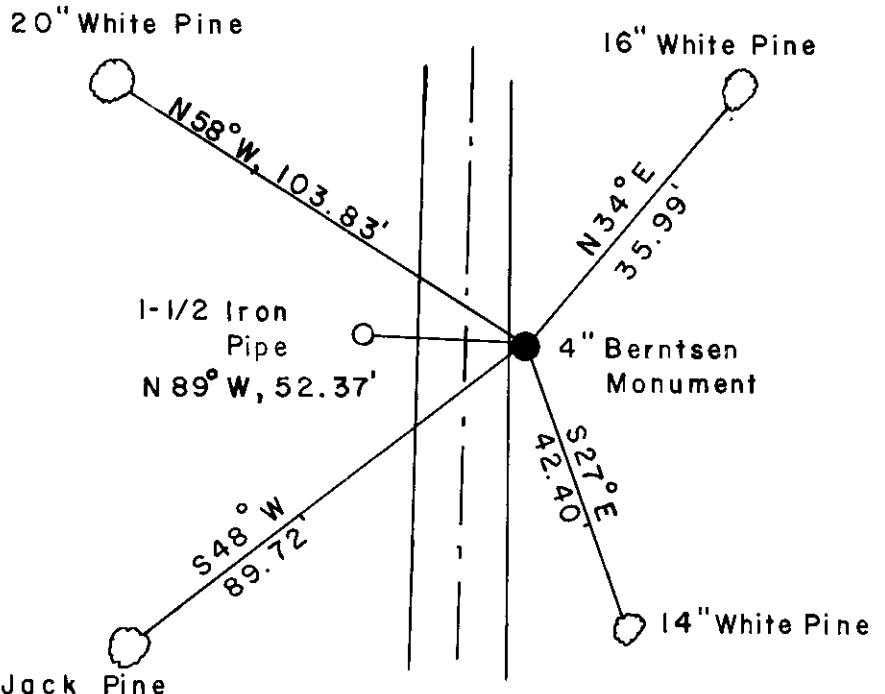


- (b) Describe any record evidence, monument evidence, occupational evidence, testimonial evidence or any other material evidence you considered, and whether the monument was found or placed.

In 1960 Owens-Illinois, Inc. chained north along Burrow's Lake Road, from SW corner of Section 1 to 1/4 corner between Sections 1 & 2. Corner fell at 40 chains. 1/4 corner was an iron pipe in center of logging road, and in the east ditch of Burrow's Lake Road. At 20 chains they established S 1/16 between Sections 1 & 2, set an iron pipe in centerline of Burrow's Lake Road. Road construction has destroyed iron pipe at 1/4 corner position. Ran from SW corner of Section 1 to S 1/16 between Sections 1 & 2 for a distance of 1319.15'. On same alignment re-established 1/4 corner 1319.15' of S 1/16 and 2638.30' of section corner 1-2-11-12.

- (c) In the plan view drawing below, provide reference ties to at least 4 witness monuments, or, if the location is within a municipality, to at least 2 witness monuments. (Witness monuments shall be made of concrete, natural stone, iron or other equally durable material.)
 Describe witness monuments.

- (d) Show a plan view drawing depicting the relevant monuments and reference ties which is sufficient in detail to enable accurate relocation of the corner monument if the corner monument is disturbed. Indicate north.



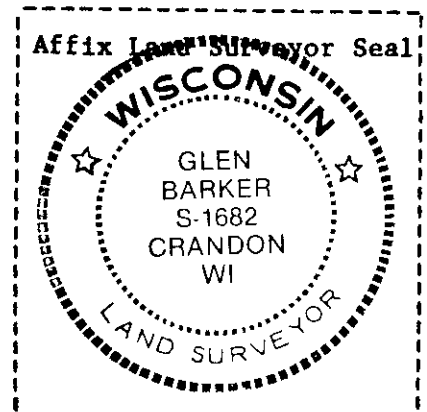
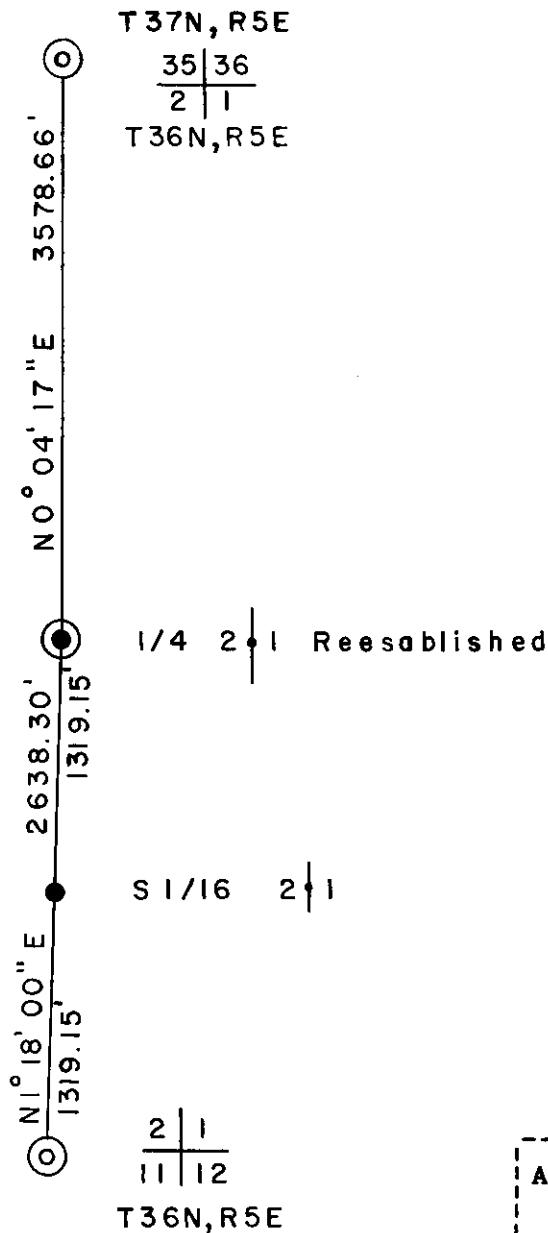
C-21

(e) Describe any material discrepancy between the location of the corner as restored or reestablished and the location of that corner as previously restored or reestablished by distance and direction. Show the discrepancy on the plan view drawing under (d), above. Show the distances between the corner as previously restored or reestablished and (1) the corner as restored or reestablished, and (2) to at least 2 of the witness monuments shown on the drawing in (d), above.

(f) Was the corner restored through acceptance of (1) an obliterated evidence location, or, (2) a found perpetuated location?

Re-established by retracement

(g&h) Was the corner reestablished through lost corner proportionate methods? If so, show the method, including the directions and distances to other public land survey corners used as evidence or used for proportioning in determining the corner location?



Glen Barker

(i) I, Glen Barker (type or print name) certify that the corner location shown on this record was determined by me or under my direction and control and that this U.S. Public Land Survey Monument Record is correct and complete to the best of my knowledge and belief.

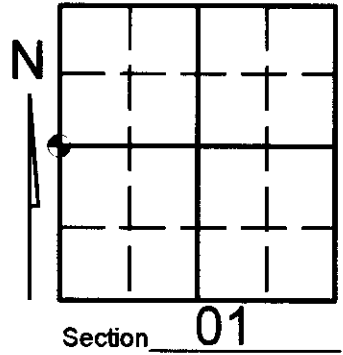
Glen Barker
Signature

11/2/85
Date

U.S. PUBLIC LAND SURVEY MONUMENT RECORD

Note: This form is intended and designed to fulfill all requirements of Wisconsin Administrative Code, Chapter A-E 7.08 U.S. Public Land Survey Monument Record (3)(a)(b)(c)(d)(e)(f)(g)(h)(i). An additional sheet may be added if necessary to conform with said requirements.

(a) Corner location: Township 36 North
 Range 05 East West
 Town/City/Village LITTLE RICE
 County ONEIDA



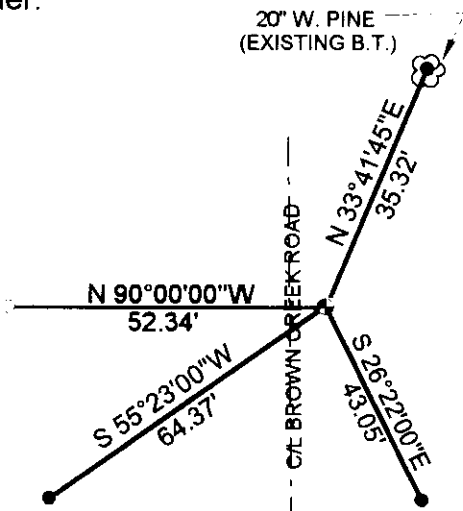
(b) (f) (g) (h) Description of monument found at this corner and if it was accepted, state all evidence (material, testimonial, occupational, plats, records, other monuments) used as a basis for accepting. If not accepted or if nothing was found, state evidence used as basis for establishing location. If reestablished through lost corner proportionate methods, indicate all monuments, distances and directions used to establish. Indicate type of monument found or set and sign post.

NOTE: This corner was referenced out in advance of road construction as an act of preserving survey evidence. This corner has not been tested for its accuracy during the course of this preservation and it is recommended that the corner be evaluated for its validity by those using it.

-Found 4" break off monument as shown on county survey file B3024 and corner restoration sheet number C-21 by Glenn Barker dated 11/12/85.

Referenced out the monument before road construction and went back and checked references and referenced the monument as shown below.

(c) (d) (e) Plan view of corner with ties to at least 4 witness monuments. If in disagreement with previously established corner, show the distances between the two corners and also indicate the ties to the disputed corner.



- LEGEND**
- SET 1" X 24" IRON PIPE
 - ✿ EXISTING BERNTSEN MONUMENT (NOT DISTURBED)
 - EXISTING 1 1/4" IRON PIPE

NOTE: SET WHITE PLASTIC SIGN POST 9' EAST OF MONUMENT

(i) I, KEVIN P. BIXBY

(type or print name) certify that the corner location on this record was determined by me or under my direction and control and that this U.S. Public Land Survey Monument Record is correct and complete to the best of my knowledge and belief.



Index No. C 21

Kevin P. Bixby
 Signature 02/13/01
 Date

3605022000
 Stamp