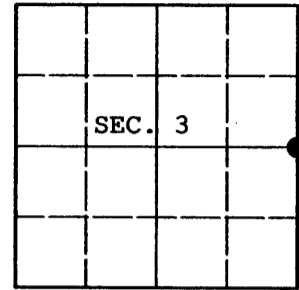


U.S. PUBLIC LAND SURVEY MONUMENT RECORD

Note: This form is intended and designed to fulfill all requirements of Wisconsin Administrative Code, Chapter A-E 7.08 U.S. Public Land Survey Monument Record (3) (a) (b) (c) (d) (e) (f) (g) (h) (i). An additional sheet may be added if necessary to conform with said requirements.

(a) CORNER LOCATION: Plane Coordinates
 1/4 Cor. of Secs. 2 & 3 X:
 Township 36 North Y:
 Range 5 East of the 4th P.M. Datum:
 Town of Little Rice County of Oneida



(b) HISTORY OF ORIGINAL CORNER ESTABLISHMENT

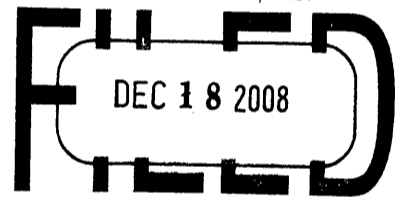
Original Surveyor: Joseph Jenkins Original Accessories:
 Date of Survey: Commenced June 1, 1863 Aspen 12" N.12°W., 17 lks.
 Completed June 10, 1863 Aspen 14" S.83°E., 12 lks.

(b) (f) (g) (h) Description of monument found at this corner and if it was accepted, state all evidence (material, testimonial, occupational, plats, records, other monuments) used as a basis for accepting. If not accepted or if nothing was found, state evidence used as basis for establishing location. If re-established through lost corner proportionate methods, indicate all monuments, distances and directions used to establish. Indicate type of monument and sign post found or set.

Aug. 1967 - Jan. 1968: Map number C-1962 by Robert Ilg, RLS indicates corner is marked by a 2" BCIP and witnessed by: 9" AQ 249°, 30.4 lks. and 10" AQ 351°, 72.9 lks.

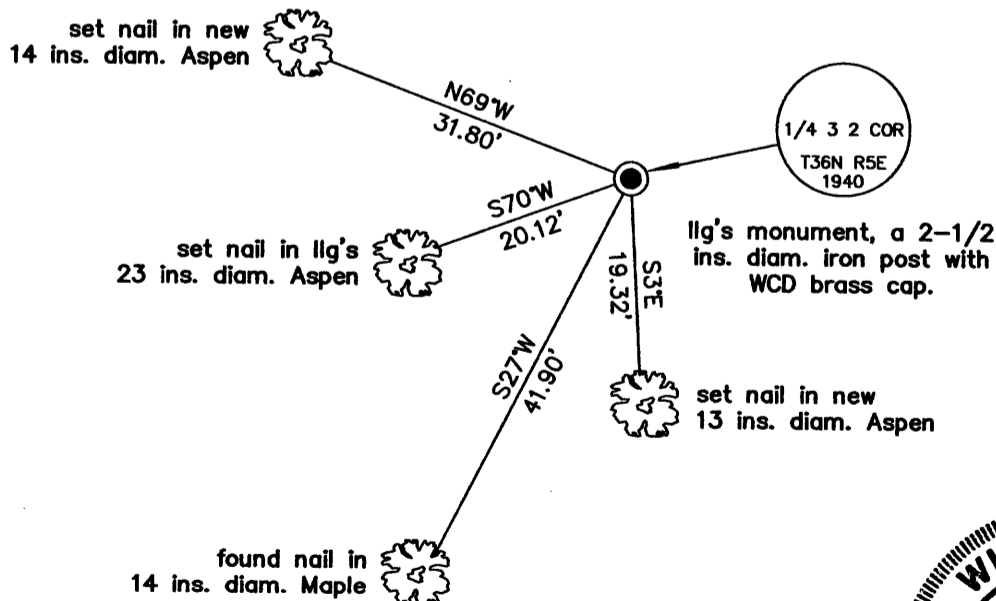
July 10, 2008: I found and accepted Ilg's monument, an iron post, 2-1/2 ins. diam. with WCD brass cap projecting 18 ins. above the ground surface. I established accessories as shown below and found a white plastic sign post bearing North, 1 ft. dist.

REGISTER OF DEEDS OFFICE
 ONEIDA COUNTY, WIS.



At _____ O'Clock _____ M
THOMAS H. LEIGHTON
 REGISTER OF DEEDS

(c) (d) (e) Plan view of corner with ties to at least 4 witness monuments. If in disagreement with previously established corner, show the distances between the two corners and also indicate the ties to the disputed.



(i) I, Jeffrey W. Austin, Registered Land Surveyor No. S-1885, hereby certify upon honor that the corner location on this record was determined by me or under my direction and control and that this U.S. Public Land Survey Monument Record is correct and complete to the best of my knowledge and belief.

Signature _____ Date DEC. 12, 2008



INDEX NO. C-17 (3605032000)