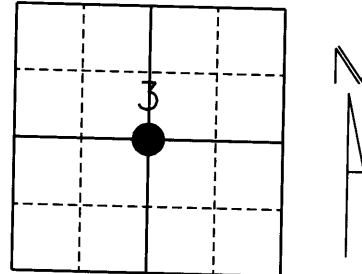


# U.S. PUBLIC LAND SURVEY MONUMENT RECORD

Note: This form is intended and designed to fulfill all requirements of Wisconsin Administrative Code, Chapter A-E 5.02, U.S. Public Land Survey Monument Record (3) (a) (b) (c) (d) (e) (f) (g) (h) (i). An additional sheet may be added if necessary to conform with said requirements.

(a) Corner location: Township 36 North  
 Range 5 East  
 Town/City/Village Little Rice  
 County Oneida



Section 3

(b) (f) (g) (h) Description of monument found at this corner and if it was accepted, state all evidence (material, testimonial, occupational, plats, records, other monuments) used as a basis for accepting. If not accepted or if nothing was found, state evidence used as a basis for establishing location. If reestablished through lost corner proportionate methods, indicate all monuments, distances and directions used to establish.

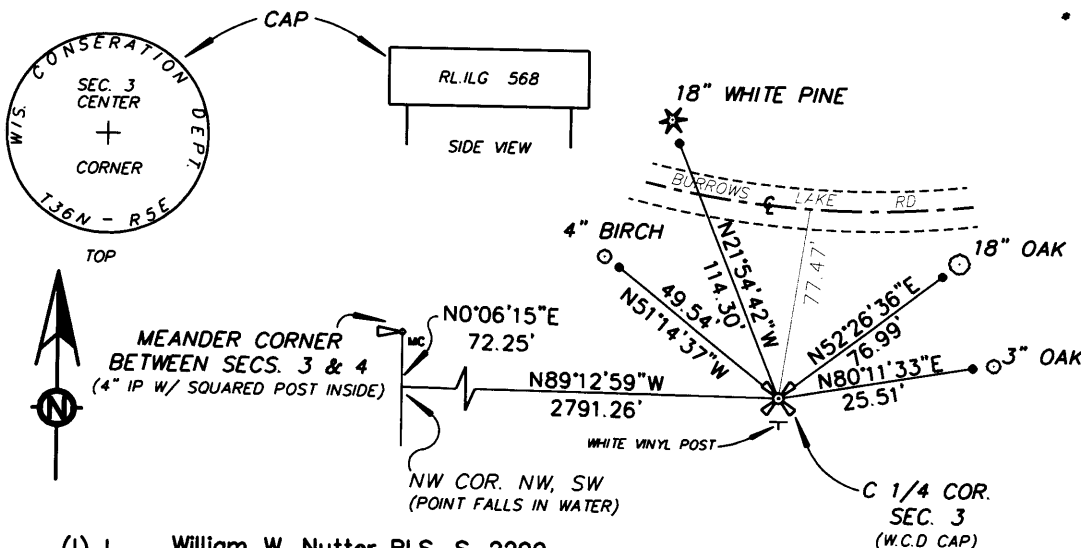
History of original corner establishment:

Original Gov't Survey was performed by the Wisconsin Conservation Department September, 1970. Corner is a 2" Bass Capped Iron Pipe.

Description of corner evidence found:

We located a 2" Iron Pipe with a Wis. Conservation Dept. Brass Cap. We accepted this position and tied to 3/4" Iron Rebar.

(c) (d) (e) Plan view of corner with ties to at least 4 witness monuments. If in disagreement with previously established corner, show the distances between the two corners and also indicate the ties to the disputed corner.



\* NOTE: Drawing is not to scale. All ties are to 3/4" Rebar approximately 1 foot away.



(i) I, William W. Nutter RLS, S-2299  
 (type or print name) certify that the corner location on this record was determined by me or under my direction and control and that this U.S. Public Land Survey Monument Record is correct and complete to the best of my knowledge and belief.

William W. Nutter, S-2299

Signature

2-17-2003

Date

Index No. C15