

CERTIFIED LAND CORNER RESTORATION

State of Wisconsin }  
County of Oneida } ss.

I John H. Fisher, do hereby certify that on the 18th day of May, 1981, I found evidence of the southeast corner of Section 4 Township 36N, Range 5E, Fourth Principal Meridian, as described hereon; and that from this evidence I established a new monument and accessories as described hereon to perpetuate the original location of this corner:

Description of original monument and accessories and subsequent restorations:

The original Gov't. survey was performed by Joseph H. Jenkins, Deputy Surveyor in June 1, 1863.

Set wood post

10" Hemlock N40°W, 20 links  
10"Hemlock N58°E, 19 links

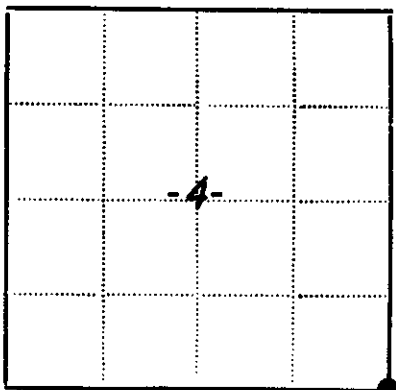
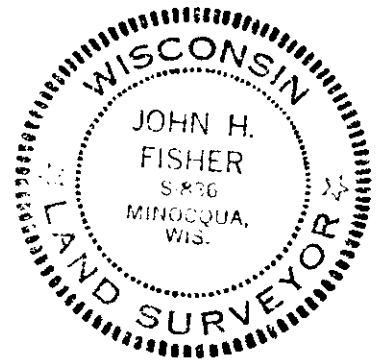
Description of corner evidence found:

W.C.D. iron pipe with brass cap (1940)

12" Norway Pine N33°E, 71.5 feet  
8" White Birch Stub S39°E, 22.6 feet

Description of monument and accessories I established to perpetuate the location of this corner:

None



● - Corner monument restored  
□ -

Resident witnesses.....

Dated at Minocqua Wisconsin, this 31 day of July 1981...

Signature John H. Fisher Title Registered Land Surveyor  
(County Surveyor, Registered Land Surveyor, or other duly authorized official)

Surveyors Registration No. S-836

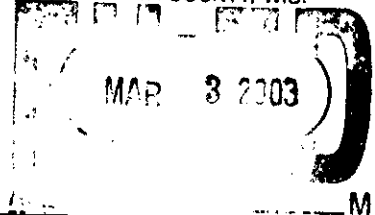
Office of REGISTER OF DEEDS County of Oneida

I hereby certify that the within instrument was filed in this office for record on the 17th day of September 1982, and was filed in Book No. \_\_\_\_\_ Page No. \_\_\_\_\_ of County Records.

Signature Doris Verage Kuehn Title REGISTER OF DEEDS

Township \_\_\_\_\_, Range \_\_\_\_\_, Section \_\_\_\_\_, Index No. \_\_\_\_\_, Page No. \_\_\_\_\_

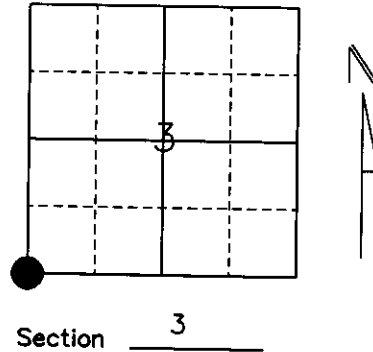
E-13



# U.S. PUBLIC LAND SURVEY MONUMENT RECORD

Note: This form is intended and designed to fulfill all requirements of Wisconsin Administrative Code, Chapter A-E 5.02, U.S. Public Land Survey Monument Record (3) (a) (b) (c) (d) (e) (f) (g) (h) (i). An additional sheet may be added if necessary to conform with said requirements.

(a) Corner location: Township 36 North  
Range 5 East  
Town/City/Village Little Rice  
County Oneida



(b) (f) (g) (h) Description of monument found at this corner and if it was accepted, state all evidence (material, testimonial, occupational, plats, records, other monuments) used as a basis for accepting. If not accepted or if nothing was found, state evidence used as a basis for establishing location. If reestablished through lost corner proportionate methods, indicate all monuments, distances and directions used to establish.

*History of original corner establishment:*

Original Gov't Survey was performed by Joseph H. Jenkins, Deputy Surveyor in June 1, 1863.  
Original corner was a wood post with bearing trees:  
10" Hemlock N40°W, 20 links  
10" Hemlock N58°E, 19 links

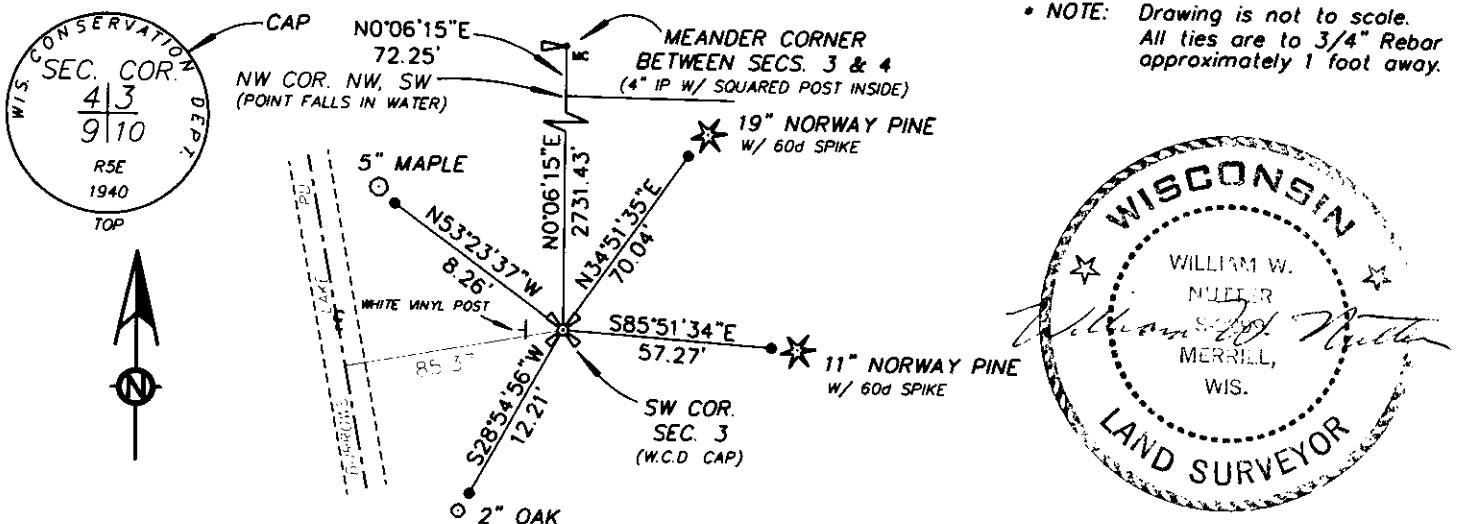
Revisited in 1940, where a Wisconsin Conservation Department Iron Pipe with Brass Cap Monument was placed with bearing trees:  
12" Norway Pine N33°E, 71.5 feet  
8" White Birch Stub S39°E, 22.6 feet

Revisited again May 18, 1981 by John H. Fisher.

*Description of corner evidence found:*

We located a 2" Pipe with a Wis. Conservation Dept. Brass Cap. We accepted this position and tied to 3/4" Rebar.

(c) (d) (e) Plan view of corner with ties to at least 4 witness monuments. If in disagreement with previously established corner, show the distances between the two corners and also indicate the ties to the disputed corner.



(i) I, William W. Nutter RLS, S-2299  
(type or print name) certify that the corner location on this record was determined by me or under my direction and control and that this U.S. Public Land Survey Monument Record is correct and complete to the best of my knowledge and belief.

William W. Nutter S-2299 Signature  
Date 2-17-2003

Index No. E 13