

CERTIFIED LAND CORNER RESTORATION

State of Wisconsin }
County of Oneida } ss.

I, John H. Fisher, do hereby certify that on the 20th day of May 81, 1981, I found evidence of the south one quarter corner of Section 4 Township 36N, Range 5E, Fourth Principal Meridian, as described hereon; and that from this evidence I established a new monument and accessories as described hereon to perpetuate the original location of this corner:

Description of original monument and accessories and subsequent restorations:

The original Gov't. survey was performed by Joseph H. Jenkins, Deputy Surveyor in June, 1863

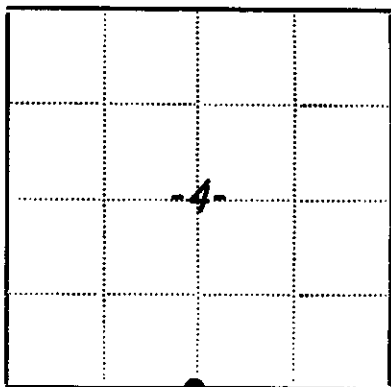
Set wood post
10" White Pine S70°E, 7 links
8" Tamarack N62°E, 17 links

Description of corner evidence found:

W. C. D. 2" iron pipe with brass cap, (1940)
14" Norway Pine S32°E, 14.7 feet
13" Norway Pine N74°W, 14.3 feet

Description of monument and accessories I established to perpetuate the location of this corner:

None



● - Corner monument restored
□ -

Resident witnesses.....

Dated at Minocqua Wisconsin, this 31 day of July 1981.

Signature John H. Fisher Title Registered Land Surveyor
(County Surveyor, Registered Land Surveyor, or other duly authorized official)

Surveyors Registration No. S-836

Office of REGISTER OF DEEDS County of Oneida

I hereby certify that the within instrument was filed in this office for record on the 17th day of September 1982, and was filed in Book No. of County Records.

Signature Don Verage Kuehn Title REGISTER OF DEEDS

Township....., Range....., Section....., Index No....., Page No.....

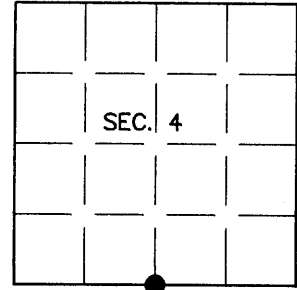
E-11

U.S. PUBLIC LAND SURVEY MONUMENT RECORD

Note: This form is intended and designed to fulfill all requirements of Wisconsin Administrative Code, Chapter A-E 7.08 U.S. Public Land Survey Monument Record (3)(a)(b)(c)(d)(e)(f)(g)(h)(i). An additional sheet may be added if necessary to conform with said requirements.

(a) CORNER LOCATION:
 1/4 Cor. of Secs. 4 & 9
 Township 36 North
 Range 5 East of the 4th P.M.
 Town of Little Rice

Plane Coordinates
 X:
 Y:
 Datum:
 County of Oneida



(b) HISTORY OF ORIGINAL CORNER ESTABLISHMENT

Original Surveyor: Joseph Jenkins
 Date of Survey: Commenced June, 1863
 Completed June, 1863

Original Accessories:
 W. Pine 10" S70E, 7 lks.
 Tamarack 8" N62E, 17 lks.

(b)(f)(g)(h) Description of monument found at this corner and if it was accepted, state all evidence (material, testimonial, occupational, plats, records, other monuments) used as a basis for accepting. If not accepted or if nothing was found, state evidence used as basis for establishing location. If re-established through lost corner proportionate methods, indicate all monuments, distances and directions used to establish. Indicate type of monument and sign post found or set.

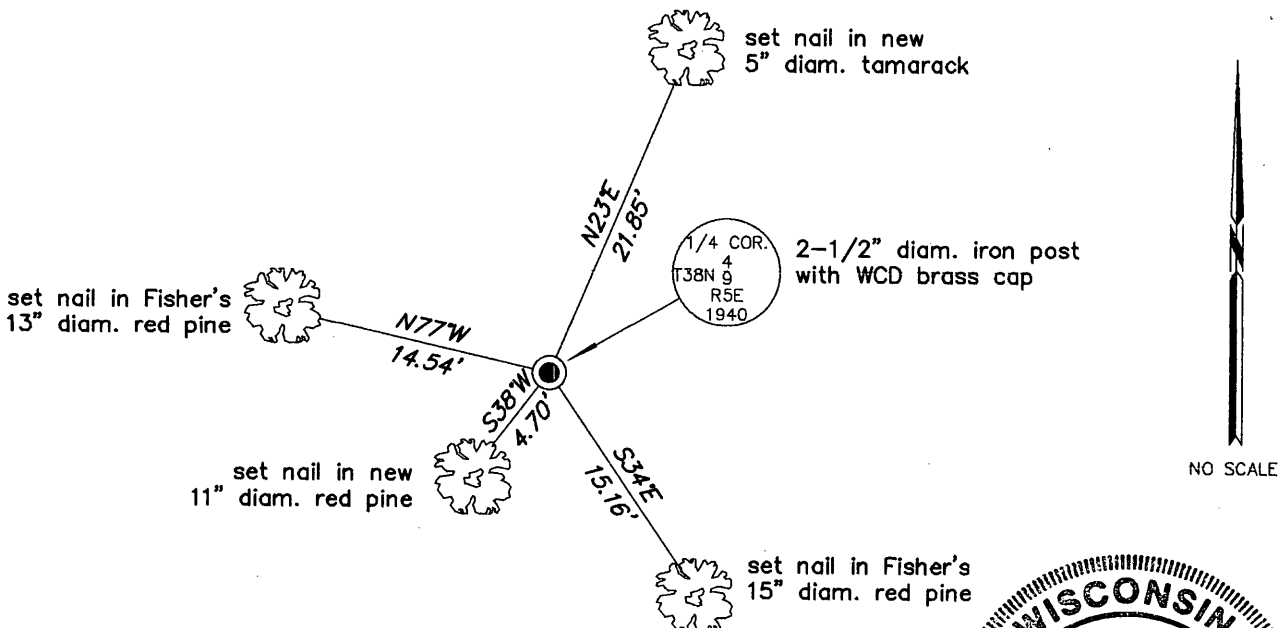
NOTE: This is a perpetuation of a previous USPLS Monument Record by John H. Fisher, RLS dated July 31, 1981 and filed in the office of the Oneida County Register of Deeds. A complete history of the corner can be found on the previous monument record. I accept the previous location as a true and faithful perpetuation or reestablishment of the original corner location and further perpetuate it as follows.

26 April 2007: I found and accepted an iron post, 2-1/2" diam. with WCD brass cap projecting 14" above the ground. Both of Fisher's trees in good condition. I found and established accessories as shown below and set a white plastic sign post Northeast, 1 ft. dist.

REGISTER OF DEEDS OFFICE
 ONEIDA COUNTY, WIS.

 At _____ O'Clock _____ M
THOMAS H. LEIGHTON
 REGISTER OF DEEDS

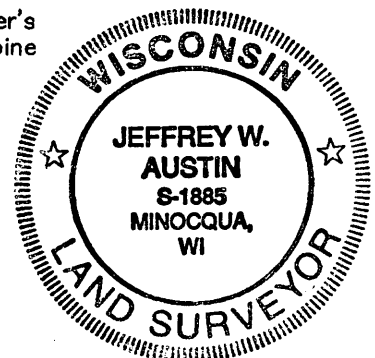
(c)(d)(e) Plan view of corner with ties to at least 4 witness monuments. If in disagreement with previously established corner, show the distances between the two corners and also indicate the ties to the disputed.



(i) I, Jeffrey W. Austin, Registered Land Surveyor No. S-1885, hereby certify upon honor that the corner location on this record was determined by me or under my direction and control and that this U.S. Public Land Survey Monument Record is correct and complete to the best of my knowledge and belief.

Signature

MAR - 8, 2008
 Date



INDEX NO. E-11 (3605040020)