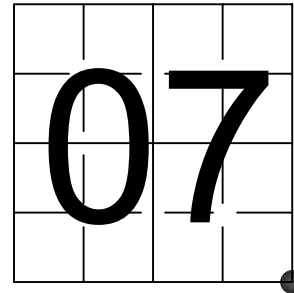


# U S PUBLIC LAND SURVEY MONUMENT RECORD

NOTE: This form is intended and designed to fulfill all requirements of Wisconsin Administrative Code, Chapter A-E 7.08 U.S. Public Land Survey Monument Record (3) (a-i)

A-E 7.08(3)(a) Identity of corner  
SOUTHEAST CORNER OF SECTION 07  
TOWNSHIP 36 NORTH  
RANGE 05 EAST OF THE 4TH PM  
TOWN OF LITTLE RICE,  
COUNTY OF ONEIDA

WISCRS - ONEIDA COUNTY  
N: 155,967.264 USft (XXX,XXX.XX)  
E: 139,205.473 USft (XXX,XXX.XX)  
Datum: NAD83 (2011)  
GNSS Method RTN - Direct  
GNSS Control WISCORS VRS



The coordinate value shown has been verified by the average of two or more GPS observations at a markedly different time. Values shown in parenthesis, are previously published measurements.

A-E 7.08(3)(b) Description of any record evidence, monument evidence, occupational evidence, testimonial evidence, or any other material evidence.

Original Surveyor: Joseph H. Jenkins

Date of Original Survey Commenced: June 1, 1863  
Completed: June 10, 1863

Original Accessories:  
Spruce 5 S 07° W 70 Links  
"No other near...nearly all swamp"

See Previous Monument Record: Index No. NONE - THENCE:

May 27, 1952 - Genisot Engineering - Oneida Co. Map C339 - subdivided Section 18 for William Newton Jr. - Job #1938. Map C339 indicates a "wood post (set by others)" at this position, with no accessories. It is assumed that Genisot found the wood post referenced on Map C339 because of this reference.

May 27, 1952 - Genisot Engineering - Field notes of Job #1938 - Survey for Wm. Newton Jr. - indicate that the surveyor (presumably Surveyor Joseph C. Kirby of Genisot) ran a random line east from the NW corner Section 18, by sighting south along the west line of Section 18 and turning a c.c.w. (counter clockwise) angle of 90°55' and setting "hubs" & "pickets" on the random line, including a picket at 26+26.80, and a "Temp Sec Corner" at 52+26.8. There are no accessories mentioned in the the field notes for the north line, but the notes state "found old corner 2.68 So of random". The notes are blurred to the point of being illegible.

In both documents, Genisot indicates a number of interior 1/16th corners were monumented.

A-E 7.08(3)(f) Whether the corner was restored through acceptance of an obliterated location or a found perpetuated location.

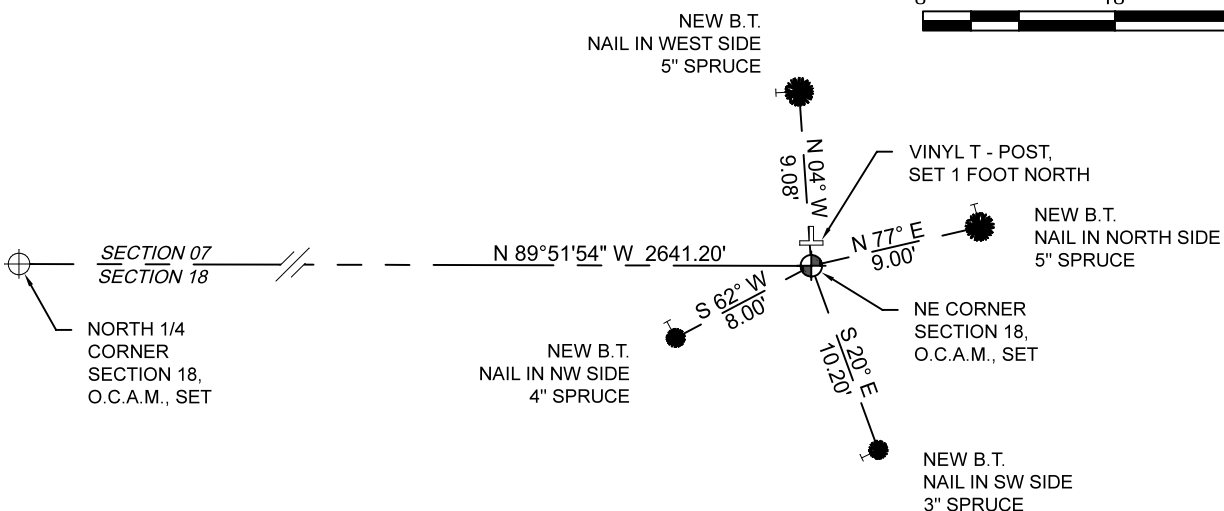
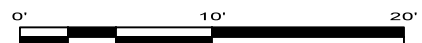
March 29, 2022 - I found a 1 3/4" diameter iron pipe 2,627.36 feet (26+26.80), and another 1 3/4" diameter iron pipe at 3985.32 feet (39+89.4) from the northwest corner of Section 18, and an interior angle of 90°37'37" (from NW cor. BS west line of section, turn c.c.w.). Because these pipes did not fit with the interior monuments and the section corners on the west line and south line of Section 18, I dismissed them as it appeared that they were on the random line. After a careful search I determined the corner to be obliterated. I restored the location by using the interior 16th corner monuments.

May 3, 2022, I set an Oneida County - 3" diameter aluminum pipe monument, which is 5 feet long, and having a 3.5" diameter aluminum tablet stamped to identify the corner affixed to the top.

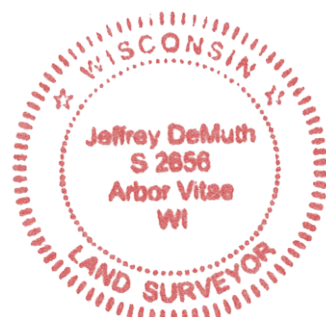
I accept this monument as RESTORED THROUGH ACCEPTANCE OF AN OBLITERATED LOCATION and established 5 new witnesses as shown below.

A-E 7.08(3)(c)(d)(e)(h) Plan view of corner with references to at least 4 witness monuments. If in disagreement with previously established corner, show the distances between the two corners and also indicate the ties to the disputed. The directions and distances to other public land survey corners used as evidence or used for determining the corner location.

BEARINGS LISTED TO THE NEAREST SECOND ARE REFERENCED TO WISCONSIN COUNTY COORDINATE REFERENCE SYSTEM - ONEIDA COUNTY ZONE. ALL OTHER BEARINGS ARE MAGNETIC.



A-E 7.08(3)(i) I, Jeffrey L. DeMuth, Professional Land Surveyor No. S-2656, hereby certify that the corner location on this record was determined by me or under my direction and control and that this U.S. Public Land Survey Monument Record is correct and complete to the best of my knowledge, and belief



SIGNATURE

*Handwritten signature of Jeffrey L. DeMuth*

October 27, 2023

DATE

43605070000