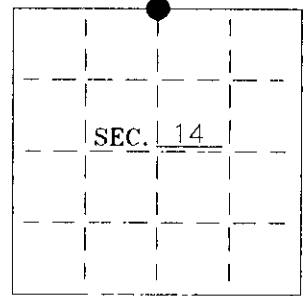


**U. S. PUBLIC LAND SURVEY MONUMENT RECORD**

Note: This form is intended and designed to fulfill all requirements of Wisconsin Administrative Code-Chapter A-E 7.08 U. S. Public Land Survey Monument Record (3)(a)(b)(c)(d)(e)(f)(g)(h)(i). An additional sheet may be added if necessary to conform with said requirements.

(a) CORNER LOCATION: State Plane Coordinates  
 N 1/4 corner of Sec. 14 X \_\_\_\_\_  
 Township 36 North Y \_\_\_\_\_  
 Range 5 East Datum Base \_\_\_\_\_  
 Town Little Rice County of Oneida

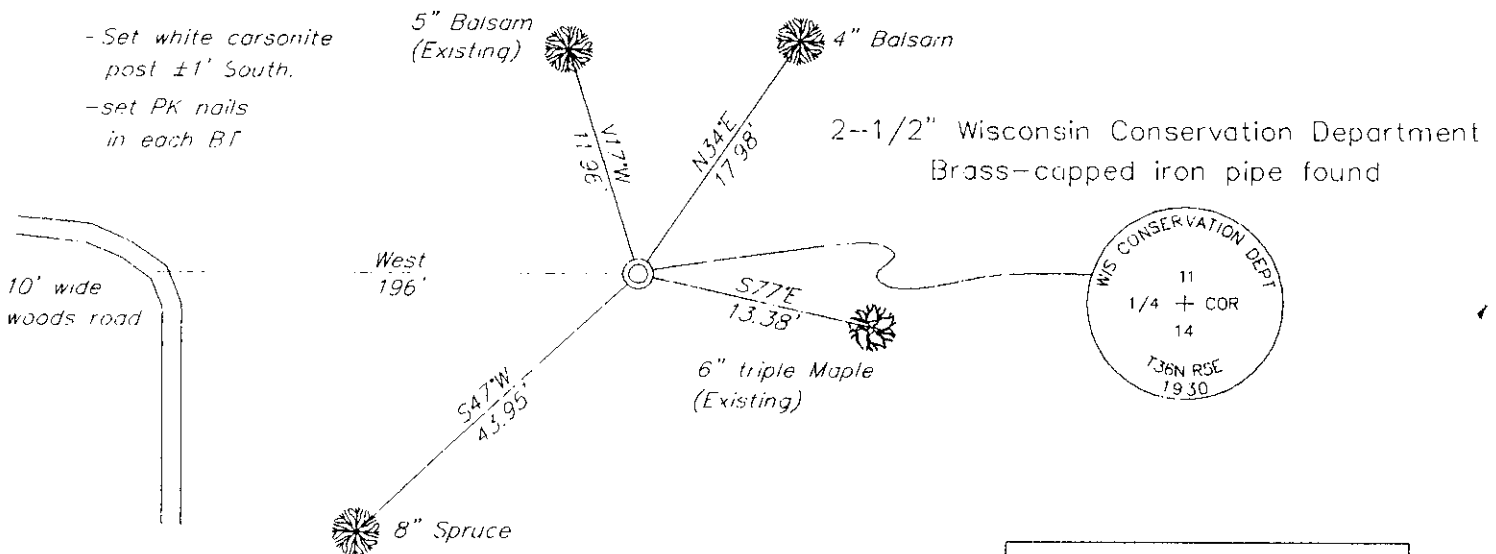


(b) HISTORY OF ORIGINAL CORNER ESTABLISHMENT:  
 Original Surveyor: J. Jenkins Original B.T.'S  
 Date of Survey: Commenced 1863 6" Tamarack N40°E, 12 lks  
 Completed 1863 6" Tamarack S28°W, 11 lks

(b)(f)(g)(h) Description of monument found at this corner and if it was accepted—state all evidence (material—testimonial—occupation—plats—records—other monuments) used as a basis for accepting. If not accepted or if nothing was found state evidence used as basis for establishing location. If reestablished through lost corner proportionate methods indicate all monuments—distances and directions used to establish. Indicate type of monument and sign post found or set.

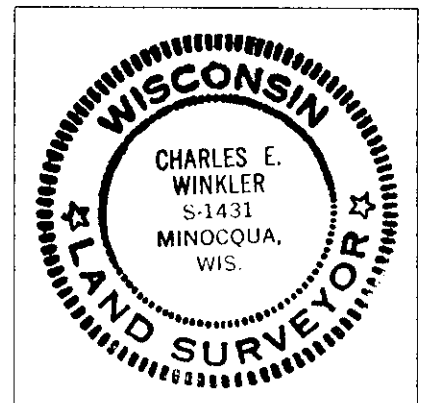
- 1983- On a map dated 3/9/87, William Stuth (O-I) show a monument "by others".
- 1986- On a map dated 3/9/87, William Stuth (O-I) shows a monument "by others", "No BT's" This is field work done in 1964.
- 2000- I found and accepted a 2-1/2" Brass-capped iron pipe stamped "Wisconsin Conservation Department 1930", up 30", with a 5" square wood post adjacent to the corner; scribed "S11-S1/4-S14". See sketch below.

(c)(d)(e) Plan view of corner with ties to at least 4 witness monuments. If in disagreement with previously established corner—show the distances between the two corners and also indicate the ties to the disputed.



(i) I Charles E. Winkler S-1431 hereby certify that the corner location on this record was determined by me or under my direction and control and that this U.S. Public Land Survey Monument Record is correct and complete to the best of my knowledge and belief.

Signature Charles E. Winkler Date 7/30/2001  
 Foltz and Associates, Inc.



INDEX NO. 5 19

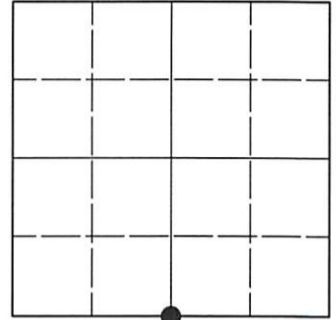
3605110020

**U.S. PUBLIC LAND SURVEY MONUMENT RECORD**

Note: This form is intended and designed to fulfill all requirements of Wisconsin Administrative Code, Chapter A-E 7.08 U.S. Public Land Survey Monument Record (3)(a-i).

(a) CORNER LOCATION  
 1/4 Cor. of Secs. 11 & 14  
 Township 36 North  
 Range 5 East of the 4th P.M.  
 Town of Little Rice  
 County of Oneida

WISCORS - Oneida County  
 N: 156,053.87 USft  
 E: 157,657.82 USft  
 Datum: NAD 83(2011) ep. 2010.00  
 GNSS Method: RTN - Direct  
 GNSS Control: WISCORS VRS



Sec. 11, T. 36 N., R. 5 E.

(b)(f)(g)(h) Description of monument found at this corner and if it was accepted, state all evidence (material, testimonial, occupational, plats, records, other monuments) used as a basis for accepting. If not accepted or if nothing was found, state evidence used as basis for establishing location. If re-established through lost corner proportionate methods, indicate all monuments, distances and directions used to establish. Indicate type of monument and sign post found or set.

This record is a perpetuation of the following land corner document(s):

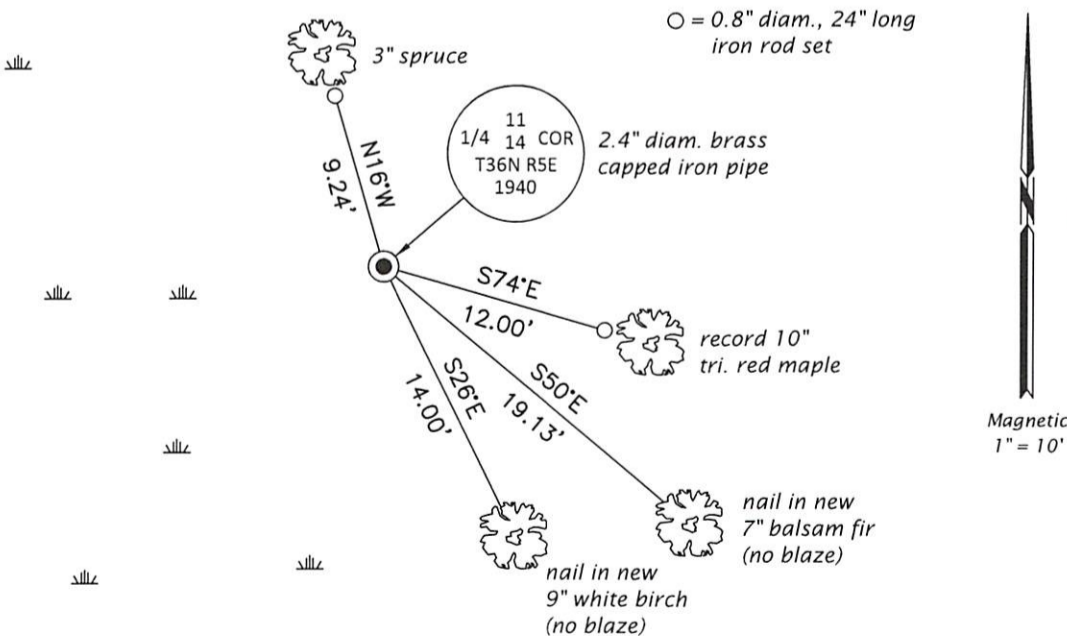
July 30, 2001: USPLS Monument Record by Charles E. Winkler, filed in Oneida County

A complete history of the corner can be found on the previous land corner document(s). I accept the record activity as a true and faithful perpetuation or reestablishment of the original corner location and further perpetuate it as described below.

July 8, 2022: I found and accepted the record monument, a 2.4" diam. iron pipe, loosely set, with a 2.4" diam. WCD brass cap projecting 32" above the ground surface. The record balsam bearing trees are gone. The record spruce bearing tree is wind-thrown. I found or established accessories as indicated below. I found a white vinyl sign post bearing Southeast, 0.9 ft.

The coordinate value shown is the weighted mean of two or more GNSS observations at markedly different times satisfying the accuracy requirements defined and qualified in the 2022 Oneida County Fee Schedule for USPLS Corners.

(c)(d)(e) Plan view of corner with ties to at least 4 witness monuments. If in disagreement with previously established corner, show the distances between the two corners and also indicate the ties to the disputed.

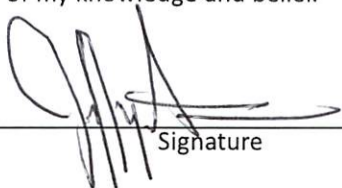


REGISTER OF DEEDS OFFICE  
 ONEIDA COUNTY  
 FILED

AUG 31 2022

KYLE J. FRANSON  
 REGISTER OF DEEDS

(i) I, Jeffrey W. Austin, Professional Land Surveyor No. S-1885, hereby certify that the corner location on this record was determined by me or under my direction and control and that this U.S. Public Land Survey Monument Record is correct and complete to the best of my knowledge and belief.

  
 Signature

AUG - 1, 2022  
 Date