

U.S. PUBLIC LAND SURVEY MONUMENT RECORD

Note: This form is intended and designed to fulfill all requirements of Wisconsin Administrative Code, Chapter A-E 7.08 U.S. Public Land Survey Monument Record (3) (a) (b) (c) (d) (e) (f) (g) (h) (i). An additional sheet may be added if necessary to conform with said requirements.

(a) Corner location: Township 36 North

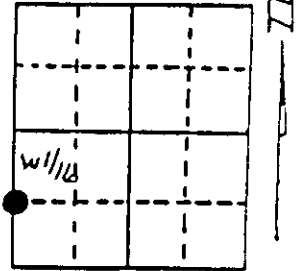
Range 6 East West

COR ID

43605121000

Town/City/Village NOKOMIS

County ONEIDA



Section 7

(b) (f) (g) (h) Description of monument found at this corner and if it was accepted, state all evidence (material, testimonial, occupational, plats, records, other monuments) used as a basis for accepting. If not accepted or if nothing was found, state evidence used as basis for establishing location. If reestablished through lost corner proportionate methods, indicate all monuments, distances and directions used to establish. Indicate type of monument found or set and sign post.

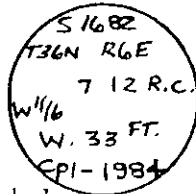
RAILROAD SPIKE FOUND

NAIL IN 10" R. PINE S69°W, 39.60 FT.

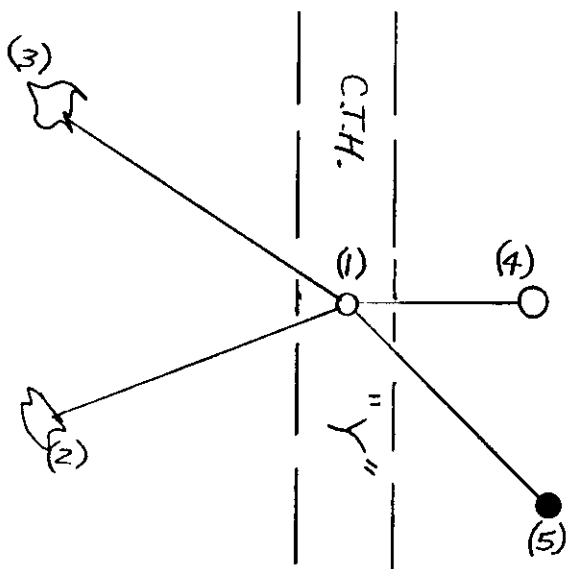
NAIL IN 7" R. PINE N57°W, 40.77 FT.

1" DIA. IRON PIPE WITH 2" DIA. ALLOY TABLET EAST, 33.00 FT. STAMPED

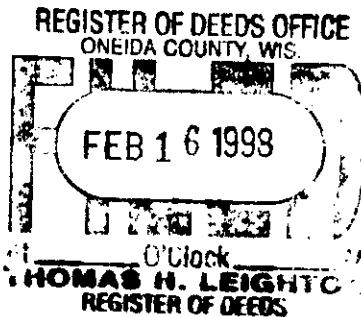
This corner was referenced out in advance of road construction as an act of preserving survey evidence. This corner has not been tested for its accuracy during the course of this preservation and it is recommended that the corner be evaluated for its validity by those using it.



(c) (d) (e) Plan view of corner with ties to at least 4 witness monuments. If in disagreement with previously established corner, show the distances between the two corners and also indicate the ties to the disputed corner.



- (1) RAILROAD SPIKE
- (2) NAIL IN 10" R. PINE S69°W, 39.60 FT.
- (3) NAIL IN 7" R. PINE N57°W, 40.77 FT.
- (4) 1" DIA. IRON PIPE WITH 2" DIA. ALLOY TABLET EAST, 33.00 FT.
- (5) 3/4" DIA. IRON ROD, SET S45°E, 50.00 FT.



(i) I, DENNIS B. ROBERTS
 (type or print name) certify that the corner location on this record was determined by me or under my direction and control and that this U.S. Public Land Survey Monument Record is correct and complete to the best of my knowledge and belief.

Dennis B. Roberts
 Signature

Date



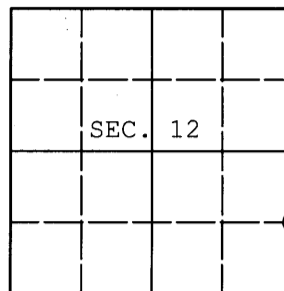
Index No. H 1

3605121000
 Stamp

U.S. PUBLIC LAND SURVEY MONUMENT RECORD

Note: This form is intended and designed to fulfill all requirements of Wisconsin Administrative Code, Chapter A-E 7.08 U.S. Public Land Survey Monument Record (3) (a) (b) (c) (d) (e) (f) (g) (h) (i). An additional sheet may be added if necessary to conform with said requirements.

(a) CORNER LOCATION: WISCORS - Oneida County
 S 1/16 Cor. of Secs. 7 & 12 N: 157,274.62 USft
 Township 36 North E: 165,652.59 USft
 Range 5 & 6 East of the 4th P.M. Datum: NAD 1983(2011)
 Town of Little Rice & Nokomis County of Oneida



(b) HISTORY OF ORIGINAL CORNER ESTABLISHMENT

Original Surveyor: Original Accessories:
 Date of Survey: Commenced:
 Completed:

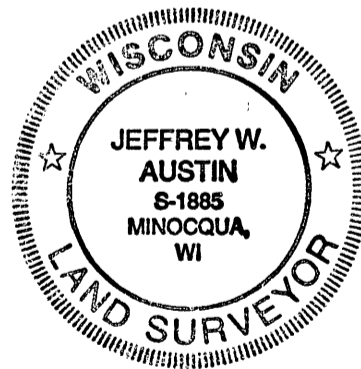
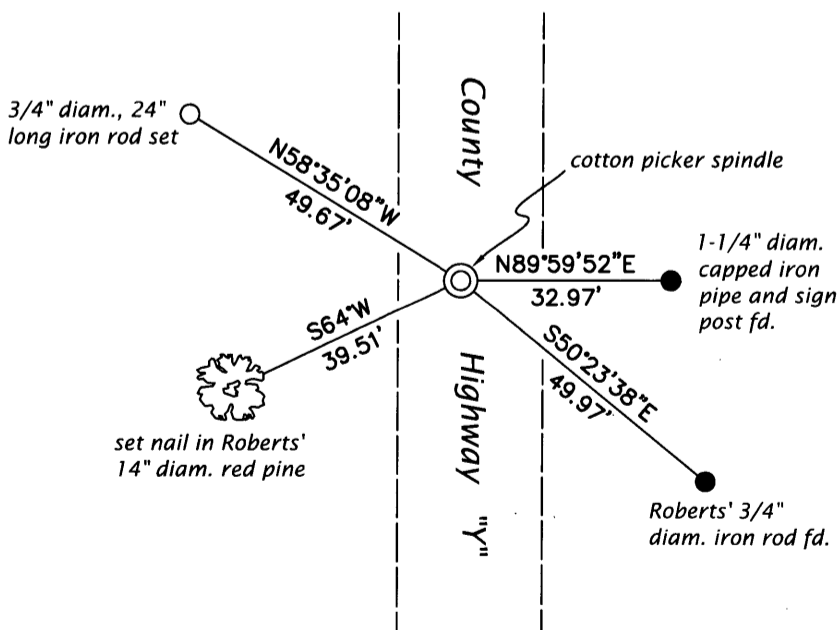
(b) (f) (g) (h) Description of monument found at this corner and if it was accepted, state all evidence (material, testimonial, occupational, plats, records, other monuments) used as a basis for accepting. If not accepted or if nothing was found, state evidence used as basis for establishing location. If re-established through lost corner proportionate methods, indicate all monuments, distances and directions used to establish. Indicate type of monument and sign post found or set.

This is a perpetuation of a previous USPLS Monument Record by Dennis B. Roberts, RLS dated December 3, 1997 and filed in the office of the Oneida County Register of Deeds. A complete history of the corner can be found on the previous monument record. I accept the previous location as a true and faithful perpetuation or reestablishment of the original corner location and further perpetuate it as follows.

June 19, 2013: Prior to road construction, I found and accepted the record monument, a railroad spike 2 ft. West of the centerline of County Highway Y. I performed a GPS observation referenced to the WISCORS GNSS Network. I found or established accessories as shown below.

August 1, 2015: Following road construction, I returned and set a cotton picker spindle at the corner point from the reference monuments established previously. I performed a second GPS observation referenced to the WISCORS GNSS Network. The coordinates shown are the mean of the two observations that differed by 0.04 ft.

(c) (d) (e) Plan view of corner with ties to at least 4 witness monuments. If in disagreement with previously established corner, show the distances between the two corners and also indicate the ties to the disputed.



REGISTER OF DEEDS OFFICE
 ONEIDA COUNTY
 FILED

FEB 08 2016

AT _____ O'CLOCK _____ M
 KYLE J. FRANSON
 REGISTER OF DEEDS

(i) I, Jeffrey W. Austin, Professional Land Surveyor No. S-1885, hereby certify that the corner location on this record was determined by me or under my direction and control and that this U.S. Public Land Survey Monument Record is correct and complete to the best of my knowledge and belief.

Signature

Date

JAN. 14, 2016