

# U.S. PUBLIC LAND SURVEY MONUMENT RECORD

Instructions: This record shall show the location of the corner and shall include all of the following nine elements (a through i).

(a) Identify the corner by reference to the U.S. public land survey system.

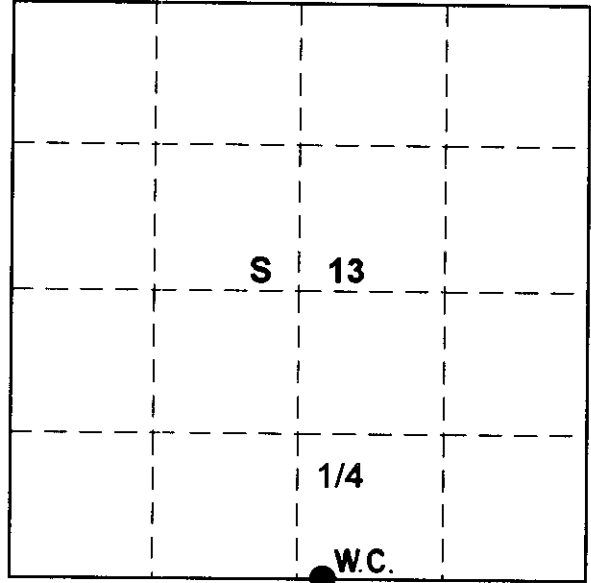
○ = Corner monument restored.

S-1/4 Corner

Sec. 13, T 36 N, R 5E

Type of Monument:

2-1/4" Alum. Pipe with 3-1/4" alloy cap.



## ONEIDA COUNTY

(b) Describe any record evidence, monument evidence, occupational evidence, testimonial evidence or any other material evidence you considered, and whether the monument was found or placed.

Original corner established in 1863 by Joseph H. Jenkins Gov't. Surveyor from which Tanarack 6" bears S1W 34lks and Tamarack 8" bears N77E 78lks.

Original position now under water of Killarney lake flowage. No record or evidence of any M.C. or W.C. Set from previous surveys.

Total distance from established SE section corner to SW section corner section 13, is 5115.30' set 1/4 corner on a proportional measurement 2557.65'

Set a witness corner N89- 57-46-E 341.50' of 1/4 corner position.

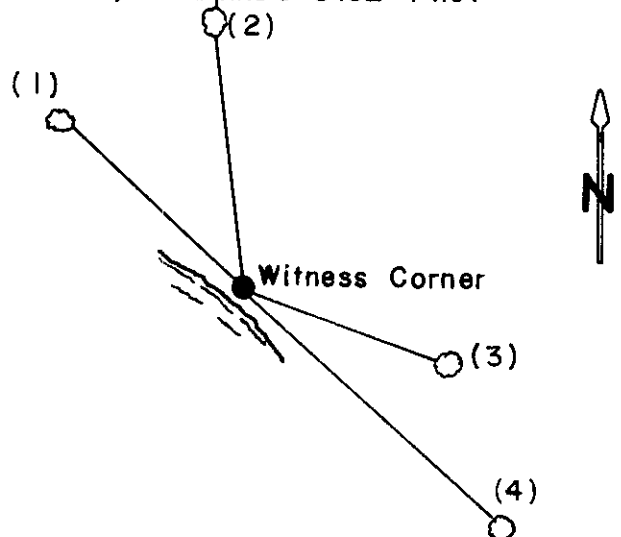
Set a 2-1/4" alum. Pipe with 3-1/4" alloy cap 22.0' east of waters edge and 10.0 north.

(c) In the plan view drawing below, provide reference ties to at least 4 witness monuments, or, if the location is within a municipality, to at least 2 witness monuments. (Witness monuments shall be made of concrete, natural stone, iron or other equally durable material).

Describe witness monuments:

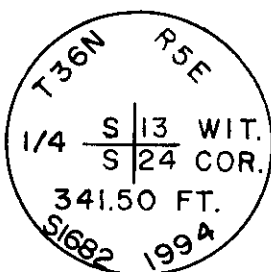
(d) Show a plan view drawing depicting the relevant monuments and reference ties which is sufficient in detail to enable accurate relocation of the corner monument if the corner monument is disturbed. Indicate north.

- Marked NBTs to W.C.
- 1.) White pine 7" N48W 52.15'
  - 2.) Jack pine 9" N7W 57.44'
  - 3.) White pine 4" S70E 46.49'
  - 4.) Red pine 5" S48E 74.01'



### Monument Set

2-1/4" Alum. Pipe w/3-1/4' alloy cap  
Flush with ground---Sign and post 1.0' north



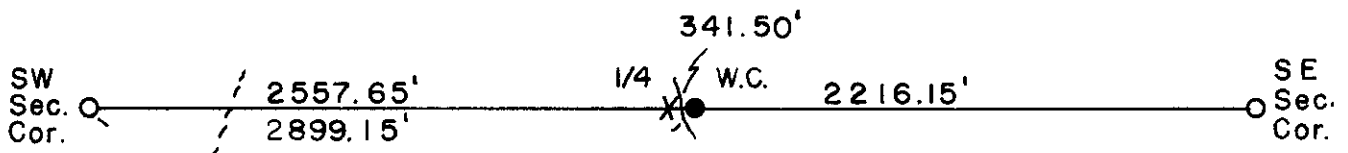
County File No. N - 23

3605130019

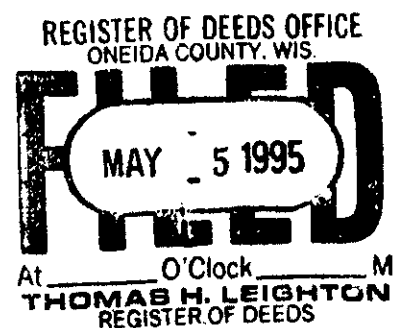
(e) Describe any material discrepancy between the location of the corner as restored or reestablished and the location of that corner as previously restored or reestablished by distance and direction. Show the discrepancy on the plan view drawing under (d), above. Show the distances between the corner as previously restored or reestablished and (1) the corner as restored or reestablished, and (2) to at least 2 of the witness monuments shown on the drawing in (d), above.

(f) Was the corner restored through acceptance of (1) an obliterated evidence location, or, (2) a found perpetuated location?

(g&h) Was the corner reestablished through lost corners proportionate methods? If so, show the method, including the directions and distances to other public land survey corners used as evidence or used for proportioning in determining the corner location? Proportionate method



KILLARNEY LAKE



(i) I, Glen Barker (type or print name) certify that the corner location shown on this record was determined by me or under my direction and control and that this U.S. Public Land Survey Monument is correct and complete to the best of my knowledge and belief.



Glen Barker  
Signature

5/6/95  
Date

13 36 5E  
SEC TWN RNG