

CERTIFIED LAND CORNER RESTORATION

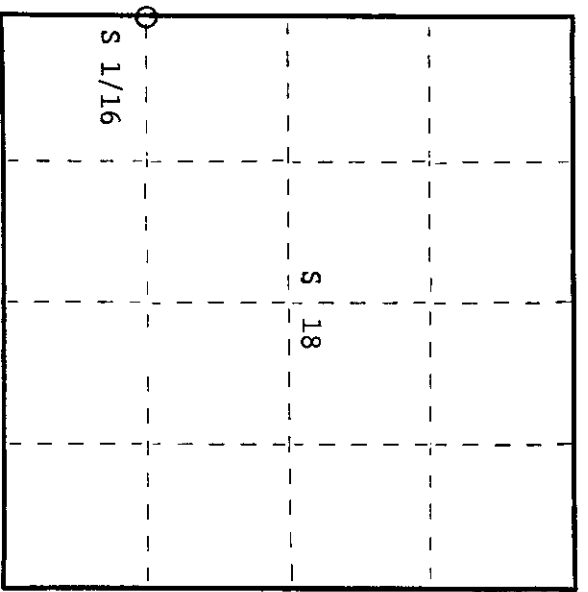
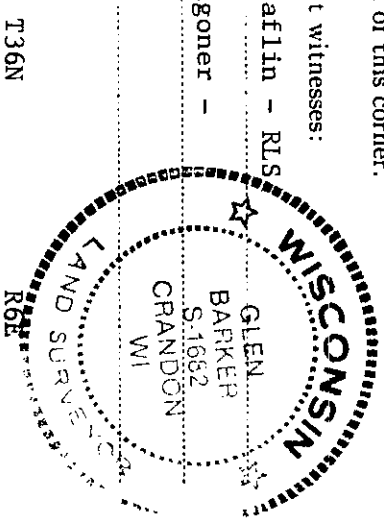
Index No. M-1

State of Wisconsin }
 County of Oneida } ss.

History of original corner establishment:
 No evidence of any previous corner.

I, Glen Barker, do hereby certify that on the 26th day of January, 1984, I found & established the S 1/16 corner of the Sections 13 & 18 Township 36 North, Range 5 & 6 E, Fourth Principal Meridian, as described hereon; and that from this evidence I established a new monument and accessories as described hereon to perpetuate the original location of this corner.

Resident witnesses:
 J. Claflin - RLS
 H. Wagoner -



○ = Corner monument restored.

Description of corner evidence found:
 Total distance from section corner 13-24/18-19 T36N R5 & 6E to 1/4 corner between sections 13 & 18 is 2638.67'.
 Set S 1/16 1319.34' intermediate.

Description of monument and accessories I established to perpetuate the original location of this corner.
 Set a rail road spike in center line of C.T.H. "Y" for true corner. Set a 1" iron pipe with 2" diameter alloy cap 33.0' east of true corner for reference corner, cap stamped: Monument projects 18" above ground.
 Marked NBTs to true corner.
 Jack pine 6" S68E 52.82'
 Jack pine 6" S81W 31.82'
 Scribbled 1/16 B.T.
 S 1/16 13 18 Ref Cor
 W 33 ft.
 CPI - 1984

Dated at Rhinelander, Wis., this 20th day of February, 1984.
 Signature: *Glen Barker* Title: Registered Land Surveyor Registration No. S1682
 (County Surveyor, Registered Land Surveyor, or other duly authorized official)

Office of Register of Deeds, County of Oneida
 Instrument was filed in this office for record on the 23rd day of May, 1984 at 1:00 o'clock P.M.
 I hereby certify that the within

Doris George Fisher
 (Register of Deeds)

By: Deputy

3605131000

U.S. PUBLIC LAND SURVEY MONUMENT RECORD

Note: This form is intended and designed to fulfill all requirements of Wisconsin Administrative Code, Chapter A-E 7.08 U.S. Public Land Survey Monument Record (3) (a) (b) (c) (d) (e) (f) (g) (h) (i). An additional sheet may be added if necessary to conform with said requirements.

(a) Corner location: Township 36 North

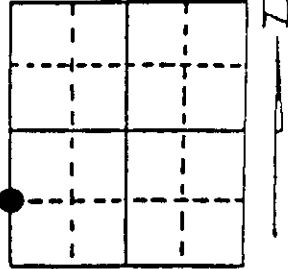
COR 10

Range 6 East ~~West~~

43605131000

Town/City/Village NOKOMIS

County ONEIDA



Section 18

(b) (f) (g) (h) Description of monument found at this corner and if it was accepted, state all evidence (material, testimonial, occupational, plats, records, other monuments) used as a basis for accepting. If not accepted or if nothing was found, state evidence used as basis for establishing location. If reestablished through lost corner proportionate methods, indicate all monuments, distances and directions used to establish. Indicate type of monument found or set and sign post.

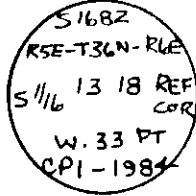
RAILROAD SPIKE, FOUND SET BY GLEN BARKER S-1682 IN 1984

NAIL IN 6" J. PINE S81°W, 31.82 FT.

NAIL IN 6" J. PINE S68°E, 52.82 FT.

1 1/2" DIA. IRON PIPE WEST, 33.00 FT.

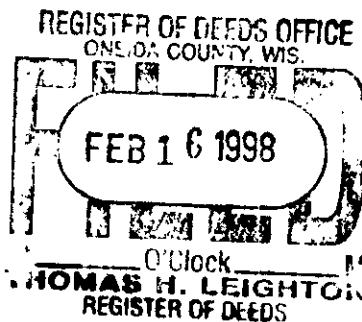
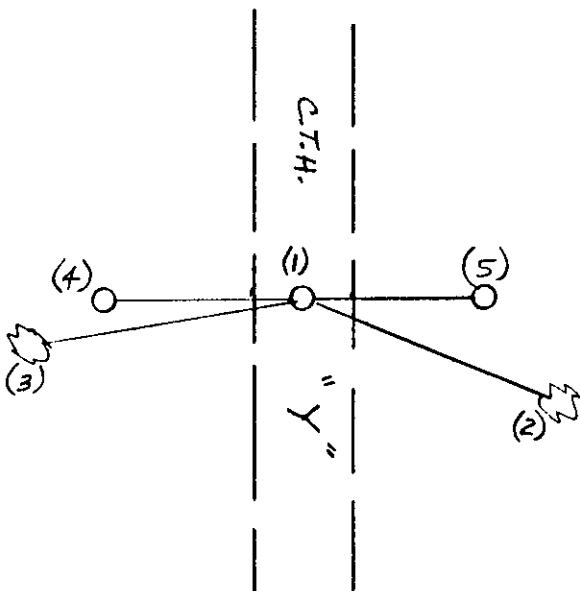
1" DIA PIPE WITH 2" DIA. ALLOY TABLET, EAST 33.10 FT. (33 FT.) STAMPED



This corner was referenced out in advance of road construction as an act of preserving survey evidence. This corner has not been tested for its accuracy during the course of this preservation and it is recommended that the corner be evaluated for its validity by those using it.

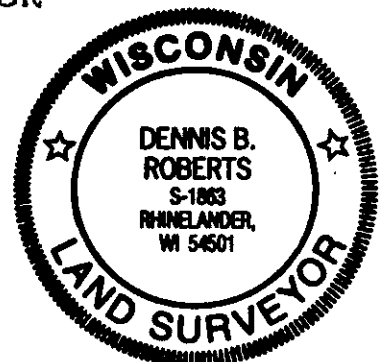
(c) (d) (e) Plan view of corner with ties to at least 4 witness monuments. If in disagreement with previously established corner, show the distances between the two corners and also indicate the ties to the disputed corner.

- (1) RAILROAD SPIKE, FOUND
- (2) NAIL IN 6" J. PINE S81°W, 31.82 FT.
- (3) NAIL IN 6" J. PINE S68°E, 52.82 FT.
- (4) 1 1/2" DIA. IRON PIPE WEST, 33.00 FT.
- (5) 1" DIA. IRON PIPE WITH 2" DIA. ALLOY TABLET EAST, 33.10 FT.



(i) I, DENNIS B. ROBERTS

(type or print name) certify that the corner location on this record was determined by me or under my direction and control and that this U.S. Public Land Survey Monument Record is correct and complete to the best of my knowledge and belief.



Dennis B. Roberts

12-03-97

Signature

Date

3605131000

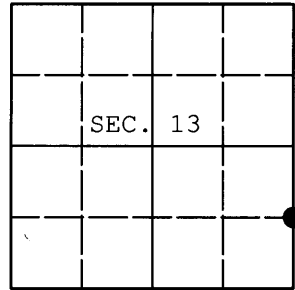
Stamp

Index No. M-1

U.S. PUBLIC LAND SURVEY MONUMENT RECORD

Note: This form is intended and designed to fulfill all requirements of Wisconsin Administrative Code, Chapter A-E 7.08 U.S. Public Land Survey Monument Record (3) (a) (b) (c) (d) (e) (f) (g) (h) (i). An additional sheet may be added if necessary to conform with said requirements.

(a) CORNER LOCATION: WISCORS - Oneida County
 S 1/16 Cor. of Secs. 13 & 18 N: 151,999.35 USft
 Township 36 North E: 165,562.04 USft
 Range 5 & 6 East of the 4th P.M. Datum: NAD 1983(2011)
 Town of Little Rice & Nokomis County of Oneida



(b) HISTORY OF ORIGINAL CORNER ESTABLISHMENT

Original Surveyor: Original Accessories:
 Date of Survey: Commenced:
 Completed:

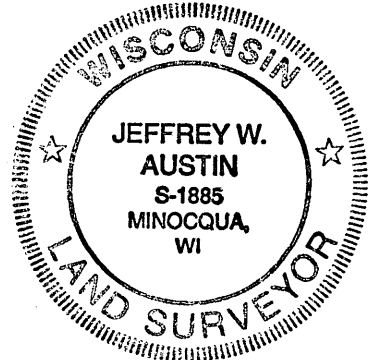
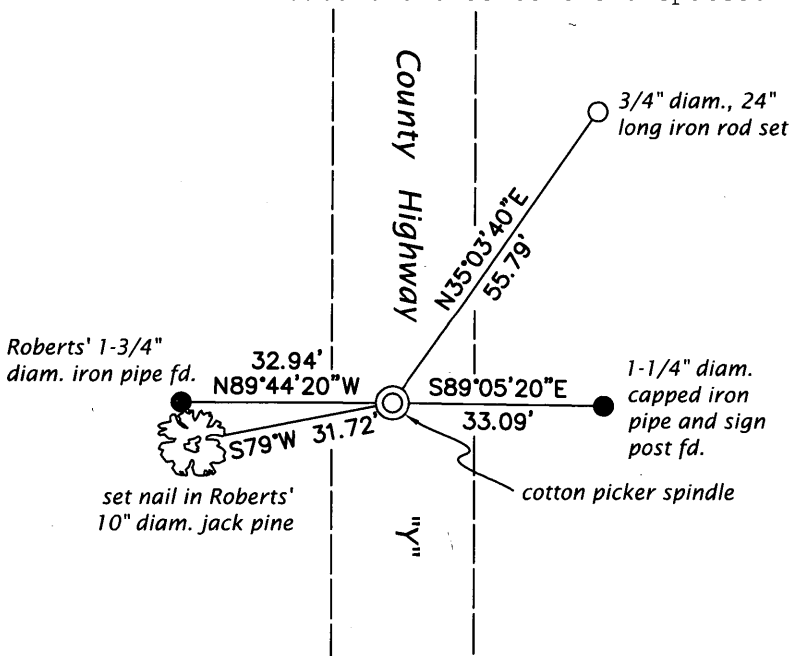
(b) (f) (g) (h) Description of monument found at this corner and if it was accepted, state all evidence (material, testimonial, occupational, plats, records, other monuments) used as a basis for accepting. If not accepted or if nothing was found, state evidence used as basis for establishing location. If re-established through lost corner proportionate methods, indicate all monuments, distances and directions used to establish. Indicate type of monument and sign post found or set.

This is a perpetuation of a previous USPLS Monument Record by Dennis B. Roberts, RLS dated December 3, 1997 and filed in the office of the Oneida County Register of Deeds. A complete history of the corner can be found on the previous monument record. I accept the previous location as a true and faithful perpetuation or reestablishment of the original corner location and further perpetuate it as follows.

June 19, 2013: Prior to road construction, I found and accepted the record monument, a railroad spike 2 ft. West of the centerline of County Highway Y. I performed a GPS observation referenced to the WISCORS GNSS Network. I found or established accessories as shown below.

August 1, 2015: Following road construction, I returned and set a cotton picker spindle at the corner point from the reference monuments established previously. I performed a second GPS observation referenced to the WISCORS GNSS Network. The coordinates shown are the mean of the two observations that differed by 0.19 ft.

(c) (d) (e) Plan view of corner with ties to at least 4 witness monuments. If in disagreement with previously established corner, show the distances between the two corners and also indicate the ties to the disputed.



REGISTER OF DEEDS OFFICE
 ONEIDA COUNTY
 FILED

FEB 08 2016

AT _____ O'CLOCK _____ M
 KYLE J. FRANSON
 REGISTER OF DEEDS

(i) I, Jeffrey W. Austin, Professional Land Surveyor No. S-1885, hereby certify that the corner location on this record was determined by me or under my direction and control and that this U.S. Public Land Survey Monument Record is correct and complete to the best of my knowledge and belief.

Signature

Date

JAN. 14, 2016

3605131000 (INDEX NO. M-25)