

# U.S. PUBLIC LAND SURVEY MONUMENT RECORD

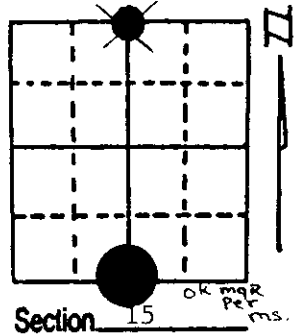
**Note:** This form is intended and designed to fulfill all requirements of Wisconsin Administrative Code, Chapter A-E 7.08 U.S. Public Land Survey Monument Record (3) (a) (b) (c) (d) (e) (f) (g) (h) (i). An additional sheet may be added if necessary to conform with said requirements.

(a) Corner location: Township 36 North

Range 5 East/West

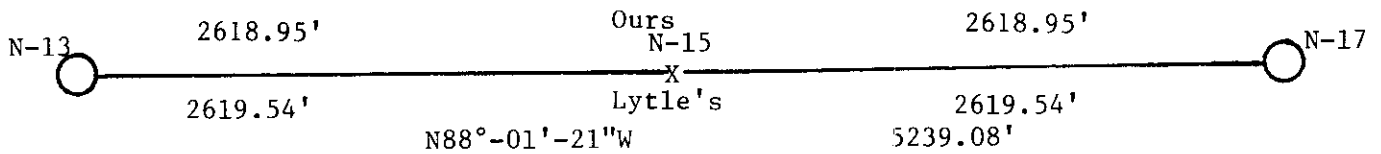
Town/City/Village Little Rice

County Oneida



(b) (f) (g) (h) Description of monument found at this corner and if it was accepted, state all evidence (material, testimonial, occupational, plats, records, other monuments) used as a basis for accepting. If not accepted or if nothing was found, state evidence used as basis for establishing location. If reestablished through lost corner proportionate methods, indicate all monuments, distances and directions used to establish. Indicate type of monument found or set and sign post.

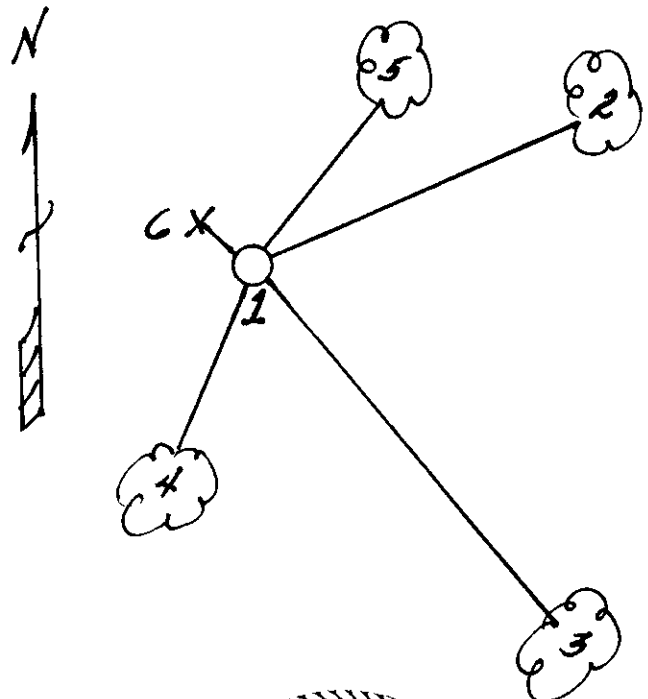
- 6/1863 - Joseph H. Jenkins established this corner at 39.80 chains, set a wood post with two BTs:  
 8" Tamarack, S56°W, 4 Links (2.64')      7" Tamarack, N30°W, 13 Links (8.58')
- 2/1935 - A. J. Lytle restored corner by Lost Methods, set a post with one BT, a 6" Aspen, N40°E, 3 1/4 Links (2.145')
- 4/19/1995 - Milo E. Stefan could find no trace of Lytle's work so again restored corner by Lost Methods.



(c) (d) (e) Plan view of corner with ties to at least 4 witness monuments. If in disagreement with previously established corner, show the distances between the two corners and also indicate the ties to the disputed corner.

- 1) 2" x 60" Aluminum Monument
- 2) 6" Red Oak, N68°E, 113.90'.
- 3) 18" Tamarack, S42°E, 231.27'.
- 4) 6" Aspen, S11°W, 38.03'.
- 5) 6" Black Spruce, N41°E, 70.90'.
- 6) Plastic Sign Post, Northwest, 1.0'.

Distances to nail in side of BTs.  
 Stump blaze scribed "BT".  
 Bearing tree posters placed on each BT.



REGISTER OF DEEDS OFFICE  
 ONEIDA COUNTY, WIS.  
**FILED**  
 MAY 23 1995  
 At O'Clock M  
**THOMAS H. LEIGHTON**  
 REGISTER OF DEEDS

(i) I, Milo E. Stefan  
 (type or print name) certify that the corner location on this record was determined by me or under my direction and control and that this U.S. Public Land Survey Monument Record is correct and complete to the best of my knowledge and belief.



Index No. N-15

Milo E. Stefan      May 11, 1995  
 Signature      Date

3605150020