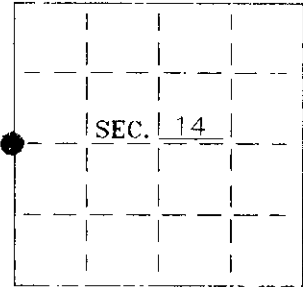


U. S. PUBLIC LAND SURVEY MONUMENT RECORD

Note: This form is intended and designed to fulfill all requirements of Wisconsin Administrative Code-Chapter A-E 7.08 U. S. Public Land Survey Monument Record (3)(a)(b)(c)(d)(e)(f)(g)(h)(i). An additional sheet may be added if necessary to conform with said requirements.

(a) CORNER LOCATION: State Plane Coordinates
 W1/4 corner of Sec. 14 X _____
 Township 36 North Y _____
 Range 5 East Datum Base _____
 Town Little Rice County of Oneida



(b) HISTORY OF ORIGINAL CORNER ESTABLISHMENT:

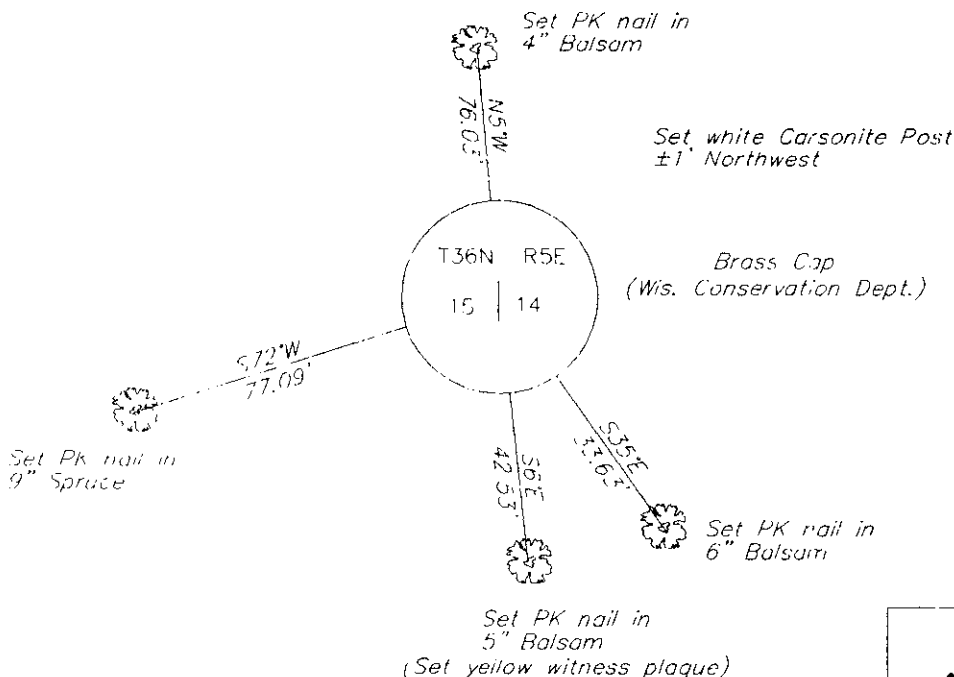
Original Surveyor: J. Jenkins Original B.T.'S
 Date of Survey: Commenced 1863 6" Tamarack, N42°E, 19lks
 Completed 1863 6" Tamarack, S53°W, 22lks

(b)(f)(g)(h) Description of monument found at this corner and if it was accepted—state all evidence (material—testimonial—occupation—plats—records—other monuments) used as a basis for accepting. If not accepted or if nothing was found state evidence used as basis for establishing location. If reestablished through lost corner proportionate methods indicate all monuments—distances and directions used to establish. Indicate type of monument and sign post found or set.

1983— A map drawn 3/9/87, W.H. Stuth (O-I) shows a corner "by others".

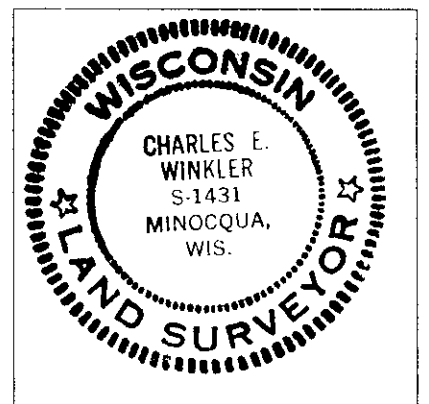
2000— I found and accepted a 2-1/2" W.C.D. Brass-Capped iron p-pipe with a rotted wood post adjacent to the corner. See sketch below.

(c)(d)(e) Plan view of corner with ties to at least 4 witness monuments. If in disagreement with previously established corner—show the distances between the two corners and also indicate the ties to the disputed.



(i) I Charles E. Winkler S-1431 hereby certify that the corner location on this record was determined by me or under my direction and control and that this U.S. Public Land Survey Monument Record is correct and complete to the best of my knowledge and belief.

Signature Charles E. Winkler Date 7/30/2001
 Foltz and Associates, Inc.



INDEX NO. L 17

3605 15 20 00