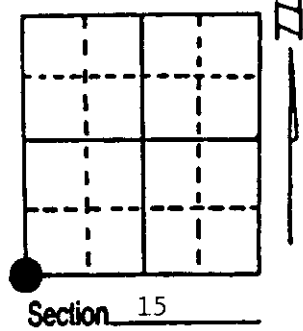


U.S. PUBLIC LAND SURVEY MONUMENT RECORD

Note: This form is intended and designed to fulfill all requirements of Wisconsin Administrative Code, Chapter A-E 7.08 U.S. Public Land Survey Monument Record (3) (a) (b) (c) (d) (e) (f) (g) (h) (i). An additional sheet may be added if necessary to conform with said requirements.

(a) Corner location: Township 36 North
 Range 5 East/West
 Town/City/Village Little Rice
 County Oneida

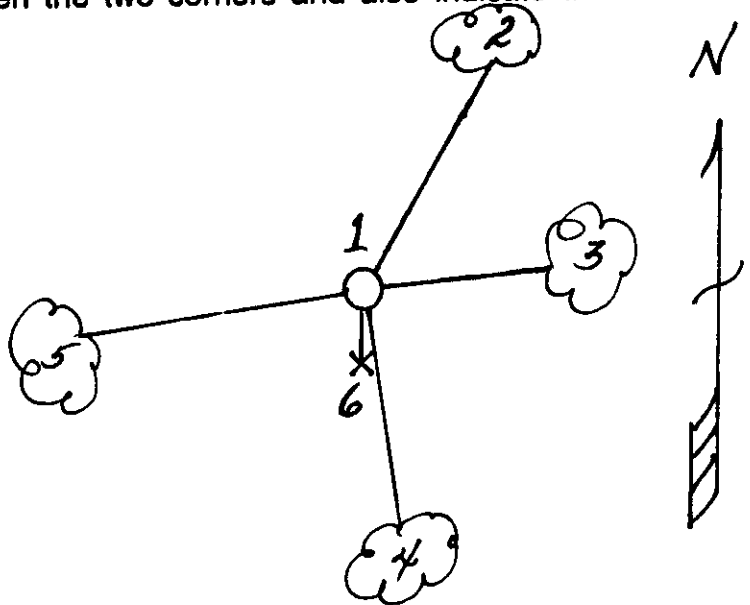


(b) (f) (g) (h) Description of monument found at this corner and if it was accepted, state all evidence (material, testimonial, occupational, plats, records, other monuments) used as a basis for accepting. If not accepted or if nothing was found, state evidence used as basis for establishing location. If reestablished through lost corner proportionate methods, indicate all monuments, distances and directions used to establish. Indicate type of monument found or set and sign post.

- 6/1863 - Joseph H. Jenkins established this corner. He set a wood post with BTs:
 5" Tamarack, N38°W, 4 Links (2.64') 5" Spruce, N65°E, 34 Links (22.44')
- 2/1935 - A. J. Lytle found stumps of original BTs. He made a new BT:
 6" Spruce, N34°E, 133 Links (87.78')
 His measured distance North was 73.17 chains (4829.22') and East was 79.38 chains (5239.08').
- 5/3/1995 - Milo E. Stefan found 2" x 60" iron pipe with brass cap. Could have been set by Lytle. We found distance North to be 4831.08' and East 5237.90'.

(c) (d) (e) Plan view of corner with ties to at least 4 witness monuments. If in disagreement with previously established corner, show the distances between the two corners and also indicate the ties to the disputed corner.

- 1) 2" x 60" Iron Pipe with Brass Cap.
- 2) 4" Tamarack, N24°E, 31.62'.
- 3) 3" Black Spruce, N86°E, 13.08'.
- 4) 6" Tamarack, S7°E, 35.49'.
- 5) 3" Tamarack, S86°W, 30.87'.
- 6) Plastic Sign Post, South, .65'.



Distances to nail in side of BTs.
 Stumps blaze scribed "BT".
 Bearing tree poster placed on each BT.

REGISTER OF DEEDS OFFICE
 ONEIDA COUNTY, WIS
FILED
 MAY 23 1995
 At _____ O'Clock _____ M
THOMAS H. LEIGHTON
 REGISTER OF DEEDS

(i) I, Milo E. Stefan
 (type or print name) certify that the corner location on this record was determined by me or under my direction and control and that this U.S. Public Land Survey Monument Record is correct and complete to the best of my knowledge and belief.



Milo E. Stefan Signature
 May 8, 1995 Date

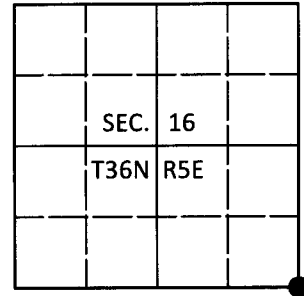
Index No. N-13

U.S. PUBLIC LAND SURVEY MONUMENT RECORD

Note: This form is intended and designed to fulfill all requirements of Wisconsin Administrative Code, Chapter A-E 7.08 U.S. Public Land Survey Monument Record (3)(a-i).

(a) CORNER LOCATION
 Cor. of Secs. 15, 16, 21 & 22
 Township 36 North
 Range 5 East of the 4th P.M.
 Town of Little Rice
 County of Oneida

WISCORS - Oneida County
 N: 150,934.24 USft
 E: 149,666.97 USft
 Datum: NAD 83(2011)
 GNSS Method: RTN - Direct
 GNSS Control: WISCORS VRS



(b) HISTORY OF ORIGINAL CORNER ESTABLISHMENT

Original Surveyor: _____ Original Accessories: _____
 Date of Survey Commenced: _____ See previous USPLS Monument Record
 Completed: _____

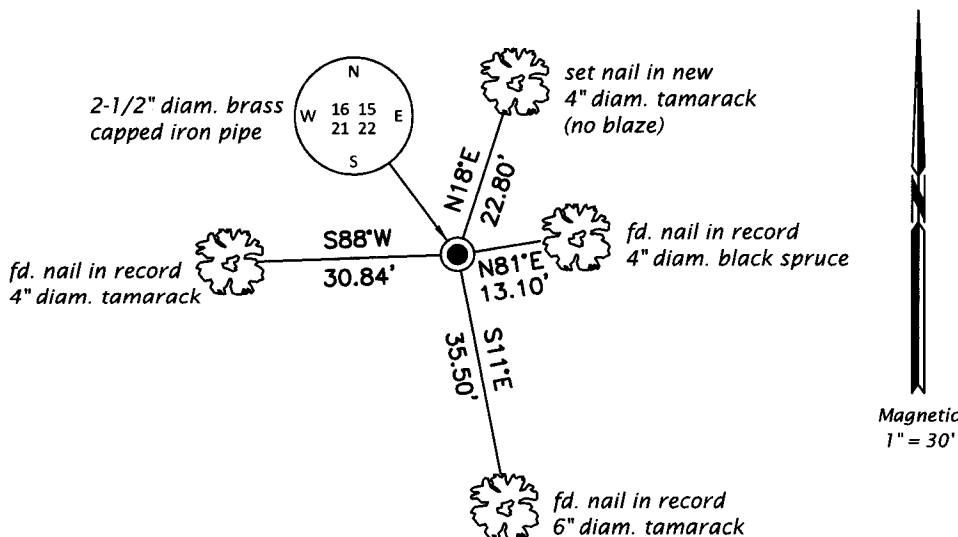
(b)(f)(g)(h) Description of monument found at this corner and if it was accepted, state all evidence (material, testimonial, occupational, plats, records, other monuments) used as a basis for accepting. If not accepted or if nothing was found, state evidence used as basis for establishing location. If re-established through lost corner proportionate methods, indicate all monuments, distances and directions used to establish. Indicate type of monument and sign post found or set.

This is a perpetuation of a previous USPLS Monument Record by Milo E. Stefan, RLS dated May 8, 1995 and filed in the office of the Oneida County Register of Deeds. A complete history of the corner can be found on the previous monument record. I accept the previous location as a true and faithful perpetuation or reestablishment of the original corner location and further perpetuate it as follows.

May 29, 2018: I found and accepted the record monument, a 2-1/2" diam. iron pipe with a 3" diam. brass cap projecting 15" above the bog surface. The record bearing tree at N24°E is standing dead. I found or established accessories as shown below. I found a white vinyl sign post bearing Southwest, 0.8 ft.

The coordinate value shown has been verified by at least one of the following methods: 1) comparison to a previously GPS determined published value; 2) the value is the average of two or more GPS observations at a markedly different time; 3) one or more distances were measured back to the GPS observed corner from temporary GPS observed offset locations.

(c)(d)(e) Plan view of corner with ties to at least 4 witness monuments. If in disagreement with previously established corner, show the distances between the two corners and also indicate the ties to the disputed.

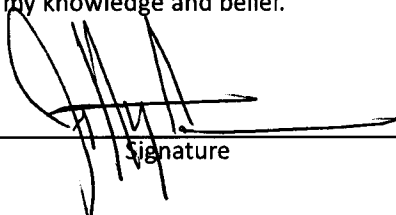


REGISTER OF DEEDS OFFICE
 ONEIDA COUNTY
 FILED

JUN 13 2018

KYLE J. FRANSON
 REGISTER OF DEEDS

(i) I, Jeffrey W. Austin, Professional Land Surveyor No. S-1885, hereby certify that the corner location on this record was determined by me or under my direction and control and that this U.S. Public Land Survey Monument Record is correct and complete to the best of my knowledge and belief.


 Signature

JUNE 4, 2018
 Date