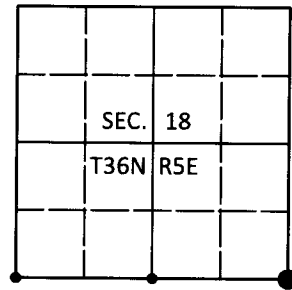


U.S. PUBLIC LAND SURVEY MONUMENT RECORD

Note: This form is intended and designed to fulfill all requirements of Wisconsin Administrative Code, Chapter A-E 7.08 U.S. Public Land Survey Monument Record (3)(a-i).

(a) CORNER LOCATION
 Cor. of Secs. 17, 18, 19 & 20
 Township 36 North
 Range 5 East of the 4th P.M.
 Town of Little Rice
 County of Oneida

WISCRS - Oneida County
 N: 150,655.50 USft
 E: 139,064.80 USft
 Datum: NAD 83(2011)
 GNSS Method: Real-Time Network
 GNSS Control: WISCRS VRS



589°27'28"E 5202.92'
 2562.92' 2640.00'
 (38.80 GLO) (40.00 GLO)

(b) HISTORY OF ORIGINAL CORNER ESTABLISHMENT

Original Surveyor: Joseph Jenkins

Original Accessories:

Date of Survey Commenced: June 1, 1863
 Completed: June 10, 1863

Spruce 5" S17°W, 15 lks.
 Tamarack 5" N18°E, 25 lks.

(b)(f)(g)(h) Description of monument found at this corner and if it was accepted, state all evidence (material, testimonial, occupational, plats, records, other monuments) used as a basis for accepting. If not accepted or if nothing was found, state evidence used as basis for establishing location. If re-established through lost corner proportionate methods, indicate all monuments, distances and directions used to establish. Indicate type of monument and sign post found or set.

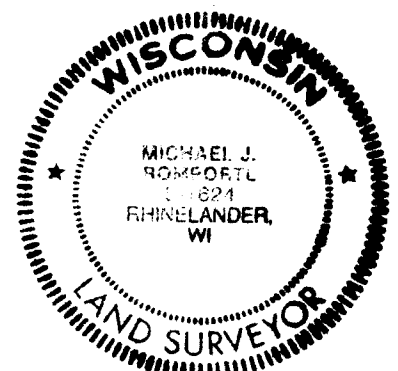
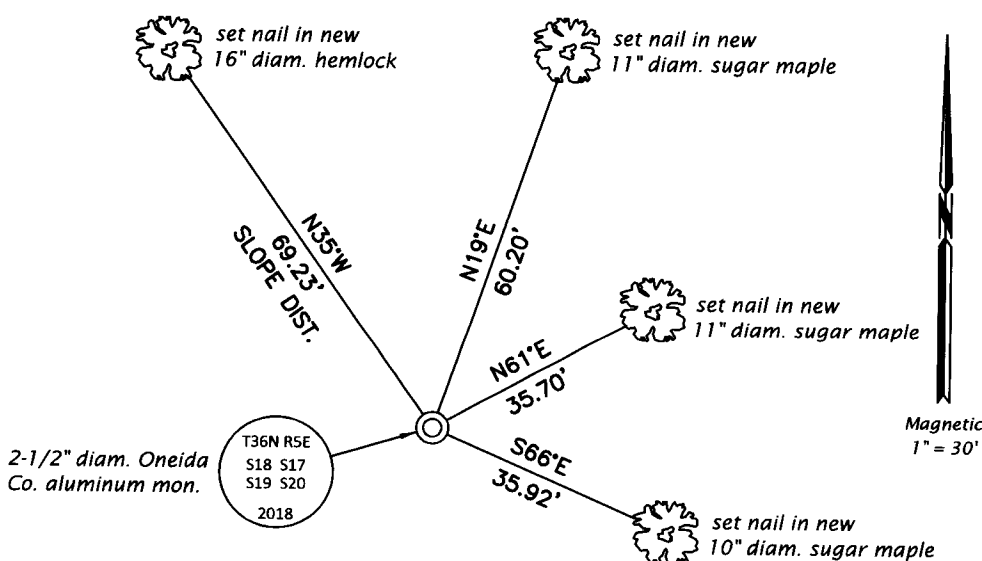
July 26, 1912: Notes by D.H. Vaughan indicate he set a wood post on E-W section line witnessed by a white pine stump 16" N21°E, 32 lks.

May 27, 1957: OCS Map No. C-339 by Genisot Engineering indicates the corner is marked by a wood post witnessed by: birch 8" N12°E, 5.6' and maple 6" S10°W, 8.0'.

May 22, 2018: Jeff Austin visited the corner and searched for evidence of previous surveys or occupation. Finding none, the corner was established by projecting the South line of the SW 1/4, easterly 2640.00' as indicated on the Genisot survey. At the corner point, a 2-1/2" diam., 30" long aluminum pipe with a 3-1/4" diam. Oneida Co. aluminum cap projecting 4" above the ground surface was set. The monument leans due to a buried rock at the corner point. Accessories were established as shown below. A white vinyl sign post was set Southwest 0.9 ft.

The coordinate value shown has been verified by at least one of the following methods: 1) comparison to a previously GPS determined published value; 2) the value is the average of two or more GPS observations at a markedly different time; 3) one or more distances were measured back to the GPS observed corner from temporary GPS observed offset locations.

(c)(d)(e) Plan view of corner with ties to at least 4 witness monuments. If in disagreement with previously established corner, show the distances between the two corners and also indicate the ties to the disputed.



REGISTER OF DEEDS OFFICE
 ONEIDA COUNTY
 FILED

AUG 16 2018

KYLE J. FRANSON
 REGISTER OF DEEDS

(i) I, Michael J. Romportl, Professional Land Surveyor No. S-1624, hereby certify that the corner location on this record was determined by me or under my direction and control and that this U.S. Public Land Survey Monument Record is correct and complete to the best of my knowledge and belief.

Michael J. Romportl
 Signature

7/31/2018
 Date

3605180000 (INDEX NO. N-5)