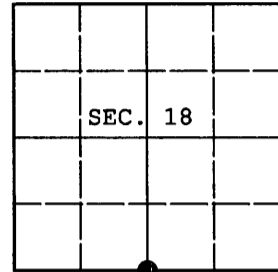


U.S. PUBLIC LAND SURVEY MONUMENT RECORD

Note: This form is intended and designed to fulfill all requirements of Wisconsin Administrative Code, Chapter A-E 7.08 U.S. Public Land Survey Monument Record (3) (a) (b) (c) (d) (e) (f) (g) (h) (i). An additional sheet may be added if necessary to conform with said requirements.

(a) CORNER LOCATION: Oneida County Coordinates
 1/4 Cor. of Secs. 18 & 19 N: 150,680.481 USft
 Township 36 North E: 136,424.923 USft
 Range 5 East of the 4th P.M. Datum: NAD 1983(1991)
 Town of Little Rice County of Oneida



(b) HISTORY OF ORIGINAL CORNER ESTABLISHMENT

Original Surveyor: Joseph Jenkins Original Accessories:
 Date of Survey: Commenced: June 1, 1863 spruce 5" S17°W, 15 lks.
 Completed: June 10, 1863 tamarack 5" N18°E, 25 lks.

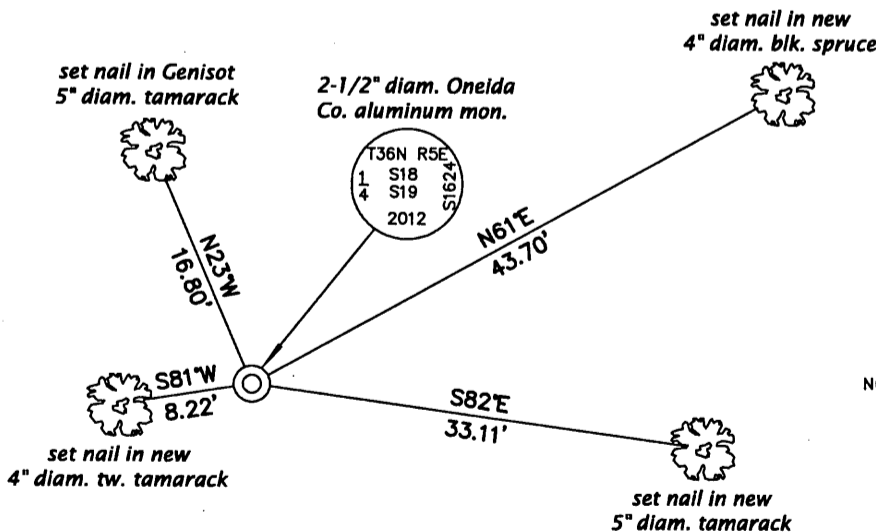
(b) (f) (g) (h) Description of monument found at this corner and if it was accepted, state all evidence (material, testimonial, occupational, plats, records, other monuments) used as a basis for accepting. If not accepted or if nothing was found, state evidence used as basis for establishing location. If re-established through lost corner proportionate methods, indicate all monuments, distances and directions used to establish. Indicate type of monument and sign post found or set.

May 27, 1957: Notes in support of Genisot map #OCS C-339 indicate corner is marked by a wood post and witnessed by: tamarack 6" N27°W, 17.0' and tamarack 6" S87°W, 25.7'.

November 26, 2012: The point of a 3" diam. wood post was recovered and accepted. The NW bearing tree mentioned above was recovered; the SW tree is gone. At the corner point a 2-1/2" diam., 60" long aluminum pipe with 3-1/4" diam. Oneida County aluminum cap was set 6" above the bog surface. Accessories were established as shown below and a white plastic sign post was set Northwest 1 ft. dist.

The coordinates shown were derived from two independent RTK observations of the corner point and are based on the WISCORS network.

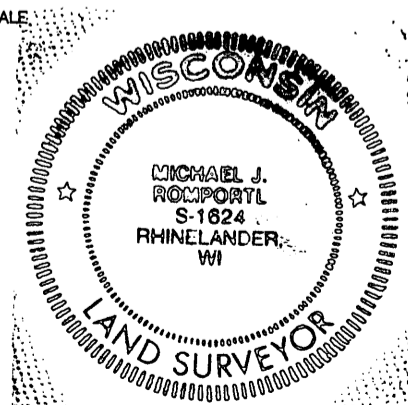
(c) (d) (e) Plan view of corner with ties to at least 4 witness monuments. If in disagreement with previously established corner, show the distances between the two corners and also indicate the ties to the disputed.



REGISTER OF DEEDS OFFICE
 ONEIDA COUNTY
 FILED

APR 15 2013

AT _____ O'CLOCK _____ M
 KYLE J. FRANSON
 REGISTER OF DEEDS



(i) I, Michael J. Romportl, Registered Land Surveyor No. S-1624, hereby certify that the corner location on this record was determined by me or under my direction and control and that this U.S. Public Land Survey Monument Record is correct and complete to the best of my knowledge and belief.

Michael J. Romportl 2/12/2013
 Signature Date