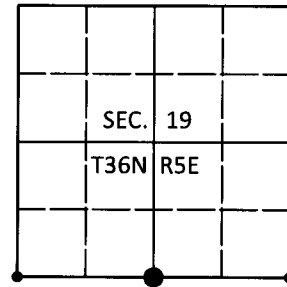


**U.S. PUBLIC LAND SURVEY MONUMENT RECORD**

Note: This form is intended and designed to fulfill all requirements of Wisconsin Administrative Code, Chapter A-E 7.08 U.S. Public Land Survey Monument Record (3)(a-i).

(a) CORNER LOCATION  
 1/4 Cor. of Secs. 19 & 30  
 Township 36 North  
 Range 5 East of the 4th P.M.  
 Town of Little Rice  
 County of Oneida

WISCORS - Oneida County  
 N: 145,376.55 USft  
 E: 136,379.68 USft  
 Datum: NAD 83(2011)  
 GNSS Method: Real-Time Network  
 GNSS Control: WISCORS VRS



589°40'24"E 5240.22'  
 2578.26' 2661.96'  
 (39.30 GLO) (40.00 GLO)

(b) HISTORY OF ORIGINAL CORNER ESTABLISHMENT

Original Surveyor: Joseph Jenkins

Original Accessories:

Date of Survey      Commenced: June 1, 1863  
                                  Completed: June 10, 1863

Birch 10" N36°W, 31 lks.  
 Birch 8" S4°E, 19 lks.

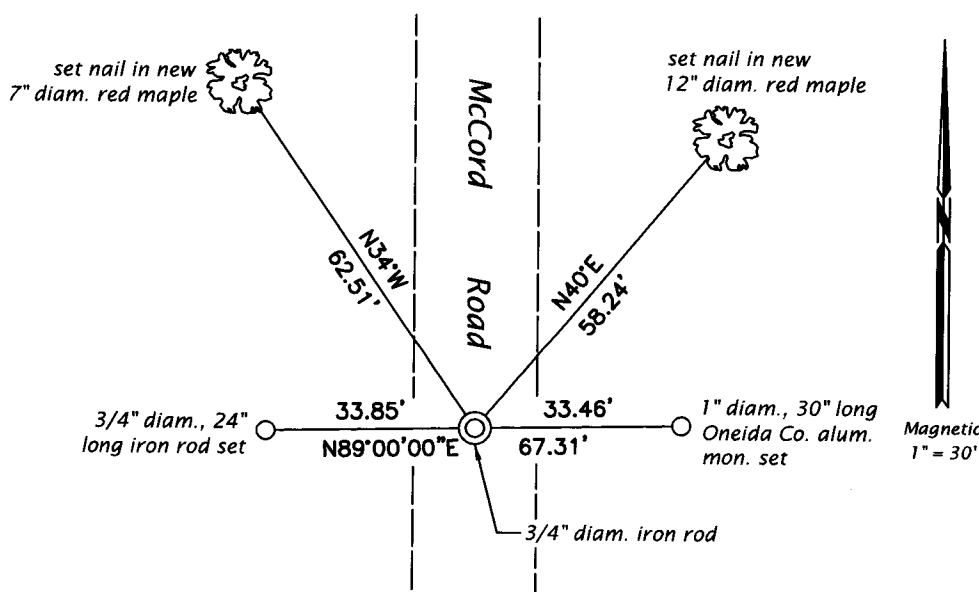
(b)(f)(g)(h) Description of monument found at this corner and if it was accepted, state all evidence (material, testimonial, occupational, plats, records, other monuments) used as a basis for accepting. If not accepted or if nothing was found, state evidence used as basis for establishing location. If re-established through lost corner proportionate methods, indicate all monuments, distances and directions used to establish. Indicate type of monument and sign post found or set.

*July 7, 1913: The Town of Little Rice approved the construction of a road centered on the N-S centerline of section 30.*

*May 21, 2018: Accompanied by Jeff Austin, I visited the corner and searched for evidence of previous surveys or occupation including evidence of downed wire fences on each side of the road. Finding none, I established the corner at the intersection of the section line and the centerline of McCord Road. At the corner point, I set a 3/4" diam., 24" long iron rod buried 6 inches in the roadbed. A steel fence post bears N30°E, 55.7 ft. Accessories were established as shown below. A white vinyl sign post was set adjacent to the West reference monument.*

*The coordinate value shown has been verified by at least one of the following methods: 1) comparison to a previously GPS determined published value; 2) the value is the average of two or more GPS observations at a markedly different time; 3) one or more distances were measured back to the GPS observed corner from temporary GPS observed offset locations.*

(c)(d)(e) Plan view of corner with ties to at least 4 witness monuments. If in disagreement with previously established corner, show the distances between the two corners and also indicate the ties to the disputed.



REGISTER OF DEEDS OFFICE  
 ONEIDA COUNTY  
 FILED

**AUG 16 2018**

**KYLE J. FRANSON**  
 REGISTER OF DEEDS

(i) I, Michael J. Romportl, Professional Land Surveyor No. S-1624, hereby certify that the corner location on this record was determined by me or under my direction and control and that this U.S. Public Land Survey Monument Record is correct and complete to the best of my knowledge and belief.

*Michael J. Romportl*  
 Signature

*7/31/2018*  
 Date