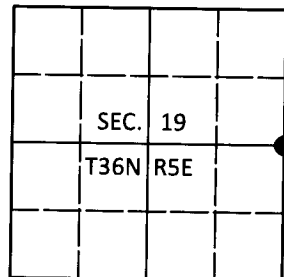


# U.S. PUBLIC LAND SURVEY MONUMENT RECORD

Note: This form is intended and designed to fulfill all requirements of Wisconsin Administrative Code, Chapter A-E 7.08 U.S. Public Land Survey Monument Record (3)(a-i).

(a) CORNER LOCATION  
 1/4 Cor. of Secs. 19 & 20  
 Township 36 North  
 Range 5 East of the 4th P.M.  
 Town of Little Rice  
 County of Oneida

WISCRS - Oneida County  
 N: 148,027.52 USft  
 E: 139,032.31 USft  
 Datum: NAD 83(2011)  
 GNSS Method: Real-Time Network  
 GNSS Control: WISCORS VRS



(b) HISTORY OF ORIGINAL CORNER ESTABLISHMENT

Original Surveyor: Joseph Jenkins

Original Accessories:

Date of Survey      Commenced: June 1, 1863      Sugar 8" S44°W, 12 lks.  
                                  Completed: June 10, 1863      Sugar 8" S14°E, 28 lks.

(b)(f)(g)(h) Description of monument found at this corner and if it was accepted, state all evidence (material, testimonial, occupational, plats, records, other monuments) used as a basis for accepting. If not accepted or if nothing was found, state evidence used as basis for establishing location. If re-established through lost corner proportionate methods, indicate all monuments, distances and directions used to establish. Indicate type of monument and sign post found or set.

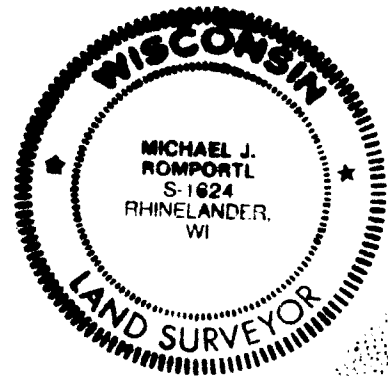
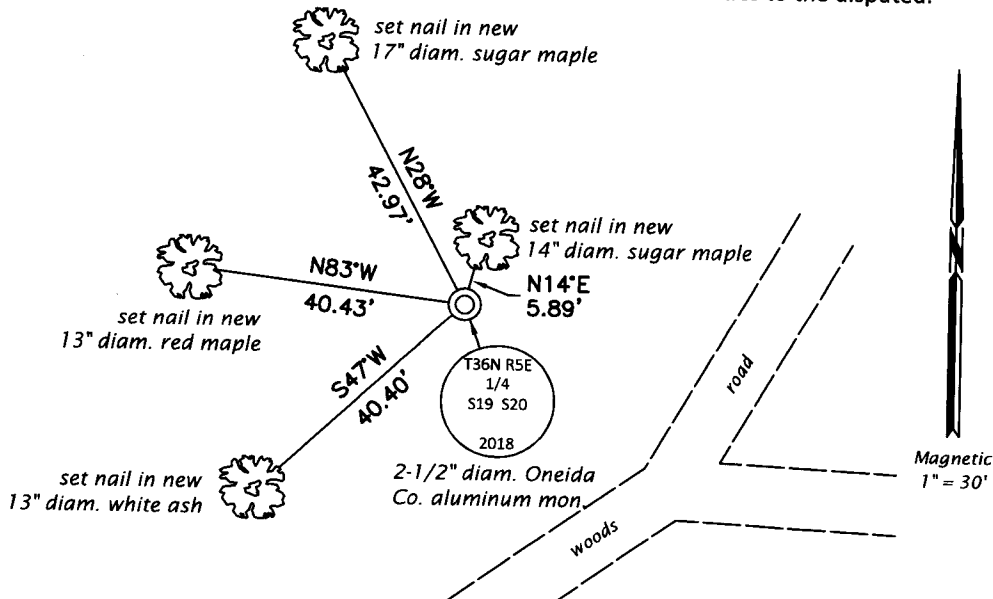
*July 26, 1912: Notes by D.H. Vaughan indicate he found the Southwest GLO sugar maple but not the other tree. As the corner fell in a hemlock, he cut a notch in the tree with the following witness: y. birch 24" N86-1/2°W, 31-1/2 lks.*

*May 21, 2018: To establish this corner, the Vaughan random line directions, distances and fallings were computed, rotated and scaled between the Southeast cor. of Sec. 30 and the Northeast cor. of Sec. 19. The distance derived from Vaughan's unadjusted work differs from that measured today by less than 5 ft. in the two miles. Search locations were computed for the following Vaughan corners: East 1/4 cor. Sec. 30, Northeast cor. Sec. 30, East 1/4 cor. Sec. 19. Romportl and Austin performed a thorough field search for evidence of these corners and found nothing. The proposed reconstruction of Vaughan's work can be supported by the following. The character of the topography at the East 1/4 of Sec. 30 supports the computed location as moving West even a short distance would result in an upland situation that would not support the cedar bearing trees by GLO and Vaughan. Although no evidence was found at the North 1/4 cor. of Sec. 30, the centerline of McCord Road is very close to the East/West proportionate location of the lost corner. There is no evidence that a road was ever built to the north of the SE corner of section 30 as it appears that was the purpose of the Vaughan survey. However, McCord Rd runs straight from near the S 1/4 of 30 north to the CS 1/16 Sec 19 and while no survey notes were found to run the N-S 1/4 line it is possible that the Town had Vaughan run that line for the construction of the road.*

*At the corner point, a 2-1/2" diam., 30" long aluminum pipe with a 3-1/4" diam. Oneida Co. aluminum cap projecting 6" above the ground surface was set. The monument falls in a decayed stump. Accessories were established as shown below. A white vinyl sign post was set Southeast, 0.5 ft.*

*The coordinate value shown has been verified by at least one of the following methods: 1) comparison to a previously GPS determined published value; 2) the value is the average of two or more GPS observations at a markedly different time; 3) one or more distances were measured back to the GPS observed corner from temporary GPS observed offset locations.*

(c)(d)(e) Plan view of corner with ties to at least 4 witness monuments. If in disagreement with previously established corner, show the distances between the two corners and also indicate the ties to the disputed.



REGISTER OF DEEDS OFFICE  
 ONEIDA COUNTY  
 FILED

**AUG 16 2018**

KYLE J. FRANSON  
 REGISTER OF DEEDS

Michael J. Romportl      7/31/2018  
 Signature      Date