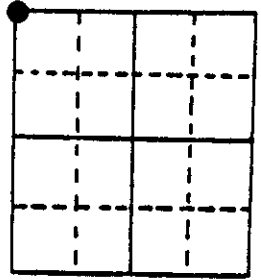


# U.S. PUBLIC LAND SURVEY MONUMENT RECORD

**Note:** This form is intended and designed to fulfill all requirements of Wisconsin Administrative Code, Chapter A-E 7.08 U.S. Public Land Survey Monument Record (3) (a) (b) (c) (d) (e) (f) (g) (h) (i). An additional sheet may be added if necessary to conform with said requirements.

(a) Corner location: Township 36 North  
 Range 5 East/West

Town/City/Village Little Rice  
 County Oneida



Section 25

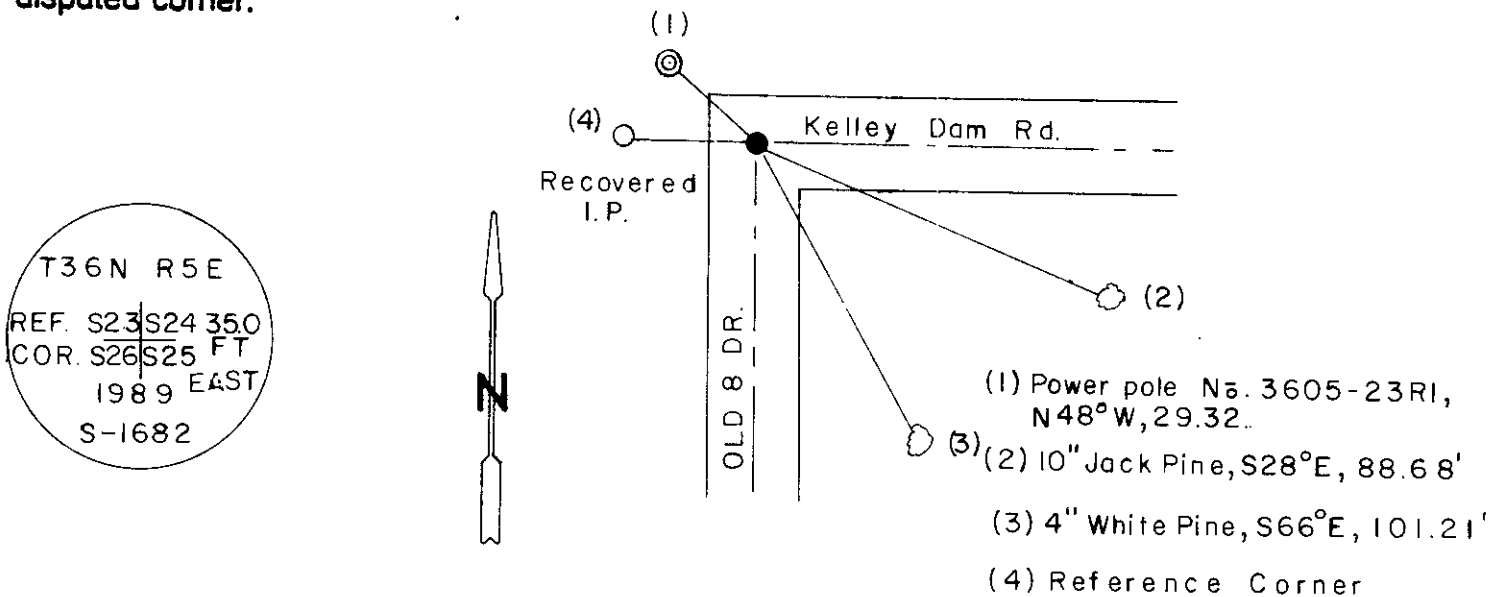
(b) (f) (g) (h) Description of monument found at this corner and if it was accepted, state all evidence (material, testimonial, occupational, plats, records, other monuments) used as a basis for accepting. If not accepted or if nothing was found, state evidence used as basis for establishing location. If reestablished through lost corner proportionate methods, indicate all monuments, distances and directions used to establish. Indicate type of monument found or set and sign post.

Recovered a 2-1/2" iron pipe with nail in center, 4" below road surface. Iron pipe sets in the intersection of Old 8 Drive and Kelly Dam Road.

Position has been used in prior surveys of Section 25. Left iron pipe as found.

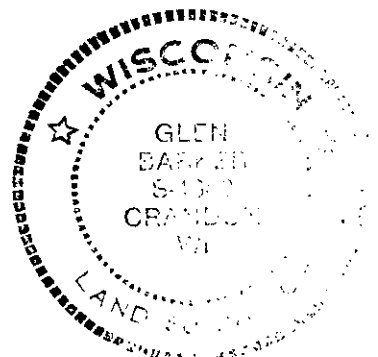
Set a 2-1/4" Oneida County aluminum monument for reference corner 35.0' west.

(c) (d) (e) Plan view of corner with ties to at least 4 witness monuments. If in disagreement with previously established corner, show the distances between the two corners and also indicate the ties to the disputed corner.



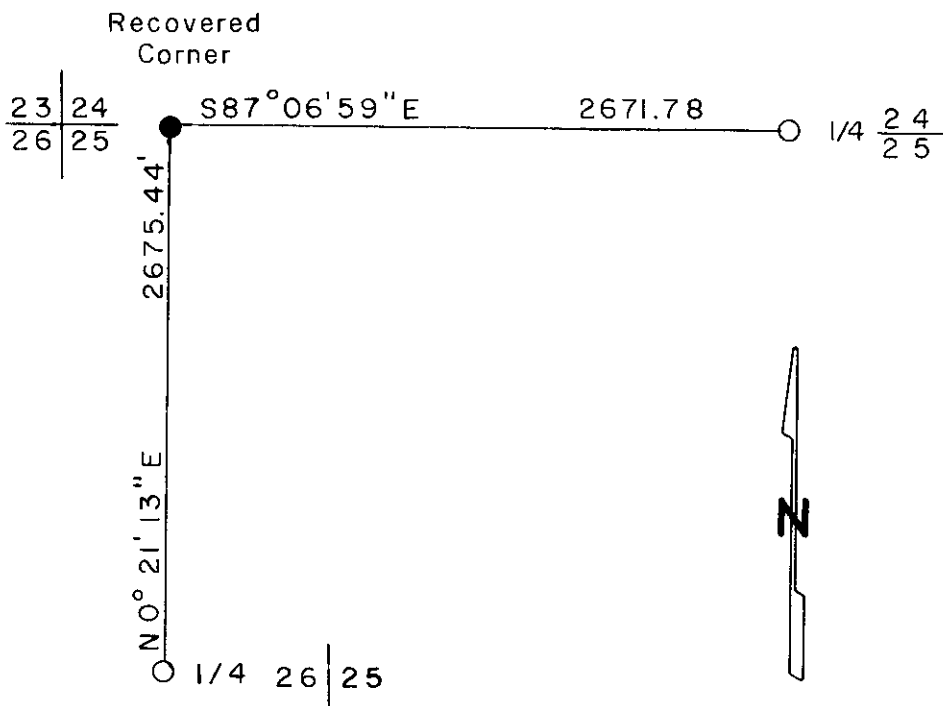
(i) I, Glen Barker  
 (type or print name) certify that the corner location on this record was determined by me or under my direction and control and that this U.S. Public Land Survey Monument Record is correct and complete to the best of my knowledge and belief.

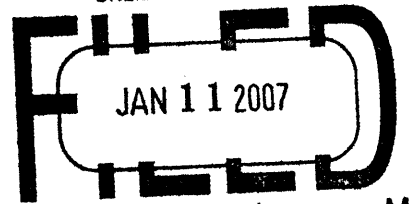
Glen Barker 12/22/89  
 Signature Date



Index No. R-21

3605230000





At \_\_\_\_\_ O'Clock \_\_\_\_\_ M  
**THOMAS H. LEIGHTON**  
REGISTER OF DEEDS  
Recorders Data

This form is intended to fulfill the requirements of Chapter A-E7.08 (3)(a) thru (i) U.S. Public Land Survey Monument Location Record, Wisconsin Administrative Code. Use the reverse side of form for continuation.

**U.S. PUBLIC LAND SURVEY MONUMENT LOCATION RECORD**

USPLS CORNER: NW SECTION: 25 TOWNSHIP: 36 NORTH RANGE: 05 EAST

NAME OF WATERWAY FOR M.C. CORNER : N/A SECTION LINE: N/A

(CITY)(VILLAGE)(TOWN) OF: LITTLE RICE COUNTY OF: ONEIDA

Description of monument found or placed and all other evidence used as the basis for monument location; including monuments and measurements required if the corner location was reestablished by lost corner proportionate methods. Also indicate name of the original surveyor, original survey date and the corner monument, bearing trees, witness or other reference monuments established, including measured bearing and distance ties, from available survey records.

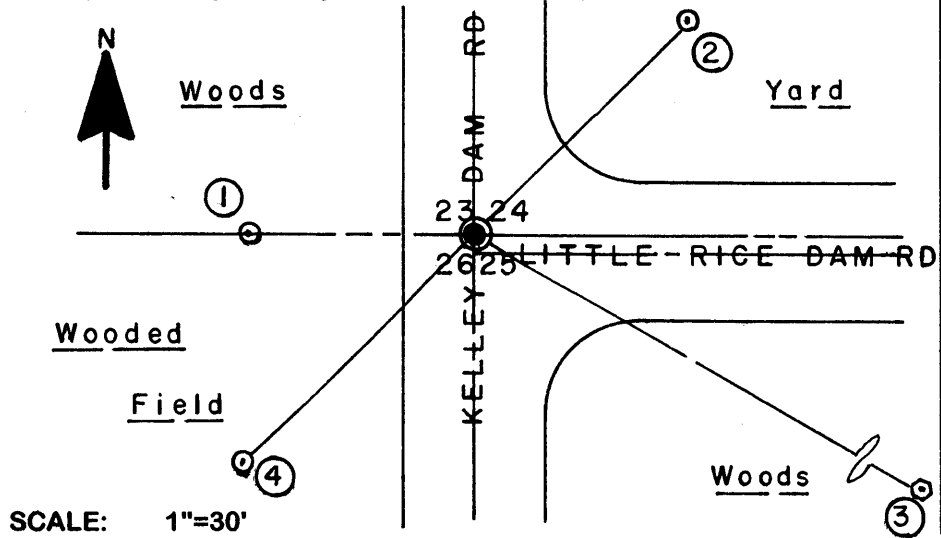
THIS CORNER REREFERENCED AS ONLY TWO(2) RECORD WITNESSES SATISFACTORY FOR PERPETUATION USAGE.

In June 1863, Joseph H. Jenkins/GLO set a wood post as the original corner and noted OBTs: a 14" Pr N08°W 75 links and a 12" Pr S78°W 52 links; all are now obliterated.

On a U.S. Public Land Survey Monument Record dated December 20, 1989 and filed in Oneida County records, Glen Barker/RLS 1682 found and accepted a 2.5" dia. iron pipe per previous surveys 4" below road surface at this section corner and noted following as new witnesses: Power Pole No. 3605-23 N48°W 29.32', found OK; a 4" Pw S66°E 101" +/-, now a 4" high rotted stump; a 10" Pj S28°E 88.6'+/-, now broken off and fallen to the NE with lower blaze open on rotted stump face; and a standard aluminum monument with stamped Oneida County cap 35.0' West, found OK and used for new tie shown below; the new rebar witness monuments were set with transit on a right line thru pin center at the corner.

On June 16, 2006, I found an older PK nail with washer flush in blacktop pavement at this corner per remaining record ties. I pulled the old 3/16" dia. x 1" long PK nail with washer and reset with a 1/2" dia. x 4.5" long tapered stainless steel cotton gin pin with geared top flush with blacktop pavement for new ties shown below. Prior to driving the pin, I detected a very strong magnetic locator reading below the pavement at corner position; undoubtedly indicating the older iron pipe found previously by Barker. There were no direct witnesses.

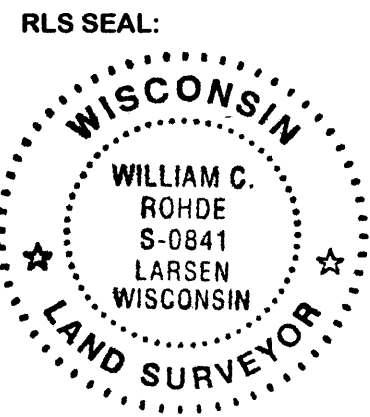
Plan view map of monument location with bearing and distance ties to a minimum of four(4) described witness or reference monuments of concrete, natural stone, iron, live bearing trees or equivalent material. If applicable, also show a minimum of two(2) bearing and distance ties to any other monument found and not accepted; including the bearing and distance from the accepted monument.



- WITNESS MONUMENT TIES:**
- ① Standard aluminum monument with stamped Oneida County cap West 35.00'.
  - ② Set a 5/8" dia. x 24" long rebar with yellow poly Reference Mark cap flush N45°E 47.75'.
  - ③ New 12" Pw BT S60°E 101.18'.
  - ④ Set a 5/8" dia. x 24" long rebar with yellow poly Reference Mark cap 1" up S45°W 50.35'.
- Found a standard white poly 'T' marker post 13" West of Witness Monument #1.

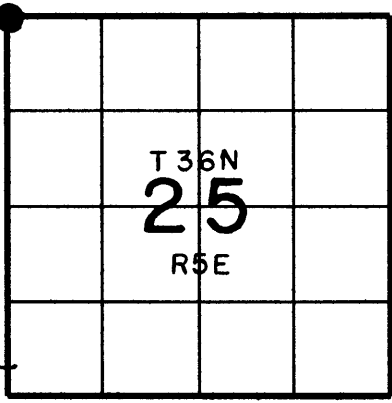
SCALE: 1"=30'

Unless otherwise indicated, all bearing tree ties are to a .25" dia. by 2.5" long PK nail with a 1.25" dia. steel washer driven into unblazed right face and a .25" dia. by 2.5" long PK nail with a 2" dia. steel washer stamped BT is also driven into unblazed face of bearing tree at DBH; the basis for measured bearings is by compass to nearest degree and all tie distances are measured horizontal by steel tape corrected to nearest 1/100th feet at standard temperature of 68° F.



**LAND SURVEYOR CERTIFICATE:**  
I, William C. Rohde, hereby certify that I am duly licensed as a Professional Land Surveyor in the State of Wisconsin; that this USPLS monument location was determined by me and/or under my direct supervision and control; and that this U.S. Public Land Survey Monument Location Record is true and correct to the best of my knowledge and belief.

Signed: *William C. Rohde*  
William C. Rohde RLS 841



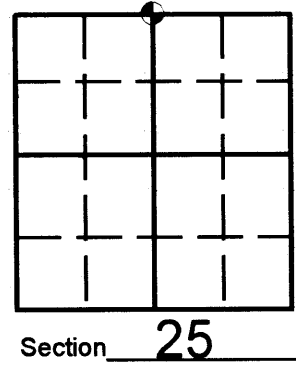
# U.S. PUBLIC LAND SURVEY MONUMENT RECORD

Note: This form is intended and designed to fulfill all requirements of Wisconsin Administrative Code, Chapter A-E 7.08 U.S. Public Land Survey Monument Record (3)(a)(b)(c)(d)(e)(f)(g)(h)(i). An additional sheet may be added if necessary to conform with said requirements.

(a) Corner location: Township 36 North  
 Range 05 East/West

Town/City/Village LITTLE RICE  
 County ONEIDA

REGISTER OF DEEDS OFFICE  
 ONEIDA COUNTY, WIS.  
**FILED**  
 JAN 16 2009  
 At \_\_\_\_\_ O'Clock \_\_\_\_\_ M  
**THOMAS H. LEIGHTON**  
 REGISTER OF DEEDS



b) (f) (g) (h) Description of monument found at this corner and if it was accepted, state all evidence (material, testimonial, occupational, plats, records, other monuments) used as a basis for accepting. If not accepted or if nothing was found, state evidence used as basis for establishing location. If reestablished through lost corner proportionate methods, indicate all monuments, distances and directions used to establish. Indicate type of monument found or set and sign post.

### POST-CONSTRUCTION

See U.S. Public Land Survey Monument Record Form R-23 for history of corner

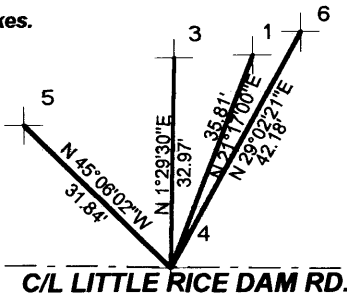
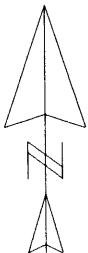
-JULY- 2008 Kevin Bixby found mag. pull and witnessed as shown below

-DECEMBER 2008- Kevin Bixby set masonry nail and witnessed as shown below.

(c) (d) (e) Plan view of corner with ties to at least 4 witness monuments. If in disagreement with previously established corner, show the distances between the two corners and also indicate the ties to the disputed corner.

Angles and distances measured with total station. Said distances and angles measured to heads of spikes.

SCALE: 1" = 30'

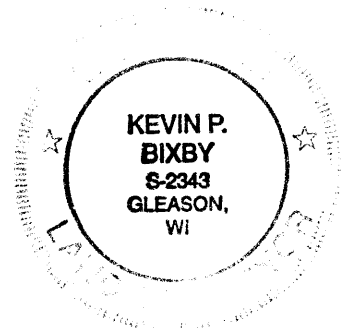


#### LEGEND

- 1- EXISTING 3/4" X 24" IRON PIPE
- 3- EXISTING ONEIDA COUNTY WITNESS MONUMENT
- 4- SET MASONARY NAIL
- 5- EXISTING 60D SPIKE IN EXISTING 13" REDPINE B.T.
- 6- EXISTING 60D SPIKE IN EXISTING 16" JACK PINE B.T.

(i) I, KEVIN P. BIXBY

(type or print name) certify that the corner location on this record was determined by me or under my direction and control and that this U.S. Public Land Survey Monument Record is correct and complete to the best of my knowledge and belief.



Kevin P. Bixby  
 Signature

12/08/08  
 Date 3605 230020

Stamp

Index No. R-23