

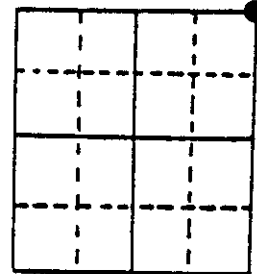
U.S. PUBLIC LAND SURVEY MONUMENT RECORD

Note: This form is intended and designed to fulfill all requirements of Wisconsin Administrative Code, Chapter A-E 7.08 U.S. Public Land Survey Monument Record (3) (a) (b) (c) (d) (e) (f) (g) (h) (i). An additional sheet may be added if necessary to conform with said requirements.

(a) Corner location: Township 36 North
 Range 5 & 6 East/West

Town/City/Village Little Rice

County Oneida



Section 25

(b) (f) (g) (h) Description of monument found at this corner and if it was accepted, state all evidence (material, testimonial, occupational, plats, records, other monuments) used as a basis for accepting. If not accepted or if nothing was found, state evidence used as basis for establishing location. If reestablished through lost corner proportionate methods, indicate all monuments, distances and directions used to establish. Indicate type of monument found or set and sign post.

A 2" iron pipe in center line of County Highway "Y" 3" below road surface was recovered in 1982 on made reference to.

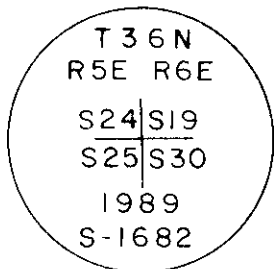
Iron pipe was pulled out of its position when resurfacing County Highway "Y".

Reestablished position from reference ties and recorded survey maps of Section 25, substantiates distance south to quarter section corner and west to quarter section corner.

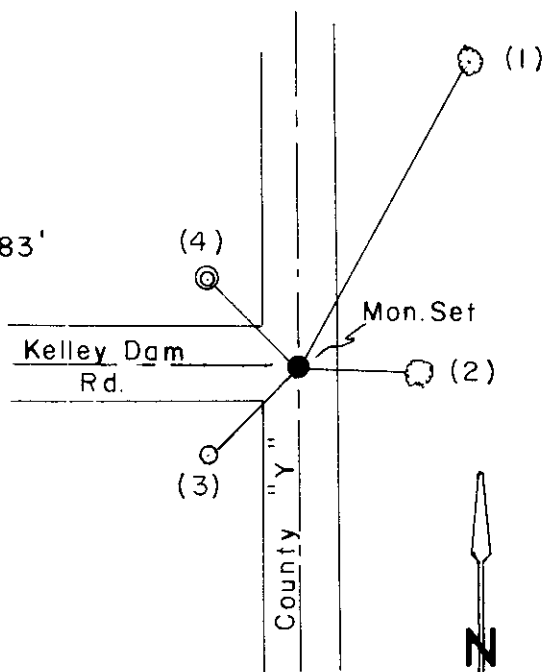
Set a 2-1/4" Oneida County aluminum monument with 3-1/4" alloy cap 4" below road surface.

(c) (d) (e) Plan view of corner with ties to at least 4 witness monuments. If in disagreement with previously established corner, show the distances between the two corners and also indicate the ties to the disputed corner.

Monument Set

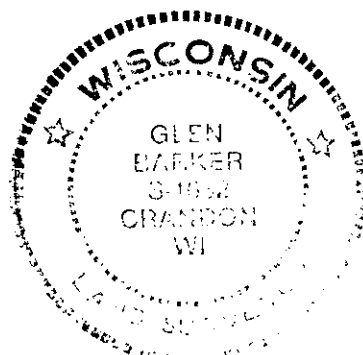


- (1) 4" Tamarack, N29°E, 90.13'
- (2) 5" Black Spruce, S87°E, 32.83'
- (3) 1" I.P., S45°W, 32.32'
- (4) Cut off Power Pole with spike, N47°W, 33.39'



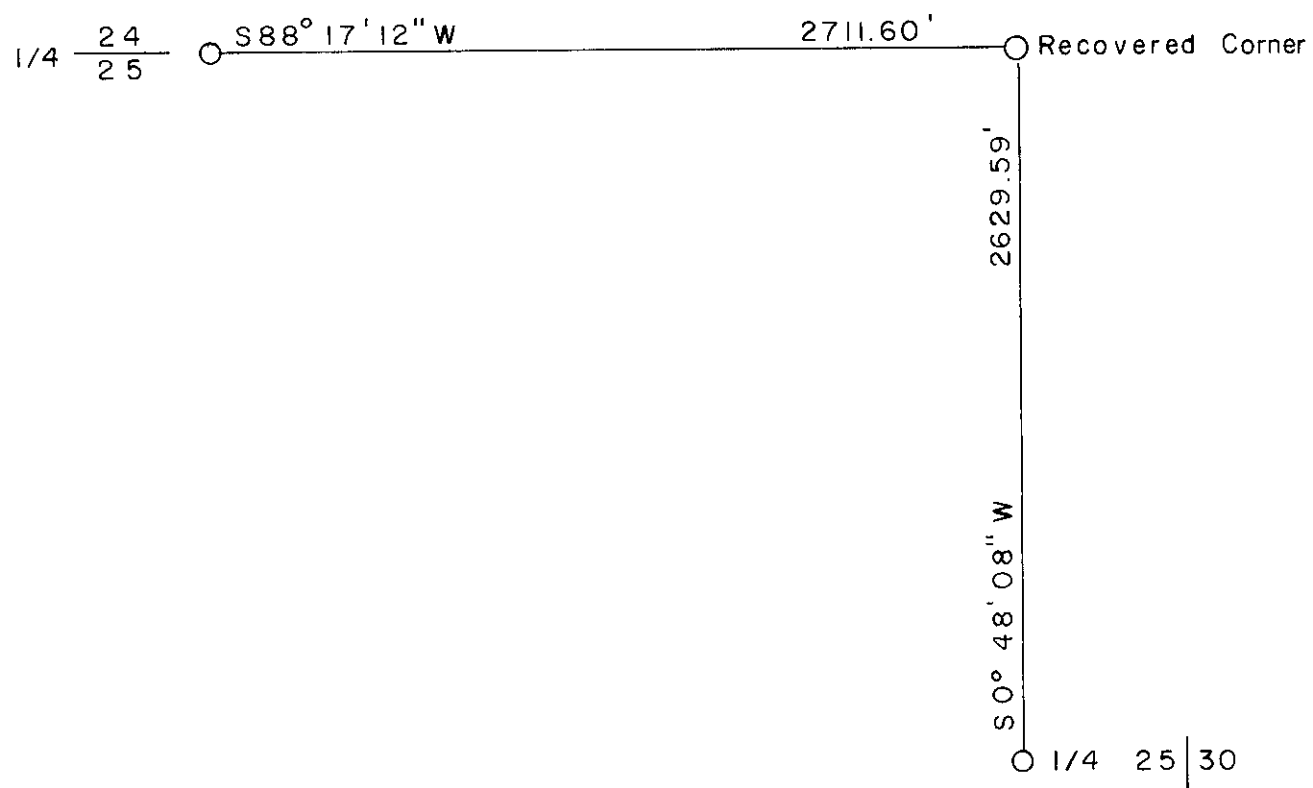
(i) I, Glen Barker
 (type or print name) certify that the corner location on this record was determined by me or under my direction and control and that this U.S. Public Land Survey Monument Record is correct and complete to the best of my knowledge and belief.

Glen Barker 12/22/89
 Signature Date



Index No. R-25

3605240000

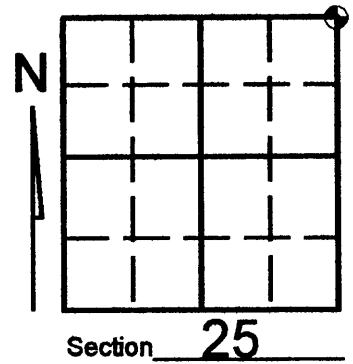


U.S. PUBLIC LAND SURVEY MONUMENT RECORD

Note: This form is intended and designed to fulfill all requirements of Wisconsin Administrative Code, Chapter A-E 7.08 U.S. Public Land Survey Monument Record (3)(a)(b)(c)(d)(e)(f)(g)(h)(i). An additional sheet may be added if necessary to conform with said requirements.

(a) Corner location: Township 36 North
Range 05 East/West

Town/City/Village LITTLE RICE
County ONEIDA



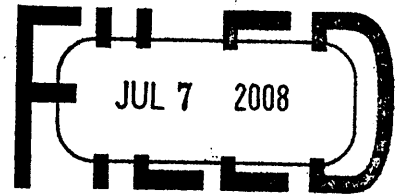
(b) (f) (g) (h) Description of monument found at this corner and if it was accepted, state all evidence (material, testimonial, occupational, plats, records, other monuments) used as a basis for accepting. If not accepted or if nothing was found, state evidence used as basis for establishing location. If reestablished through lost corner proportionate methods, indicate all monuments, distances and directions used to establish. Indicate type of monument found or set and sign post.

PRE-CONSTRUCTION

See U.S. Public Land Survey Monument Record Form R-25 for history of corner

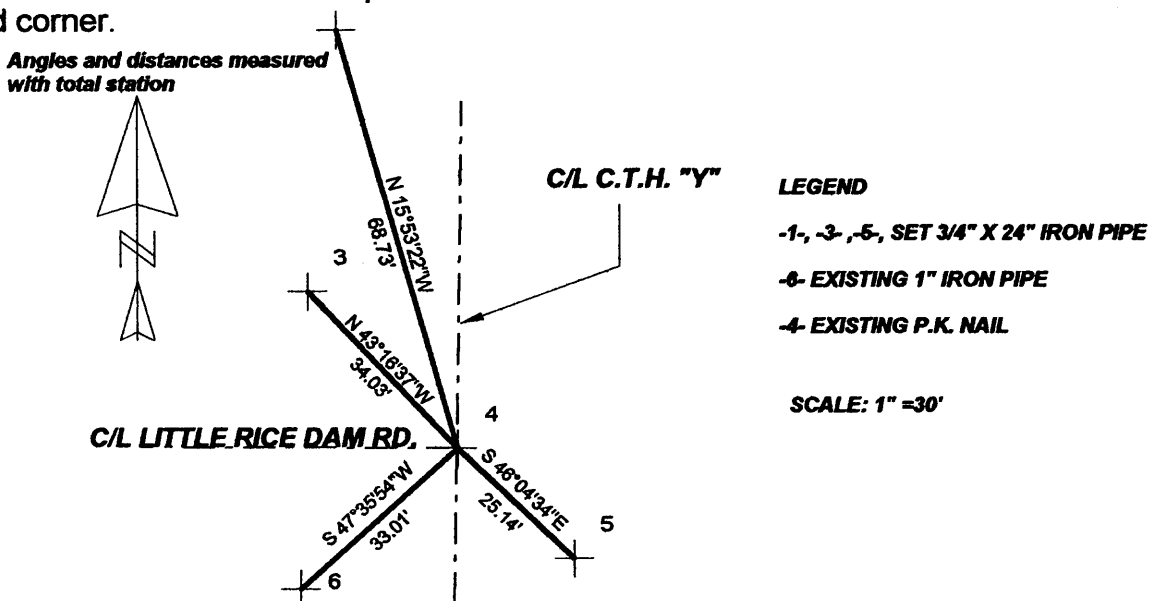
-JULY- 2008 Kevin Bixby found a P.K. nail and witnessed as shown below

REGISTER OF DEEDS OFFICE
ONEIDA COUNTY, WIS.



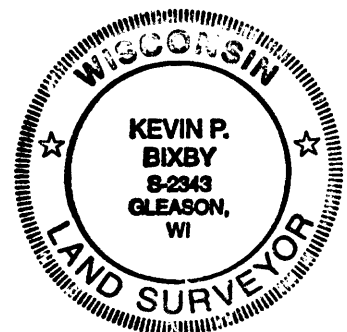
At _____ O'Clock _____ M
THOMAS H. LEIGHTON
REGISTER OF DEEDS

(c) (d) (e) Plan view of corner with ties to at least 4 witness monuments. If in disagreement with previously established corner, show the distances between the two corners and also indicate the ties to the disputed corner.



(i) I, KEVIN P. BIXBY

(type or print name) certify that the corner location on this record was determined by me or under my direction and control and that this U.S. Public Land Survey Monument Record is correct and complete to the best of my knowledge and belief.



Index No. R-25

Kevin P. Bixby
Signature Date 07/06/08
3605240000

Stamp

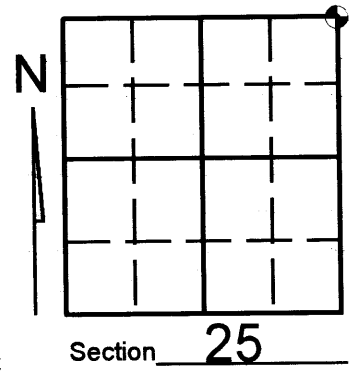
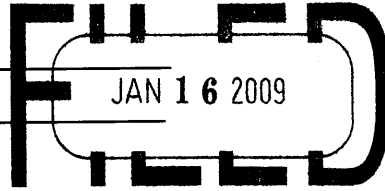
U.S. PUBLIC LAND SURVEY MONUMENT RECORD

Note: This form is intended and designed to fulfill all requirements of Wisconsin Administrative Code, Chapter A-E 7.08 U.S. Public Land Survey Monument Record (3)(a)(b)(c)(d)(e)(f)(g)(h)(i). An additional sheet may be added if necessary to conform with said requirements.

(a) Corner location: Township 36 North
 Range 05 East/West

Town/City/Village LITTLE RICE
 County ONEIDA

REGISTER OF DEEDS OFFICE
 ONEIDA COUNTY, WIS.



At _____ O'Clock _____ M
THOMAS H. LEIGHTON
 REGISTER OF DEEDS

(b) (f) (g) (h) Description of monument found at this corner and if it was accepted, state all evidence (material, testimonial, occupational, plats, records, other monuments) used as a basis for accepting. If not accepted or if nothing was found, state evidence used as basis for establishing location. If reestablished through lost corner proportionate methods, indicate all monuments, distances and directions used to establish. Indicate type of monument found or set and sign post.

POST-CONSTRUCTION

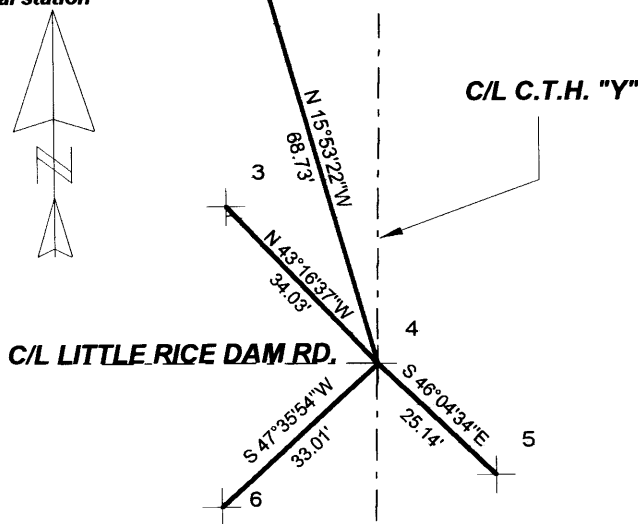
See U.S. Public Land Survey Monument Record Form R-25 for history of corner

-JULY- 2008 Kevin Bixby found a P.K. nail and witnessed as shown below

-DECEMBER- 2008 Kevin Bixby found P.K. & witnesses not disturbed

(c) (d) (e) Plan view of corner with ties to at least 4 witness monuments. If in disagreement with previously established corner, show the distances between the two corners and also indicate the ties to the disputed corner.

Angles and distances measured with total station



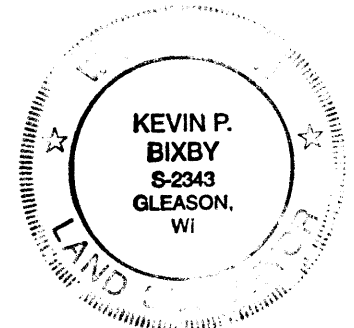
LEGEND

- 1-, -3-, -5-, EXISTING 3/4" IRON PIPE
- 6- EXISTING 1" IRON PIPE
- 4- EXISTING P.K. NAIL

SCALE: 1" = 30'

(i) I, KEVIN P. BIXBY

(type or print name) certify that the corner location on this record was determined by me or under my direction and control and that this U.S. Public Land Survey Monument Record is correct and complete to the best of my knowledge and belief.



Index No. R-25

Kevin P. Bixby
 Signature

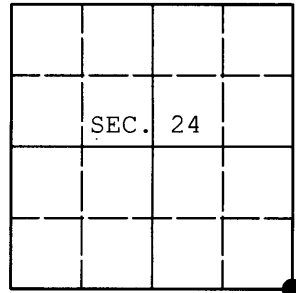
12/08/08
 Date 3605240000

Stamp

U.S. PUBLIC LAND SURVEY MONUMENT RECORD

Note: This form is intended and designed to fulfill all requirements of Wisconsin Administrative Code, Chapter A-E 7.08 U.S. Public Land Survey Monument Record (3) (a) (b) (c) (d) (e) (f) (g) (h) (i). An additional sheet may be added if necessary to conform with said requirements.

(a) CORNER LOCATION: WISCORS - Oneida County
 Cor. of Secs. 19, 24, 25 & 30 N: 145,382.15 USft
 Township 36 North E: 165,625.11 USft
 Range 5 & 6 East of the 4th P.M. Datum: NAD 1983(2011)
 Town of Little Rice & Nokomis County of Oneida



(b) HISTORY OF ORIGINAL CORNER ESTABLISHMENT

Original Surveyor: Original Accessories:
 Date of Survey: Commenced:
 Completed:

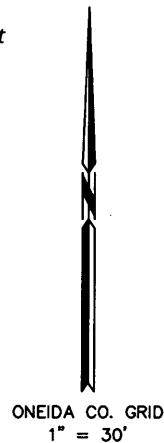
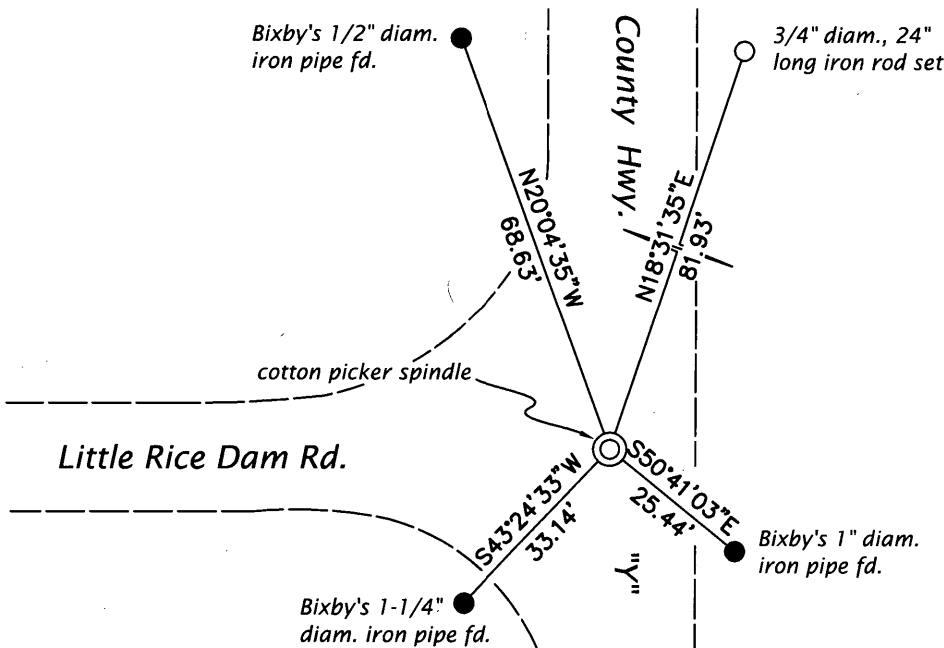
(b) (f) (g) (h) Description of monument found at this corner and if it was accepted, state all evidence (material, testimonial, occupational, plats, records, other monuments) used as a basis for accepting. If not accepted or if nothing was found, state evidence used as basis for establishing location. If re-established through lost corner proportionate methods, indicate all monuments, distances and directions used to establish. Indicate type of monument and sign post found or set.

This is a perpetuation of a previous USPLS Monument Record by Kevin P. Bixby, RLS dated December 8, 2008 and filed in the office of the Oneida County Register of Deeds. A complete history of the corner can be found on the previous monument record. I accept the previous location as a true and faithful perpetuation or reestablishment of the original corner location and further perpetuate it as follows.

June 18, 2013: Prior to road construction, I found and accepted the record monument, a PK nail in the intersection of County Highway Y and Little Rice Dam Road. I performed a GPS observation referenced to the WISCORS GNSS Network. I found or established accessories as shown below.

August 2, 2015: Following road construction, I returned and set a cotton picker spindle at the corner point from the reference monuments established previously. I performed a second GPS observation referenced to the WISCORS GNSS Network. The coordinates shown are the mean of the two observations that differed by 0.04 ft.

(c) (d) (e) Plan view of corner with ties to at least 4 witness monuments. If in disagreement with previously established corner, show the distances between the two corners and also indicate the ties to the disputed.

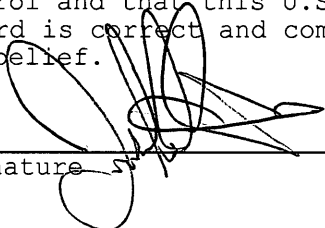


REGISTER OF DEEDS OFFICE
 ONEIDA COUNTY
 FILED

FEB 08 2016

AT _____ O'CLOCK _____ M
 KYLE J. FRANSON
 REGISTER OF DEEDS

(i) I, Jeffrey W. Austin, Professional Land Surveyor No. S-1885, hereby certify that the corner location on this record was determined by me or under my direction and control and that this U.S. Public Land Survey Monument Record is correct and complete to the best of my knowledge and belief.

Signature  Date JAN. 14, 2016