

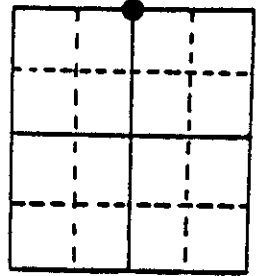
U.S. PUBLIC LAND SURVEY MONUMENT RECORD

Note: This form is intended and designed to fulfill all requirements of Wisconsin Administrative Code, Chapter A-E 7.08 U.S. Public Land Survey Monument Record (3) (a) (b) (c) (d) (e) (f) (g) (h) (i). An additional sheet may be added if necessary to conform with said requirements.

(a) Corner location: Township 36 North
 Range 5 East/West

Town/City/Village Little Rice

County Oneida



Section 25

(b) (f) (g) (h) Description of monument found at this corner and if it was accepted, state all evidence (material, testimonial, occupational, plats, records, other monuments) used as a basis for accepting. If not accepted or if nothing was found, state evidence used as basis for establishing location. If reestablished through lost corner proportionate methods, indicate all monuments, distances and directions used to establish. Indicate type of monument found or set and sign post.

Recovered a 2-1/2" iron pipe in center line of Kelley Dam Road flush with road surface. Also a old location post and tag identifying Quarter Section Corner 24.0' south

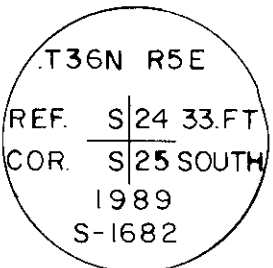
Position has been used in prior surveys.

Left iron pipe as found.

Set a 2-1/4" Oneida County aluminum monument with 3-1/4" alloy cap for reference corner 33.0' north.

(c) (d) (e) Plan view of corner with ties to at least 4 witness monuments. If in disagreement with previously established corner, show the distances between the two corners and also indicate the ties to the disputed corner.

Reference Corner

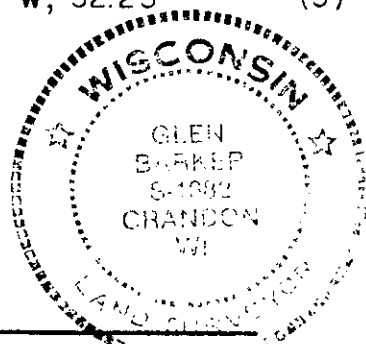
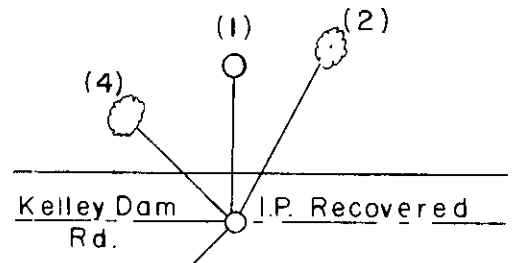


(1) Reference Monument

(2) Old B.T.
11" Jack Pine, N27°E, 41.91'

(3) Power Pole No. 3605- 25W4,
S45°W, 47.63'

(4) 6" Red Pine, N47°W, 32.23'



(i) I, Glen Barker
 (type or print name) certify that the corner location on this record was determined by me or under my direction and control and that this U.S. Public Land Survey Monument Record is correct and complete to the best of my knowledge and belief.

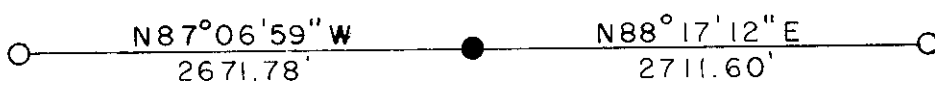
Glen Barker Signature 12/22/89 Date

Index No. R-233

3605240020

Recovered 1/4 Cor.

$\frac{23}{26} | \frac{24}{25}$



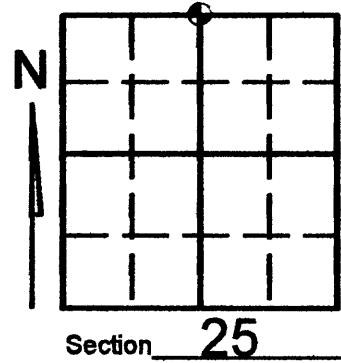
$\frac{24}{25} | \frac{19}{30}$

U.S. PUBLIC LAND SURVEY MONUMENT RECORD

Note: This form is intended and designed to fulfill all requirements of Wisconsin Administrative Code, Chapter A-E 7.08 U.S. Public Land Survey Monument Record (3)(a)(b)(c)(d)(e)(f)(g)(h)(i). An additional sheet may be added if necessary to conform with said requirements.

(a) Corner location: Township 36 North
Range 05 East/West

Town/City/Village LITTLE RICE
County ONEIDA



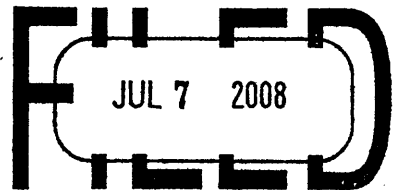
(b) (f) (g) (h) Description of monument found at this corner and if it was accepted, state all evidence (material, testimonial, occupational, plats, records, other monuments) used as a basis for accepting. If not accepted or if nothing was found, state evidence used as basis for establishing location. If reestablished through lost corner proportionate methods, indicate all monuments, distances and directions used to establish. Indicate type of monument found or set and sign post.

PRE-CONSTRUCTION

See U.S. Public Land Survey Monument Record Form R-23 for history of corner

-JULY- 2008 Kevin Bixby found mag. pull and witnessed as shown below

REGISTER OF DEEDS OFFICE
ONEIDA COUNTY, WIS.

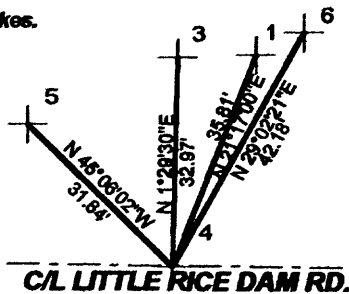


At _____ O'Clock _____ M
THOMAS H. LEIGHTON
REGISTER OF DEEDS

(c) (d) (e) Plan view of corner with ties to at least 4 witness monuments. If in disagreement with previously established corner, show the distances between the two corners and also indicate the ties to the disputed corner.

Angles and distances measured with total station. Said distances and angles measured to heads of spikes.

SCALE: 1" = 30'



LEGEND

- 1- SET 3/4" X 24" IRON PIPE
- 3- EXISTING ONEIDA COUNTY WITNESS MONUMENT
- 4- BITUMINOUS PATCH OVER MAG. PULL
- 5- SET 60D SPIKE IN EXISTING 13" REDPINE B.T.
- 6- SET 60D SPIKE IN EXISTING 16" JACK PINE B.T.

(i) I, KEVIN P. BIXBY

(type or print name) certify that the corner location on this record was determined by me or under my direction and control and that this U.S. Public Land Survey Monument Record is correct and complete to the best of my knowledge and belief.



Kevin P. Bixby
Signature

07/06/08
Date 3605240020

Stamp

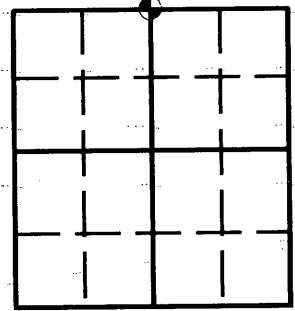
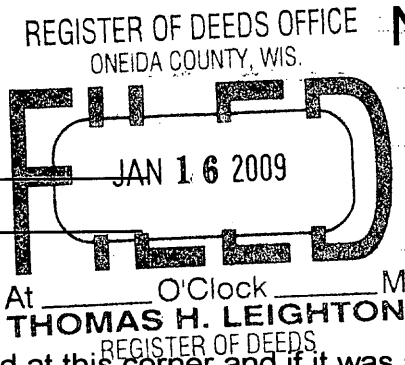
Index No. R-23

U.S. PUBLIC LAND SURVEY MONUMENT RECORD

Note: This form is intended and designed to fulfill all requirements of Wisconsin Administrative Code, Chapter A-E 7.08 U.S. Public Land Survey Monument Record (3)(a)(b)(c)(d)(e)(f)(g)(h)(i). An additional sheet may be added if necessary to conform with said requirements.

(a) Corner location: Township 36 North
Range 05 East/West

Town/City/Village LITTLE RICE
County ONEIDA



Section 25

(b) (f) (g) (h) Description of monument found at this corner and if it was accepted, state all evidence (material, testimonial, occupational, plats, records, other monuments) used as a basis for accepting. If not accepted or if nothing was found, state evidence used as basis for establishing location. If reestablished through lost corner proportionate methods, indicate all monuments, distances and directions used to establish. Indicate type of monument found or set and sign post.

POST-CONSTRUCTION

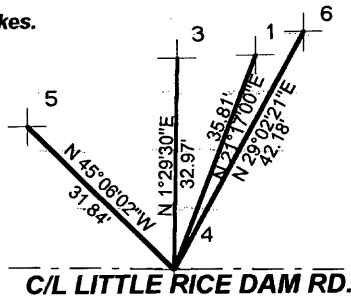
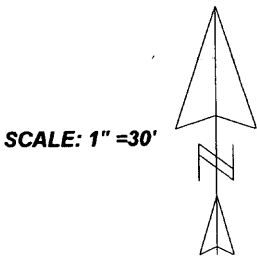
See U.S. Public Land Survey Monument Record Form R-23 for history of corner

-JULY- 2008 Kevin Bixby found mag. pull and witnessed as shown below

-DECEMBER 2008- Kevin Bixby set masonry nail and witnessed as shown below.

(c) (d) (e) Plan view of corner with ties to at least 4 witness monuments. If in disagreement with previously established corner, show the distances between the two corners and also indicate the ties to the disputed corner.

Angles and distances measured with total station. Said distances and angles measured to heads of spikes.

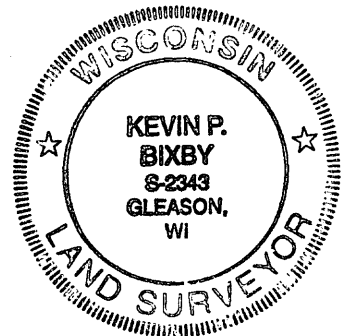


LEGEND

- 1- EXISTING 3/4" X 24" IRON PIPE
- 3- EXISTING ONEIDA COUNTY WITNESS MONUMENT
- 4- SET MASONRY NAIL
- 5- EXISTING 60D SPIKE IN EXISTING 13" REDPINE B.T.
- 6- EXISTING 60D SPIKE IN EXISTING 16" JACK PINE B.T.

(i) I, KEVIN P. BIXBY

(type or print name) certify that the corner location on this record was determined by me or under my direction and control and that this U.S. Public Land Survey Monument Record is correct and complete to the best of my knowledge and belief.



Kevin P. Bixby
Signature

12/08/08
Date 3605240020

Stamp

Index No. R-23