

CERTIFIED LAND CORNER RESTORATION

Index No. Q - 2

State of Wisconsin

County of Oneida } ss.

I Glen Barker

do hereby certify that on the 14th day

of February, 19 84, ~~1983~~ 1984 Estab.

~~corner of the~~ S 1/16

corner of Sections 19 & 24

Township 36, North, Range

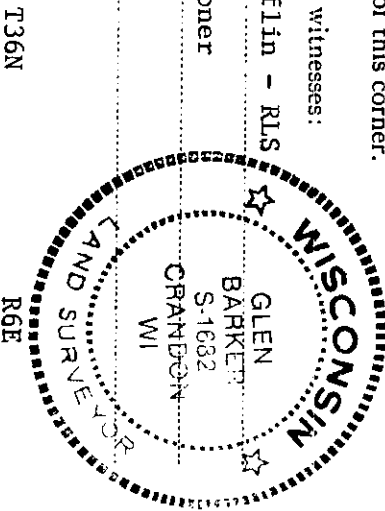
5 & 6 East, Fourth Principal Meridian,

as described hereon; and that from this evidence I established a new monument and accessories as described hereon to perpetuate the original location of this corner.

Resident witnesses:

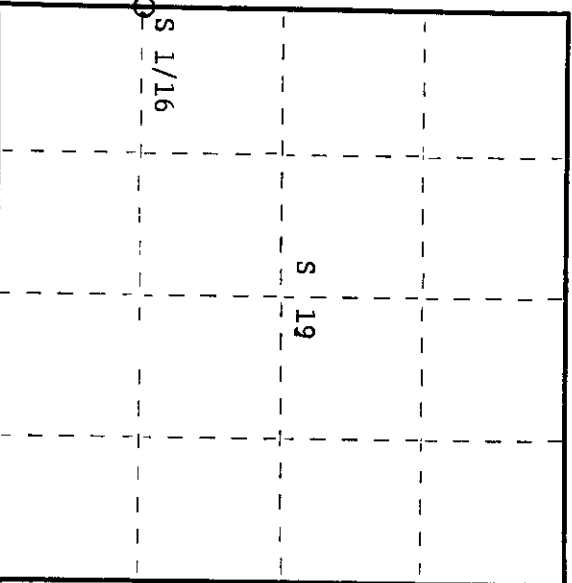
J. Claflin - RLS

H. Wagoner



T36N

R6E



○ = Corner monument restored.

History of original corner establishment:

No evidence of any previous corner.

Description of corner evidence found:

Total distance from section corner 24-25/19-30 T36N R5&6E to 1/4 corner between sections 19 & 24 is 2650.46'. Set S 1/16 1325.23' intermediate.

Description of monument and accessories I established to perpetuate the original location of this corner. Set rail road spike west of center line of C.T.H. "Y" for true corner. Set a 1" iron pipe with 2" diameter alloy cap 30.0' West of true corner for Reference Corner. Cap stamped:

Marked NBTs to true corner
Cedar 6" S60W 35.72'
Cedar 6" N58W 42.65'

S1682
R5E T36N R6E
S 1/16 24 19 REF
COR
E. 30 Ft.
S1682 - CPI

Dated at Rhineland, Wis., this 22nd day of March, 1984

Signature Glen Barker Title Registered Land Surveyor Registration No. S1682
(County Surveyor, Registered Land Surveyor, or other duly authorized official)

Office of Register of Deeds, County of Oneida
Instrument was filed in this office for record on the 23rd day of May, 1984
at 10 o'clock A. M. I hereby certify that the within

Doris Berger Tuelke
(Register of Deeds)

By _____ Deputy

3605141000

U.S. PUBLIC LAND SURVEY MONUMENT RECORD

Note: This form is intended and designed to fulfill all requirements of Wisconsin Administrative Code, Chapter A-E 7.08 U.S. Public Land Survey Monument Record (3) (a) (b) (c) (d) (e) (f) (g) (h) (i). An additional sheet may be added if necessary to conform with said requirements.

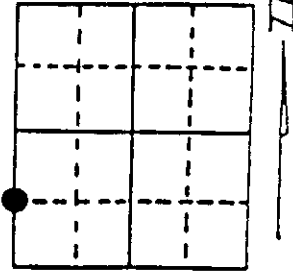
(a) Corner location: Township 36 North

Range 6 East/West

Town/City/Village NOKOMIS

County ONEIDA

COR ID
43605241000



Section 19

(b) (f) (g) (h) Description of monument found at this corner and if it was accepted, state all evidence (material, testimonial, occupational, plats, records, other monuments) used as a basis for accepting. If not accepted or if nothing was found, state evidence used as basis for establishing location. If reestablished through lost corner proportionate methods, indicate all monuments, distances and directions used to establish. Indicate type of monument found or set and sign post.

RESET RAILROAD SPIKE ON LINE BETWEEN SW SECTION CORNER AND WEST 1/4 CORNER, 2650.46 FT SEC. COR TO 1/4, 1325.23 FT. 1/4 TO 1/16.

FITS MAP BY GLEN BARKER S-1682, DATED 1984. #B494

1" DIA. IRON PIPE WITH 2" DIA. ALLOY TABLET, WEST 30.0 FT.

NAIL IN 7" CEDAR N54° W, 42.66 FT.

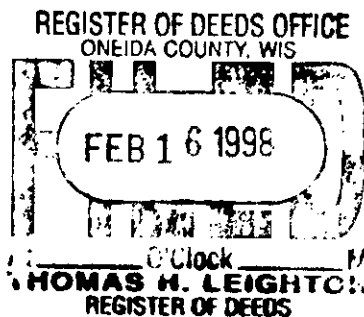
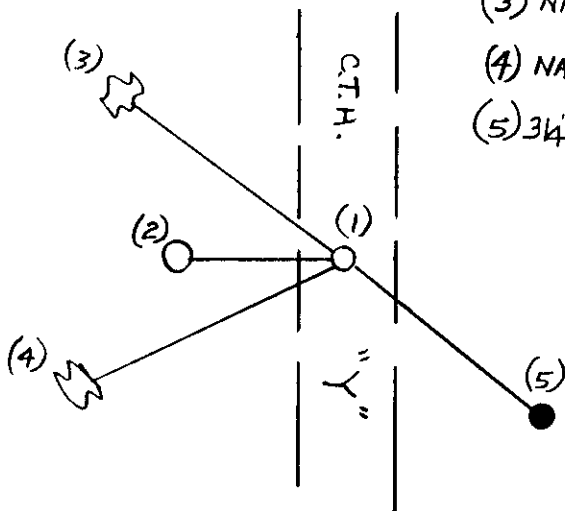
NAIL IN 6" CEDAR S65° W, 35.71 FT.



This corner was referenced out in advance of road construction as an act of preserving survey evidence. This corner has not been tested for its accuracy during the course of this preservation and it is recommended that the corner be evaluated for its validity by those using it.

(c) (d) (e) Plan view of corner with ties to at least 4 witness monuments. If in disagreement with previously established corner, show the distances between the two corners and also indicate the ties to the disputed corner.

- (1) RAILROAD SPIKE, SET
- (2) 1" DIA. IRON PIPE 2" DIA. ALLOY TABLET WEST, 30.0 FT.
- (3) NAIL IN 7" CEDAR N54° W, 42.66 FT.
- (4) NAIL IN 6" CEDAR S65° W, 35.71 FT.
- (5) 3/4" DIA. IRON ROD SET, S52° E, 75.00 FT.



(i) I, DENNIS B. ROBERTS

(type or print name) certify that the corner location on this record was determined by me or under my direction and control and that this U.S. Public Land Survey Monument Record is correct and complete to the best of my knowledge and belief.

Dennis B. Roberts
Signature

12-03-97
Date



Index No. 7

Stamp 3605241000