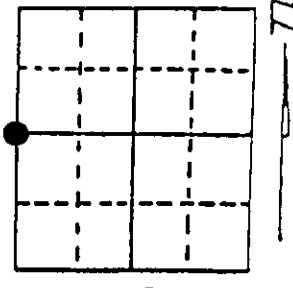


U.S. PUBLIC LAND SURVEY MONUMENT RECORD

Note: This form is intended and designed to fulfill all requirements of Wisconsin Administrative Code, Chapter A-E 7.08 U.S. Public Land Survey Monument Record (3) (a) (b) (c) (d) (e) (f) (g) (h) (i). An additional sheet may be added if necessary to conform with said requirements.

(a) Corner location: Township 36 North
 Range 6 East ~~West~~

Cor ID
 43605242000



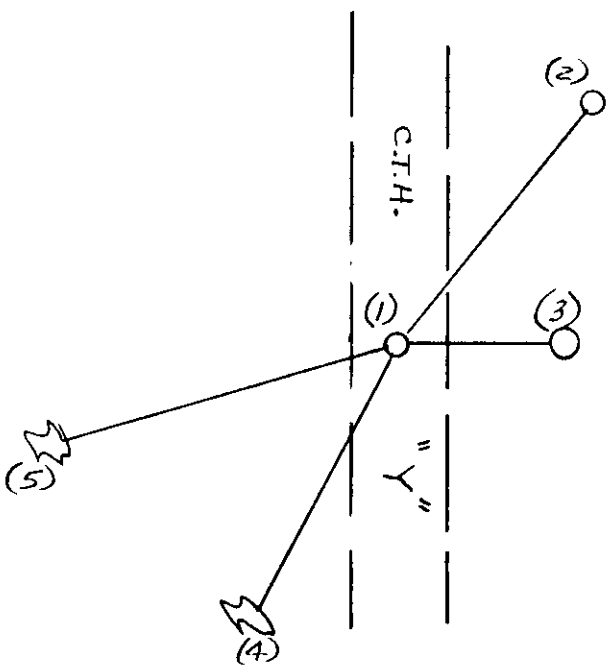
Town/City/Village NOKOMIS
 County ONEIDA

Section 19

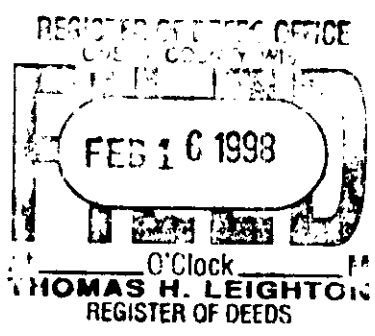
(b) (f) (g) (h) Description of monument found at this corner and if it was accepted, state all evidence (material, testimonial, occupational, plats, records, other monuments) used as a basis for accepting. If not accepted or if nothing was found, state evidence used as basis for establishing location. If reestablished through lost corner proportionate methods, indicate all monuments, distances and directions used to establish. Indicate type of monument found or set and sign post.

- RAILROAD SPIKE FOUND:
- NAIL IN 16" R. PINE S74°W, 42.80 FT.
 - NAIL IN 14" R. PINE S28°W, 96.71 FT.
 - 1 1/2" DIA. IRON PIPE N39°E, 56.00 FT.
 - ONEIDA CO. MON. EAST, 33.00 FT.

(c) (d) (e) Plan view of corner with ties to at least 4 witness monuments. If in disagreement with previously established corner, show the distances between the two corners and also indicate the ties to the disputed corner.

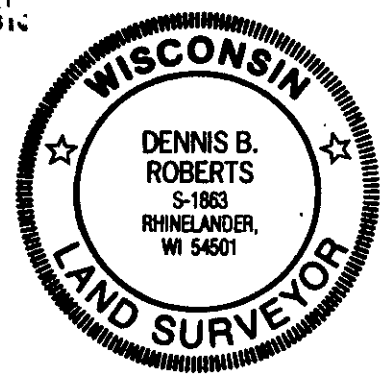


- (1) RAILROAD SPIKE, FOUND
- (2) 1 1/2" DIA. IRON PIPE N39°E, 56.00 FT.
- (3) ONEIDA CO. MON. EAST, 33.00 FT.
- (4) NAIL IN 14" R. PINE S28°W, 96.71 FT.
- (5) NAIL IN 16" R. PINE S74°W, 42.80 FT.



(i) I, DENNIS B. ROBERTS
 (type or print name) certify that the corner location on this record was determined by me or under my direction and control and that this U.S. Public Land Survey Monument Record is correct and complete to the best of my knowledge and belief.

Dennis B. Roberts 12-03-97
 Signature Date



Index No. P 1

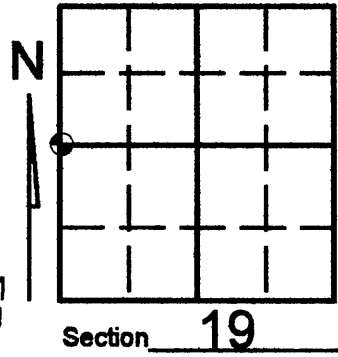
Stamp 3605242000

U.S. PUBLIC LAND SURVEY MONUMENT RECORD

Note: This form is intended and designed to fulfill all requirements of Wisconsin Administrative Code, Chapter A-E 7.08 U.S. Public Land Survey Monument Record (3)(a)(b)(c)(d)(e)(f)(g)(h)(i). An additional sheet may be added if necessary to conform with said requirements.

(a) Corner location: Township 36 North
 Range 06 East/West
 Town/City/Village NOKOMIS
 County ONEIDA

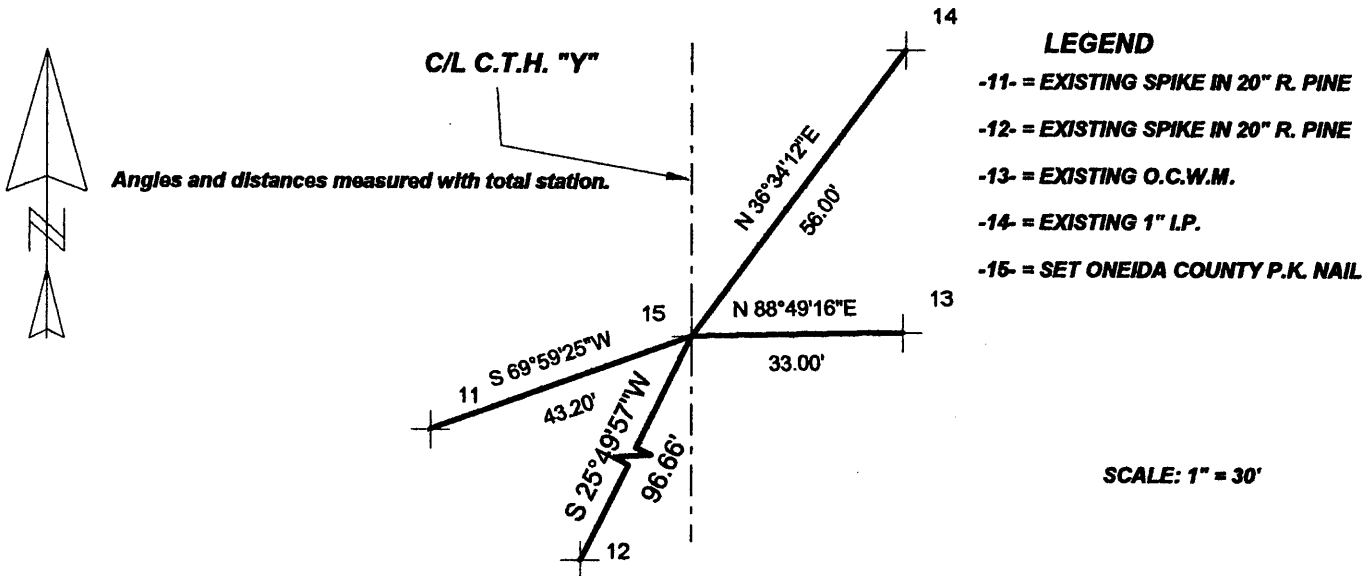
REGISTER OF DEEDS OFFICE
 ONEIDA COUNTY, WIS.
FILED
 SEP 8 2008
 At _____ O'Clock _____ M
THOMAS H. LEIGHTON
 REGISTER OF DEEDS



(b) (f) (g) (h) Description of monument found at this corner and if it was accepted, state all evidence (material, testimonial, occupational, plats, records, other monuments) used as a basis for accepting. If not accepted or if nothing was found, state evidence used as basis for establishing location. If reestablished through lost corner proportionate methods, indicate all monuments, distances and directions used to establish. Indicate type of monument found or set and sign post.

-JUNE 2008- Kevin Bixby set Oneida County P.K. nail per information contained in Oneida County corner form 43605242000. (ALSO SEE BIXBY LAND SURVEYING INC. DWG # 444)

(c) (d) (e) Plan view of corner with ties to at least 4 witness monuments. If in disagreement with previously established corner, show the distances between the two corners and also indicate the ties to the disputed corner.



(i) I, KEVIN P. BIXBY
 (type or print name) certify that the corner location on this record was determined by me or under my direction and control and that this U.S. Public Land Survey Monument Record is correct and complete to the best of my knowledge and belief.



Index No. P-1

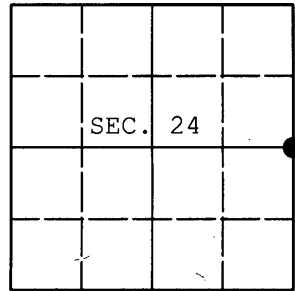
Kevin P. Bixby
 Signature Date 09/04/08
3605242000

Stamp

U.S. PUBLIC LAND SURVEY MONUMENT RECORD

Note: This form is intended and designed to fulfill all requirements of Wisconsin Administrative Code, Chapter A-E 7.08 U.S. Public Land Survey Monument Record (3) (a) (b) (c) (d) (e) (f) (g) (h) (i). An additional sheet may be added if necessary to conform with said requirements.

(a) CORNER LOCATION: WISCORS - Oneida County
 1/4 Cor. of Secs. 19 & 24 N: 148,032.20 USft
 Township 36 North E: 165,581.32 USft
 Range 5 & 6 East of the 4th P.M. Datum: NAD 1983(2011)
 Town of Little Rice & Nokomis County of Oneida



(b) HISTORY OF ORIGINAL CORNER ESTABLISHMENT

Original Surveyor: Original Accessories:
 Date of Survey: Commenced:
 Completed:

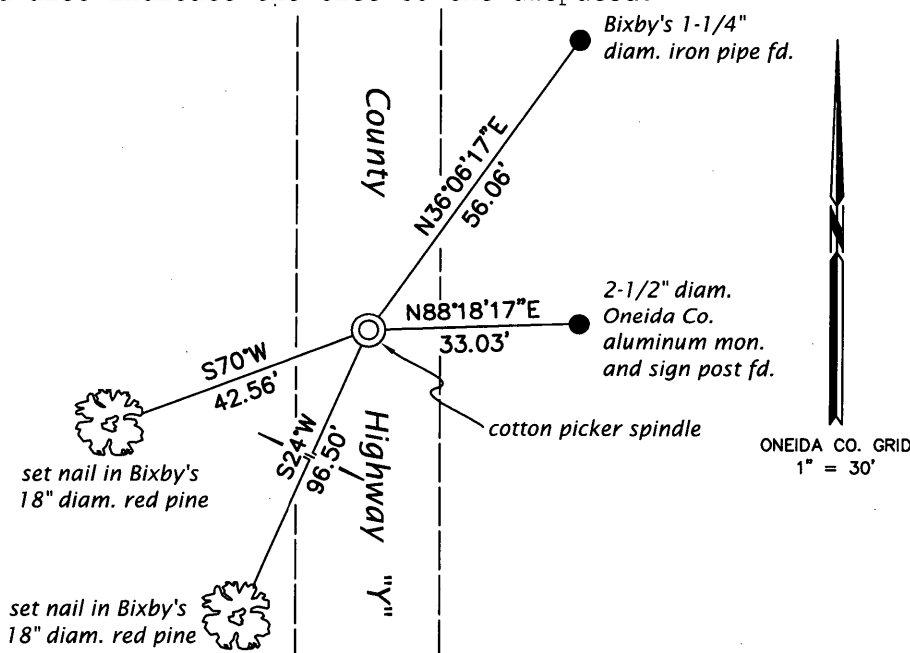
(b) (f) (g) (h) Description of monument found at this corner and if it was accepted, state all evidence (material, testimonial, occupational, plats, records, other monuments) used as a basis for accepting. If not accepted or if nothing was found, state evidence used as basis for establishing location. If re-established through lost corner proportionate methods, indicate all monuments, distances and directions used to establish. Indicate type of monument and sign post found or set.

This is a perpetuation of a previous USPLS Monument Record by Kevin P. Bixby, RLS dated September 4, 2008 and filed in the office of the Oneida County Register of Deeds. A complete history of the corner can be found on the previous monument record. I accept the previous location as a true and faithful perpetuation or reestablishment of the original corner location and further perpetuate it as follows.

June 18, 2013: Prior to road construction, I found and accepted the record monument, a DURA-NAIL in the centerline of County Highway Y. I performed a GPS observation referenced to the WISCORS GNSS Network. I found or established accessories as shown below.

August 2, 2015: Following road construction, I returned and set a cotton picker spindle at the corner point from the reference monuments established previously. I performed a second GPS observation referenced to the WISCORS GNSS Network. The coordinates shown are the mean of the two observations that differed by 0.02 ft.

(c) (d) (e) Plan view of corner with ties to at least 4 witness monuments. If in disagreement with previously established corner, show the distances between the two corners and also indicate the ties to the disputed.



REGISTER OF DEEDS OFFICE
 ONEIDA COUNTY
 FILED

FEB 08 2016

(i) I, Jeffrey W. Austin, Professional Land Surveyor No. S-1885, hereby certify that the corner location on this record was determined by me or under my direction and control and that this U.S. Public Land Survey Monument Record is correct and complete to the best of my knowledge and belief.

AT _____ O'CLOCK _____ M
 KYLE J. FRANSON
 REGISTER OF DEEDS

Signature

Date

JAN. 14, 2016