

CERTIFIED LAND CORNER RESTORATION
U. S. LAND SURVEY MONUMENT RECORD

History of original corner establishment:

The original Government Survey was performed by Alfred Willard,
Deputy Surveyor in 1860.

Wood Post Set:			
Spruce Pine	10"	S 3°W	777 links
Spruce Pine	6"	N1-1/2°W	750 links
Spruce Pine	6"	N3-1/2°E	745 links

Description of corner evidence found:

1" iron pipe in centerline of Highway "Y" and Old Highway "8".

Norway Pine	10"	S 10°W	45.0 feet
Norway Pine	8"	S 52°W	78.6 feet
2" iron pipe northeast corner of lot 1 of Woodsmoke			South 33.01 feet
2" iron pipe southeast corner of lot 1 of Woodsmoke			South 283.10 feet

Description of monument and accessories I established to perpetuate the original location of this corner.

Corner in good condition so I set nails in existing bearing trees

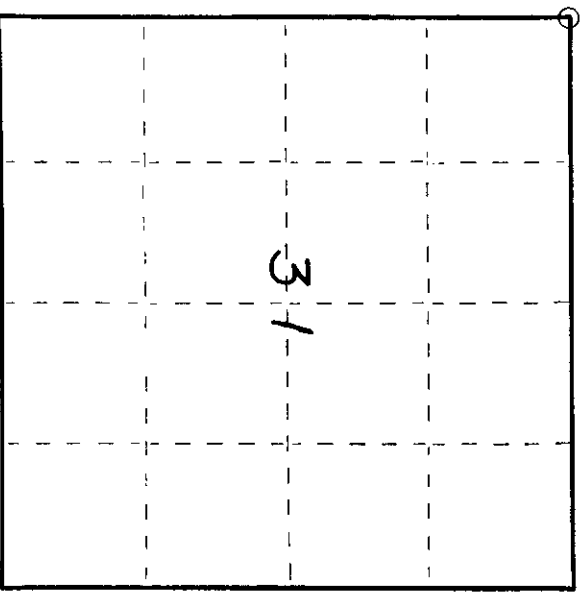
Norway Pine	10"	S 10°W	48.20 feet
Norway Pine	8"	S 52°W	78.60 feet

State of Wisconsin

County of Oneida } ss.

I John H. Fisher, do hereby
certify that on the 23 day
of June, 1983, I found
evidence of the Northwest
corner of Section 31
Township 36, North, Range
6 East, Fourth Principal Meridian,
as described hereon; and that from this evidence
I established a new monument and accessories
as described hereon to perpetuate the original
location of this corner.

Resident witnesses:
None



○ = Corner monument restored.

Dated at Minocqua, Wis., this 4th day of October, 1983.

Signature: John H. Fisher Title Registered Land Surveyor Registration No. S-836
(County Surveyor, Registered Land Surveyor, or other duly authorized official)

Office of Register of Deeds, County of Oneida
Instrument was filed in this office for record on the 18th day of January, 1984
at 10⁰⁰ o'clock A. M.

Dore Verge Kuehn
(Register of Deeds)

Compared with all record data
and accepted as correct.

By: Robert H. King 18 JAN 84
Deputy Oneida County Surveyor date

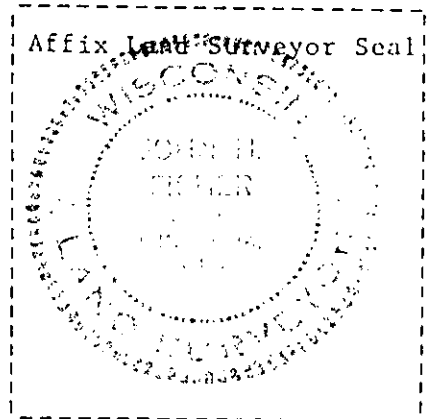
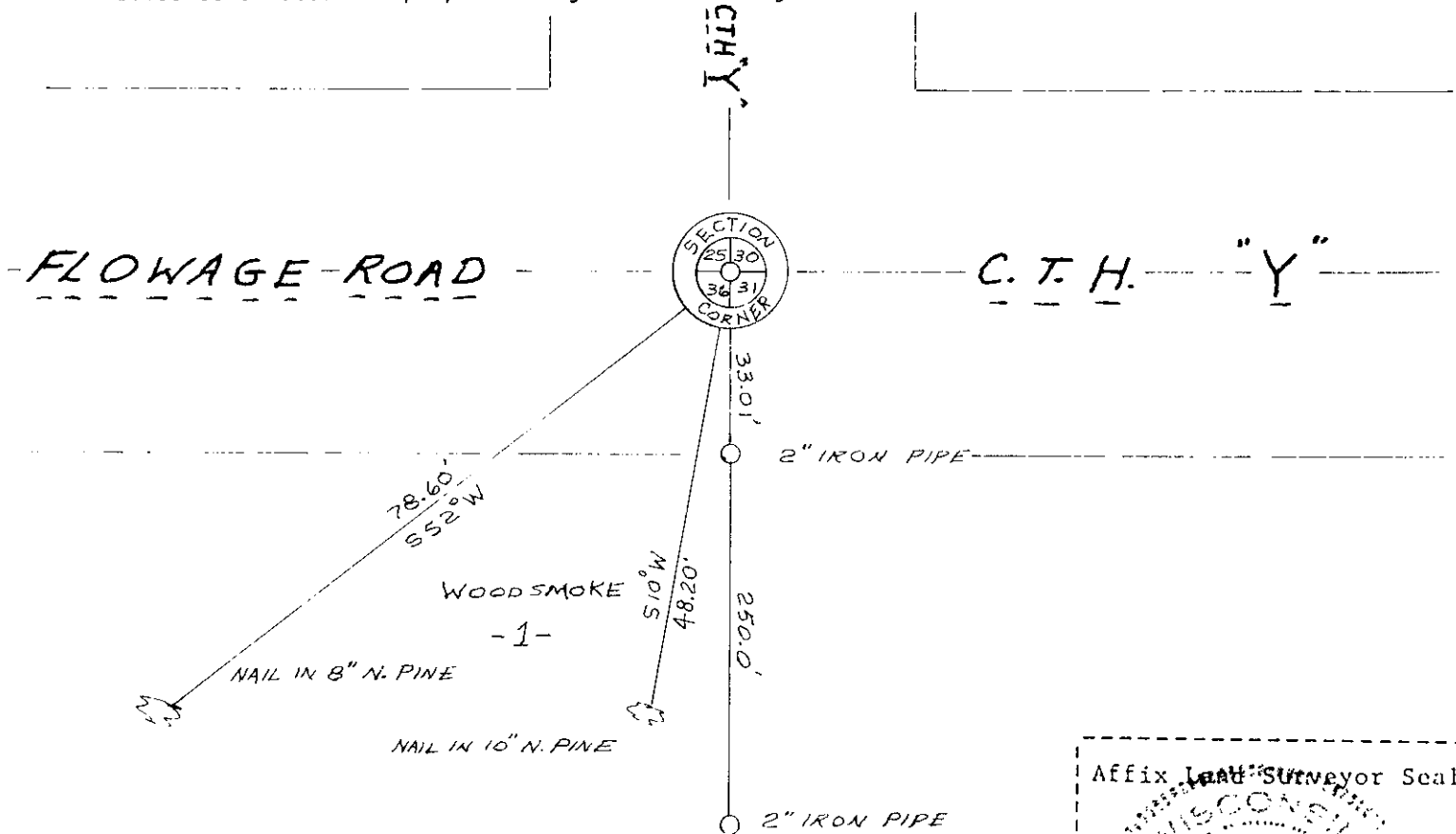
(e) Describe any material discrepancy between the location of the corner as restored or reestablished and the location of that corner as previously restored or reestablished by distance and direction. Show the discrepancy on the plan view drawing under (d), above. Show the distances between the corner as previously restored or reestablished and (1) the corner as restored or reestablished, and (2) to at least 2 of the witness monuments shown on the drawing in (d), above.

See drawing below

(f) Was the corner restored through acceptance of (1) an obliterated evidence location, or, (2) a found perpetuated location?

Found perpetuated location

(g&h) Was the corner reestablished through lost corner proportionate methods? If so, show the method, including the directions and distances to other public land survey corners used as evidence or used for proportioning in determining the corner location?



(i) I, John H. Fisher
 (type or print name) certify that the corner location shown on this record was determined by me or under my direction and control and that this U.S. Public Land Survey Monument Record is correct and complete to the best of my knowledge and belief.

John H. Fisher
 Signature

10/4/83
 Date

U.S. PUBLIC LAND SURVEY MONUMENT RECORD

Note: This form is intended and designed to fulfill all requirements of Wisconsin Administrative Code, Chapter A-E 7.08 U.S. Public Land Survey Monument Record (3) (a) (b) (c) (d) (e) (f) (g) (h) (i). An additional sheet may be added if necessary to conform with said requirements.

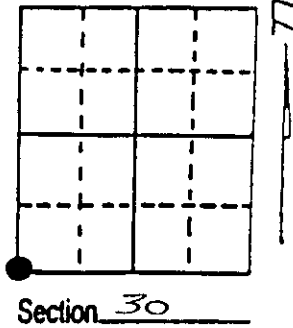
(a) Corner location: Township 36 North

Range 6 East ~~West~~

Town/City/Village NOKOMIS

County ONEIDA

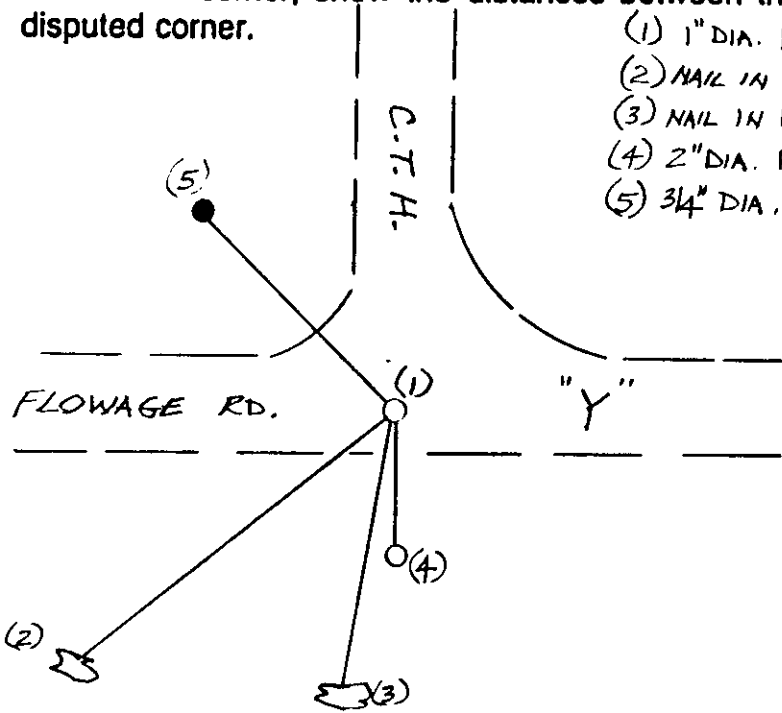
COR ID
43605250000



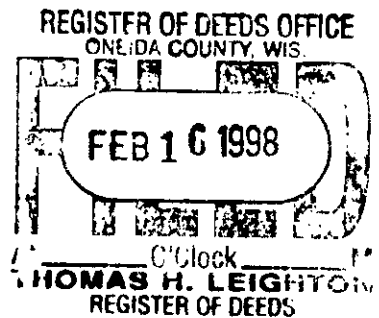
(b) (f) (g) (h) Description of monument found at this corner and if it was accepted, state all evidence (material, testimonial, occupational, plats, records, other monuments) used as a basis for accepting. If not accepted or if nothing was found, state evidence used as basis for establishing location. If reestablished through lost corner proportionate methods, indicate all monuments, distances and directions used to establish. Indicate type of monument found or set and sign post.

1" DIA. IRON PIPE FOUND, FOUND BY JOHN H. FISHER IN 1983
 BT^S FOUND
 NAIL IN 8" R. PINE S52°W, 78.60 FT.
 NAIL IN 10" R. PINE S10°W, 48.20 FT.
 2" DIA. IRON PIPE SOUTH 33.01 FT

(c) (d) (e) Plan view of corner with ties to at least 4 witness monuments. If in disagreement with previously established corner, show the distances between the two corners and also indicate the ties to the disputed corner.



- (1) 1" DIA. IRON PIPE FOUND
- (2) NAIL IN 8" R. PINE S52°W, 78.60 FT.
- (3) NAIL IN 10" R. PINE S10°W, 48.20 FT.
- (4) 2" DIA. IRON PIPE SOUTH, 33.01 FT.
- (5) 3/4" DIA. IRON ROD SET, N45°W, 70.00 FT.



(i) I, DENNIS B. ROBERTS
 (type or print name) certify that the corner location on this record was determined by me or under my direction and control and that this U.S. Public Land Survey Monument Record is correct and complete to the best of my knowledge and belief.

Dennis B. Roberts 12-03-97
 Signature Date



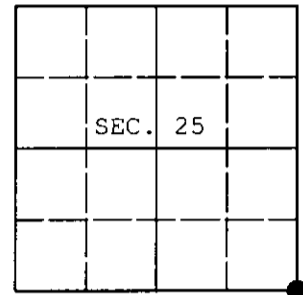
Index No. V 1

Stamp 3605250000

U.S. PUBLIC LAND SURVEY MONUMENT RECORD

Note: This form is intended and designed to fulfill all requirements of Wisconsin Administrative Code, Chapter A-E 7.08 U.S. Public Land Survey Monument Record (3) (a) (b) (c) (d) (e) (f) (g) (h) (i). An additional sheet may be added if necessary to conform with said requirements.

(a) CORNER LOCATION: WISCORS - Oneida County
 Cor. of Secs. 25, 30, 31 & 36 N: 140,117.20 USft
 Township 36 North E: 165,574.69 USft
 Range 5 & 6 East of the 4th P.M. Datum: NAD 1983(2011)
 Town of Little Rice & Nokomis County of Oneida



(b) HISTORY OF ORIGINAL CORNER ESTABLISHMENT

Original Surveyor: _____ Original Accessories: _____
 Date of Survey: Commenced: _____
 Completed: _____

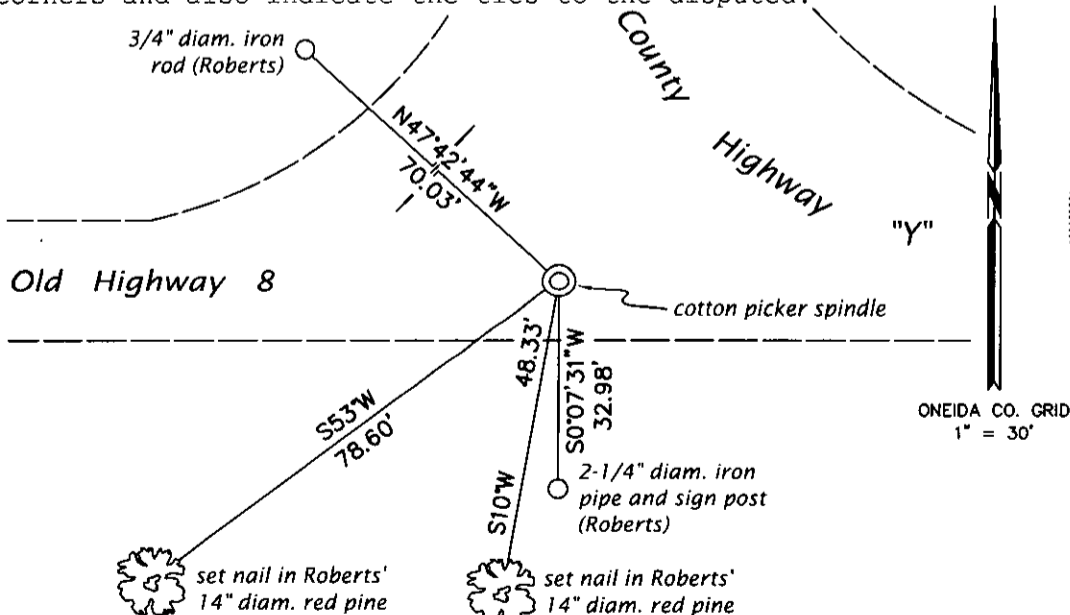
(b) (f) (g) (h) Description of monument found at this corner and if it was accepted, state all evidence (material, testimonial, occupational, plats, records, other monuments) used as a basis for accepting. If not accepted or if nothing was found, state evidence used as basis for establishing location. If re-established through lost corner proportionate methods, indicate all monuments, distances and directions used to establish. Indicate type of monument and sign post found or set.

This is a perpetuation of a previous USPLS Monument Record by Dennis B. Roberts, RLS dated December 3, 1997 and filed in the office of the Oneida County Register of Deeds. A complete history of the corner can be found on the previous monument record. I accept the previous location as a true and faithful perpetuation or reestablishment of the original corner location and further perpetuate it as follows.

June 27, 2013: Prior to road construction, I found and accepted a perpetuation of the record monument, a PK nail in the road intersection. I performed a GPS observation referenced to the WISCORS GNSS Network. I found or established accessories as shown below.

August 2, 2015: Following road construction, I returned and set a cotton picker spindle at the corner point from the reference monuments established previously. I performed a second GPS observation referenced to the WISCORS GNSS Network. The coordinates shown are the mean of the two observations that differed by 0.04 ft.

(c) (d) (e) Plan view of corner with ties to at least 4 witness monuments. If in disagreement with previously established corner, show the distances between the two corners and also indicate the ties to the disputed.



REGISTER OF DEEDS OFFICE
 ONEIDA COUNTY
 FILED

OCT 15 2015

AT _____ O'CLOCK _____ M
 KYLE J. FRANSON
 REGISTER OF DEEDS

(i) I, Jeffrey W. Austin, Professional Land Surveyor No. S-1885, hereby certify that the corner location on this record was determined by me or under my direction and control and that this U.S. Public Land Survey Monument Record is correct and complete to the best of my knowledge and belief.

Signature _____

Date OCT - 11, 2015

3605250000 (INDEX NO. V-25)