

U.S. PUBLIC LAND SURVEY MONUMENT RECORD

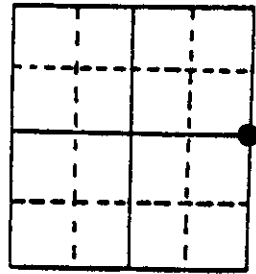
Note: This form is intended and designed to fulfill all requirements of Wisconsin Administrative Code, Chapter A-E 7.08 U.S. Public Land Survey Monument Record (3) (a) (b) (c) (d) (e) (f) (g) (h) (i). An additional sheet may be added if necessary to conform with said requirements.

(a) Corner location: Township 36 North

Range 5 & 6 East

Town/~~City/Village~~ Little Rice

County Oneida



Section 25

(b) (f) (g) (h) Description of monument found at this corner and if it was accepted, state all evidence (material, testimonial, occupational, plats, records, other monuments) used as a basis for accepting. If not accepted or if nothing was found, state evidence used as basis for establishing location. If reestablished through lost corner proportionate methods, indicate all monuments, distances and directions used to establish. Indicate type of monument found or set and sign post.

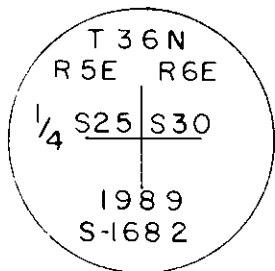
Recovered a rail road spike in 1982 and made reference to, resurfacing of County Highway "Y" in 1988 destroyed spike.

Reestablished position from reference ties and recorded survey maps, Substantiates distance to the Section corners north and south, old fence runs west.

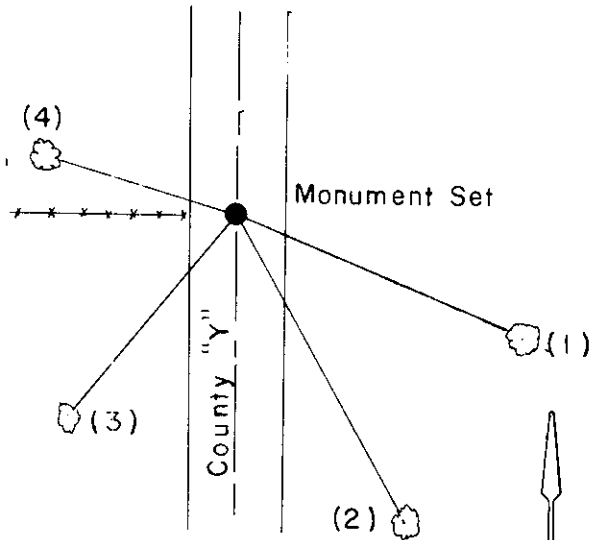
Set a 2-1/4" Oneida County aluminum monument with 3-1/4" alloy cap 7" below road surface.

(c) (d) (e) Plan view of corner with ties to at least 4 witness monuments. If in disagreement with previously established corner, show the distances between the two corners and also indicate the ties to the disputed corner.

Monument Set



- (1) 8" Jack Pine, S67°30'E, 64.50'
- (2) 6" Jack Pine, S29°E, 73.18'
- (3) 7" Jack Pine, S40°W, 55.64'
- (4) 7" Red Oak, N83°W, 41.42'



(i) I, Glen Barker
 (type or print name) certify that the corner location on this record was determined by me or under my direction and control and that this U.S. Public Land Survey Monument Record is correct and complete to the best of my knowledge and belief.

Glen Barker 12/22/89
 Signature Date



Index No. T-25

3605252000

24 | 19
25 | 30

S 0° 48' 08" W

2629.59'

Recovered 1/4 Corner

2636.00'

S 1° 16' 45" W

25 | 30
36 | 31

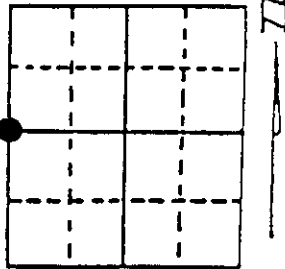


U.S. PUBLIC LAND SURVEY MONUMENT RECORD

Note: This form is intended and designed to fulfill all requirements of Wisconsin Administrative Code, Chapter A-E 7.08 U.S. Public Land Survey Monument Record (3) (a) (b) (c) (d) (e) (f) (g) (h) (i). An additional sheet may be added if necessary to conform with said requirements.

(a) Corner location: Township 36 North
 Range 6 East ~~West~~

COR ID
 43605252000 1/4



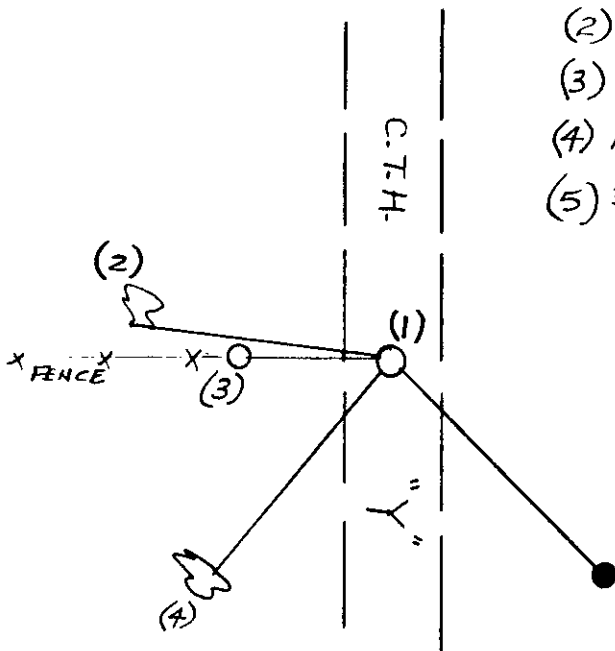
Town/City/Village NOKOMIS
 County ONEIDA

Section 30

(b) (f) (g) (h) Description of monument found at this corner and if it was accepted, state all evidence (material, testimonial, occupational, plats, records, other monuments) used as a basis for accepting. If not accepted or if nothing was found, state evidence used as basis for establishing location. If reestablished through lost corner proportionate methods, indicate all monuments, distances and directions used to establish. Indicate type of monument found or set and sign post.

ONEIDA CO. ALUM. MON. FOUND 10" BELOW C.T.H. SURFACE, BY GLEN BARKER S-1682 IN 1989
 8" J. PINE STUMP S67°30'E, 64.50 FT.
 6" J. PINE STUMP S29°E, 73.18 FT.
 NAIL IN 7" RED OAK N83°W, 41.42 FT.

(c) (d) (e) Plan view of corner with ties to at least 4 witness monuments. If in disagreement with previously established corner, show the distances between the two corners and also indicate the ties to the disputed corner.



- (1) ONEIDA CO. ALUM. MON., FOUND
- (2) NAIL IN 7" RED OAK N83°W, 41.42 FT.
- (3) 1 1/2" IRON PIPE FOUND N89°W, 32.96 FT.
- (4) NAIL IN 7" J. PINE S40°W, 55.64 FT.
- (5) 3/4" DIA. IRON ROD SET, S45°E, 50.00 FT.

REGISTER OF DEEDS OFFICE
 ONEIDA COUNTY, WIS

 THOMAS H. LEIGHTON
 REGISTER OF DEEDS

(i) I, DENNIS B. ROBERTS
 (type or print name) certify that the corner location on this record was determined by me or under my direction and control and that this U.S. Public Land Survey Monument Record is correct and complete to the best of my knowledge and belief.

Dennis B. Roberts 12-03-97
 Signature Date



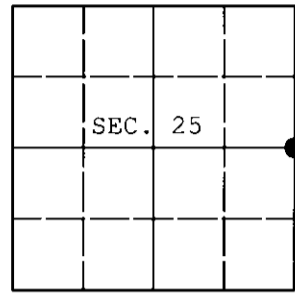
Index No. T 1

Stamp 3605252000

U.S. PUBLIC LAND SURVEY MONUMENT RECORD

Note: This form is intended and designed to fulfill all requirements of Wisconsin Administrative Code, Chapter A-E 7.08 U.S. Public Land Survey Monument Record (3) (a) (b) (c) (d) (e) (f) (g) (h) (i). An additional sheet may be added if necessary to conform with said requirements.

(a) CORNER LOCATION: WISCORS - Oneida County
 1/4 Cor. of Secs. 25 & 30 N: 142,753.05 USft
 Township 36 North E: 165,610.80 USft
 Range 5 & 6 East of the 4th P.M. Datum: NAD 1983(2011)
 Town of Little Rice & Nokomis County of Oneida



(b) HISTORY OF ORIGINAL CORNER ESTABLISHMENT

Original Surveyor: _____ Original Accessories: _____
 Date of Survey: Commenced: _____
 Completed: _____

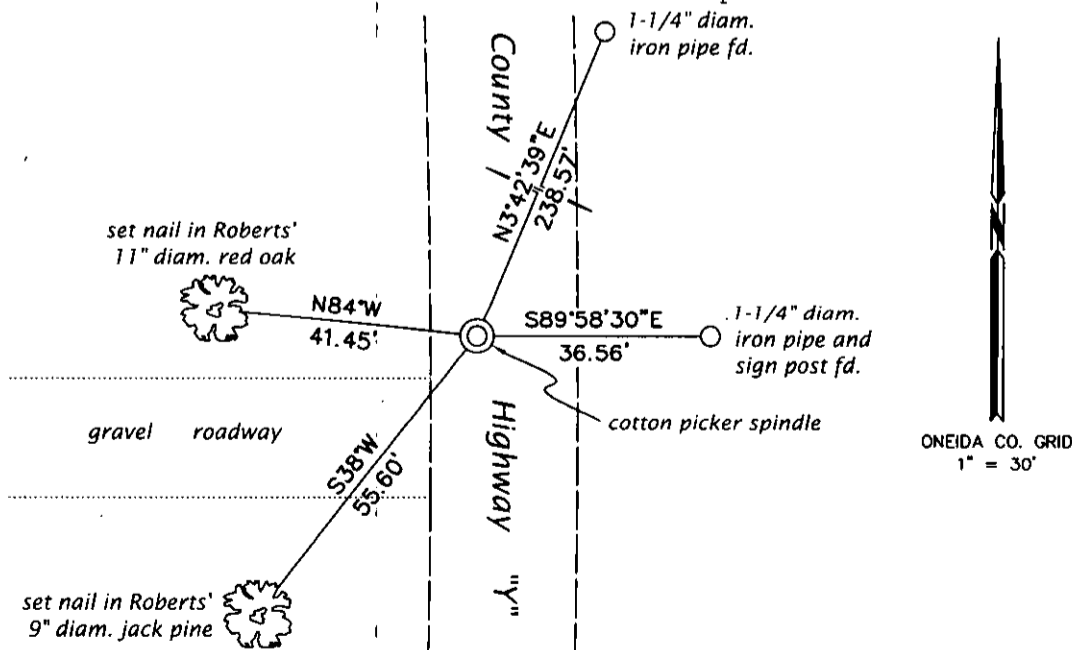
(b) (f) (g) (h) Description of monument found at this corner and if it was accepted, state all evidence (material, testimonial, occupational, plats, records, other monuments) used as a basis for accepting. If not accepted or if nothing was found, state evidence used as basis for establishing location. If re-established through lost corner proportionate methods, indicate all monuments, distances and directions used to establish. Indicate type of monument and sign post found or set.

This is a perpetuation of a previous USPLS Monument Record by Dennis B. Roberts, RLS dated December 3, 1997 and filed in the office of the Oneida County Register of Deeds. A complete history of the corner can be found on the previous monument record. I accept the previous location as a true and faithful perpetuation or reestablishment of the original corner location and further perpetuate it as follows.

June 18, 2013: Prior to road construction, I found and accepted the record monument, a 2-1/2" diam. Oneida Co. aluminum monument 4 ft. West of the centerline of County Highway Y. I performed a GPS observation referenced to the WISCORS GNSS Network. I found or established accessories as shown below.

August 2, 2015: Following road construction, I returned and set a cotton picker spindle at the corner point from the reference monuments established previously. I performed a second GPS observation referenced to the WISCORS GNSS Network. The coordinates shown are the mean of the two observations that differed by 0.09 ft.

(c) (d) (e) Plan view of corner with ties to at least 4 witness monuments. If in disagreement with previously established corner, show the distances between the two corners and also indicate the ties to the disputed.



REGISTER OF DEEDS OFFICE
 ONEIDA COUNTY
 FILED

OCT 15 2015

AT _____ O'CLOCK _____ M
 KYLE J. FRANSON
 REGISTER OF DEEDS

(i) I, Jeffrey W. Austin, Professional Land Surveyor No. S-1885, hereby certify that the corner location on this record was determined by me or under my direction and control and that this U.S. Public Land Survey Monument Record is correct and complete to the best of my knowledge and belief.

Signature: _____ Date: OCT. 11, 2015