

**CERTIFIED LAND CORNER RESTORATION
U.S. PUBLIC LAND SURVEY MONUMENT RECORD**

Index No. V-21

History of original corner establishment:
The original Government Survey was performed by Joseph H. Jenkins,
Deputy Surveyor in June 1863.

Wood Post Set			
Yellow Pine	10"	N55°E	27 Links
Yellow Pine	12"	S 3°E	28 Links

Description of corner evidence found:

Railroad spike in centerline of Old Highway "8" and Kelly Dam Road
Owens Illinois ET Jack Pine 12" S33°W, 74.6 feet
1-1/2" iron rod N25°E 0.85 feet

State of Wisconsin

County of Oneida } ss.

I John H. Fisher, do hereby
certify that on the 23 day
of June 1983, I found
evidence of the Northwest
corner of the Section 36
Township 36, North, Range
5 East, Fourth Principal Meridian,
as described hereon; and that from this evidence
I established a new monument and accessories
as described hereon to perpetuate the original
location of this corner.

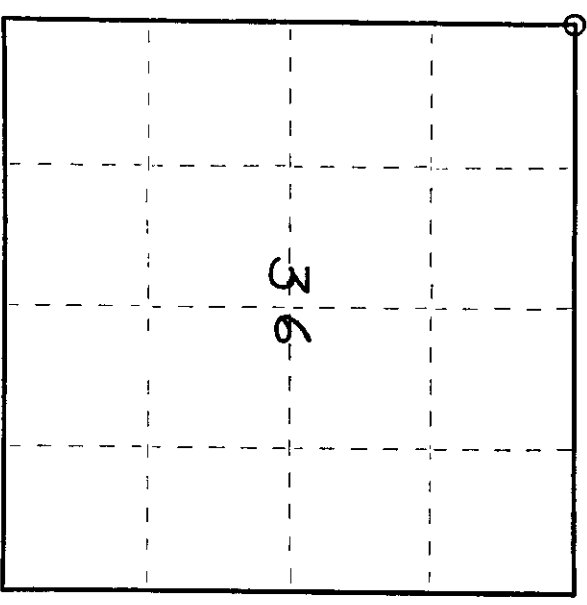
Resident witnesses:

None

Description of monument and accessories I established to perpetuate the original location of this corner.

Replaced railroad spike with Oneida County Bernussen Monument stamped to
identify corner.

Nail in Jack Pine	12"	N33°E	74.45 feet
Nail in Jack Pine	8"	S71°W	94.34 feet
Road sign post	2" iron pipe	N55°W	21.78 feet



○ = Corner monument restored.

Dated at Minocqua, Wis., this 21st day of October, 1983

Signature John H. Fisher Title Registered Land Surveyor Registration No. S-836
(County Surveyor, Registered Land Surveyor, or other duly authorized official)

Office of Register of Deeds, County of Oneida
Instrument was filed in this office for record on the 18th day of January, 1984
at 10 o'clock A. M.

Signature Terrie Berge Kuehn
(Register of Deeds)

By Robert J. Kinch Deputy
Oneida County Surveyor date 18 Jan 84

Compared with all record data
and accepted as correct.

3605260000

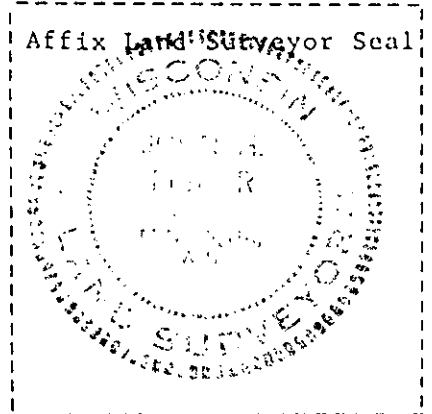
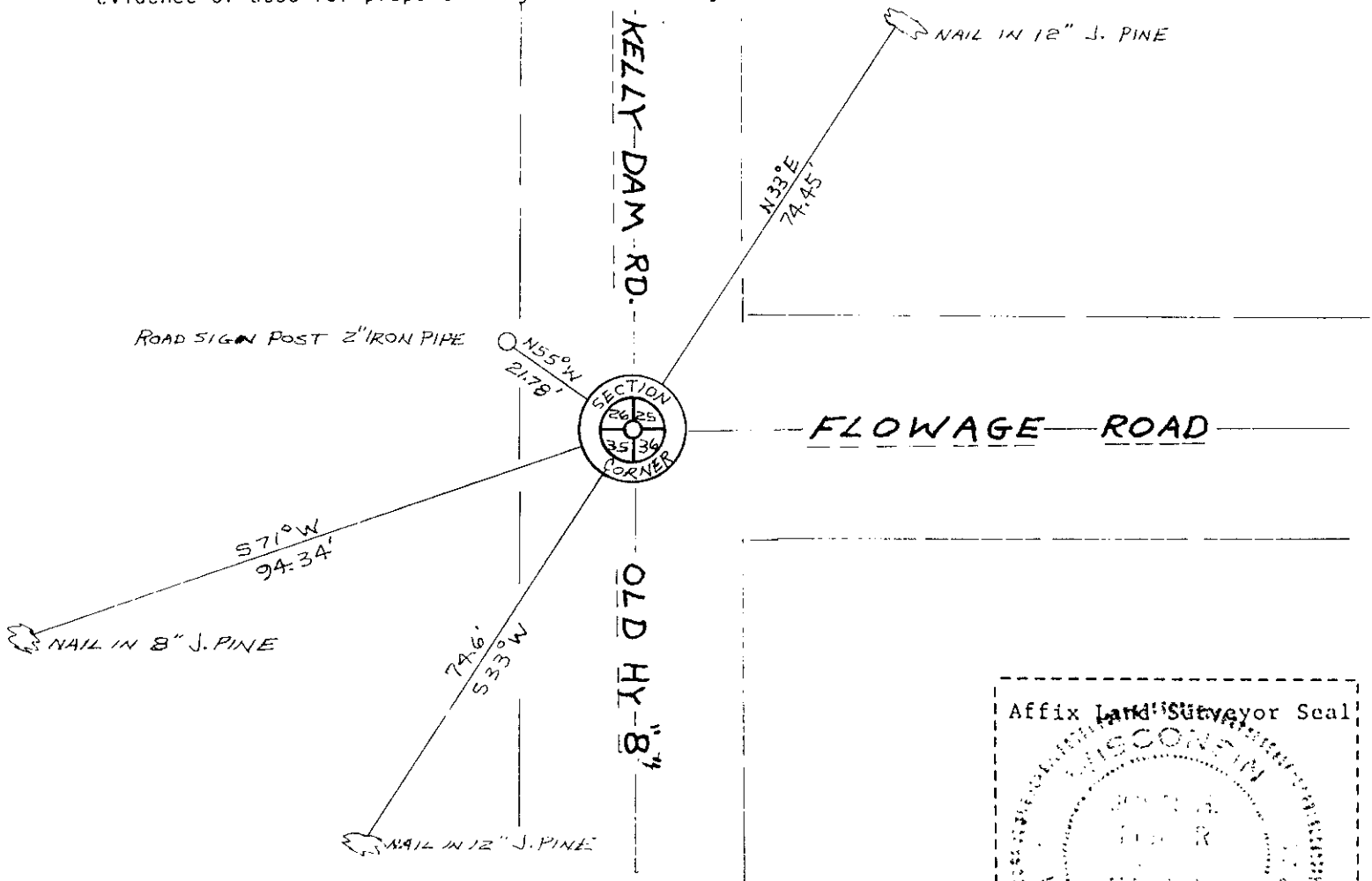
(e) Describe any material discrepancy between the location of the corner as restored or reestablished and the location of that corner as previously restored or reestablished by distance and direction. Show the discrepancy on the plan view drawing under (d), above. Show the distances between the corner as previously restored or reestablished and (1) the corner as restored or reestablished, and (2) to at least 2 of the witness monuments shown on the drawing in (d), above.

See Drawing below

(f) Was the corner restored through acceptance of (1) an obliterated evidence location, or, (2) a found perpetuated location?

Found perpetuated location

(g&h) Was the corner reestablished through lost corner proportionate methods? If so, show the method, including the directions and distances to other public land survey corners used as evidence or used for proportioning in determining the corner location?



John H. Fisher

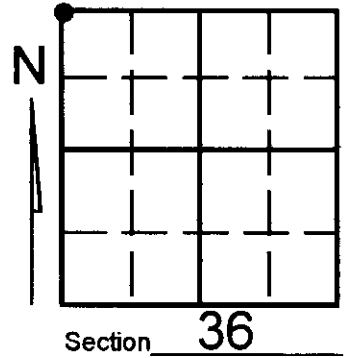
(i) I, John H. Fisher (type or print name) certify that the corner location shown on this record was determined by me or under my direction and control and that this U.S. Public Land Survey Monument Record is correct and complete to the best of my knowledge and belief.

John H. Fisher Signature 10/4/83 Date

U.S. PUBLIC LAND SURVEY MONUMENT RECORD

Note: This form is intended and designed to fulfill all requirements of Wisconsin Administrative Code, Chapter A-E 7.08 U.S. Public Land Survey Monument Record (3)(a)(b)(c)(d)(e)(f)(g)(h)(i). An additional sheet may be added if necessary to conform with said requirements.

(a) Corner location: Township 36 North
 Range 05 East West
 Town/City/Village LITTLE RICE
 County ONEIDA

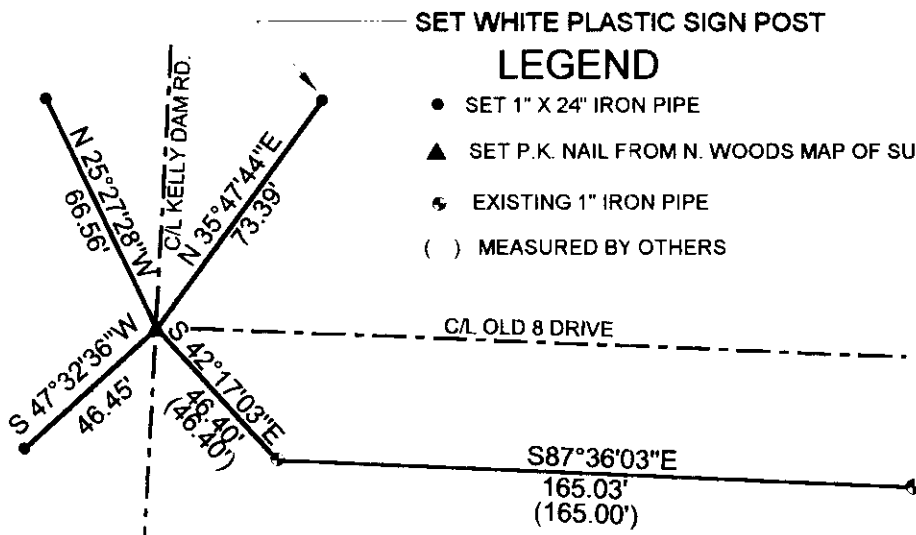


(b) (f) (g) (h) Description of monument found at this corner and if it was accepted, state all evidence (material, testimonial, occupational, plats, records, other monuments) used as a basis for accepting. If not accepted or if nothing was found, state evidence used as basis for establishing location. If reestablished through lost corner proportionate methods, indicate all monuments, distances and directions used to establish. Indicate type of monument found or set and sign post.

NOTE: This corner was referenced out in advance of road construction as an act of preserving survey evidence. This corner has not been tested for its accuracy during the course of this preservation and it is recommended that the corner be evaluated for its validity by those using it.

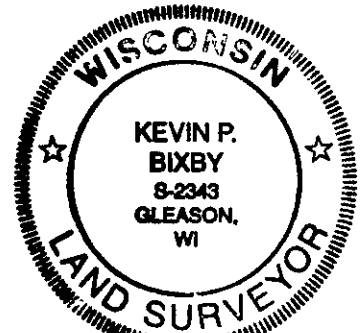
-Corner position was referenced from survey information contained in county survey file number B592. See corner sheet V-21 by John Fisher dated 01/84 for additional information. Referenced out position before road construction and went back to check references and referenced monument as shown below.

(c) (d) (e) Plan view of corner with ties to at least 4 witness monuments. If in disagreement with previously established corner, show the distances between the two corners and also indicate the ties to the disputed corner.



(i) I, KEVIN P. BIXBY

(type or print name) certify that the corner location on this record was determined by me or under my direction and control and that this U.S. Public Land Survey Monument Record is correct and complete to the best of my knowledge and belief.



Kevin P. Bixby
 Signature

02/13/01
 Date

3605260000
 Stamp

Index No. V 21

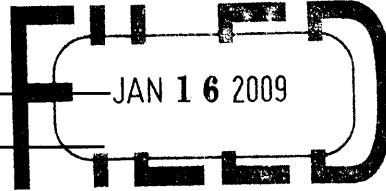
U.S. PUBLIC LAND SURVEY MONUMENT RECORD

Note: This form is intended and designed to fulfill all requirements of Wisconsin Administrative Code, Chapter A-E 7.08 U.S. Public Land Survey Monument Record (3)(a)(b)(c)(d)(e)(f)(g)(h)(i). An additional sheet may be added if necessary to conform with said requirements.

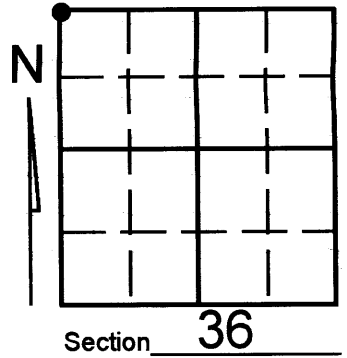
(a) Corner location: Township 36 North
Range 05 East/West

Town/City/Village LITTLE RICE
County ONEIDA

REGISTER OF DEEDS OFFICE
ONEIDA COUNTY, WIS.



At _____ O'Clock _____ M
THOMAS H. LEIGHTON
REGISTER OF DEEDS



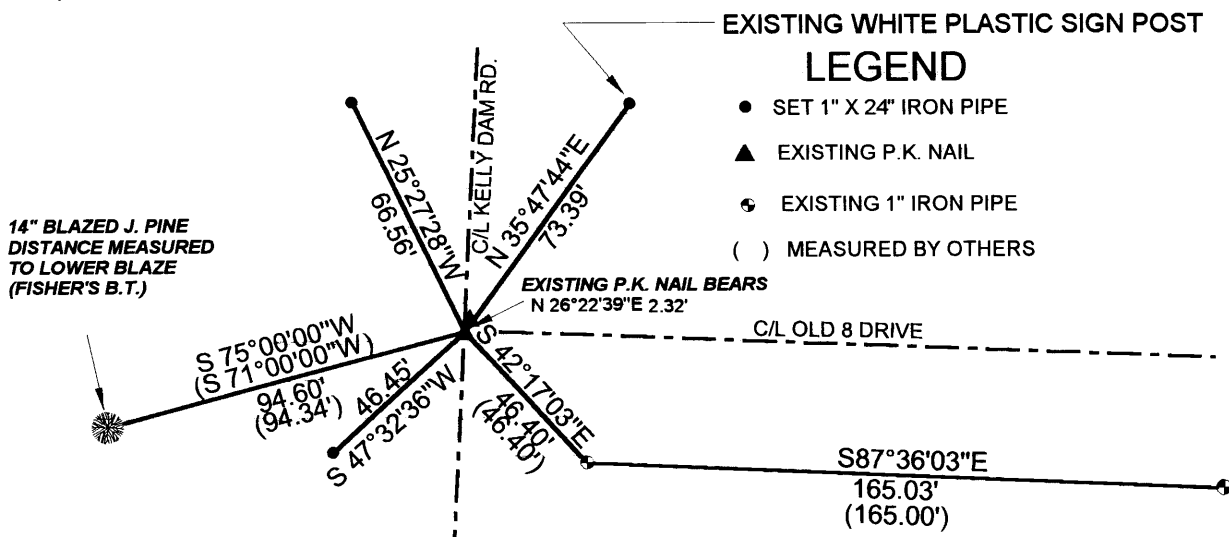
(b) (f) (g) (h) Description of monument found at this corner and if it was accepted, state all evidence (material, testimonial, occupational, plats, records, other monuments) used as a basis for accepting. If not accepted or if nothing was found, state evidence used as basis for establishing location. If reestablished through lost corner proportionate methods, indicate all monuments, distances and directions used to establish. Indicate type of monument found or set and sign post.

NOTE: This corner was referenced out in advance of road construction as an act of preserving survey evidence. This corner has not been tested for its accuracy during the course of this preservation and it is recommended that the corner be evaluated for its validity by those using it.

-Corner position was referenced from survey information contained in county survey file number B592. See corner sheet V-21 by John Fisher dated 01/84 for additional information. Referenced put position before road construction and went back to check references and referenced monument as shown below.

-DECEMBER 2008- Kevin Bixby found 2 P.K. Nails and witnessed as shown below.

(c) (d) (e) Plan view of corner with ties to at least 4 witness monuments. If in disagreement with previously established corner, show the distances between the two corners and also indicate the ties to the disputed corner.



(i) I, KEVIN P. BIXBY

(type or print name) certify that the corner location on this record was determined by me or under my direction and control and that this U.S. Public Land Survey Monument Record is correct and complete to the best of my knowledge and belief.



Kevin P. Bixby
Signature

01/07/09
Date 3605260000

Stamp

Index No. V-21