

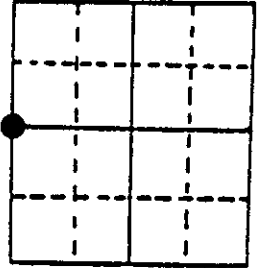
U.S. PUBLIC LAND SURVEY MONUMENT RECORD

Note: This form is intended and designed to fulfill all requirements of Wisconsin Administrative Code, Chapter A-E 7.08 U.S. Public Land Survey Monument Record (3) (a) (b) (c) (d) (e) (f) (g) (h) (i). An additional sheet may be added if necessary to conform with said requirements.

(a) Corner location: Township 36 North
 Range 5 East/West

Town/City/Village Little Rice

County Oneida



Section 25

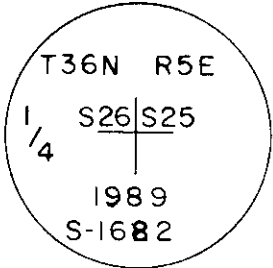
(b) (f) (g) (h) Description of monument found at this corner and if it was accepted, state all evidence (material, testimonial, occupational, plats, records, other monuments) used as a basis for accepting. If not accepted or if nothing was found, state evidence used as basis for establishing location. If reestablished through lost corner proportionate methods, indicate all monuments, distances and directions used to establish. Indicate type of monument found or set and sign post.

Reestablished Quarter Section Corner by proportional measurement. Total distance from SW Section corner to NW Section corner of Section 25, is 5350.88'. Set Quarter Section Corner 2675.44' intermediate. Someones rail road spike bears N83-39-02E 14.64' of reestablished position. Could not find any records or documents on this rail road spike.

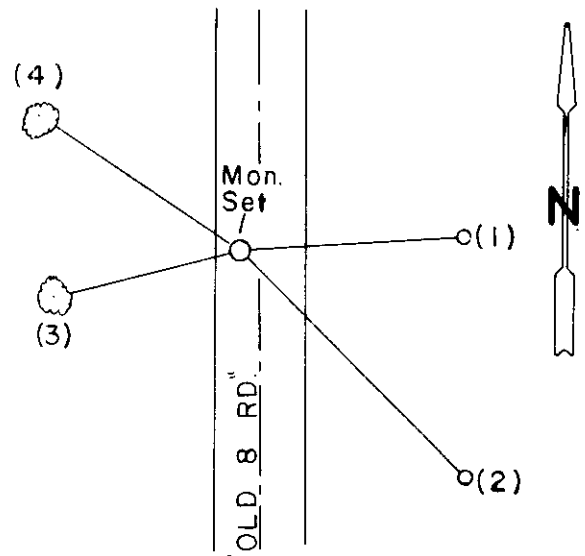
Lester Schmit, Registered Land Surveyor used the same method in subdividing the NW 1/4 Section 25.

(c) (d) (e) Plan view of corner with ties to at least 4 witness monuments. If in disagreement with previously established corner, show the distances between the two corners and also indicate the ties to the disputed corner.

Monument Set



- (1) 1-1/2" I.P., N86°E, 47.55'
- (2) 1-1/2" I.P., S45°E, 67.42'
- (3) 7" Jack Pine, S75°W, 39.71'
- (4) 4" Jack Pine, N57°W, 50.30'



(i) I, Glen Barker
 (type or print name) certify that the corner location on this record was determined by me or under my direction and control and that this U.S. Public Land Survey Monument Record is correct and complete to the best of my knowledge and belief.

Glen Barker
 Signature

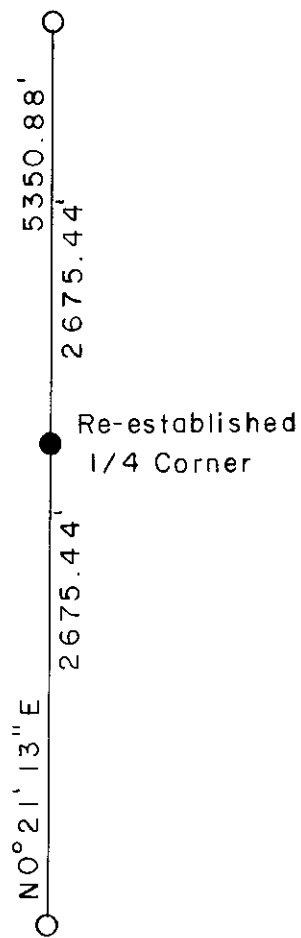
12/22/89
 Date



Index No. T-21

3605262000

23 | 24
26 | 25



26 | 25
35 | 36