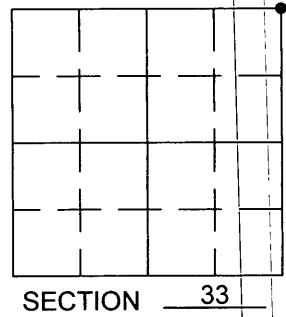
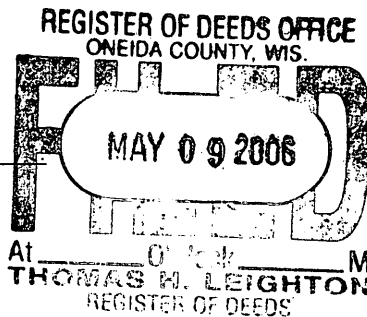


U.S PUBLIC LAND SURVEY MONUMENT RECORD

Note: This form is intended and designed to fulfill all requirements of Wisconsin Administrative Code, Chapter A-E 7.08 U.S. Public Land Survey Monument Record (3) (a) (b) (c) (d) (e) (f) (g) (h) (i). An additional sheet may be added if necessary to conform to said requirements.

(a) Corner location: Township 36 North
 Range 5 East
 Town/City/Village LITTLE RICE
 County ONEIDA

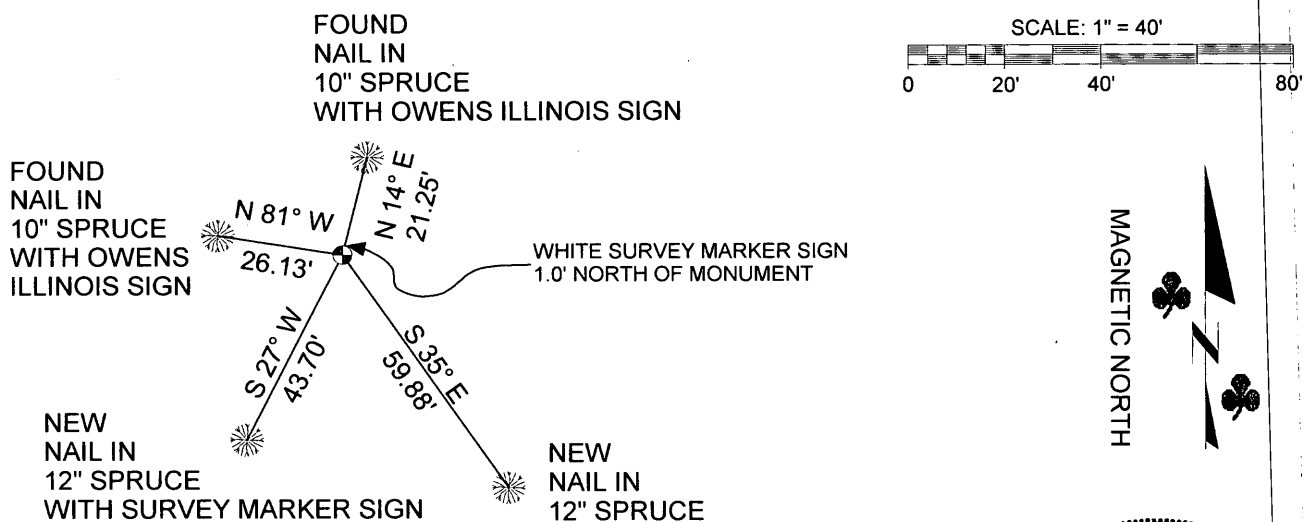


(b) (f) (g) (h) Description of monument found at this corner and if it was accepted, state all evidence (material, testimonial, occupational, plats, records, other monuments) used as a basis for accepting. If not accepted or if nothing was found, state evidence used as basis for establishing locations. If reestablished through lost corner proportionate methods, indicate all monuments, distances and directions used to establish. Indicate type of monument found or set and sign post.

June 4th, 1863 , Joseph H. Jenkins, Set Post Corner To Sections 27, 28, 33 and 34 with Bt's: Tamarack 12' N 55 W 2 Links
 Tamarack 10' N 18 E 24 Links

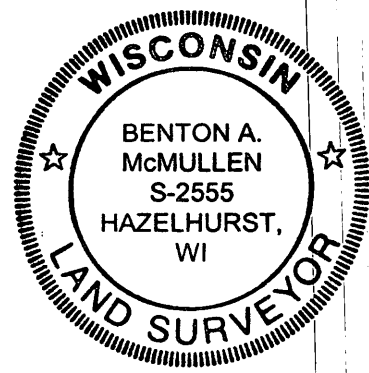
November, 2004, I found Section Corner Post and 2 blazed Bt's with Owens Illinois Tag on them in a spruce swamp. I replaced the Found Wood Post with a 2 1/2" Capped Oneida County Aluminum Monument 5' in length (stamped to identify location). I established 2 new Bt's as References as shown below.

(c) (d) (e) Plan view of corner with ties to at least 4 witness monuments. If in disagreement with previously established corner, show the distances between the two corners and also indicate the ties to the disputed corner.



(i) I, Benton A. McMullen certify that the corner location on this record was determined by me or under my direction and control and that this U.S. Public Land Survey Monument Record is correct and complete to the best of my knowledge and belief.

Benton A. McMullen 5/5/06
 Signature Date



360528 0000
 28

V-13