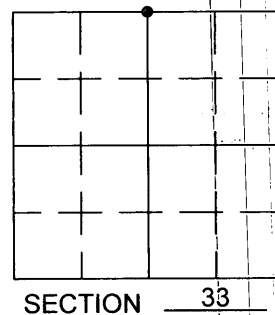
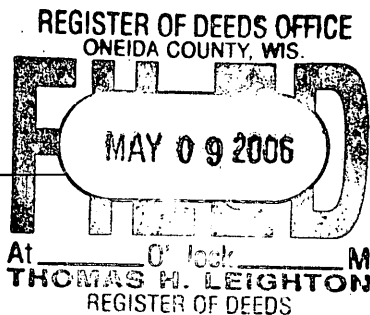


# U.S PUBLIC LAND SURVEY MONUMENT RECORD

Note: This form is intended and designed to fulfill all requirements of Wisconsin Administrative Code, Chapter A-E 7.08 U.S. Public Land Survey Monument Record (3) (a) (b) (c) (d) (e) (f) (g) (h) (i). An additional sheet may be added if necessary to conform to said requirements.

(a) Corner location: Township 36 North  
 Range 5 East  
 Town/City/Village LITTLE RICE  
 County ONEIDA

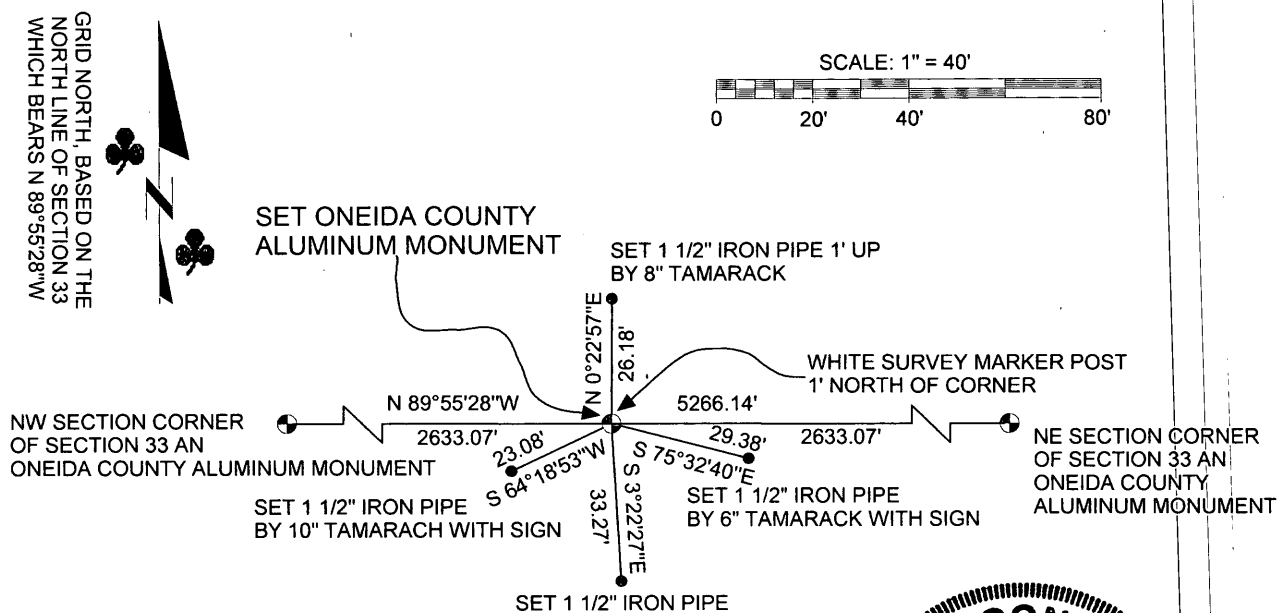


(b) (f) (g) (h) Description of monument found at this corner and if it was accepted, state all evidence (material, testimonial, occupational, plats, records, other monuments) used as a basis for accepting. If not accepted or if nothing was found, state evidence used as basis for establishing locations. If reestablished through lost corner proportionate methods, indicate all monuments, distances and directions used to establish. Indicate type of monument found or set and sign post.

June 6th, 1863 , Joseph H. Jenkins, Set 1/4 Section Post with Bt's: Tamarack 6" N 21 W 11 Links  
 Tamarack 6" S 45 W 11 Links

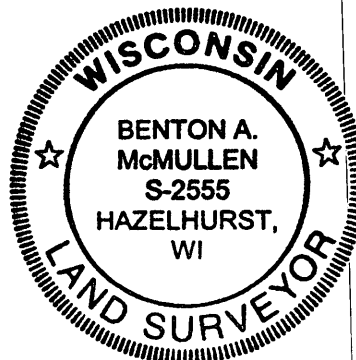
November, 2004, I found no evidence of 1/4 Post or any accessories in a large swampy area with sparse tamarack trees and stream running through it. After an extensive search, I determined this corner to be lost and reestablished the corner position through use of single proportionate measurement. I set a 2 1/2" Oneida County Aluminum Monument 30" in length (stamped to identify location) and established References as shown below. Do to the condition of the trees surrounding the corner, I set four 1 1/2" iron pipe to witness the corner.

(c) (d) (e) Plan view of corner with ties to at least 4 witness monuments. If in disagreement with previously established corner, show the distances between the two corners and also indicate the ties to the disputed corner.



(i) I, Benton A. McMullen certify that the corner location on this record was determined by me or under my direction and control and that this U.S. Public Land Survey Monument Record is correct and complete to the best of my knowledge and belief.

*Benton A. McMullen*  
 Signature Date 5/5/06



3605280020

7-11