

U.S. PUBLIC LAND SURVEY MONUMENT RECORD

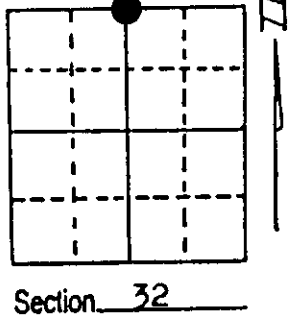
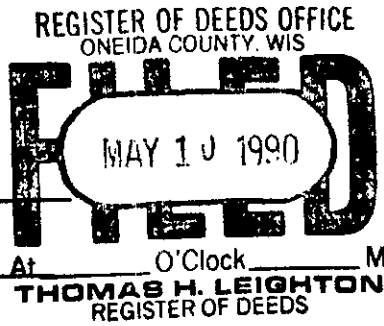
Note: This form is intended and designed to fulfill all requirements of Wisconsin Administrative Code, Chapter A-E 7.08 U.S. Public Land Survey Monument Record (3) (a) (b) (c) (d) (e) (f) (g) (h) (i). An additional sheet may be added if necessary to conform with said requirements.

(a) Corner location: Township 36 North

Range 5 East

Town of Little Rice

County of Oneida



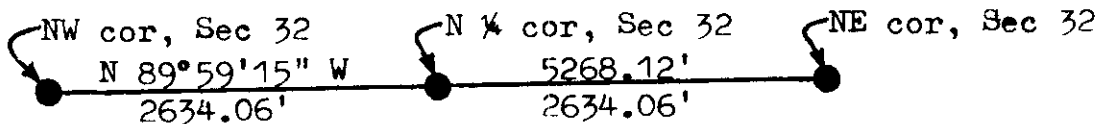
Section 32

(b) (f) (g) (h) Description of monument found at this corner and if it was accepted, state all evidence (material, testimonial, occupational, plats, records, other monuments) used as a basis for accepting. If not accepted or if nothing was found, state evidence used as basis for establishing location. If reestablished through lost corner proportionate methods, indicate all monuments, distances and directions used to establish. Indicate type of monument found or set and sign post.

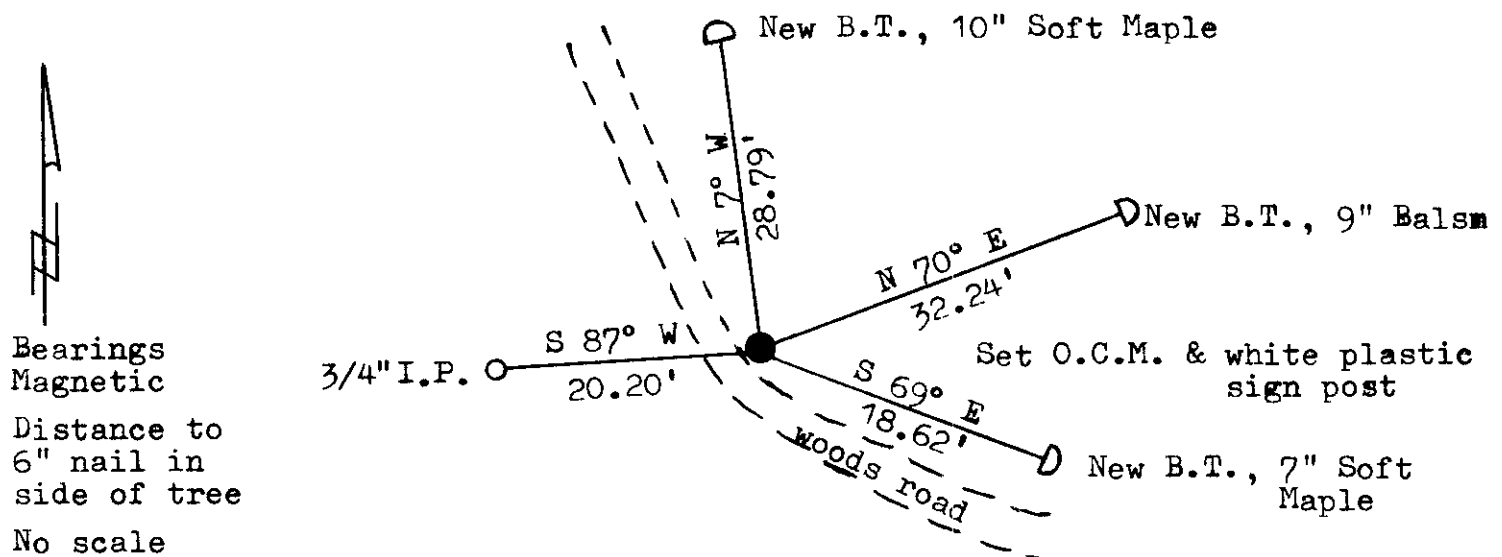
June 1863, Orig. cor. estab. by Joseph H. Jenkins West corrected between 29 & 32..... 39.80 set 1/4 post for cor. to Sections 29 & 32, B.T.s Hemlock 12 N 66 W 40; Hemlock 12 S 16 E 49

April 1989, I found no evidence of the location of this corner so determined it lost. I established the location for the corner by single proportion measurement between the 2 Section Corners. I set a 2" x 30" Oneida County Capped Monument for the corner & witnessed it as shown below.

Single proportion to set corner:



(c) (d) (e) Plan view of corner with ties to at least 4 witness monuments. If in disagreement with previously established corner, show the distances between the two corners and also indicate the ties to the disputed corner.



Bearings Magnetic
Distance to 6" nail in side of tree
No scale

(i) I, Lester J. Schmit R.L.S. 1192
(type or print name) certify that the corner location on this record was determined by me or under my direction and control and that this U.S. Public Land Survey Monument Record is correct and complete to the best of my knowledge and belief.

Lester J. Schmit
Signature

3 May 1990
Date



3605290020

Index No. V-7-1