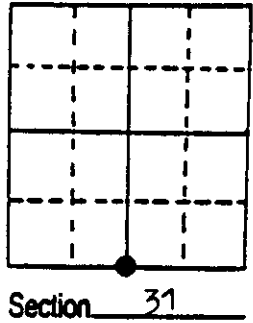


U.S. PUBLIC LAND SURVEY MONUMENT RECORD

Note: This form is intended and designed to fulfill all requirements of Wisconsin Administrative Code, Chapter A-E 7.08 U.S. Public Land Survey Monument Record (3) (a) (b) (c) (d) (e) (f) (g) (h) (i). An additional sheet may be added if necessary to conform with said requirements.

(a) Corner location: Township 36 North
 Range 5 East
 Town of Little Rice
 County of Oneida

REGISTER OF DEEDS OFFICE
 ONEIDA COUNTY, WIS.
FILED
 MAY 10 1990
 At O'Clock M
THOMAS H. LEIGHTON
 REGISTER OF DEEDS



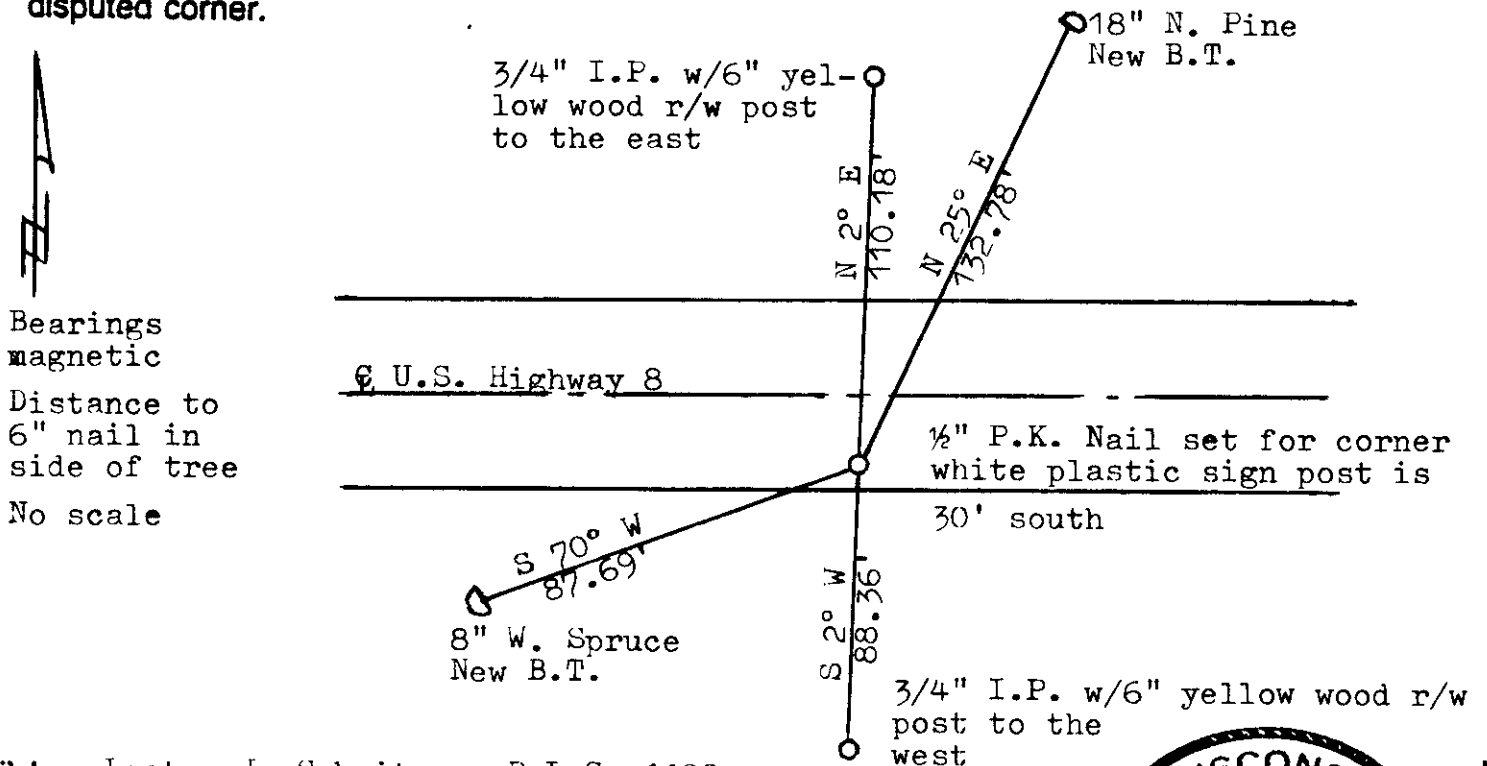
(b) (f) (g) (h) Description of monument found at this corner and if it was accepted, state all evidence (material, testimonial, occupational, plats, records, other monuments) used as a basis for accepting. If not accepted or if nothing was found, state evidence used as basis for establishing location. If reestablished through lost corner proportionate methods, indicate all monuments, distances and directions used to establish. Indicate type of monument found or set and sign post.

1 September 1860, Orig. cor. estab. by Alfred Millard West between 6 & 31....
 40.00 set 1/4 sec post for cor. to Section 6 & 31, B.T.s Sugar 12 North 3 &
 Hemlock 12 S 32 E 32

October 1932, On route location survey for D.O.T., 1/4 sec. cor. is called for being 12' ± south of the centre-line of the highway (U.S. Highway 8).

April 1990, Found no iron for corner location. Using 6" diameter yellow wood right-of-way post north & south for alignment east & west and 12' south of the centre-line of U.S. Highway 8 for alignment north & south to establish the corner location. Set a 1/2" P.K. Nail in the concrete surface for the corner. Stationing distance from SW cor. to S 1/4 cor. is within 2' of the distance called for on D.O.T. map. Witnessed it as shown below.

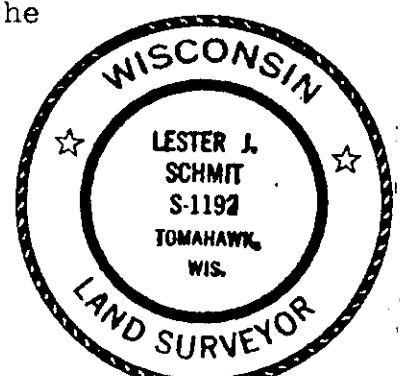
(c) (d) (e) Plan view of corner with ties to at least 4 witness monuments. If in disagreement with previously established corner, show the distances between the two corners and also indicate the ties to the disputed corner.



Bearings magnetic
 Distance to 6" nail in side of tree
 No scale

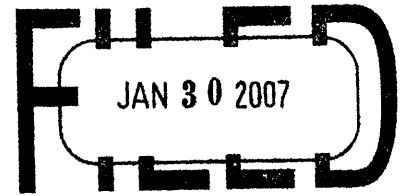
(i) I, Lester J. Schmit R.L.S. 1192
 (type or print name) certify that the corner location on this record was determined by me or under my direction and control and that this U.S. Public Land Survey Monument Record is correct and complete to the best of my knowledge and belief.

Lester J. Schmit Signature 3 May 1990 Date



Index No. 2 - 3

3605310020



At _____ O'Clock _____ M
THOMAS H. LEIGHTON
REGISTER OF DEEDS

This form is intended to fulfill the requirements of Chapter A-E7.08 (3)(a) thru (i) U.S. Public Land Survey Monument Location Record, Wisconsin Administrative Code. Use the reverse side of form for continuation.

U.S. PUBLIC LAND SURVEY MONUMENT LOCATION RECORD

USPLS CORNER: SOUTH 1/4 SECTION: 31 TOWNSHIP: 36 NORTH RANGE: 5 EAST

NAME OF WATERWAY FOR M.C. CORNER : N/A SECTION LINE: N/A

~~(CITY/VILLAGE)~~(TOWN) OF: LITTLE RICE COUNTY OF: ONEIDA

Description of monument found or placed and all other evidence used as the basis for monument location; including monuments and measurements required if the corner location was reestablished by lost corner proportionate methods. Also indicate name of the original surveyor, original survey date and the corner monument, bearing trees, witness or other reference monuments established, including measured bearing and distance ties, from available survey records.

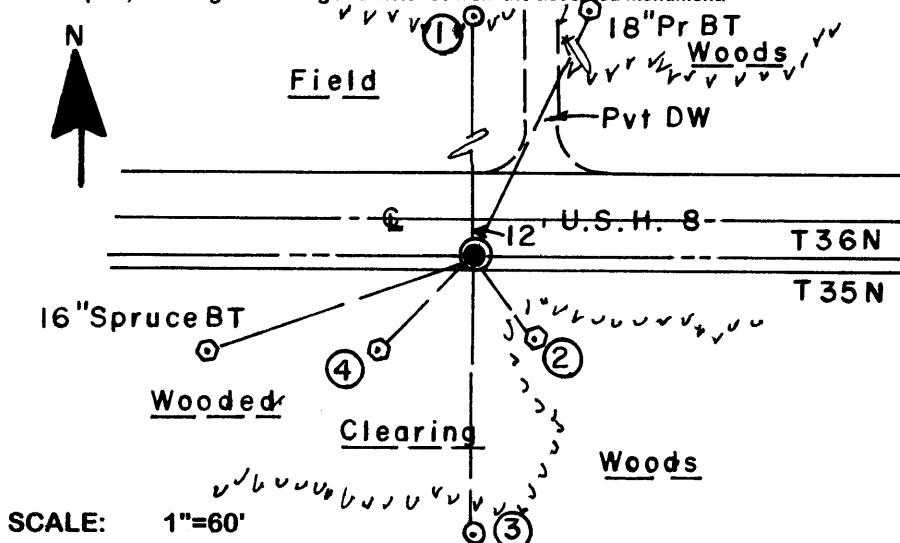
In September 1860, Alfred Millard set a wood post as original 1/4 corner and noted OBTs: a 12" Maple North 3 links and a 12" Hemlock S32°E 32 links; all are now obliterated.

In April 1990, Lester J. Schmit found no iron at corner location and reestablished with a 1/2" PK nail 12' South of USH 8 pavement centerline and on a right line between 6" dia. yellow wood R/W posts North and South per 1932 route survey data by Wisconsin D.O.T. and noted new witnesses: a 3/4" iron pipe 6" West of 6" dia. yellow wood R/W post N02°E 110.18'; an 18" Pr N25°E 132.78'; a 3/4" iron pipe 6" East of yellow wood R/W post S02°W 88.36' and an 8" Spruce S70°W 87.69', per his USPLS Survey Monument Record dated May 3, 1990 as filed in Oneida County records.

On September 7, 2006 I found Schmits 3/4" iron pipe North, his NE Pr with large lower blaze and a Lincoln County DND sign on upper face, which I used as a corner position check only due to long tie distance, his 3/4" iron pipe South and his 8" Spruce SW as a 16" with lower blaze shut, which I used as a corner position check only. I could not find his PK nail in pavement so I reset the corner with a 1/4" dia. by 2.5" long Mag nail into highway pavement on a right line between the record 3/4" iron pipes North and South at prorated measured as/recorded as distances for new ties noted below. The yellow wood R/W posts have been replaced with a steel 'U' channel post with R/W sign at top near each 3/4" witness iron pipe.

This corner reestablished with approval of Oneida County Surveyor Michael Romportl. There were no direct witnesses.

Plan view map of monument location with bearing and distance ties to a minimum of four(4) described witness or reference monuments of concrete, natural stone, iron, live bearing trees or equivalent material. If applicable, also show a minimum of two(2) bearing and distance ties to any other monument found and not accepted; including the bearing and distance from the accepted monument.



WITNESS MONUMENT TIES:

- ① Old 3/4" dia. uncapped iron pipe monument found North 110.13'.
- ② New 13" Pr BT S35°E 32.94'.
- ③ Old 3/4" dia. uncapped iron pipe monument found South 88.33'.
- ④ New 9" Fir S45°W 41.15'.

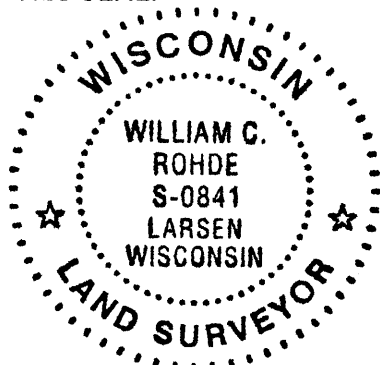
No standard 'T' marker post set.

I also set a 1/4" dia. by 2.5" long Mag nail at South and North edges of the highway pavement on a right line between Witness Monuments #1 & #3.

SCALE: 1"=60'

Unless otherwise indicated, all bearing tree ties are to a .25" dia. by 2.5" long PK nail with a 1.25" dia. steel washer driven into unblazed right face and a .25" dia. by 2.5" long PK nail with a 2" dia. steel washer stamped BT is also driven into unblazed face of bearing tree at DBH; the basis for measured bearings is by compass to nearest degree and all tie distances are measured horizontal by steel tape corrected to nearest 1/100th feet at standard temperature of 68° F.

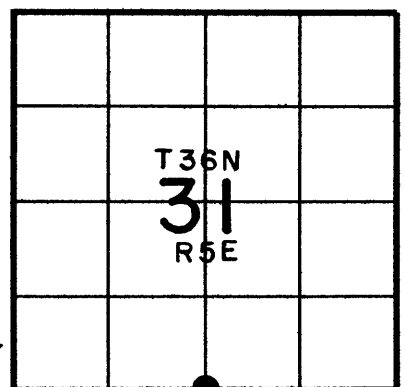
RLS SEAL:



LAND SURVEYOR CERTIFICATE:

I, William C. Rohde, hereby certify that I am duly licensed as a Professional Land Surveyor in the State of Wisconsin; that this USPLS monument location was determined by me and/or under my direct supervision and control; and that this U.S. Public Land Survey Monument Location Record is true and correct to the best of my knowledge and belief.

Signed: *William C. Rohde*
William C. Rohde RLS 841



SECTION LOCATION MAP

INDEX NO. 23
3605310020