

U.S. PUBLIC LAND SURVEY MONUMENT RECORD

Note: This form is intended and designed to fulfill all requirements of Wisconsin Administrative Code A-E 7.08 3) (a-i).

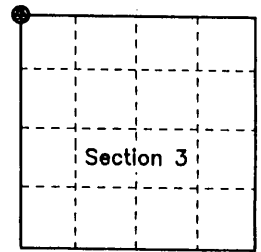
(a) CORNER LOCATION

Corner: Section Corner
 Section: 3
 Township: T 35 N
 Range: R 05 E
 Town: Wilson Township
 County: Lincoln

REGISTER OF DEEDS OFFICE
 ONEIDA COUNTY, WIS. COUNTY GRID COORDINATES

RECORDED
 MAY 15 2006

At 12 O'Clock 1 M
 THOMAS M. LEIGHTON
 REGISTER OF DEEDS



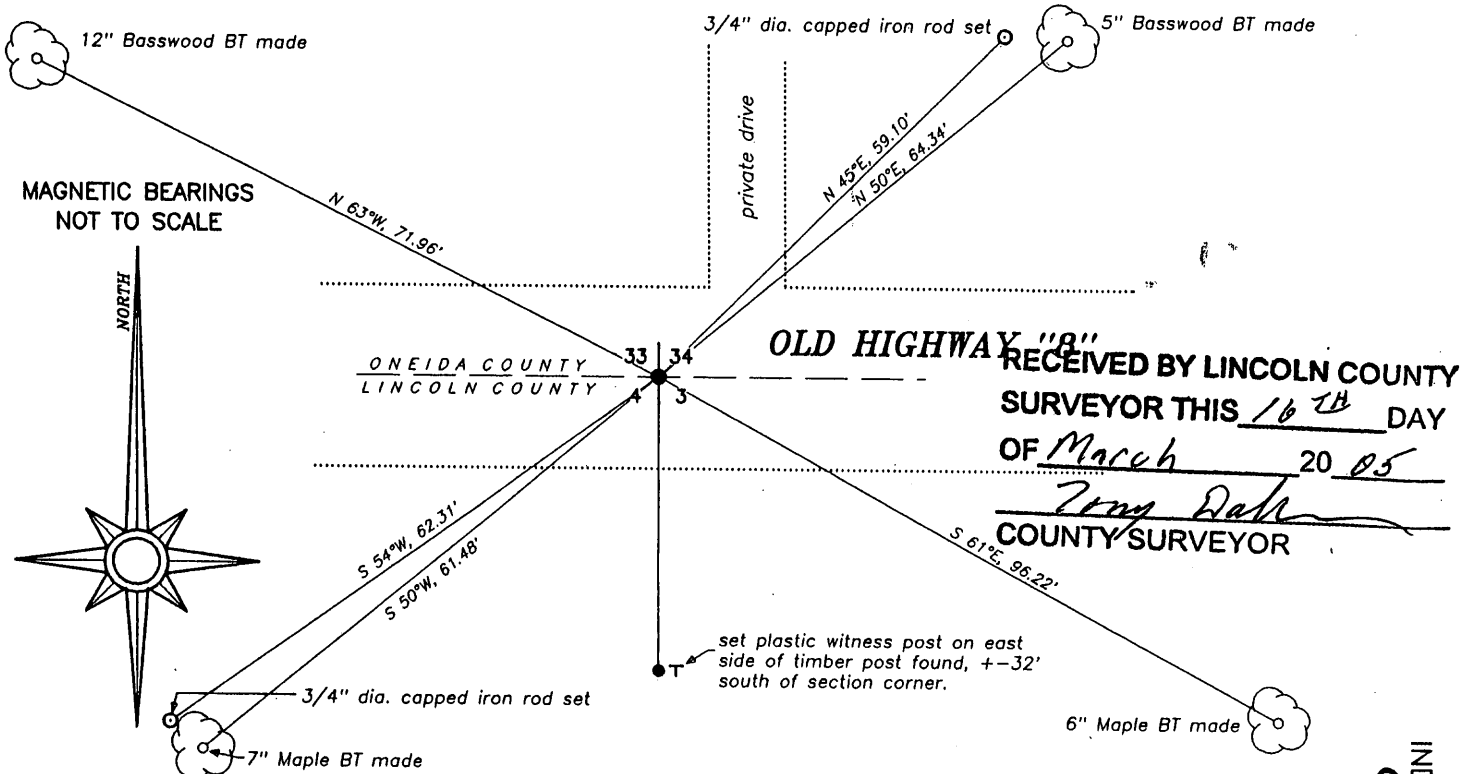
(b) HISTORY OF ORIGINAL CORNER ESTABLISHMENT

Original Surveyor: Alfred Millard
 Date of Survey: Commenced August, 1860
 Completed September, 1860
 Original Bearing Trees: Unknown

(f)(g)(h) Description of monument found at this corner and if it was accepted, state all evidence (material, testimonial, occupational, plats, records, other monuments) used as a basis for establishing location. If reestablished through last corner proportionate methods, indicate all monuments, distances and directions used to establish. Indicate type of monument and sign post found or set.

November 16, 2004 - David A. Konopacky, R.L.S. 2566, during the course of the subdivision of Section 3, recovered the bottom portion of a Berntsen monument near the centerline of Old Highway "8", approximately 12" below the road grade. I set a 30" long Berntsen monument with a 4" diameter cap stamped to identify its location in place of the broken monument. I found no history or notes of when this corner location was established with the Berntsen monument. I found a timber post approximately 32' south of the section corner. I made four new bearing trees and set two 3/4" diameter iron rods with aluminum cap as shown in the diagram below. Distances to bearing trees measured to a nail set in the side of tree.

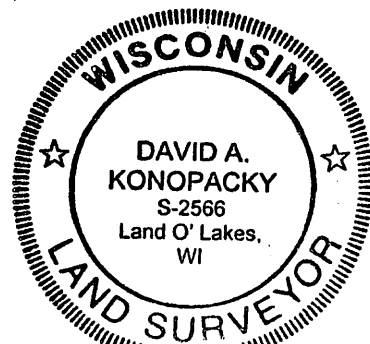
(c)(d)(e) Plan view of corner with ties to at least 4 witnesses. If in disagreement with previously established corner, show the distance between the two corners and also indicate the tie to the disputed corner.



(i) I, David A. Konopacky, Registered Land Surveyor No. 2566, hereby certify that the corner location on this record was referenced by me or under my direction and control and that this U.S. Public Land Survey Monument Record is correct and complete to the best of my knowledge and belief.

[Signature]
 Signature

11-25-04
 Date



INDEX NO. 213
 Copy from Lincoln CTN

360533 00.00