

U.S. PUBLIC LAND SURVEY MONUMENT RECORD

Note: This form is intended and designed to fulfill all requirements of Wisconsin Administrative Code A-E 7.08 3) (a-i).

(a) CORNER LOCATION

Corner: Section Corner
 Section: 3
 Township: T 35 N
 Range: R 05 E
 Town: Wilson Township
 County: Lincoln

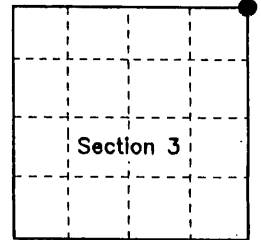
REGISTER OF DEEDS OFFICE
 ONEIDA COUNTY, WIS.

COUNTY GRID COORDINATES

MAY 15 2006

Datum:

At O'Clock M
THOMAS H. LEIGHTON
 REGISTER OF DEEDS



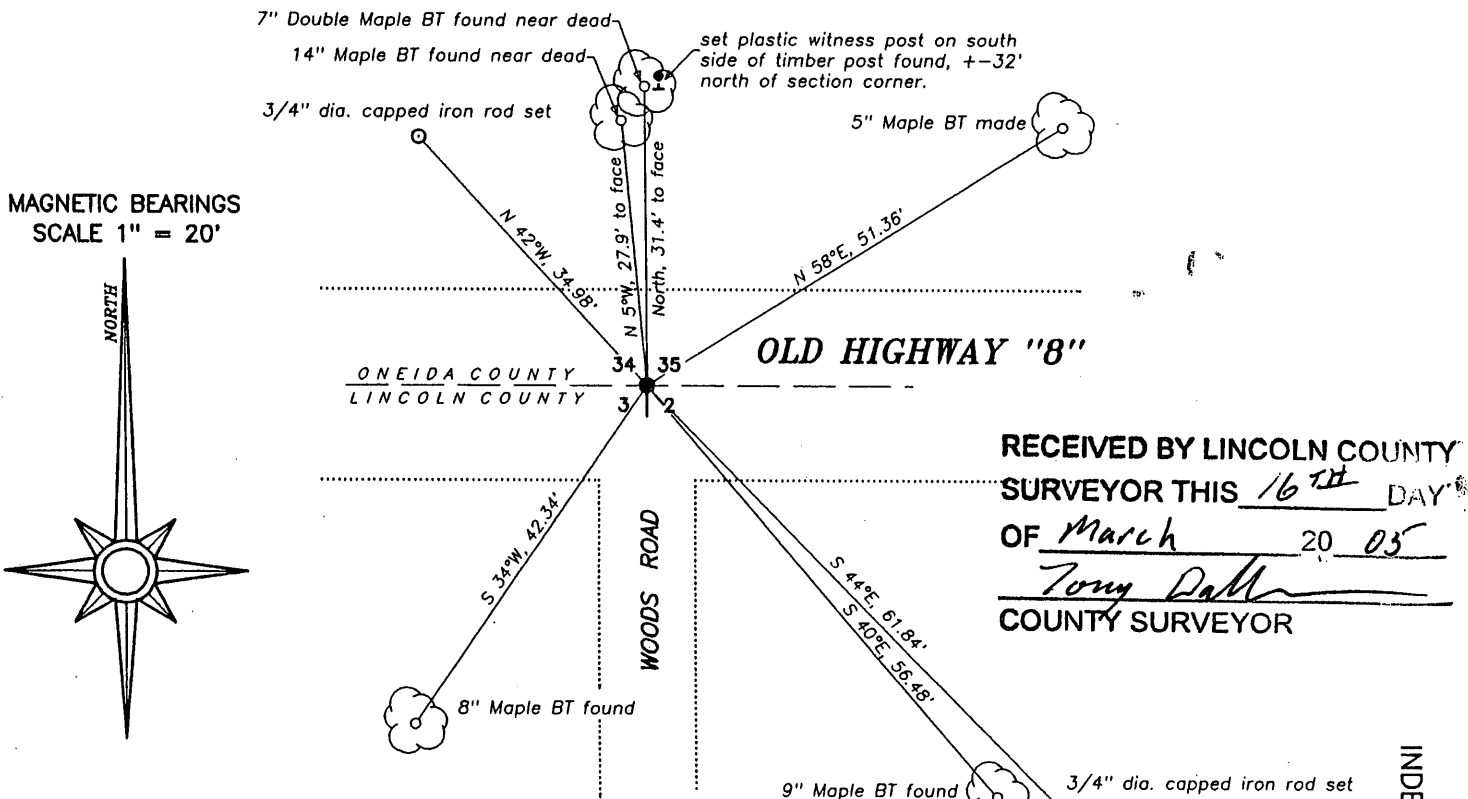
(b) HISTORY OF ORIGINAL CORNER ESTABLISHMENT

Original Surveyor: Alfred Millard
 Date of Survey: Commenced August, 1860
 Completed September, 1860
 Original Bearing Trees: Unknown

(f)(g)(h) Description of monument found at this corner and if it was accepted, state all evidence (material, restitonal, occupational, plats, records, other monuments) used as a basis for establishing location. If reestablished through last corner proportionate methods, indicate all monuments, distances and directions used to establish. Indicate type of monument and sign post found or set.

November 16, 2004 – David A. Konopacky, R.L.S. 2566, during the course of the subdivision of Section 3, recovered the bottom portion of a Berntsen monument near the centerline of Old Highway "8", approximately 16" below the road grade. I set a 30" long Berntsen monument with a 4" diameter cap stamped to identify its location in place of the broken monument. I found no history or notes of when this corner location was established with the Berntsen monument. I found a timber post on the north side of Old Highway "8" and four existing bearing trees. I made one new bearing trees and set two 3/4" diamter iron rods with aluminum cap as shown in the diagram below. Distances to bearing trees measured to a nail set in the side of tree unless distance is noted to face of blaze. I set a plastic witness post 32' north of corner.

(c)(d)(e) Plan view of corner with ties to at least 4 witnesses. If in disagreement with previously established corner, show the distance between the two corners and also indicate the tie to the disputed corner.



RECEIVED BY LINCOLN COUNTY
 SURVEYOR THIS 16TH DAY
 OF March 20 05
Tony Dalk
 COUNTY SURVEYOR

(i) I, David A. Konopacky, Registered Land Surveyor No. 2566, hereby certify that the corner location on this record was referenced by me or under my direction and control and that this U.S. Public Land Survey Monument Record is correct and complete to the best of my knowledge and belief.

[Signature]
 Signature

11-25-04
 Date



INDEX NO. 117
 Copy from
 Lincoln City

3605340000