

This form is intended to fulfill the requirements of Chapter A-E 7.08 (3)(a) thru (i) U.S. Public Land Survey Monument Location Record, Wisconsin Administrative Code. Use the reverse side of form for continuation.

U.S. PUBLIC LAND SURVEY MONUMENT LOCATION RECORD

USPLS CORNER: WEST 1/4 CORNER SECTION: 36 TOWNSHIP: 36 NORTH RANGE: 5 EAST

NAME OF WATERWAY FOR M.C. CORNER : N/A SECTION LINE: N/A

(CITY)(VILLAGE)(TOWN) OF: LITTLE RICE COUNTY OF: ONEIDA

Description of monument found or placed and all other evidence used as the basis for monument location; including monuments and related measurements required if the corner location was reestablished by lost corner proportionate methods. Also indicate name of original surveyor, original survey date and the corner monument, bearing trees, witness or other reference monuments established; including measured bearing and distance ties, from available records.

Found and accepted an older 1.25" dia. iron pipe with uncapped broken out top 4" below existing gravelled roadway about 1 foot West of centerline; I left the iron pipe in place for new ties to six BTs West of the corner as no suitable BTs found within 100 feet East of the corner. No iron reference monuments were set on a right line thru the corner as any monument set to the East of corner would be subject to disturbance due to ongoing land clearing activity.

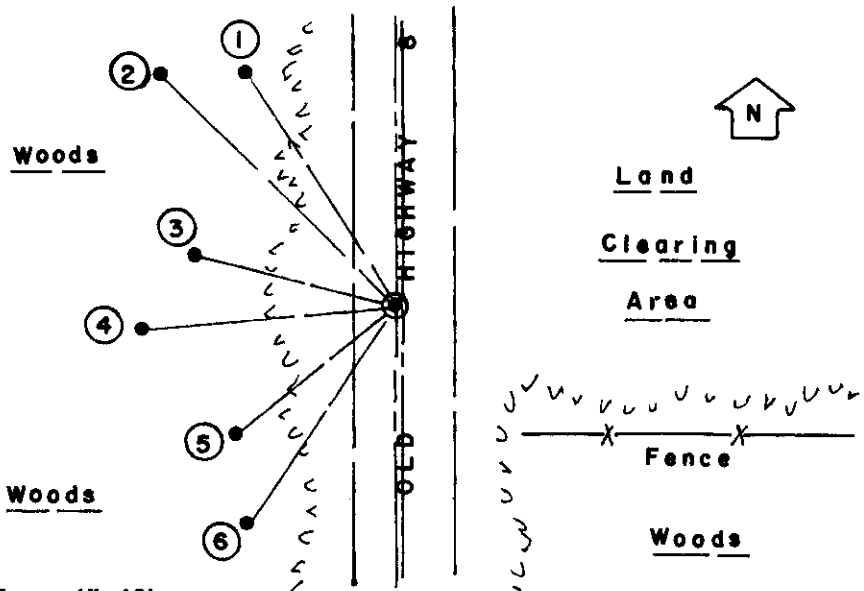
In June 1863, Joseph H. Jenkins/GLO set a wood post as the original corner and marked OBTs: an 8" Tamarack S72°W 3 links and a 10" Pw N65 °E 17? links; all now gone.

In September 1965, James G. Griffin/RLS 755 indicates an apparent iron pipemonument symbol per Plat of Survey filed as B-592 in Oneida County survey records; he also noted a single 10" Pj BT N65°W 31.0', which I found OK as a sawed off stump above plain lower face blaze and measuring notch that I painted blaze orange. His record BT ties checked out OK with compass and tape to the iron pipe monument found in roadway.

No other record evidence was considered applicable. This recovery, requested by Oneida County Surveyor Michael Romportl due to pending town roadway work, was completed on May 16, 2002; there were no direct witnesses.

Standard white poly 'T' marker post set 21.4' West of corner and marked "21.4 Feet East" on post face with black marker.

Plan view map of monument location with bearing and distance ties to a minimum of four(4) described witness or reference monuments of concrete, natural stone, iron, live bearing trees or equivalent material. If applicable, also show a minimum of two(2) bearing and distance ties to any other monument found and not accepted; including the bearing and distance from the accepted monument.



- WITNESS MONUMENT TIES:**
- ① Old 24" Pr BT with upper & lower blaze scars N33°W 57.30'.
 - ② New 10" Mr BT N45°W 67.97" .
 - ③ Old 14" Pj BT with upper blaze scar and lower blaze open with scribing N75°W 42.31'.
 - ④ New 11" Mr BT S85°W 52.50'.
 - ⑤ Old 20" Pw BT with upper and lower blaze scars S51°W 42.63'.
 - ⑥ New West 8" Mr BT of triple S34°W 54.81'.
- An old fenceline leads East 27 feet South of the corner pipe in roadway.

SCALE: 1"=40'

Unless otherwise indicated, all bearing tree ties are to a .25" dia. by 2.5" long PK nail with a 1.25" dia. steel washer driven into unblazed right face and a .25" dia. by 2.5" long PK nail with a 2" dia. steel washer stamped BT is also driven into unblazed face of bearing tree at DBH; the basis for measured bearings is by compass to nearest degree and all tie distances are measured horizontal by steel tape corrected to nearest 1/100th feet at standard temperature of 68° F.

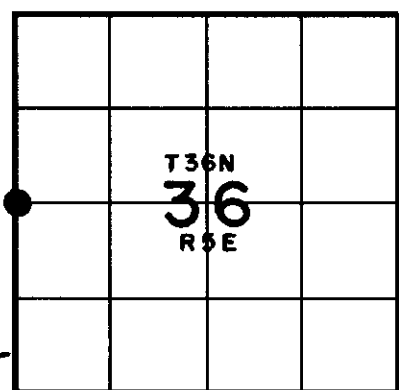
RLS SEAL:



LAND SURVEYOR CERTIFICATE:

I, William C. Rohde, hereby certify that I am duly licensed as a Professional Land Surveyor in the State of Wisconsin; that this USPLS monument location was determined by me and/or under my direct supervision and control; and that this U.S. Public Land Survey Monument Location Record is true and correct to the best of my knowledge and belief.

Signed: *William C. Rohde*
William C. Rohde RLS 841



SECTION LOCATION MAP
INDEX NO. X-21

Date Signed: March 1, 2003

3605 35 2000