

This form is intended to fulfill the requirements of Chapter A-E7.08 (3)(a) thru (i) U.S. Public Land Survey Monument Location Record, Wisconsin Administrative Code. Use the reverse side of form for continuation.

U.S. PUBLIC LAND SURVEY MONUMENT LOCATION RECORD

USPLS CORNER: NORTH WITNESS MC SECTION: 31 TOWNSHIP: 36 NORTH RANGE: 6 EAST
 NAME OF WATERWAY FOR M.C. CORNER: RICE RIVER FLOWAGE SECTION LINE: WEST
 (CITY)(VILLAGE)(TOWN) OF: NOKOMIS COUNTY OF: ONEIDA

Description of monument found or placed and all other evidence used as the basis for monument location; including monuments and measurements required if the corner location was reestablished by lost corner proportionate methods. Also indicate name of the original surveyor, original survey date and the corner monument, bearing trees, witness or other reference monuments established, including measured bearing and distance ties, from available survey records.

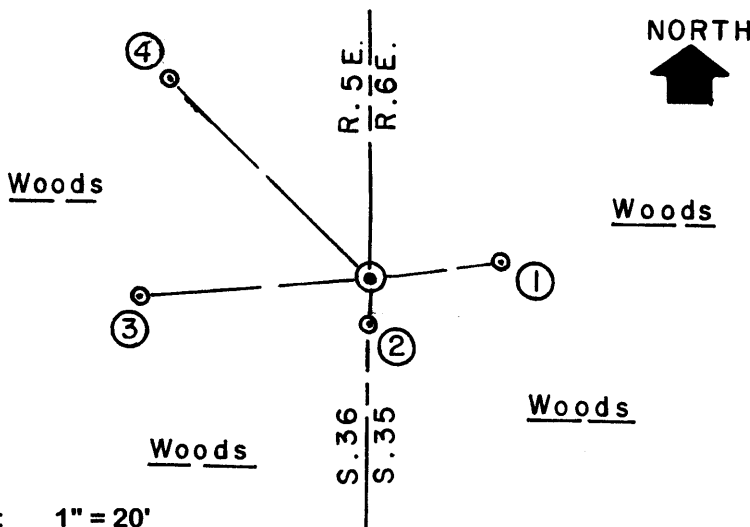
Found and accepted an older undisturbed 2" dia. iron pipe at this corner with uncapped top 2" up; I carefully pulled the 30" long iron pipe and replaced it with a standard 2" dia. by 30" long aluminum pipe monument with a stamped Oneida County cap flush to existing grade. I left old iron pipe flat on grade nearby. A standard white poly 'T' marker post also found 4" South of corner monument location. This corner was also previously located by GPS control survey per Oneida County survey records and is accessible via a foot path southeasterly from residence at Fire No. 1981 Woodsmoke Lane.

No original meander corner post was set by GLO survey as the Rice River Flowage is an impounded waterway by the damming of the Rice River. The corner falls N65°E about 40 feet from the northerly shoreline of the Rice River Flowage bearing S10°E and N20°W this date.

The plat of Woodsmoke subdivision surveyed by John H. Fisher/RLS 836 in 1974 and recorded in Oneida County records, denotes a 2" dia. by 30" long iron pipe set at this corner as an obvious witness MC on the northerly shore of the Rice River Flowage, found and remonumented this date; therefore no other Oneida County survey records were researched.

This corner recovery completed July 15, 2004; there were no direct witnesses.

Plan view map of monument location with bearing and distance ties to a minimum of four(4) described witness or reference monuments of concrete, natural stone, iron, live bearing trees or equivalent material. If applicable, also show a minimum of two(2) bearing and distance ties to any other monument found and not accepted; including the bearing and distance from the accepted monument.



WITNESS MONUMENT TIES:

- ① New 10" Or BT N82°E 13.39'.
- ② Older 11" Pj BT with upper face blaze nearly shut and lower face blaze open with scribing, S04°W 4.65'.
- ③ Older 16" Pj with upper & lower face blazes open & scribed, S85°W 24.13'.
- ④ New NE trunk of 8"/6" double Or BT N45°W 29.48'.

I painted old BT blazes and flagged new BTs, monument and T post blaze orange.

SCALE: 1" = 20'

Unless otherwise indicated, all bearing tree ties are to a .25" dia. by 2.5" long PK nail with a 1.25" dia. steel washer driven into unblazed right face and a .25" dia. by 2.5" long PK nail with a 2" dia. steel washer stamped BT is also driven into unblazed face of bearing tree at DBH; the basis for measured bearings is by compass to nearest degree and all tie distances are measured horizontal by steel tape corrected to nearest 1/100th feet at standard temperature of 68° F.

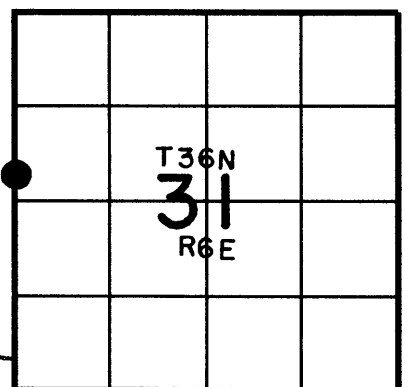
RLS SEAL:



LAND SURVEYOR CERTIFICATE:

I, William C. Rohde, hereby certify that I am duly licensed as a Professional Land Surveyor in the State of Wisconsin; that this USPLS monument location was determined by me and/or under my direct supervision and control; and that this U.S. Public Land Survey Monument Location Record is true and correct to the best of my knowledge and belief.

Signed: *William C. Rohde*
William C. Rohde RLS 841



SECTION LOCATION MAP
INDEX NO. X-25

Date Signed: September 4, 2004

3605362400