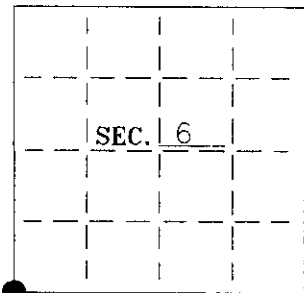


U. S. PUBLIC LAND SURVEY MONUMENT RECORD

Note: This form is intended and designed to fulfill all requirements of Wisconsin Administrative Code-Chapter A-E 7.08 U. S. Public Land Survey Monument Record (3)(a)(b)(c)(d)(e)(f)(g)(h)(i). An additional sheet may be added if necessary to conform with said requirements.

(a) CORNER LOCATION: State Plane Coordinates
SW corner of Sec. 6 X ---
 Township 36 North Y ---
 Range 7 East Datum Base ---
 Town Woodboro County of Oneida



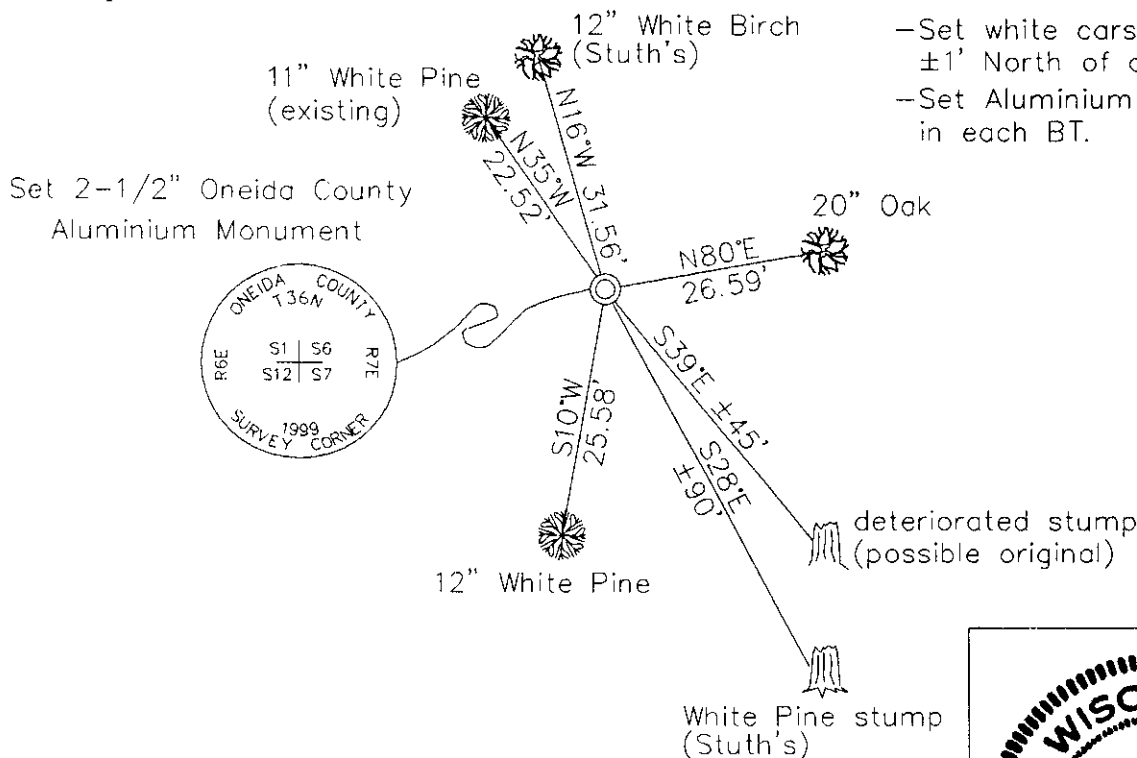
(b) HISTORY OF ORIGINAL CORNER ESTABLISHMENT:

Original Surveyor: Alfred Millard Original B.T.'S
 Date of Survey: Commenced September, 1860 White Pine 24 N61°W, 32 lks
 Completed September, 1860 Hemlock 12 S18°W, 42 lks
 White Pine 28 S83°E, 25 lks
 Maple 12 S37°E, 70 lks (46.2')

(b)(f)(g)(h) Description of monument found at this corner and if it was accepted—state all evidence (material—testimonial—occupation—plats—records—other monuments) used as a basis for accepting. If not accepted or if nothing was found state evidence used as basis for establishing location. If reestablished through lost corner proportionate methods indicate all monuments—distances and directions used to establish. Indicate type of monument and sign post found or set.

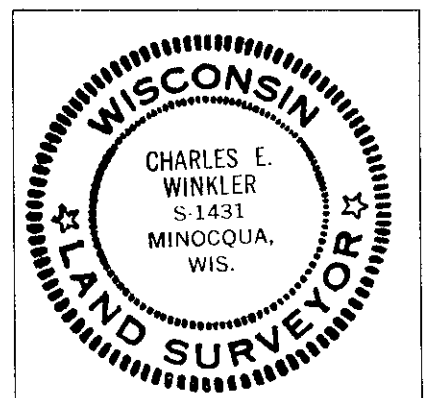
- 1860— Alfred Millard set post at corner to Sections 1, 12, 7, and 6.
- 1956— On a drawing dated 12-9-86 by W.H. Stuth(O-I), he shows a corner by others at Southwest corner of Section 6. BT's: 18" White Pine S28°E, 90.0', 4" White Birch N16°W, 32.0', Orig. P. Stump S39°E, 45.0'.
- 1974— Fisher, Inman, Foltz's field notes indicate they found a 2" iron pipe witnessed by a 9" Birch N16°W, 31.5' (Stuth's).
- 1999— I found a 1-3/4" iron pipe and 2 of Stuth's BT's. I also found the possible original BT stump that Stuth had (very deteriorated). I replaced the 1-3/4" iron pipe with an Oneida County Aluminium Monument and witnessed as shown below.

(c)(d)(e) Plan view of corner with ties to at least 4 witness monuments. If in disagreement with previously established corner—show the distances between the two corners and also indicate the ties to the disputed.



(i) I Charles E. Winkler S-1431 hereby certify that the corner location on this record was determined by me or under my direction and control and that this U.S. Public Land Survey Monument Record is correct and complete to the best of my knowledge and belief.

Charles E. Winkler 1/3/2001
 Signature Foltz and Associates, Inc. Date



INDEX NO. E 1

3606010000