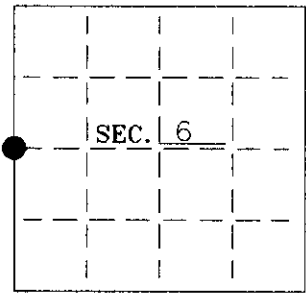


U. S. PUBLIC LAND SURVEY MONUMENT RECORD

Note: This form is intended and designed to fulfill all requirements of Wisconsin Administrative Code-Chapter A-E 7.08 U. S. Public Land Survey Monument Record (3)(a)(b)(c)(d)(e)(f)(g)(h)(i). An additional sheet may be added if necessary to conform with said requirements.

(a) CORNER LOCATION: State Plane Coordinates
W 1/4 corner of Sec. 6 X _____
 Township 36 North Y _____
 Range 7 East Datum Base _____
 Town Woodboro County of Oneida



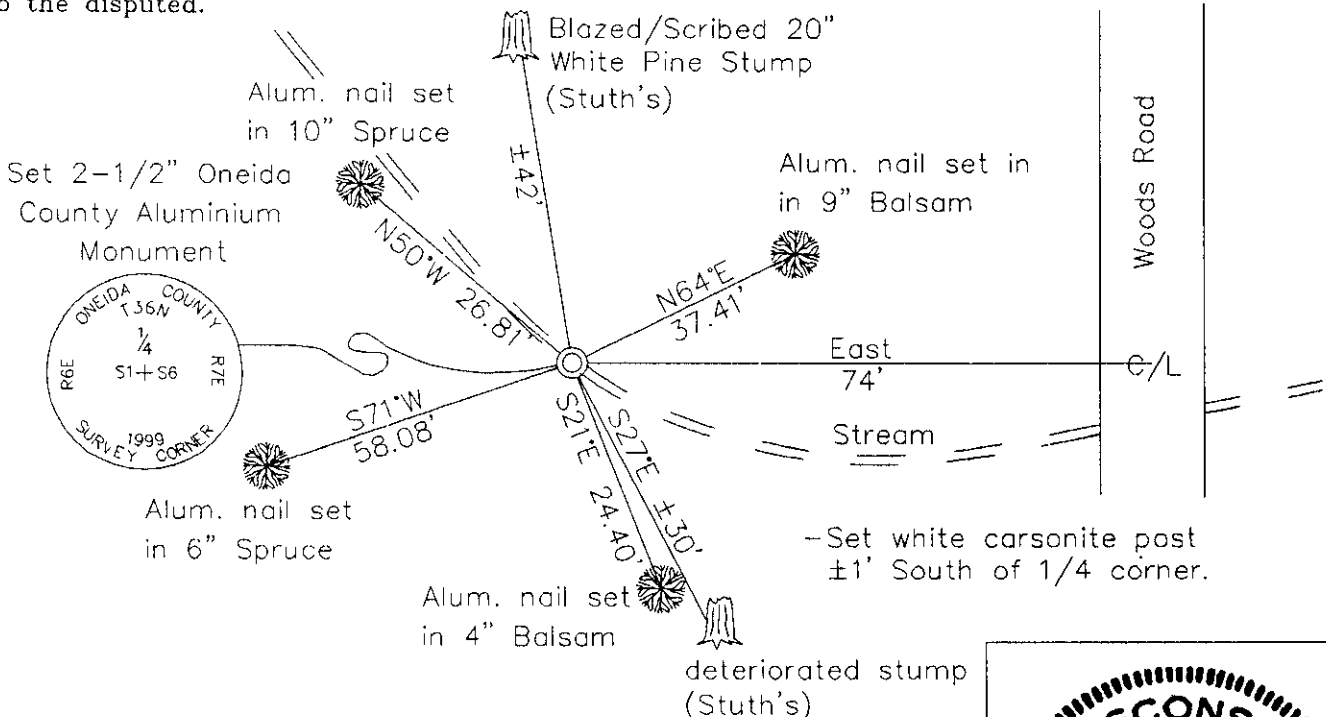
(b) HISTORY OF ORIGINAL CORNER ESTABLISHMENT:
 Original Surveyor: Alfred Millard
 Date of Survey: Commenced September, 1860
 Completed September 1860

Original B.T.'S
 Yellow Birch 10 N61°W, 33 lks
 Spruce 9 N74°E, 35 lks

(b)(f)(g)(h) Description of monument found at this corner and if it was accepted—state all evidence (material—testimonial—occupation—plats—records—other monuments) used as a basis for accepting. If not accepted or if nothing was found state evidence used as basis for establishing location. If reestablished through lost corner proportionate methods indicate all monuments—distances and directions used to establish. Indicate type of monument and sign post found or set.

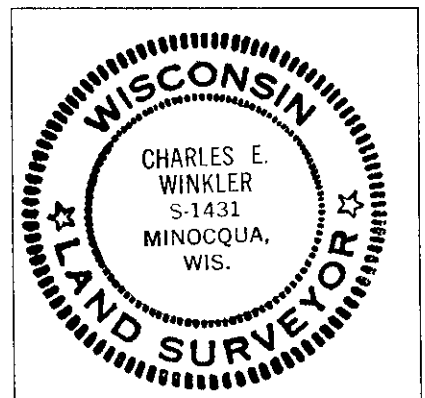
- 1860— Alfred Millard set 1/4 post in stream, 3 lks wide. Stream flows Northwesterly.
- 1956— On a drawing dated 12-9-86 by W.H. Stuth(O-I) shows a corner by others at the West 1/4 corner of Section 6. BT's: W. Pine 20" N9°W, 42.0', W. Pine 10" S23°E, 30.0'.
- 1999— I found a 1-3/4" iron pipe in a shallow stream, ±4' wide that flows Northwesterly. I did not find any original evidence. I found Stuth's BT's, now stumps. I replaced the 1-3/4" iron pipe with an Oneida County Aluminium Monument and made 4 new BT's. (See sketch below).

(c)(d)(e) Plan view of corner with ties to at least 4 witness monuments. If in disagreement with previously established corner—show the distances between the two corners and also indicate the ties to the disputed.



(i) I Charles E. Winkler S-1431
 hereby certify that the corner location on this record was determined by me or under my direction and control and that this U.S. Public Land Survey Monument Record is correct and complete to the best of my knowledge and belief.

Charles E. Winkler 1/3/2001
 Signature Foltz and Associates, Inc. Date



INDEX NO. C 1

3006012000