

U.S. PUBLIC LAND SURVEY MONUMENT LOCATION RECORD

Recorders Data

CORNER: North 1/4 SECTION: 11 TOWNSHIP 36 NORTH RANGE 6 EAST/WEST

FOR M.C. CORNER INDICATE: NAME OF WATERWAY N/A SECTION LINE N/A

(CITY)(VILLAGE)(TOWN) OF: Nokomis COUNTY OF: Oneida

Description of monument found or placed and all other evidence used as a basis for monument location; including all monuments and related measurements required if the corner location is reestablished by lost corner proportionate methods. Also indicate name of original surveyor, survey date, corner monument set and established bearing trees, witness or reference monuments with ties from available records.

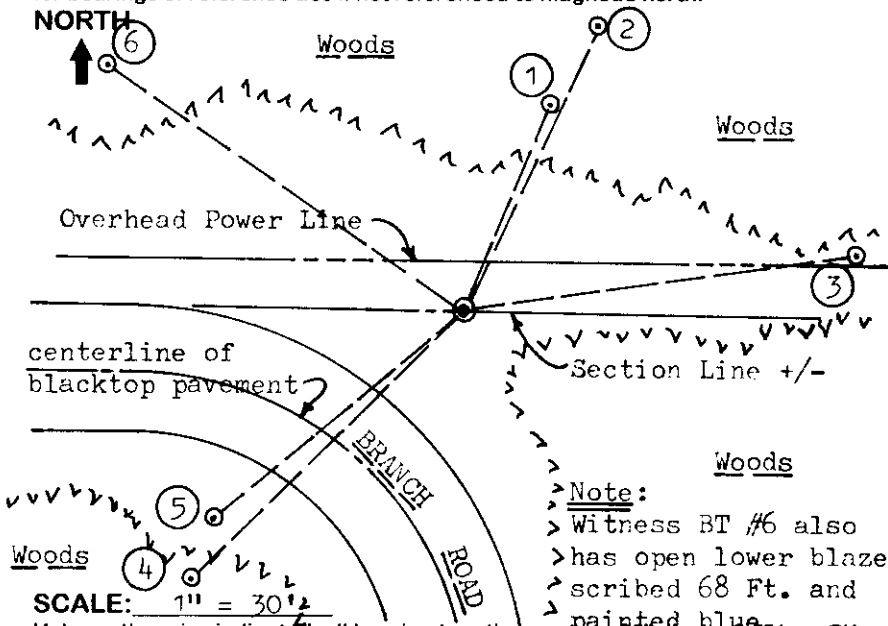
Found and accepted a standard 2" dia. by 30" long aluminum pipe monument with Oneida County cap 4" below existing grade at this corner location in a small round ground depression, and a standard white poly 'T' marker post 1' South. The cap was unstamped, so I die stamped it accordingly.

In 1862, Jenkins/GLO set a wood post as the original corner and marked BTs, a 12" Py S65°W 58 lks and an 18" Py S58°W 61 lks, all of which are now obliterated.

In 1987, a record map prepared by Stuth/Owens-Illinois of Section 11 surveys in 1959 and 1962 indicates a monument by others at the corner per map legend, and BTs: a 5" Maple N60°W 68.0', which I found and used for new ties below, and an 8" Pj N20°E 49.3' which I also found and note below.

In 1987, a record map prepared by Stuth/Owens-Illinois of Section 2 adjoining, indicates a well point at this corner and same ties to foregoing BTs on his map of Section 11; also a referral to a 1977 section survey by Schmit of Tomahawk, Wis. Both older BTs found check measured to the aluminum monument found, which obviously replaced the previous well point at the corner. This recovery completed June 3, 1998; there were no witnesses other than vehicle drive-bys.

Plan view map of monument location with bearing and distance ties to a minimum of four(4) described witness or reference monuments of concrete, natural stone, iron, live bearing trees or equivalent material. If applicable, also show a minimum of two(2) bearing and distance ties to any other monument found and not accepted; including the bearing and distance from the accepted monument. Indicate the basis for bearings of reference ties if not referenced to magnetic north.



WITNESS MONUMENT TIES:

- ① New BT 8" Aspen N22°E 34.93' with BT sign on South face.
- ② Old BT dead 8" Pj N24°E 49.4' to 60d spike in right face; upper blaze open with scribe BT and lower blaze open with scribed 49.3 Ft. and painted blue.
- ③ New BT 8 1/2" Pj N82°E 61.68'.
- ④ 1" dia. by 24" long iron pipe set with Reference Mark cap flush 1' West of 5" Aspen, S45°W 59.98'.
- ⑤ 1" dia. iron pipe found flush at S50°W 50.62'.
- ⑥ Old BT 8 1/2" Mr N56°W 68.03' with 60d spike in right face and Owens Illinois tag on SE face

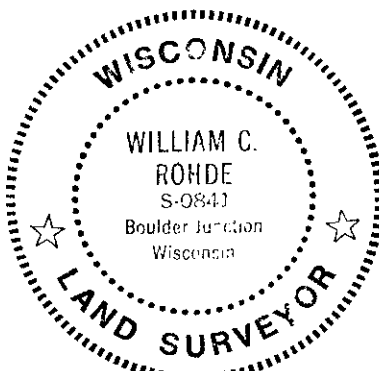
Unless otherwise indicated, all bearing tree ties are to a 2.5" dia. by 2.5" long PK nail with a 1.25" dia. steel washer driven into unblazed right face and a .25" dia. by 2.5" long PK nail with a 2" dia. steel washer stamped 'BT' is also driven into unblazed face of bearing tree at DBH; the basis for measured bearings is magnetic to nearest degree and all tie distances are horizontal measure to nearest 1/100th feet.

LAND SURVEYOR CERTIFICATION:

I, William C. Rohde, hereby certify that I am a duly licensed Professional Land Surveyor in Wisconsin, that this USPLS monument location was determined by me or under my direction and control, and that this U.S. Public Land Survey Monument Location Record is true and correct to the best of my knowledge and belief.

William C. Rohde Date: 6/10/98
Signature

	1	1	



RLS SEAL

SHEET NO. 1 OF 1

This form is intended to fulfill requirements of Chapter A-E 7.08 (3)(a)(b)(c)(d)(e)(f)(g)(h)(i) U.S. Public Land Survey Monument Location Record, Wisconsin Administrative Code. Use reverse side for geodetic location data and/or continuation purposes.

SECTION LOCATION MAP

INDEX NO. E 19
3606 02 00 20

INDEX NO. E 19