

REGISTER OF DEEDS
 ONEIDA COUNTY, WIS.
FILED
 MAR 2 2007
 At _____ O'Clock _____ M
THOMAS H. LEIGHTON
 REGISTER OF DEEDS

This form is intended to fulfill the requirements of Chapter A-E7.08 (3)(a) thru (i) U.S. Public Land Survey Monument Location Record, Wisconsin Administrative Code. Use the reverse side of form for continuation.

U.S. PUBLIC LAND SURVEY MONUMENT LOCATION RECORD

Recorders Data

USPLS CORNER: **NW** SECTION: **11** TOWNSHIP: **36 NORTH** RANGE: **6 EAST**
 NAME OF WATERWAY FOR M.C. CORNER: **N/A** SECTION LINE: **N/A**
 (CITY)(VILLAGE)(TOWN) OF: **NOKOMIS** COUNTY OF: **ONEIDA**

Description of monument found or placed and all other evidence used as the basis for monument location; including monuments and measurements required if the corner location was reestablished by lost corner proportionate methods. Also indicate name of the original surveyor, original survey date and the corner monument, bearing trees, witness or other reference monuments established, including measured bearing and distance ties, from available survey records.

In October 1862, Joseph H. Jenkins/GLO set a wood post as the original corner and noted OBTs: a 12" Pr S72°W 48 links, a 12" Pr N45°W 14 links' a 10" Pw N89°E 41 links and a 10" Pr S47°E 71 links; all are now obliterated.

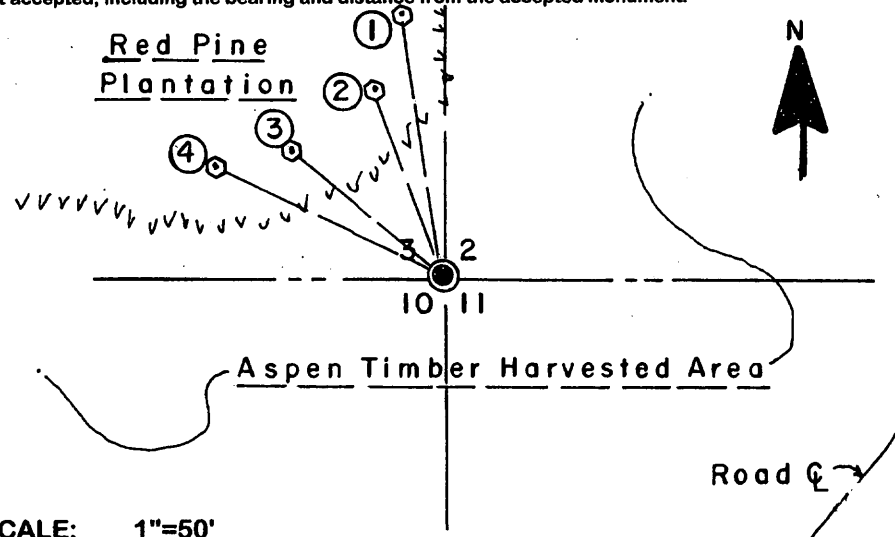
In August 1970, Forrest Wincentsen/RLS 155 notes an iron pin at this corner but no witness ties per Page 25 of his field notes in Wincentsen Book 1 filed in Oneida County survey records.

In May 2002, Aero Metric notes a 2.5" pipe found with Oneida County cap at this corner per GPS data sheet filed in Oneida County survey records.

On October 6, 2006, I found a standard aluminum monument with stamped Oneida County cap 2" above grade at this corner in an Aspen clear cut timber harvested area and SE of a Pr plantation in the NW quadrant and I also found an old 4" dia. x 45" high wood marker post with squared/scribed top 10" SE and a standard 'T' marker post 6" North. I did not identify any old BTs nearby.

Corner falls about 120' N60°W from center of an unimproved woods roadway bearing S40°W of a road curve to NW; there were no direct witnesses.

Plan view map of monument location with bearing and distance ties to a minimum of four(4) described witness or reference monuments of concrete, natural stone, iron, live bearing trees or equivalent material. If applicable, also show a minimum of two(2) bearing and distance ties to any other monument found and not accepted; including the bearing and distance from the accepted monument.



- WITNESS MONUMENT TIES:**
- ① New 17" Pr BT N09°W 69.95'.
 - ② New 15" Pr BT N20°W 50.70'.
 - ③ New 16" Pr BT N50°W 51.15' to a PK/W in left face.
 - ④ New 15" Pr BT N64°W 66.03'.
- I flagged all BTs, posts and monument blaze orange.

SCALE: 1"=50'

Unless otherwise indicated, all bearing tree ties are to a .25" dia. by 2.5" long PK nail with a 1.25" dia. steel washer driven into unblazed right face and a .25" dia. by 2.5" long PK nail with a 2" dia. steel washer stamped BT is also driven into unblazed face of bearing tree at DBH; the basis for measured bearings is by compass to nearest degree and all tie distances are measured horizontal by steel tape corrected to nearest 1/100th feet at standard temperature of 68° F.

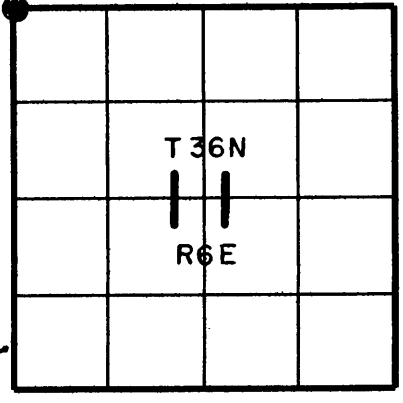
RLS SEAL:



LAND SURVEYOR CERTIFICATE:

I, William C. Rohde, hereby certify that I am duly licensed as a Professional Land Surveyor in the State of Wisconsin; that this USPLS monument location was determined by me and/or under my direct supervision and control; and that this U.S. Public Land Survey Monument Location Record is true and correct to the best of my knowledge and belief.

Signed: *William C. Rohde*
 William C. Rohde RLS 841



Date Signed: February 26, 2007

SECTION LOCATION MAP
 INDEX NO. E 17
 3606030000