

# U.S. PUBLIC LAND SURVEY MONUMENT RECORD

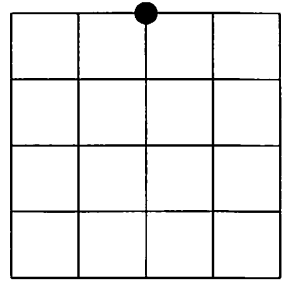
NOTE: This form is intended and designed to fulfill all requirements of Wisconsin Administrative Code, Chapter A-E 7.08 U.S. Public Land Survey Monument Record (3)(a)(b)(c)(d)(e)(f)(g)(h)(i). An additional sheet may be added if necessary to conform with said requirements.

(a) Corner location: Township 36 North

Range 6 East

Town of Nokomis

Oneida County, Wisconsin



Section 10

(b)(f)(g)(h) Description of monument found at this corner and if it was accepted, state all evidence (material, testimonial, occupational, plats, records, other monuments) used as a basis for accepting. If not accepted or if nothing was found, state evidence used as basis for establishing location. If reestablished through lost corner proportionate methods, indicate all monuments, distances and directions used to establish. Indicate type of monument found or set and sign post.

1862 - JOSEPH H. JENKINS SET POST COMMON TO SECTIONS 3 & 10, TOWN 36 NORTH, RANGE 6 EAST, AND SET FOLLOWING BEARING TREES.  
 TAMARAC 8", N25°W, 21 LINKS  
 TAMARAC 12", S 6°E 23 LINKS

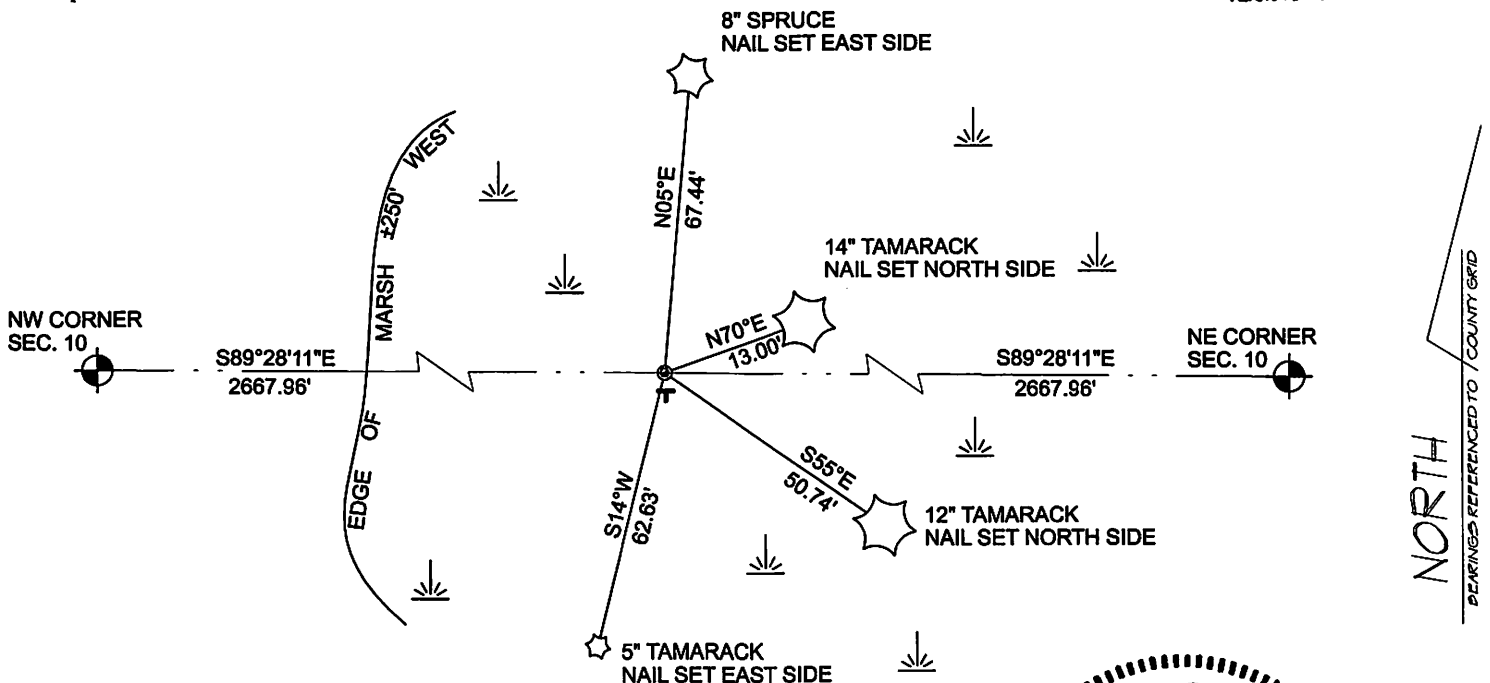
MAR 2009 - MSA RESEARCHED RECORDS, FOUND NO ADDITIONAL INFORMATION ON THIS 1/4 CORNER. AT SITE FOUND NO EVIDENCE OF THIS 1/4 CORNER. I REESTABLISHED THIS 1/4 CORNER THROUGH LOST CORNER PROPORTIONATE METHOD. SET MONUMENT ON A STRAIGHT LINE AND EQUAL DISTANCE BETWEEN NORTHWEST AND NORTHEAST CORNER OF SECTION 10.

REGISTER OF DEEDS OFFICE  
 ONEIDA COUNTY  
 FILED

APR 29 2022

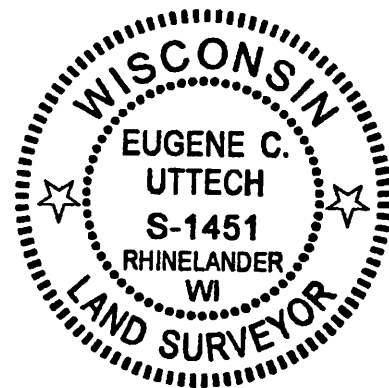
KYLE J. FRANSON  
 REGISTER OF DEEDS

(c)(d)(e) Plan view of corner with ties to at least 4 witness monuments. If in disagreement with previously established corner, show the distances between the two corners and also indicate the ties to the disputed corner.



- ⊙ 1" DIA. X 4' LONG IRON PIPE, SET
- ⊣ PLASTIC TEE POST SET 1' SOUTH

(i) I, Eugene Uttech, Registered Land Surveyor #S-1451, hereby certify that the corner location on this record was determined by me or under my direction and control and that this U.S. Public Land Survey Monument Record is correct and complete to the best of my knowledge and belief.



*Eugene C. Uttech*  
 Signature

7-29-09  
 Date

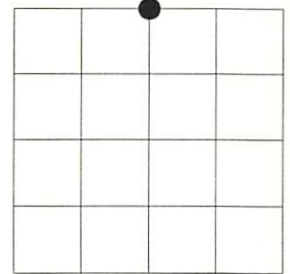
Index No. E-15

3606030020

# U.S. PUBLIC LAND SURVEY MONUMENT RECORD

NOTE: This form is intended and designed to fulfill all requirements of Wisconsin Administrative Code, Chapter A-E 7.08 U.S. Public Land Survey Monument Record (3)(a)(b)(c)(d)(e)(f)(g)(h)(i). An additional sheet may be added if necessary to conform with said requirements.

(a) Corner location: Township 36 North  
 Range 6 East  
 Town of Nokomis  
 Oneida County, Wisconsin



Section 10

(b)(f)(g)(h) Description of monument found at this corner and if it was accepted, state all evidence (material, testimonial, occupational, plats, records, other monuments) used as a basis for accepting. If not accepted or if nothing was found, state evidence used as basis for establishing location. If reestablished through lost corner proportionate methods, indicate all monuments, distances and directions used to establish. Indicate type of monument found or set and sign post.

October 1862 - Joseph H. Jenkins Set Quarter Section post.  
 "Tamarac 8 N 25° W 21 lks."  
 "Tamarac 12 S 6° E 23 lks."

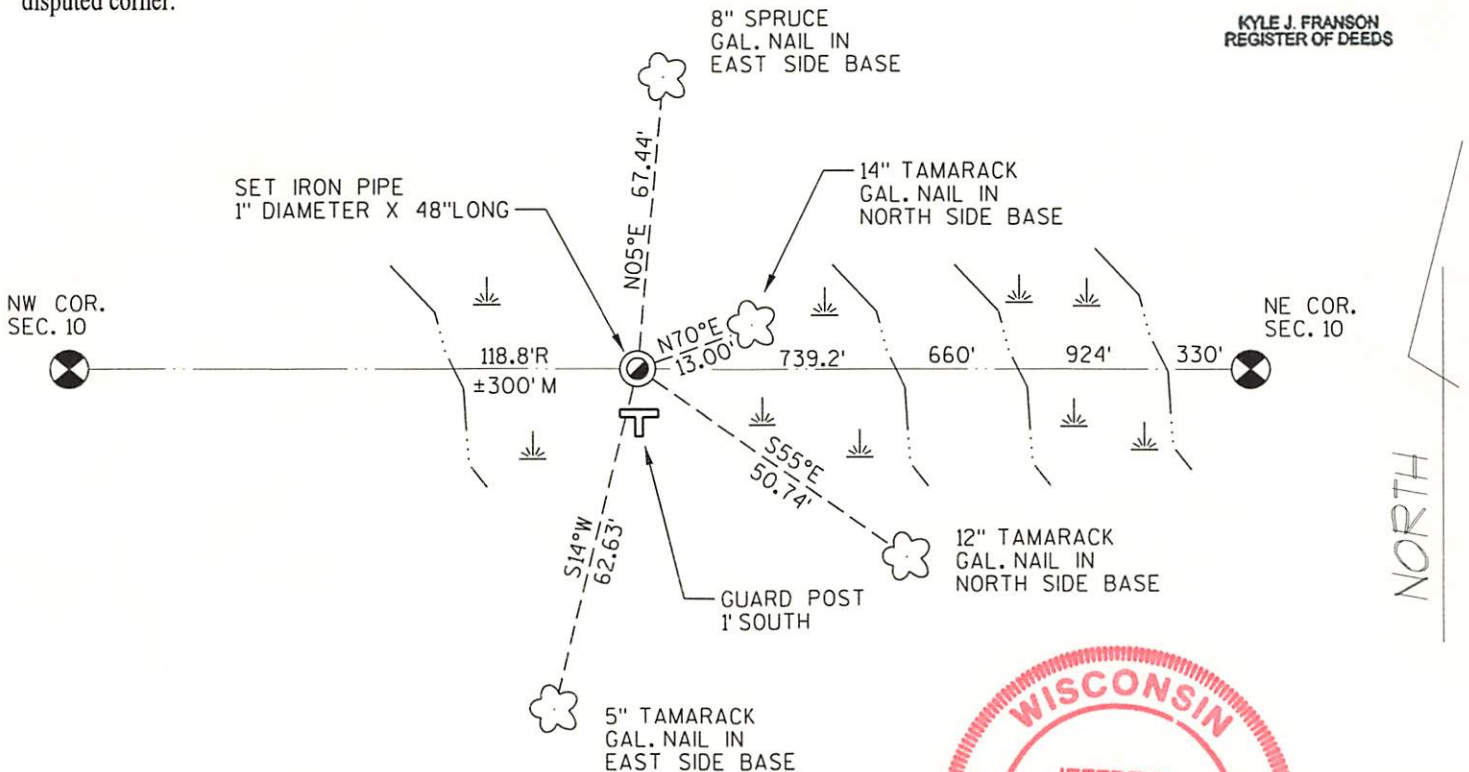
March 2009 - I find no evidence of Jenkins Post or BT's.  
 I Set a 1" Diameter X 48" Long Iron Pipe equidistant from and on line between the NE and NW Section Corners.  
 This position fit the original calls made by Jenkins as he ran the section line West from the NE Section Corner to the Quarter Corner as shown below.  
 This position did not fit the original call made by Jenkins as he ran the section line West from the Quarter Corner as shown below.

REGISTER OF DEEDS OFFICE  
 ONEIDA COUNTY  
 FILED

APR 29 2022

KYLE J. FRANSON  
 REGISTER OF DEEDS

(c)(d)(e) Plan view of corner with ties to at least 4 witness monuments. If in disagreement with previously established corner, show the distances between the two corners and also indicate the ties to the disputed corner.



(i) I, Jeffrey L. DeMuth, Registered Land Surveyor #S-2656, hereby certify that the corner location on this record was determined by me or under my direction and control and that this U.S. Public Land Survey Monument Record is correct and complete to the best of my knowledge and belief.



Signature *Jeffrey L. DeMuth*

Date 03/11/2009

3606030020

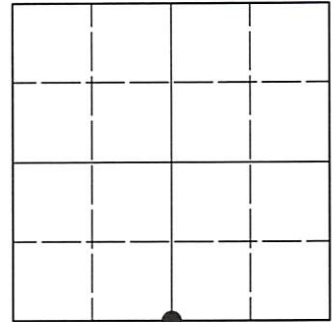
Index No. E-15

# U.S. PUBLIC LAND SURVEY MONUMENT RECORD

Note: This form is intended and designed to fulfill all requirements of Wisconsin Administrative Code, Chapter A-E 7.08 U.S. Public Land Survey Monument Record (3)(a-i).

(a) CORNER LOCATION  
 1/4 Cor. of Secs. 3 & 10  
 Township 36 North  
 Range 6 East of the 4th P.M.  
 Town of Nokomis  
 County of Oneida

WISCORS - Oneida County  
 N: 161,444.25 USft  
 E: 183,769.44 USft  
 Datum: NAD 83(2011) ep. 2010.00  
 GNSS Method: RTN - Direct  
 GNSS Control: WISCORS VRS



Sec. 3, T. 36 N., R. 6 E.

(b)(f)(g)(h) Description of monument found at this corner and if it was accepted, state all evidence (material, testimonial, occupational, plats, records, other monuments) used as a basis for accepting. If not accepted or if nothing was found, state evidence used as basis for establishing location. If re-established through lost corner proportionate methods, indicate all monuments, distances and directions used to establish. Indicate type of monument and sign post found or set.

*This record is a perpetuation of the following land corner document(s):*

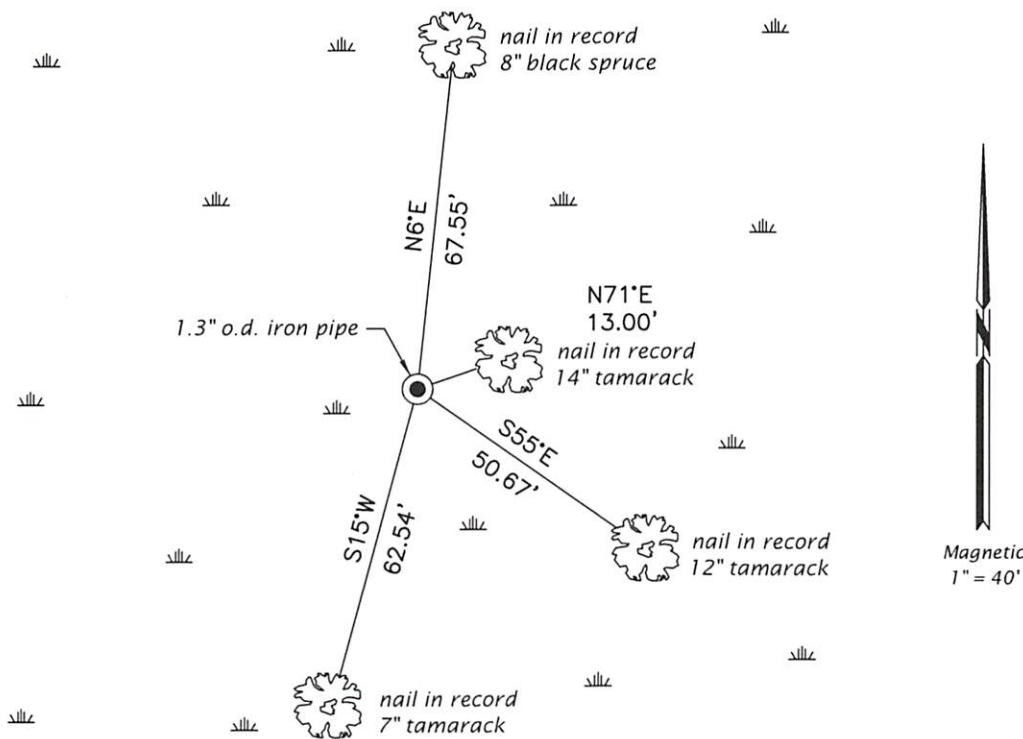
*July 29, 2009: USPLS Monument Record by Eugene C. Uttech, filed in Oneida County*

*A complete history of the corner can be found on the previous land corner document(s). I accept the record activity as a true and faithful perpetuation or reestablishment of the original corner location and further perpetuate it as described below.*

*May 23, 2022: I found and accepted the record monument, a 1.3" o.d. iron pipe, firmly set, projecting 10" above the bog surface. I found or established accessories as indicated below. I found a white vinyl sign post bearing South, 1.0 ft.*

*The coordinate value shown is the weighted mean of two or more GNSS observations at markedly different times satisfying the accuracy requirements defined and qualified in the 2022 Oneida County Fee Schedule for USPLS Corners.*

(c)(d)(e) Plan view of corner with ties to at least 4 witness monuments. If in disagreement with previously established corner, show the distances between the two corners and also indicate the ties to the disputed.



Magnetic  
1" = 40'

REGISTER OF DEEDS OFFICE  
 ONEIDA COUNTY  
 FILED

AUG 02 2022

KYLE J. FRANSON  
 REGISTER OF DEEDS

(i) I, Jeffrey W. Austin, Professional Land Surveyor No. S-1885, hereby certify that the corner location on this record was determined by me or under my direction and control and that this U.S. Public Land Survey Monument Record is correct and complete to the best of my knowledge and belief.

JUNE 1, 2022  
 Signature Date