

At _____ O'Clock _____ M
THOMAS H. LEIGHTON

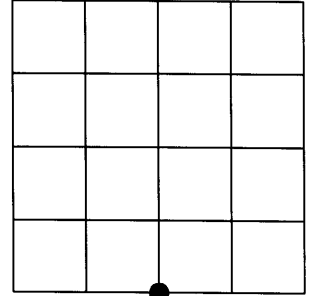
U.S. PUBLIC LAND SURVEY MONUMENT RECORD

Note: This form is intended and designed to fulfill all requirements of the Wisconsin Administrative Code, Chapter A-E 7.08 U.S. Public Land Monument Record (3)(a)(b)(c)(d)(e)(f)(g)(h)(i). An additional sheet may be added if necessary to conform with said requirements.

(a) CORNER LOCATION:

South Quarter Corner of Section 4
Township 36 North
Range 6 East
Town of Nokomis
County of Oneida
Wisconsin

Oneida County Coordinates
North: 161389.9412
East: 178465.4741
Control Station: Oneida County #275
Latitude: 45° 38' 41.06726" N
Longitude: 89° 44' 58.35638" W
Datum: NAD-83 (1991)
Method: Real Time Kinematic -
Post-Processed - Averaged



SECTION 4

(b) HISTORY OF ORIGINAL CORNER ESTABLISHMENT

Original Surveyor: Joseph H. Jenkins - Set 1/4 section post
Date of Survey: Commenced - October 13, 1862
Completed - October 28, 1862

Original B.T.'S - 14" Yellow Pine, S 25°E, 74 links
14" Yellow Pine, N 4°W, 29 links

(f)(g)(h) DESCRIPTION OF MONUMENT FOUND AT THIS CORNER AND IF IT WAS ACCEPTED, STATE ALL EVIDENCE (MATERIAL, TESTIMONIAL, OCCUPATIONAL, PLATS, RECORDS, OTHER MONUMENTS) USED AS A BASIS FOR ESTABLISHING LOCATION. IF NOT ACCEPTED OF IF NOTHING WAS FOUND, STATE EVIDENCE USED AS BASIS FOR ESTABLISHING LOCATION. IF REESTABLISHED THROUGH LOST CORNER PROPORTIONATE METHODS, INDICATE ALL MONUMENTS, DISTANCES AND DIRECTIONS USED TO ESTABLISH. INDICATE TYPE OF MONUMENT AND SIGN POST FOUND OR SET.

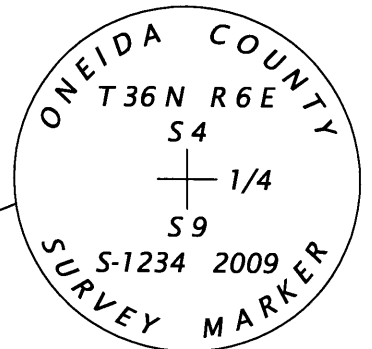
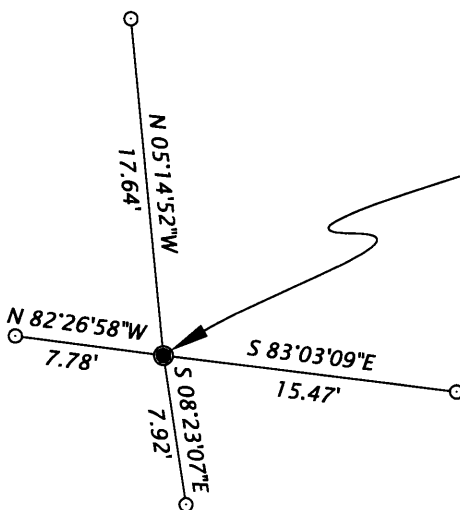
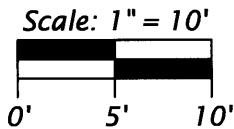
December 15, 1985 - William H. Stuth indicates an iron pipe or cap at this corner with a 10" J.P. S 6°W, 8.0' and 8" J.P. N 22°W, 23.0' per his Owens-Illinois Ownership Boundary Survey map prepared March 9, 1987 and filed in the Oneida County Surveyors Office.

August 25, 2009 - I, James D. Rein, Professional Land Surveyor No. S-1234, found a 1.25" o.d. iron pipe and accepted its location. I set a 2.5" o.d. x 30" long Oneida County capped aluminum monument in its place and set four (4) 1.0" o.d. x 24" long iron pipes as reference monuments as shown in the sketch below. A white plastic marker post found in place bears Southeast, 0.5'.

(c)(d)(e) PLAN VIEW OF CORNER WITH TIES TO AT LEAST 4 WITNESS MONUMENTS. IF IN DISAGREEMENT WITH PREVIOUSLY ESTABLISHED CORNER, SHOW THE DISTANCE BETWEEN THE TWO CORNERS AND ALSO INDICATE THE TIES TO THE DISPUTED CORNER.

○ = Set iron pipe; 1.0" o.d. x 24" long.

Bearings Oneida County Grid,
based on GPS survey data.



Set 2.5" o.d. Oneida County capped aluminum monument in place of a found 1.25" o.d. iron pipe.



(i) I, JAMES D. REIN, PROFESSIONAL LAND SURVEYOR NO. S-1234 HEREBY CERTIFY THAT THE CORNER LOCATION ON THIS RECORD WAS DETERMINED BY ME OR UNDER MY DIRECTION AND CONTROL AND THAT THIS U.S. PUBLIC LAND SURVEY MONUMENT RECORD IS CORRECT AND COMPLETE TO THE BEST OF MY KNOWLEDGE AND BELIEF

[Handwritten Signature]
SIGNATURE

12/15/09
DATE

3606040020

INDEX NO. E 11